

# FreeBSD動作検証レポート

## T110g-E / 10.1-RELEASE

### 対象ハードウェア

maker:NEC, product:Express5800/R110g-1E  
[N8100-2174Y], serial:4800112, version:FR1.0

### 対象OSバージョン

FreeBSD 10.1-RELEASE #0 r274401: Tue Nov 11  
21:02:49 UTC 2014

2015年3月4日版

BSDコンサルティング株式会社

*本文書の無断での引用・転載を禁止する*

*Contact us: [info@bsdconsulting.co.jp](mailto:info@bsdconsulting.co.jp)*

*Copyright (c) 2015 BSD Consulting, Inc. All Rights Reserved.*

# 動作検証レポート

# 要約

## ハードウェア基本情報

製品UUID	00ebd656-8e31-e411-8001-94de80ff25c3
製品データ	maker:NEC, product:Express5800/R110g-1E [N8100-2174Y], serial:4800112, version:FR1.0
筐体データ	maker:NEC, serial:01, tag:_____, version:856-180006-502
CPU	Intel(R) Pentium(R) CPU G3240 @ 3.10GHz
MEMORY	8388608[KB]
BIOS	reldate:05/22/2014, vendor:American Megatrends Inc., version:4.6.0203
ACPI	oem:AMI , revision:2, rsdp:0x000f0490, rsdt:0xcc7fa028, xsdt:0x00000000cc7fa090
OS	FreeBSD 10.1-RELEASE #0 r274401: Tue Nov 11 21:02:49 UTC 2014

## 基礎性能データ

メモリアクセス速度	27.245 GBi/sec
IPv4スタック処理速度	280.135 MBi/sec
IPv6スタック処理速度	278.891 MBi/sec

## 動作検証要約

FreeBSD 10.1-RELEASE #0 r274401: Tue Nov 11 21:02:49 UTC 2014は、検証対象ハードウェア「maker:NEC, product:Express5800/R110g-1E [N8100-2174Y], serial:4800112, version:FR1.0」において正常に動作する。

インストールしたFreeBSD 10.1-RELEASE #0 r274401: Tue Nov 11 21:02:49 UTC 2014をFreeBSD 11.0-RELEASEやそれ以降のバージョンにアップグレードする場合には注意が必要。FreeBSD 11.0-RELEASEにはLSI MegaRAID SASドライバとしてmfi(4)ではなくmrsas(4)がデフォルトでアタッチされるように挙動が変更される可能性がある。

LSI MegaRAID SASドライバとしてmrsas(4)が使われた場合、/dev/以下に表示されるファイル名は次のように変更される見通し。

```
mfi0    → mrsas0
mfi0    → da0
mfi0s1  → da0s1a
mfi0s2  → da0s1b
```

論理パーティションの表示や名称は今後変更される可能性もあり、上記とは違う名前になる可能性もある。アップグレード対象のバージョンのリリースノートを参

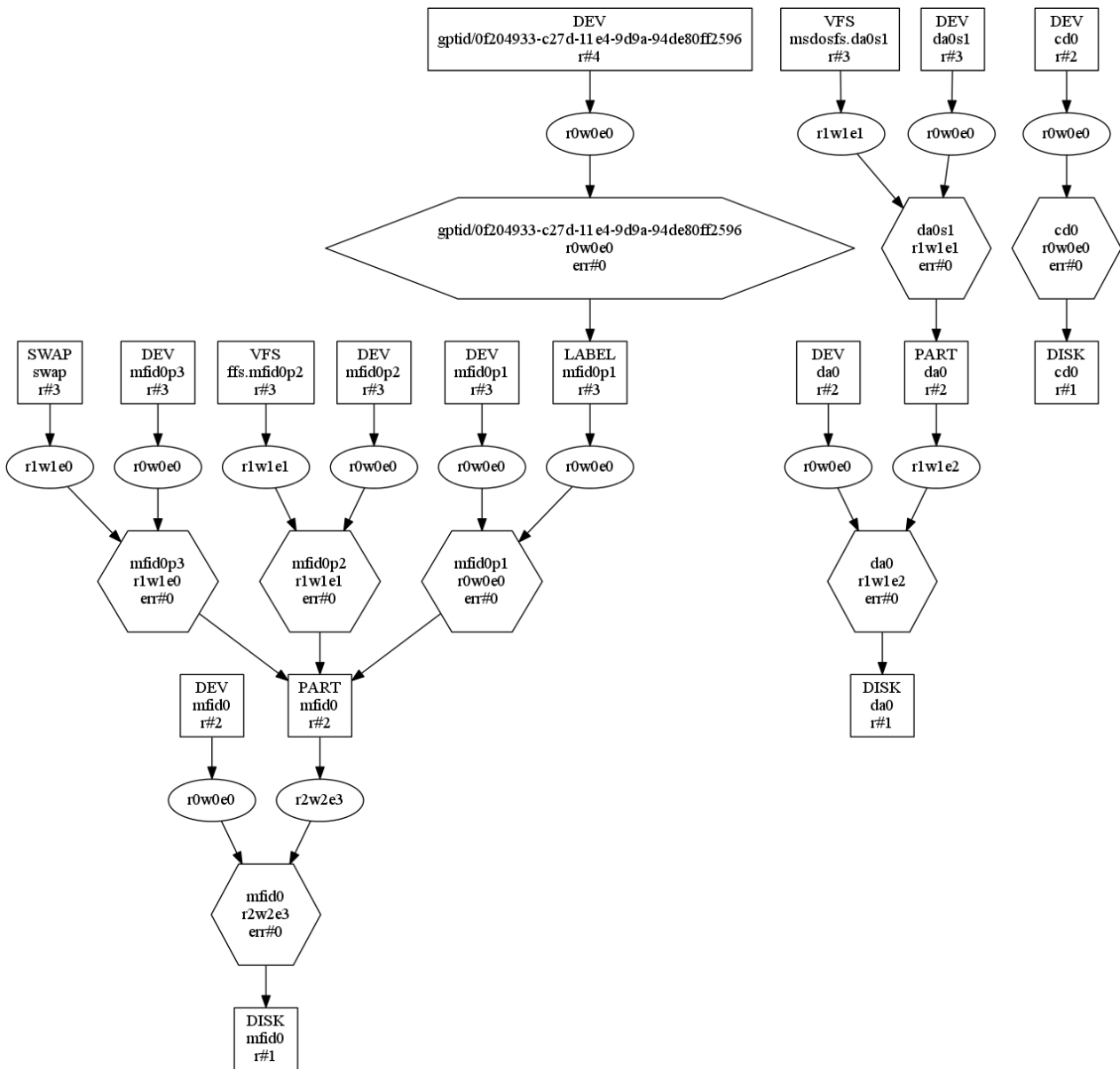
考にするとともに、適切な名称で/etc/fstabを書き換えるなどしてアップグレードを実施する必要がある。

FreeBSDプロジェクトは、FreeBSD 11.0-RELEASE以降はブランチでの最低5年間サポートの開始を予定している。FreeBSD 11.0-RELEASE以降は、ブランチにおける最新のリリースバージョンのみがサポートの対象となる。このため、FreeBSD 11.0-RELEASE以降はマイナーアップグレードごとにアップグレードを実施し、FreeBSD 11.1-RELEASE、FreeBSD 11.2-RELEASEへとバージョンアップを実施する必要がある。カーネルをカスタマイズしない限り、freebsd-update(8)コマンドを使ってバイナリアップデートを実施できる。

## 互換情報

本動作検証レポートはR110g-1Eに対して実施した結果に基づいている。T110g-EおよびT110g-SはR110g-1Eと同じマザーボードを採用しており、本動作検証レポートの内容はT110g-EおよびT110g-Sにおいても有効。

# 検証機GEOMツリー



# 高負荷耐久試験

# 高負荷耐久試験

## 試験結果

検証対象ハードウェア(maker:NEC, product:Express5800/R110g-1E [N8100-2174Y], serial:4800112, version:FR1.0)は24時間高負荷耐久試験をクリアしており、所定の負荷に対して安定して動作するものとみられる。

不正処理高負荷耐久試験	クリア
通常ファイル作成高負荷耐久試験	クリア
FIFOファイル作成高負荷耐久試験	クリア
ディレクトリ作成高負荷耐久試験	クリア
ハードリンクファイル作成高負荷耐久試験	クリア
シンボリックリンクファイル作成高負荷耐久試験	クリア
ファイルロック機構高負荷耐久試験	クリア
メモリファイルマッピング機能高負荷耐久試験	クリア
ファイルシステム階層構造トラバース高負荷耐久試験	クリア
ファイルシステムパス解析高負荷耐久試験	クリア
ファイルシステムパスリネーム高負荷耐久試験	クリア
ファイルシステムライト・キャッシュリード高負荷耐久試験	クリア
ファイルシステムスワップ高負荷耐久試験	クリア
スレッド機構高負荷耐久試験	クリア
間接システムコール高負荷耐久試験	クリア
擬似ターミナル機構高負荷耐久試験	クリア
共有メモリ機構高負荷耐久試験	クリア
ネットワークソケット高負荷耐久試験	クリア
TCPスタック高負荷耐久試験	クリア
UDPスタック高負荷耐久試験	クリア

# 動作検証レポート



# 動作検証レポート

## ACPI認識データ

ACPI_APIC	Revision=3, OEMID=AMI, OEM_Table ID=06A0, OEM_Revision=0x1072009, Creator_ID=AMI, Creator_Revision=0x10013
ACPI_BERT	Revision=1, OEMID=AMI, OEM_Table ID=AMI BERT, OEM_Revision=0x0, Creator_ID=AMI, Creator_Revision=0x10013
ACPI_DSDT	Revision=2, OEMID=AMI, OEM_Table ID=06A0, OEM_Revision=0x0, Creator_ID=INTL, Creator_Revision=0x20091112
ACPI_FACP	Revision=5, OEMID=AMI, OEM_Table ID=06A0, OEM_Revision=0x1072009, Creator_ID=AMI, Creator_Revision=0x10013, FACS=0xccfae080, DSDT=0xcc7fa1b8, SMI_CMD=0xb2, ACPI_ENABLE=0xa0, ACPI_DISABLE=0xa1, S4BIOS_REQ=0x0, FLUSH_STRIDE=16, DUTY_WIDTH=0, RESET_VALUE=0xf7
ACPI_FACS	HwSig=0x00000012, Firm_Wake_Vec=0x00000000
ACPI_FPDT	Revision=1, OEMID=AMI, OEM_Table ID=06A0, OEM_Revision=0x1072009, Creator_ID=AMI, Creator_Revision=0x10013
ACPI_HPET	Revision=1, OEMID=AMI, OEM_Table ID=06A0, OEM_Revision=0x1072009, Creator_ID=AMI, Creator_Revision=0x5
ACPI_MCFG	Revision=1, OEMID=AMI, OEM_Table ID=06A0, OEM_Revision=0x1072009, Creator_ID=MSFT, Creator_Revision=0x97
ACPI_PRAD	Revision=2, OEMID=PRADID, OEM_Table ID=PRADTID, OEM_Revision=0x1, Creator_ID=MSFT, Creator_Revision=0x3000001
ACPI_RSD_PTR	OEM=AMI, ACPI_Rev=2.0x_(2), XSDT=0xcc7fa090
ACPI_SPCR	Revision=1, OEMID=A_M I, OEM_Table ID=APTIO4, OEM_Revision=0x1072009, Creator_ID=AMI, Creator_Revision=0x5
ACPI_XSDT	Revision=1, OEMID=AMI, OEM_Table ID=06A0, OEM_Revision=0x1072009, Creator_ID=AMI, Creator_Revision=0x10013
ACPI_SSDT_1	Length=1411, Revision=1, Checksum=30, OEMID=PmRef, OEM_Table ID=Cpu0Ist, OEM_Revision=0x3000, Creator_ID=INTL, Creator_Revision=0x20051117
ACPI_SSDT_2	Length=2937, Revision=1, Checksum=151, OEMID=CpuRef, OEM_Table ID=CpuSsd, OEM_Revision=0x3000, Creator_ID=INTL, Creator_Revision=0x20051117
ACPI_SSDT_3	Length=734, Revision=1, Checksum=191, OEMID=PmRef, OEM_Table ID=Cpu0Tst, OEM_Revision=0x3000, Creator_ID=INTL, Creator_Revision=0x20051117
ACPI_SSDT_4	Length=840, Revision=1, Checksum=74, OEMID=PmRef, OEM_Table ID=ApTst, OEM_Revision=0x3000, Creator_ID=INTL, Creator_Revision=0x20051117
ACPI_SSDT_5	Length=1173, Revision=1, Checksum=1, OEMID=IdeRef, OEM_Table ID=IdeTable, OEM_Revision=0x1000, Creator_ID=INTL, Creator_Revision=0x20120711
ACPI_SSDT_6	Length=23390, Revision=1, Checksum=165, OEMID=SaSsd, OEM_Table ID=SaSsd, OEM_Revision=0x3000, Creator_ID=INTL, Creator_Revision=0x20120711
ACPI_SSDT_7	Length=505, Revision=1, Checksum=51, OEMID=SgRef, OEM_Table ID=SgPeg, OEM_Revision=0x1000, Creator_ID=INTL, Creator_Revision=0x20120711

## MFIデバイス認識データ

アダプタ	mfi0 Adapter:, Product Name: LSI MegaRAID SAS 9272-8i, Serial Number: SV42641826, Firmware: 23.11.0-0038, RAID Levels: JBOD, RAID0, RAID1, RAID5, RAID6, RAID10, RAID50, Battery Backup: present, NVRAM: 32K, Onboard Memory: 512M, Minimum Stripe: 8K, Maximum Stripe: 1M
ドライバ	mfi0 Physical Drives:, 8 ( 136G) ONLINE lt;HGST HUC156030CSS200 A30B serial=0TV3M0XLgt; SCSI-6 E1:S0
ボリューム	mfi0 Volumes:, Id Size Level Stripe State Cache Name, mfid0 ( 136G) RAID-0 256K OPTIMAL Disabled lt;array0gt;
コンフィグ	mfi0 Configuration: 1 arrays, 1 volumes, 0 spares, array 0 of 1 drives:, drive 8 ( 136G) ONLINE lt;HGST HUC156030CSS200 A30B serial=0TV3M0XLgt; SCSI-6, volume mfid0 (136G) RAID-0 256K OPTIMAL lt;array0gt; spans:, array 0

※ 対象となるデバイスがmfi(4)ドライバを使用しないストレージ構成の場合、当項目は該当データなし。

## MPTデバイス認識データ

アダプタ	該当データなし
ドライバ	該当データなし
ボリューム	該当データなし
コンフィグ	該当データなし

※ 対象となるデバイスがmpt(4)ドライバを使用しないストレージ構成の場合、当項目は該当データなし。

## NIC認識データ

NIC	bge0, bge1
bge0	flags=8843<UP,BROADCAST,RUNNING,SIMPLEX,MULTICAST>, metric=0, mtu=1500, options=c019b<RXCSUM, TXCSUM, VLAN_MTU, VLAN_HWTAGGING, VLAN_HWCSUM, TSO4, VLAN_HWTSO, LINKSTATE>, ether=94:de:80:ff:25:96, inet=192.168.1.39 netmask 0xfffff00 broadcast 192.168.1.255, nd6_options=29<PERFORMNUD, IFDISABLED, AUTO_LINKLOCAL>, media=Ethernet autoselect (1000baseT <full-duplex, master>), status=active
bge1	flags=8802<BROADCAST, SIMPLEX, MULTICAST>, metric=0, mtu=1500, options=c019b<RXCSUM, TXCSUM, VLAN_MTU, VLAN_HWTAGGING, VLAN_HWCSUM, TSO4, VLAN_HWTSO, LINKSTATE>, ether=94:de:80:ff:25:97, nd6_options=29<PERFORMNUD, IFDISABLED, AUTO_LINKLOCAL>, media=Ethernet autoselect

## カーネルデバイス認識データ

acpi	apm	apmctl	audit
bpf	bpf0(bpf)	cd0	console
consolectl	ctty	cuau0	cuau0.init
cuau0.lock	cuau1	cuau1.init	cuau1.lock
da0	devctl	devstat	dumpdev(mfid0p3)
fd	fd/0	fd/1	fd/2
fido	geom.ctl	gptid	gptid/0f204933-c27d-11e4-9d9a-94de80ff2596
io	kbd0(ukbd0)	kbd1(kbdmux0)	kbd2(ukbd1)
kbdmux0	klog	kmem	log(/var/run/log)
mdctl	megaraid_sas_ioctl_node(mfi0)	mem	mfi0
mfid0	mfid0p1	mfid0p2	mfid0p3
midistat	nfslock	null	pass0
pass1	pci	random	sndstat
stderr(fd/2)	stdin(fd/0)	stdout(fd/1)	sysmouse
ttyu0	ttyu0.init	ttyu0.lock	ttyu1
ttyu1.init	ttyu1.lock	ttyv0	ttyv1
ttyv2	ttyv3	ttyv4	ttyv5
ttyv6	ttyv7	ttyv8	ttyv9
ttyva	ttyvb	ttyvc	ttyvd
ttyve	ttyvf	ufssuspend	ugen0.1(usb/0.1.0)
ugen0.2(usb/0.2.0)	ugen0.3(usb/0.3.0)	ugen0.4(usb/0.4.0)	ugen0.5(usb/0.5.0)
ugen1.1(usb/1.1.0)	ugen1.2(usb/1.2.0)	ugen2.1(usb/2.1.0)	ugen2.2(usb/2.2.0)
ukbd0	ukbd1	ums0	urandom(random)
usb	usb/0.1.0	usb/0.1.1	usb/0.2.0
usb/0.2.1	usb/0.3.0	usb/0.3.1	usb/0.4.0
usb/0.4.1	usb/0.4.2	usb/0.5.0	usb/0.5.1
usb/0.5.2	usb/1.1.0	usb/1.1.1	usb/1.2.0
usb/1.2.1	usb/2.1.0	usb/2.1.1	usb/2.2.0
usb/2.2.1	usbctl	xpt0	zero

## PCI認識データ

1	pci0:0:0:0(hostb0), class=HOST-PCI, vendor='Intel Corporation', device='Haswell DRAM Controller'
2	pci0:0:20:0(xhci0), class=USB, vendor='Intel Corporation', device='Lynx Point USB xHCI Host Controller'
3	pci0:0:22:0(none0), class=simple comms, vendor='Intel Corporation', device='Lynx Point MEI Controller'
4	pci0:0:22:1(none1), class=simple comms, vendor='Intel Corporation', device='Lynx Point MEI Controller'
5	pci0:0:26:0(ehci0), class=USB, vendor='Intel Corporation', device='Lynx Point USB Enhanced Host Controller'
6	pci0:0:28:0(pci0), class=PCI-PCI, vendor='Intel Corporation', device='Lynx Point PCI Express Root Port'
7	pci0:0:28:4(pci0), class=PCI-PCI, vendor='Intel Corporation', device='Lynx Point PCI Express Root Port'
8	pci0:0:28:5(pci0), class=PCI-PCI, vendor='Intel Corporation', device='Lynx Point PCI Express Root Port'
9	pci0:0:29:0(ehci1), class=USB, vendor='Intel Corporation', device='Lynx Point USB Enhanced Host Controller'
10	pci0:0:31:0(isab0), class=PCI-ISA, vendor='Intel Corporation', device='Lynx Point LPC Controller'
11	pci0:0:31:2(ata0), class=ATA, vendor='Intel Corporation', device='Lynx Point 4-port SATA Controller 1 [IDE mode]'
12	pci0:0:31:3(none2), class=SMBus, vendor='Intel Corporation', device='Lynx Point SMBus Controller'
13	pci0:0:31:5(ata1), class=ATA, vendor='Intel Corporation', device='Lynx Point 2-port SATA Controller 2 [IDE mode]'
14	pci0:33:0:0(mfi0), class=RAID, vendor='LSI Logic / Symbios Logic', device='MegaRAID SAS 2208 [Thunderbolt]'
15	pci0:57:0:0(vgapci0), class=VGA, vendor='Matrox Electronics Systems Ltd.', device='MGA G200e [Pilot ServerEngines (SEP1)]'
16	pci0:58:0:0(bge0), class=ethernet, vendor='Broadcom Corporation', device='NetXtreme BCM5718 Gigabit Ethernet PCIe'
17	pci0:58:0:1(bge1), class=ethernet, vendor='Broadcom Corporation', device='NetXtreme BCM5718 Gigabit Ethernet PCIe'

## メモリ認識データ

1	0x0/0x10000 BIOS write-back fixed-base fixed-length set-by-firmware active
2	0x10000/0x10000 BIOS write-back fixed-base fixed-length set-by-firmware active
3	0x20000/0x10000 BIOS write-back fixed-base fixed-length set-by-firmware active
4	0x30000/0x10000 BIOS write-back fixed-base fixed-length set-by-firmware active
5	0x40000/0x10000 BIOS write-back fixed-base fixed-length set-by-firmware active
6	0x50000/0x10000 BIOS write-back fixed-base fixed-length set-by-firmware active
7	0x60000/0x10000 BIOS write-back fixed-base fixed-length set-by-firmware active
8	0x70000/0x10000 BIOS write-back fixed-base fixed-length set-by-firmware active
9	0x80000/0x4000 BIOS write-back fixed-base fixed-length set-by-firmware active
10	0x84000/0x4000 BIOS write-back fixed-base fixed-length set-by-firmware active
11	0x88000/0x4000 BIOS write-back fixed-base fixed-length set-by-firmware active
12	0x8c000/0x4000 BIOS write-back fixed-base fixed-length set-by-firmware active
13	0x90000/0x4000 BIOS write-back fixed-base fixed-length set-by-firmware active
14	0x94000/0x4000 BIOS write-back fixed-base fixed-length set-by-firmware active
15	0x98000/0x4000 BIOS write-back fixed-base fixed-length set-by-firmware active
16	0x9c000/0x4000 BIOS write-back fixed-base fixed-length set-by-firmware active
17	0xa0000/0x4000 BIOS uncacheable fixed-base fixed-length set-by-firmware active
18	0xa4000/0x4000 BIOS uncacheable fixed-base fixed-length set-by-firmware active
19	0xa8000/0x4000 BIOS uncacheable fixed-base fixed-length set-by-firmware active
20	0xac000/0x4000 BIOS uncacheable fixed-base fixed-length set-by-firmware active
21	0xb0000/0x4000 BIOS uncacheable fixed-base fixed-length set-by-firmware active
22	0xb4000/0x4000 BIOS uncacheable fixed-base fixed-length set-by-firmware active
23	0xb8000/0x4000 BIOS uncacheable fixed-base fixed-length set-by-firmware active
24	0xbc000/0x4000 BIOS uncacheable fixed-base fixed-length set-by-firmware active
25	0xc0000/0x1000 BIOS write-protect fixed-base fixed-length set-by-firmware active
26	0xc1000/0x1000 BIOS write-protect fixed-base fixed-length set-by-firmware active
27	0xc2000/0x1000 BIOS write-protect fixed-base fixed-length set-by-firmware active
28	0xc3000/0x1000 BIOS write-protect fixed-base fixed-length set-by-firmware active
29	0xc4000/0x1000 BIOS write-protect fixed-base fixed-length set-by-firmware active
30	0xc5000/0x1000 BIOS write-protect fixed-base fixed-length set-by-firmware active
31	0xc6000/0x1000 BIOS write-protect fixed-base fixed-length set-by-firmware active
32	0xc7000/0x1000 BIOS write-protect fixed-base fixed-length set-by-firmware active
33	0xc8000/0x1000 BIOS write-protect fixed-base fixed-length set-by-firmware active
34	0xc9000/0x1000 BIOS write-protect fixed-base fixed-length set-by-firmware active
35	0xca000/0x1000 BIOS write-protect fixed-base fixed-length set-by-firmware active
36	0xcb000/0x1000 BIOS write-protect fixed-base fixed-length set-by-firmware active
37	0xcc000/0x1000 BIOS write-protect fixed-base fixed-length set-by-firmware active
38	0xcd000/0x1000 BIOS write-protect fixed-base fixed-length set-by-firmware active
39	0xce000/0x1000 BIOS write-protect fixed-base fixed-length set-by-firmware active



81	0xf8000/0x1000 BIOS write-protect fixed-base fixed-length set-by-firmware active
82	0xf9000/0x1000 BIOS write-protect fixed-base fixed-length set-by-firmware active
83	0xfa000/0x1000 BIOS write-protect fixed-base fixed-length set-by-firmware active
84	0xfb000/0x1000 BIOS write-protect fixed-base fixed-length set-by-firmware active
85	0xfc000/0x1000 BIOS write-protect fixed-base fixed-length set-by-firmware active
86	0xfd000/0x1000 BIOS write-protect fixed-base fixed-length set-by-firmware active
87	0xfe000/0x1000 BIOS write-protect fixed-base fixed-length set-by-firmware active
88	0xff000/0x1000 BIOS write-protect fixed-base fixed-length set-by-firmware active
89	0x0/0x200000000 BIOS write-back set-by-firmware active
90	0x200000000/0x200000000 BIOS write-back set-by-firmware active
91	0x220000000/0x100000000 BIOS write-back set-by-firmware active
92	0xe0000000/0x200000000 BIOS uncacheable set-by-firmware active
93	0xd0000000/0x100000000 BIOS uncacheable set-by-firmware active

# 動作検証レポート 詳細データ



# 詳細データ

## カーネル環境変数データ詳細一覧

```
LINES="24"
bootfile="kernel"
comconsole_pciddev=""
comconsole_port="1016"
comconsole_speed="9600"
console="vidconsole"
currdev="disk0p2:"
hint.acpi.0.oem="AMI"
hint.acpi.0.revision="2"
hint.acpi.0.rsdp="0x000f0490"
hint.acpi.0.rsdtd="0xcc7fa028"
hint.acpi.0.xsdt="0x00000000cc7fa090"
hint.acpi.0.xsdt_length="36"
hint.atkbd.0.at="atkbd"
hint.atkbd.0.irq="1"
hint.atkbd.0.at="isa"
hint.atkbd.0.port="0x060"
hint.atrtc.0.at="isa"
hint.atrtc.0.irq="8"
hint.atrtc.0.port="0x70"
hint.attimer.0.at="isa"
hint.attimer.0.irq="0"
hint.attimer.0.port="0x40"
hint.fd.0.at="fdc0"
hint.fd.0.drive="0"
hint.fd.1.at="fdc0"
hint.fd.1.drive="1"
hint.fdc.0.at="isa"
hint.fdc.0.drq="2"
hint.fdc.0.irq="6"
hint.fdc.0.port="0x3F0"
hint.ppc.0.at="isa"
hint.ppc.0.irq="7"
hint.psm.0.at="atkbd"
hint.psm.0.irq="12"
hint.sc.0.at="isa"
hint.sc.0.flags="0x100"
hint.uart.0.at="isa"
hint.uart.0.flags="0x10"
hint.uart.0.irq="4"
hint.uart.0.port="0x3F8"
hint.uart.1.at="isa"
hint.uart.1.irq="3"
hint.uart.1.port="0x2F8"
hint.wbwd.0.at="isa"
interpret="OK"
kernel="kernel"
kernel[0]="kernel"
kernel[1]="kernel.old"
kernel_options=""
kernelname="/boot/kernel/kernel"
loaddev="disk0p2:"
loader_conf_files="/boot/device.hints /boot/loader.conf /boot/loader.conf.local"
mac_ifoff="NO"
module_path="/boot/kernel;/boot/modules"
smbios.bios.reldate="05/22/2014"
smbios.bios.vendor="American Megatrends Inc."
smbios.bios.version="4.6.0203"
smbios.chassis.maker="NEC"
smbios.chassis.serial="01"
smbios.chassis.tag="_____ "
smbios.chassis.version="856-180006-502"
smbios.memory.enabled="8388608"
smbios.planar.maker="GIGABYTE"
smbios.planar.product="GA-6LASV3"
smbios.planar.serial="0EG6U5800067"
smbios.planar.version="2.0A"
smbios.socket.enabled="1"
smbios.socket.populated="1"
smbios.system.maker="NEC"
smbios.system.product="Express5800/R110g-1E [N8100-2174Y]"
smbios.system.serial="4800112"
smbios.system.uuid="00ebd656-8e31-e411-8001-94de80ff25c3"
```

```
smbios.system.version="FR1.0"  
smbios.version="2.7"  
temp_options=""  
vfs.root.mountfrom="ufs:/dev/mfid0p2"  
vfs.root.mountfrom.options="rw"
```

# カーネルステートデータ詳細一覧

```
kern.ostype: FreeBSD
kern.osrelease: 10.1-RELEASE
kern.osrevision: 199506
kern.version: FreeBSD 10.1-RELEASE #0 r274401: Tue Nov 11 21:02:49 UTC 2014
root@releng1.nyi.freebsd.org:/usr/obj/usr/src/sys/GENERIC
kern.maxvnodes: 213352
kern.maxproc: 13492
kern.maxfiles: 259573
kern.argmax: 262144
kern.securelevel: -1
kern.hostname: verify.bsdconsulting.co.jp
kern.hostid: 1551666897
kern.clockrate: { hz = 1000, tick = 1000, profhz = 8128, stathz = 127 }
kern.posix1version: 200112
kern.ngroups: 1023
kern.job_control: 1
kern.saved_ids: 0
kern.boottime: { sec = 1425448139, usec = 533514 } Wed Mar 4 14:48:59 2015
kern.domainname:
kern.osreldate: 1001000
kern.bootfile: /boot/kernel/kernel
kern.maxfilesperproc: 233613
kern.maxproceruid: 12142
kern.ipc.maxsockbuf: 2097152
kern.ipc.sockbuf_waste_factor: 8
kern.ipc.max_linkhdr: 16
kern.ipc.max_protohdr: 60
kern.ipc.max_hdr: 76
kern.ipc.max_dataalen: 92
kern.ipc.maxmbufmem: 4133107712
kern.ipc.nmbclusters: 504530
kern.ipc.nmbjumbop: 252264
kern.ipc.nmbjumbo9: 224235
kern.ipc.nmbjumbo16: 168176
kern.ipc.nmbufs: 3228990
kern.ipc.maxpipekva: 132898816
kern.ipc.pipekva: 36864
kern.ipc.piperefragretry: 0
kern.ipc.pipeallocfail: 0
kern.ipc.piperesizefail: 0
kern.ipc.piperesizeallowed: 1
kern.ipc.msgmax: 16384
kern.ipc.msgmni: 40
kern.ipc.msgmnb: 2048
kern.ipc.msgqql: 40
kern.ipc.msgssz: 8
kern.ipc.msgseg: 2048
kern.ipc.semni: 50
kern.ipc.semms: 340
kern.ipc.semnu: 150
kern.ipc.semmsl: 340
kern.ipc.semopm: 100
kern.ipc.semume: 50
kern.ipc.semusz: 632
kern.ipc.semvmx: 32767
kern.ipc.semaem: 16384
kern.ipc.shmmax: 536870912
kern.ipc.shmmin: 1
kern.ipc.shmmni: 192
kern.ipc.shmseg: 128
kern.ipc.shmall: 131072
kern.ipc.shm_use_phys: 0
kern.ipc.shm_allow_removed: 0
kern.ipc.soacceptqueue: 128
kern.ipc.numopensockets: 15
kern.ipc.maxsockets: 259575
kern.ipc.sendfile.readahead: 1
kern.dummy: 0
kern.ps_strings: 140737488351200
kern.usrstack: 140737488351232
kern.logsigexit: 1
kern.iov_max: 1024
kern.hostuuid: 00ebd656-8e31-e411-8001-94de80ff25c3
kern.cam.sort_io_queues: 1
kern.cam.boot_delay: 0
kern.cam.num_doneqs: 1
kern.cam.dflags: 0
kern.cam.debug_delay: 0
kern.cam.pmp.retry_count: 1
kern.cam.pmp.default_timeout: 30
kern.cam.pmp.hide_special: 1
kern.cam.cam_srch_hi: 0
kern.cam.scsi_delay: 5000
```

kern.cam.cd.poll\_period: 3  
kern.cam.cd.retry\_count: 4  
kern.cam.cd.timeout: 30000  
kern.cam.cd.0.minimum\_cmd\_size: 6  
kern.cam.ada.legacy\_aliases: 1  
kern.cam.ada.retry\_count: 4  
kern.cam.ada.default\_timeout: 30  
kern.cam.ada.send\_ordered: 1  
kern.cam.ada.spindown\_shutdown: 1  
kern.cam.ada.spindown\_suspend: 1  
kern.cam.ada.read\_ahead: 1  
kern.cam.ada.write\_cache: 1  
kern.cam.da.poll\_period: 3  
kern.cam.da.retry\_count: 4  
kern.cam.da.default\_timeout: 60  
kern.cam.da.send\_ordered: 1  
kern.cam.da.0.delete\_method: NONE  
kern.cam.da.0.delete\_max: 65536  
kern.cam.da.0.minimum\_cmd\_size: 10  
kern.cam.da.0.sort\_io\_queue: -1  
kern.cam.da.0.error\_inject: 0  
kern.cam.enc.emulate\_array\_devices: 1  
kern.random.adaptors: dummy,yarrow  
kern.random.active\_adaptor: yarrow  
kern.random.live\_entropy\_sources: Hardware, Intel Secure Key RNG  
kern.random.yarrow.gengateinterval: 10  
kern.random.yarrow.bins: 10  
kern.random.yarrow.fastthresh: 96  
kern.random.yarrow.slowthresh: 128  
kern.random.yarrow.slowoverthresh: 2  
kern.random.sys.seeded: 1  
kern.random.sys.harvest.ethernet: 1  
kern.random.sys.harvest.point\_to\_point: 1  
kern.random.sys.harvest.interrupt: 1  
kern.random.sys.harvest.swi: 1  
kern.vt.enable\_altgr: 1  
kern.vt.debug: 0  
kern.vt.deadtimer: 15  
kern.vt.suspendswitch: 1  
kern.vt.kbd\_halt: 1  
kern.vt.kbd\_poweroff: 1  
kern.vt.kbd\_reboot: 1  
kern.vt.kbd\_debug: 1  
kern.vt.kbd\_panic: 0  
kern.disks: da0 cd0 mfid0  
kern.geom.dev.delete\_max\_sectors: 262144  
kern.geom.disk.mfid0.led:  
kern.geom.disk.cd0.led:  
kern.geom.disk.da0.led:  
kern.geom.transient\_maps: 0  
kern.geom.transient\_map\_retries: 10  
kern.geom.transient\_map\_hard\_failures: 0  
kern.geom.transient\_map\_soft\_failures: 0  
kern.geom.inflight\_transient\_maps: 0  
kern.geom.confxml: <mesh>  
kern.geom.confdot: digraph geom {  
kern.geom.conftxt: 0 DISK da0 3880452096 512 hd 255 sc 63  
kern.geom.debugflags: 0  
kern.geom.notaste: 0  
kern.geom.collectstats: 1  
kern.geom.label.debug: 0  
kern.geom.label.ext2fs.enable: 1  
kern.geom.label.iso9660.enable: 1  
kern.geom.label.msdosfs.enable: 1  
kern.geom.label.ntfs.enable: 1  
kern.geom.label.reiserfs.enable: 1  
kern.geom.label.ufsid.enable: 1  
kern.geom.label.ufs.enable: 1  
kern.geom.label.gpt.enable: 1  
kern.geom.label.gptid.enable: 1  
kern.geom.label.disk\_ident.enable: 1  
kern.geom.part.check\_integrity: 1  
kern.geom.part.mbr.enforce\_chs: 1  
kern.geom.raid.enable: 1  
kern.geom.raid.aggressive\_spare: 0  
kern.geom.raid.debug: 0  
kern.geom.raid.read\_err\_thresh: 10  
kern.geom.raid.start\_timeout: 30  
kern.geom.raid.clean\_time: 5  
kern.geom.raid.disconnect\_on\_failure: 1  
kern.geom.raid.name\_format: 0  
kern.geom.raid.idle\_threshold: 1000000  
kern.geom.raid.legacy\_aliases: 1  
kern.geom.raid.ddf.enable: 1  
kern.geom.raid.intel.enable: 1  
kern.geom.raid.jmicron.enable: 1  
kern.geom.raid.nvidia.enable: 1  
kern.geom.raid.promise.enable: 1

```
kern.geom.raid.sii.enable: 1
kern.geom.raid.concat.enable: 1
kern.geom.raid.raid0.enable: 1
kern.geom.raid.raid1.rebuild_slab_size: 1048576
kern.geom.raid.raid1.rebuild_fair_io: 20
kern.geom.raid.raid1.rebuild_cluster_idle: 100
kern.geom.raid.raid1.rebuild_meta_update: 1024
kern.geom.raid.raid1.enable: 1
kern.geom.raid.raid1e.rebuild_slab_size: 1048576
kern.geom.raid.raid1e.rebuild_fair_io: 20
kern.geom.raid.raid1e.rebuild_cluster_idle: 100
kern.geom.raid.raid1e.rebuild_meta_update: 1024
kern.geom.raid.raid1e.enable: 1
kern.geom.raid.raid5.enable: 1
kern.elf64.fallback_brand: -1
kern.elf64.nxstack: 1
kern.elf32.fallback_brand: -1
kern.elf32.nxstack: 1
kern.elf32.read_exec: 0
kern.init_path: /sbin/init:/sbin/oinit:/sbin/init.bak:/rescue/init
kern.init_shutdown_timeout: 120
kern.acct_suspend: 2
kern.acct_resume: 4
kern.acct_chkfreq: 15
kern.acct_configured: 0
kern.acct_suspended: 0
kern.cp_time: 98 0 487 20 13278
kern.cp_times: 49 0 463 13 6629 49 0 24 7 6649
kern.console: ttyv0,/ttyv0,uart,ttyv0,
kern.consmute: 0
kern.consmgbuf_size: 8192
kern.constty_wakeups_per_second: 5
kern.vty: sc
kern.openfiles: 66
kern.eventtimer.et.LAPIC.flags: 7
kern.eventtimer.et.LAPIC.frequency: 49885617
kern.eventtimer.et.LAPIC.quality: 600
kern.eventtimer.et.HPET.flags: 7
kern.eventtimer.et.HPET.frequency: 14318180
kern.eventtimer.et.HPET.quality: 550
kern.eventtimer.et.HPET1.flags: 3
kern.eventtimer.et.HPET1.frequency: 14318180
kern.eventtimer.et.HPET1.quality: 440
kern.eventtimer.et.HPET2.flags: 3
kern.eventtimer.et.HPET2.frequency: 14318180
kern.eventtimer.et.HPET2.quality: 440
kern.eventtimer.et.HPET3.flags: 3
kern.eventtimer.et.HPET3.frequency: 14318180
kern.eventtimer.et.HPET3.quality: 440
kern.eventtimer.et.HPET4.flags: 3
kern.eventtimer.et.HPET4.frequency: 14318180
kern.eventtimer.et.HPET4.quality: 440
kern.eventtimer.et.HPET5.flags: 3
kern.eventtimer.et.HPET5.frequency: 14318180
kern.eventtimer.et.HPET5.quality: 440
kern.eventtimer.et.HPET6.flags: 3
kern.eventtimer.et.HPET6.frequency: 14318180
kern.eventtimer.et.HPET6.quality: 440
kern.eventtimer.et.RTC.flags: 17
kern.eventtimer.et.RTC.frequency: 32768
kern.eventtimer.et.RTC.quality: 0
kern.eventtimer.et.i8254.flags: 1
kern.eventtimer.et.i8254.frequency: 1193182
kern.eventtimer.et.i8254.quality: 100
kern.eventtimer.choice: LAPIC(600) HPET(550) HPET1(440) HPET2(440) HPET3(440) HPET4(440) HPET5(440) HPET6(440) i8254(100) RTC(0)
kern.eventtimer.singlemul: 2
kern.eventtimer.idletick: 0
kern.eventtimer.timer: LAPIC
kern.eventtimer.periodic: 0
kern.kq_calloutmax: 4096
kern.stackprot: 7
kern.ps_arg_cache_limit: 256
kern.disallow_high_osrel: 0
kern.lastpid: 876
kern.randompid: 0
kern.ktrace.genio_size: 4096
kern.ktrace.request_pool: 100
kern.module_path: /boot/kernel;/boot/modules
kern.malloc_count: 357
kern.ident: GENERIC
kern.compiler_version: FreeBSD clang version 3.4.1 (tags/RELEASE_34/dot1-final 208032) 20140512
kern.maxusers: 842
kern.supported_archs: amd64 i386
kern.conftxt: options CONFIG_AUTOGENERATED
kern.features.scbus: 1
kern.features.compat_freebsd_32bit: 1
kern.features.ata_cam: 1
kern.features.nfscl: 1
```

kern.features.nfsd: 1  
kern.features.geom\_label: 1  
kern.features.geom\_part\_bsd: 1  
kern.features.geom\_part\_ebr: 1  
kern.features.geom\_part\_ebr\_compat: 1  
kern.features.geom\_part\_gpt: 1  
kern.features.geom\_part\_mbr: 1  
kern.features.kposix\_priority\_scheduling: 1  
kern.features.kdtrace\_hooks: 1  
kern.features.ktrace: 1  
kern.features.compat\_freebsd4: 1  
kern.features.compat\_freebsd5: 1  
kern.features.compat\_freebsd6: 1  
kern.features.compat\_freebsd7: 1  
kern.features.hwpmc\_hooks: 1  
kern.features.stack: 1  
kern.features.security\_capability\_mode: 1  
kern.features.security\_capabilities: 1  
kern.features.process\_descriptors: 1  
kern.features.sysv\_msg: 1  
kern.features.sysv\_sem: 1  
kern.features.sysv\_shm: 1  
kern.features.posix\_shm: 1  
kern.features.inet: 1  
kern.features.sctp: 1  
kern.features.inet6: 1  
kern.features.audit: 1  
kern.features.security\_mac: 1  
kern.features.ffmpeg\_snapshot: 1  
kern.features.softupdates: 1  
kern.features.ufs\_acl: 1  
kern.features.ufs\_gjournal: 1  
kern.features.ufs\_quota: 1  
kern.features.ufs\_quota64: 1  
kern.pid\_max: 99999  
kern.fallback\_elf\_brand: -1  
kern.hwpmc.softevents: 16  
kern.kstack\_pages: 4  
kern.proc\_vmmmap\_skip\_resident\_count: 0  
kern.panic\_reboot\_wait\_time: 15  
kern.sync\_on\_panic: 0  
kern.shutdown.show\_busybufs: 0  
kern.shutdown.poweroff\_delay: 5000  
kern.shutdown.kproc\_shutdown\_wait: 60  
kern.shutdown.dumpdevname: mfid0p3  
kern.forcesigexit: 1  
kern.sigqueue.max\_pending\_per\_proc: 128  
kern.sigqueue.preallocate: 1024  
kern.sigqueue.overflow: 0  
kern.sigqueue.alloc\_fail: 0  
kern.sugid\_coredump: 0  
kern.capmode\_coredump: 0  
kern.coredump: 1  
kern.nodump\_coredump: 0  
kern.corefile: %N.core  
kern.fscale: 2048  
kern.timecounter.tc.HPET.mask: 4294967295  
kern.timecounter.tc.HPET.counter: 1978436493  
kern.timecounter.tc.HPET.frequency: 14318180  
kern.timecounter.tc.HPET.quality: 950  
kern.timecounter.tc.i8254.mask: 65535  
kern.timecounter.tc.i8254.counter: 27514  
kern.timecounter.tc.i8254.frequency: 1193182  
kern.timecounter.tc.i8254.quality: 0  
kern.timecounter.tc.ACPI-fast.mask: 16777215  
kern.timecounter.tc.ACPI-fast.counter: 4970153  
kern.timecounter.tc.ACPI-fast.frequency: 3579545  
kern.timecounter.tc.ACPI-fast.quality: 900  
kern.timecounter.tc.TSC-low.mask: 4294967295  
kern.timecounter.tc.TSC-low.counter: 544430741  
kern.timecounter.tc.TSC-low.frequency: 1546453840  
kern.timecounter.tc.TSC-low.quality: 1000  
kern.timecounter.stepwarnings: 0  
kern.timecounter.alloweddeviation: 5  
kern.timecounter.hardware: TSC-low  
kern.timecounter.choice: TSC-low(1000) ACPI-fast(900) i8254(0) HPET(950) dummy(-1000000)  
kern.timecounter.tick: 1  
kern.timecounter.fast\_gettime: 1  
kern.timecounter.invariant\_tsc: 1  
kern.timecounter.smp\_tsc: 1  
kern.timecounter.smp\_tsc\_adjust: 0  
kern.timecounter.tsc\_shift: 1  
kern.threads.max\_threads\_per\_proc: 1500  
kern.threads.max\_threads\_hits: 0  
kern.ncallout: 18508  
kern.callout\_stat: 0  
kern.sched.cpusetsize: 8  
kern.sched.preemption: 1

```

kern.sched.name: ULE
kern.sched.quantum: 94488
kern.sched.slice: 12
kern.sched.interact: 30
kern.sched.preempt_thresh: 80
kern.sched.static_boost: 152
kern.sched.idlespins: 10000
kern.sched.idlespinthresh: 157
kern.sched.affinity: 1
kern.sched.balance: 1
kern.sched.balance_interval: 127
kern.sched.steal_idle: 1
kern.sched.steal_thresh: 2
kern.sched.topology_spec: <groups>
kern.ccpu: 0
kern.devstat.numdevs: 5
kern.devstat.generation: 159
kern.devstat.version: 6
kern.hintmode: 0
kern.kobj_methodcount: 229
kern.log_wakeups_per_second: 5
kern.msgbuf_show_timestamp: 0
kern.hz: 1000
kern.nbuf: 52579
kern.nswbuf: 256
kern.msgbufsize: 98304
kern.maxswzone: 0
kern.maxbcache: 0
kern.bio_transient_maxcnt: 1024
kern.maxtsiz: 13421728
kern.dfldsiz: 34359738368
kern.maxdsiz: 34359738368
kern.dflsiz: 8388608
kern.maxssiz: 536870912
kern.sgrowsiz: 131072
kern.vm_guest: none
kern.log_console_output: 1
kern.log_console_add_linefeed: 0
kern.always_console_output: 0
kern.msgbuf: 9m[20;65H[25;1H[?1l>[1;25r[m[4l[?1h=[39;49m[?1h=[?1h=[39;49m[m[H[2J[19B[36m[44m[1m[J[H FreeBSD Installer[K
<118>Please select a password for the system management account (root):
<118>New Password:
<118>Retype New Password:
<118>[37m[47m[0x(B[m[30m[47m Please select a network interface to configure: (0x(B[30m[40m[1m[K
<5>bge0: link state changed to DOWN
<5>bge0: link state changed to UP
<118> [37m[47m[0x(B[m[30m[47m Choose the services you would like to be started at boot: (0x(B[30m[40m[1m [36m[44m[K
<118> [30m[40m [36m[44m[K[15;30H[39;49m[m[10;27H[30m[47mInstallation of FreeBSD
[11;27Hcomplete! Would you like[12;27Hto reboot into the[13;27Hinstalled system now?[15;30H[39;49m[m[17;56H[25;1H[?1l>Mar 4 14:47:26
reboot: rebooted by root
<118>Mar 4 14:47:26 syslogd: exiting on signal 15
FreeBSD 10.1-RELEASE #0 r274401: Tue Nov 11 21:02:49 UTC 2014
root@releng1.nyi.freebsd.org:/usr/obj/usr/src/sys/GENERIC amd64
CPU: Intel(R) Pentium(R) CPU G3240 @ 3.10GHz (3092.91-MHz K8-class CPU)
VT-x: PAT,HLT,MTF,PAUSE,EPT,UG,VPID
TSC: P-state invariant, performance statistics
ACPI APIC Table: <AMI 06A0 >
FreeBSD/SMP: Multiprocessor System Detected: 2 CPUs
FreeBSD/SMP: 1 package(s) x 2 core(s)
cpu0 (BSP): APIC ID: 0
cpu1 (AP): APIC ID: 2
random: <Software, Yarrow> initialized
acpi0: <AMI 06A0> on motherboard
acpi0: Power Button (fixed)
acpi0: reservation of 0, a0000 (3) failed
cpu0: <ACPI CPU> on acpi0
cpu1: <ACPI CPU> on acpi0
hpet0: <High Precision Event Timer> iomem 0xfed00000-0xfed003ff on acpi0
atrtc0: <AT realtime clock> port 0x70-0x77 irq 8 on acpi0
attimer0: <AT timer> port 0x40-0x43,0x50-0x53 irq 0 on acpi0
acpi_timer0: <24-bit timer at 3.579545MHz> port 0x1808-0x180b on acpi0
pcib0: <ACPI Host-PCI bridge> port 0xcf8-0xcff on acpi0
pci0: <ACPI PCI bus> on pcib0
xhci0: <Intel Lynx Point USB 3.0 controller> mem 0xdfa00000-0xdfa0ffff irq 16 at device 20.0 on pci0
xhci0: 32 byte context size.
xhci0: Port routing mask set to 0xffffffff
pci0: <simple comms> at device 22.0 (no driver attached)
pci0: <simple comms> at device 22.1 (no driver attached)
ehci0: <Intel Lynx Point USB 2.0 controller USB-B> mem 0xdfa12000-0xdfa123ff irq 16 at device 26.0 on pci0
usb0: EHCI version 1.0
pcib1: <ACPI PCI-PCI bridge> irq 16 at device 28.0 on pci0
pci33: <ACPI PCI bus> on pcib1
LSI MegaRAID SAS FreeBSD mrsas driver version: 06.704.01.01-fbsd
mfi0: <ThunderBolt> port 0xe000-0xe0ff mem 0xdf960000-0xdf963fff,0xdf900000-0xdf93ffff irq 16 at device 0.0 on pci33
mfi0: Using MSI
mfi0: Megaraid SAS driver Ver 4.23
mfi0: FW MaxCmds = 1008, limiting to 128
mfi0: MaxCmd = 1008, Drv MaxCmd = 128, MaxSgl = 70, state = 0xb75003f0

```

```

pcib2: <ACPI PCI-PCI bridge> irq 16 at device 28.4 on pci0
pcib2: failed to allocate initial memory window: 0xde000000-0xdf8fffff
pci57: <ACPI PCI bus> on pcib2
vgapci0: <VGA-compatible display> mem 0xde000000-0xdeffffff,0xdf000000-0xdf7fffff irq 16 at device 0.0 on pci57
vgapci0: Boot video device
pcib3: <ACPI PCI-PCI bridge> irq 17 at device 28.5 on pci0
pci58: <ACPI PCI bus> on pcib3
bge0: <Broadcom NetXtreme Gigabit Ethernet Controller, ASIC rev. 0x5717100> mem
0xdfe50000-0xdfe5ffff,0xdfe40000-0xdfe4ffff,0xdfe30000-0xdfe3ffff irq 17 at device 0.0 on pci58
bge0: APE FW version: NCSI v1.2.33.0
bge0: CHIP ID 0x05717100; ASIC REV 0x5717; CHIP REV 0x57171; PCI-E
miibus0: <MII bus> on bge0
brgphy0: <BCM5717C 1000BASE-T media interface> PHY 1 on miibus0
brgphy0: 10baseT, 10baseT-FDX, 100baseTX, 100baseTX-FDX, 1000baseT, 1000baseT-master, 1000baseT-FDX, 1000baseT-FDX-master, auto,
auto-flow
bge0: Ethernet address: 94:de:80:ff:25:96
bge1: <Broadcom NetXtreme Gigabit Ethernet Controller, ASIC rev. 0x5717100> mem
0xdfe20000-0xdfe2ffff,0xdfe10000-0xdfe1ffff,0xdfe00000-0xdfe0ffff irq 18 at device 0.1 on pci58
bge1: APE FW version: NCSI v1.2.33.0
bge1: CHIP ID 0x05717100; ASIC REV 0x5717; CHIP REV 0x57171; PCI-E
miibus1: <MII bus> on bge1
brgphy1: <BCM5717C 1000BASE-T media interface> PHY 2 on miibus1
brgphy1: 10baseT, 10baseT-FDX, 100baseTX, 100baseTX-FDX, 1000baseT, 1000baseT-master, 1000baseT-FDX, 1000baseT-FDX-master, auto,
auto-flow
bge1: Ethernet address: 94:de:80:ff:25:97
ehci1: <Intel Lynx Point USB 2.0 controller USB-A> mem 0xdfa11000-0xdfa113ff irq 23 at device 29.0 on pci0
usb2: EHCI version 1.0
isab0: <PCI-ISA bridge> at device 31.0 on pci0
isa0: <ISA bus> on isab0
atapci0: <Intel Lynx Point SATA300 controller> port 0xf0d0-0xf0d7,0xf0c0-0xf0c3,0xf0b0-0xf0b7,0xf0a0-0xf0a3,0xf090-0xf09f,0xf080-0xf08f
irq 19 at device 31.2 on pci0
ata2: <ATA channel> at channel 0 on atapci0
ata3: <ATA channel> at channel 1 on atapci0
atapci1: <Intel Lynx Point SATA300 controller> port 0xf070-0xf077,0xf060-0xf063,0xf050-0xf057,0xf040-0xf043,0xf030-0xf03f,0xf020-0xf02f
irq 19 at device 31.5 on pci0
ata4: <ATA channel> at channel 0 on atapci1
ata5: <ATA channel> at channel 1 on atapci1
acpi_button0: <Sleep Button> on acpi0
acpi_button1: <Power Button> on acpi0
uart0: <16550 or compatible> port 0x3f8-0x3ff irq 4 flags 0x10 on acpi0
uart1: <16550 or compatible> port 0x2f8-0x2ff irq 3 on acpi0
orm0: <ISA Option ROMs> at iomem 0xc0000-0xc7fff,0xcf800-0xd27ff on isa0
sc0: <System console> at flags 0x100 on isa0
sc0: VGA <16 virtual consoles, flags=0x300>
vga0: <Generic ISA VGA> at port 0x3c0-0x3df iomem 0xa0000-0xbffff on isa0
ppc0: cannot reserve I/O port range
est0: <Enhanced SpeedStep Frequency Control> on cpu0
p4tcc0: <CPU Frequency Thermal Control> on cpu0
est1: <Enhanced SpeedStep Frequency Control> on cpu1
p4tcc1: <CPU Frequency Thermal Control> on cpu1
mfi0: 2073 (478795655s/0x0020/info) - Shutdown command received from host
mfi0: 2074 (boot + 8s/0x0020/info) - Firmware initialization started (PCI ID 005b/1000/9272/1000)
mfi0: 2075 (boot + 8s/0x0020/info) - Firmware version 3.230.115-3241
mfi0: 2076 (boot + 10s/0x0008/info) - Battery Present
mfi0: 2077 (boot + 10s/0x0008/info) - Battery Present
mfi0: 2078 (boot + 25s/0x0020/info) - Package version 23.11.0-0038
mfi0: 2079 (boot + 25s/0x0020/info) - Board Revision 100
mfi0: 2080 (boot + 43s/0x0002/info) - Inserted: PD 08(e0xfc/s0)
mfi0: 2081 (boot + 43s/0x0002/info) - Inserted: PD 08(e0xfc/s0) Info: enclPd=fc, scsiType=0, portMap=00,
sasAddr=5000cca045069231,0000000000000000
mfi0: 2082 (478795704s/0x0020/info) - Time established as 03/04/15 14:48:24; (47 seconds since power on)
mfi0: 2083 (478795737s/0x0008/info) - Battery temperature is normal
mfi0: 2084 (478795738s/0x0020/info) - Host driver is loaded and operational
random: unblocking device.
usb0: 5.0Gbps Super Speed USB v3.0
usb1: 480Mbps High Speed USB v2.0
usb2: 480Mbps High Speed USB v2.0
ugen1.1: <Intel> at usb1
uhub0: <Intel EHCI root HUB, class 9/0, rev 2.00/1.00, addr 1> on usb1
ugen0.1: <0x8086> at usb0
uhub1: <0x8086 XHCI root HUB, class 9/0, rev 3.00/1.00, addr 1> on usb0
ugen2.1: <Intel> at usb2
uhub2: <Intel EHCI root HUB, class 9/0, rev 2.00/1.00, addr 1> on usb2
mfi0: 139200MB (285081600 sectors) RAID volume 'array0' is optimal
uhub0: 2 ports with 2 removable, self powered
uhub2: 2 ports with 2 removable, self powered
uhub1: 21 ports with 21 removable, self powered
ugen0.2: <Chicony> at usb0
uhub3: <Chicony Generic USB Hub, class 9/0, rev 1.10/1.02, addr 1> on usb0
ugen1.2: <vendor 0x8087> at usb1
uhub4: <vendor 0x8087 product 0x8008, class 9/0, rev 2.00/0.04, addr 2> on usb1
ugen2.2: <vendor 0x8087> at usb2
uhub5: <vendor 0x8087 product 0x8000, class 9/0, rev 2.00/0.04, addr 2> on usb2
cd0: <MATSHITA DVD-ROM UJ8E0 1.00> Removable CD-ROM SCSI-0 device
cd0: Serial Number SP00I2R02764
cd0: 150.000MB/s transfers (SATA 1.x, UDMA5, ATAPI 12bytes, PIO 8192bytes)
cd0: Attempt to query device size failed: NOT READY, Medium not present - tray closed
uhub4: 6 ports with 6 removable, self powered

```



```

uhub5: 6 ports with 6 removable, self powered
uhub3: 3 ports with 2 removable, bus powered
SMP: AP CPU #1 Launched!
Root mount waiting for: usb0
ugen0.3: <Chicony> at usb0
ukbd0: <Chicony PFU-65 USB Keyboard, class 0/0, rev 1.10/1.02, addr 2> on usb0
Root mount waiting for: usb0
ugen0.4: <American Megatrends Inc.> at usb0
ukbd1: <Keyboard Interface> on usb0
Trying to mount root from ufs:/dev/mfid0p2 [rw]...
<118>Setting hostuid: 00ebd656-8e31-e411-8001-94de80ff25c3.
<118>Setting hostid: 0x5c7c8ed1.
<118>Entropy harvesting: interrupts ethernet point_to_point swi.
<118>Starting file system checks:
<118>/dev/mfid0p2: FILE SYSTEM CLEAN; SKIPPING CHECKS
<118>/dev/mfid0p2: clean, 32859100 free (1916 frags, 4107148 blocks, 0.0% fragmentation)
<118>Mounting local file systems:.
<118>Writing entropy file:.
<118>Setting hostname: verify.bsdconsulting.co.jp.
<118>Starting Network: lo0 bge0 bge1.
<118>lo0: flags=8049<UP,LOOPBACK,RUNNING,MULTICAST> metric 0 mtu 16384
<118>  inet6 ::1 prefixlen 128
<118>  inet6 fe80::1%lo0 prefixlen 64 scopeid 0x3
<118>bge0: flags=8843<UP,BROADCAST,RUNNING,SIMPLEX,MULTICAST> metric 0 mtu 1500
<118>  ether 94:de:80:ff:25:96
<118>  media: Ethernet autoselect (none)
<118>  status: no carrier
<118>bge1: flags=8802<BROADCAST,SIMPLEX,MULTICAST> metric 0 mtu 1500
<118>  ether 94:de:80:ff:25:97
<118>  media: Ethernet autoselect
<118>Starting Network: bge1.
<118>bge1: flags=8802<BROADCAST,SIMPLEX,MULTICAST> metric 0 mtu 1500
<118>  ether 94:de:80:ff:25:97
<118>  media: Ethernet autoselect
ums0: <Mouse Interface> on usb0
ums0: 3 buttons and [Z] coordinates ID=0
<118>add net fe80:: gateway ::1
<118>add net ff02:: gateway ::1
<118>add net ::ffff:0.0.0.0: gateway ::1
<118>add net ::0.0.0.0: gateway ::1
<118>Waiting 30s for the default route interface: ....(bge0)
<118>ELF ldconfig path: /lib /usr/lib /usr/lib/compat
<118>32-bit compatibility ldconfig path: /usr/lib32
<118>Updating motd:.
<118>Mounting late file systems:.
<118>Configuring syscons: blanktime.
<118>2048 16:ec:94:92:36:a1:15:4e:aa:47:5e:d6:fb:3a:96:61 root@verify.bsdconsulting.co.jp (RSA1)
<118>2048 ec:c7:87:4b:79:3f:17:1f:1e:a4:54:b7:29:b7:cc:3e root@verify.bsdconsulting.co.jp (RSA)
<118>1024 e5:1d:75:23:6e:98:50:3b:b3:bc:69:aa:c8:58:95:b3 root@verify.bsdconsulting.co.jp (DSA)
<118>256 96:66:39:84:e9:d7:03:fd:78:f9:88:7c:fb:1f:c6:4b root@verify.bsdconsulting.co.jp (ECDSA)
<118>256 f3:77:bd:7e:ba:99:d4:af:78:45:0b:30:c6:81:23:88 root@verify.bsdconsulting.co.jp (ED25519)
<118>Wed Mar  4 14:49:15 JST 2015
ugen0.5: <UFD 2.0> at usb0
umass0: <UFD 2.0 Silicon-Power4G, class 0/0, rev 2.00/1.00, addr 4> on usb0
umass0: SCSI over Bulk-Only; quirks = 0x4100
umass0:4:0:-1: Attached to scbus4
da0: <UFD 2.0 Silicon-Power4G PMAP> Removable Direct Access SCSI-4 device
da0: Serial Number 12101504058E6002A8B89180B31
da0: 40.000MB/s transfers
da0: 3700MB (7579008 512 byte sectors: 255H 63S/T 471C)
da0: quirks=0x2<NO_6_BYTE>
<118>Mar  4 14:49:30 verify login: ROOT LOGIN (root) ON ttyv0
kern.msgbuf_clear: 0
kern.smp.maxid: 1
kern.smp.maxcpus: 64
kern.smp.active: 1
kern.smp.disabled: 0
kern.smp.cpus: 2
kern.smp.topology: 0
kern.smp.forward_signal_enabled: 1
kern.tty_inq_flush_secure: 1
kern.tty_nin: 116
kern.tty_nout: 5284
kern.filedelay: 30
kern.dirdelay: 29
kern.metadelat: 28
kern.minvnodes: 5338
kern.chroot_allow_open_directories: 1
vm.vmtotal:
System wide totals computed every five seconds: (values in kilobytes)
Processes:          (RUNQ: 1 Disk Wait: 0 Page Wait: 0 Sleep: 23)
Virtual Memory:    (Total: 497516K Active: 475440K)
Real Memory:       (Total: 88188K Active: 26940K)
Shared Virtual Memory: (Total: 16644K Active: 5704K)
Shared Real Memory: (Total: 5780K Active: 5272K)
Free Memory:       7929552K
vm.loadavg: { 0.64 0.27 0.11 }
vm.v_free_min: 12766

```

vm.v\_free\_target: 43033  
vm.v\_free\_reserved: 2677  
vm.v\_inactive\_target: 64549  
vm.v\_cache\_min: 0  
vm.v\_cache\_max: 0  
vm.v\_pageout\_free\_min: 34  
vm.swap\_enabled: 1  
vm.md\_malloc\_wait: 0  
vm.kmem\_size: 8266215424  
vm.kmem\_zmax: 65536  
vm.kmem\_size\_min: 0  
vm.kmem\_size\_max: 1319413950874  
vm.kmem\_size\_scale: 1  
vm.kmem\_map\_size: 19353600  
vm.kmem\_map\_free: 8246861824  
vm.swap\_total: 4227821568  
vm.swap\_reserved: 269303808  
vm.overcommit: 0  
vm.swzone: 290608992  
vm.swap\_maxpages: 32289888  
vm.swap\_async\_max: 4  
vm.dmmx: 32  
vm.nswapdev: 1  
vm.zone\_count: 106  
vm.zone\_warnings: 1  
vm.kstack\_cache\_size: 128  
vm.kstacks: 95  
vm.swap\_idle\_threshold1: 2  
vm.swap\_idle\_threshold2: 10  
vm.exec\_map\_entries: 16  
vm.min\_kernel\_address: 18446741874686296064  
vm.max\_kernel\_address: 18446744073709547520  
vm.v\_free\_severe: 7721  
vm.stats.sys.v\_swch: 51055  
vm.stats.sys.v\_trap: 71766  
vm.stats.sys.v\_syscall: 336699  
vm.stats.sys.v\_intr: 6628  
vm.stats.sys.v\_soft: 1844  
vm.stats.vm.v\_vm\_faults: 69680  
vm.stats.vm.v\_io\_faults: 687  
vm.stats.vm.v\_cow\_faults: 26057  
vm.stats.vm.v\_cow\_optim: 151  
vm.stats.vm.v\_zfod: 35252  
vm.stats.vm.v\_ozfod: 0  
vm.stats.vm.v\_swapin: 0  
vm.stats.vm.v\_swapout: 0  
vm.stats.vm.v\_swappgsin: 0  
vm.stats.vm.v\_swappgsout: 0  
vm.stats.vm.v\_vnodein: 780  
vm.stats.vm.v\_vnodeout: 0  
vm.stats.vm.v\_vnodepgsin: 3794  
vm.stats.vm.v\_vnodepgsout: 0  
vm.stats.vm.v\_intrans: 0  
vm.stats.vm.v\_reactivated: 0  
vm.stats.vm.v\_pdwakeups: 0  
vm.stats.vm.v\_pdpages: 229  
vm.stats.vm.v\_tcached: 304  
vm.stats.vm.v\_dfree: 0  
vm.stats.vm.v\_pfree: 43287  
vm.stats.vm.v\_tfree: 97786  
vm.stats.vm.v\_page\_size: 4096  
vm.stats.vm.v\_page\_count: 2018119  
vm.stats.vm.v\_free\_reserved: 2677  
vm.stats.vm.v\_free\_target: 43033  
vm.stats.vm.v\_free\_min: 12766  
vm.stats.vm.v\_free\_count: 1982083  
vm.stats.vm.v\_wire\_count: 27653  
vm.stats.vm.v\_active\_count: 3900  
vm.stats.vm.v\_inactive\_target: 64549  
vm.stats.vm.v\_inactive\_count: 4178  
vm.stats.vm.v\_cache\_count: 304  
vm.stats.vm.v\_cache\_min: 0  
vm.stats.vm.v\_cache\_max: 0  
vm.stats.vm.v\_pageout\_free\_min: 34  
vm.stats.vm.v\_interrupt\_free\_min: 2  
vm.stats.vm.v\_forks: 621  
vm.stats.vm.v\_vforks: 240  
vm.stats.vm.v\_rforks: 0  
vm.stats.vm.v\_kthreads: 15  
vm.stats.vm.v\_forkpages: 23054  
vm.stats.vm.v\_vforkpages: 8678  
vm.stats.vm.v\_rforkpages: 0  
vm.stats.vm.v\_kthreadpages: 0  
vm.stats.misc.zero\_page\_count: 39  
vm.stats.misc.cnt\_prezero: 0  
vm.stats.object.collapses: 1885  
vm.stats.object.bypasses: 243  
vm.old\_mlock: 0

vm.old\_msync: 0  
vm.boot\_pages: 64  
vm.tryrelock\_restart: 0  
vm.pageout\_wakeup\_thresh: 14036  
vm.max\_laundry: 32  
vm.pageout\_update\_period: 600  
vm.lowmem\_period: 10  
vm.swap\_idle\_enabled: 0  
vm.defer\_swapspace\_pageouts: 0  
vm.disable\_swapspace\_pageouts: 0  
vm.pageout\_lock\_miss: 0  
vm.max\_wired: 666051  
vm.phys\_free:  
DOMAIN 0:  
FREE LIST 0:  
FREE LIST 1:  
vm.phys\_segs:  
SEGMENT 0:  
start: 0x10000  
end: 0x94000  
domain: 0  
free list: 0xffffffff815d14b8  
SEGMENT 1:  
start: 0x100000  
end: 0x200000  
domain: 0  
free list: 0xffffffff815d14b8  
SEGMENT 2:  
start: 0x197c000  
end: 0xb9850000  
domain: 0  
free list: 0xffffffff815d1110  
SEGMENT 3:  
start: 0xb9857000  
end: 0xcc7a8000  
domain: 0  
free list: 0xffffffff815d1110  
SEGMENT 4:  
start: 0xcf7ff000  
end: 0xcf800000  
domain: 0  
free list: 0xffffffff815d1110  
SEGMENT 5:  
start: 0x100000000  
end: 0x221b9d000  
domain: 0  
free list: 0xffffffff815d1110  
vm.ndomains: 1  
vm.reserv.broken: 0  
vm.reserv.freed: 3031  
vm.reserv.partpopq:  
-1: 158984K, 86  
vm.reserv.reclaimed: 0  
vm.idlezero\_enable: 0  
vm.pmap.pat\_works: 1  
vm.pmap.pg\_ps\_enabled: 1  
vm.pmap.pcid\_enabled: 0  
vm.pmap.invpnid\_works: 0  
vm.pmap.pcid\_save\_cnt: 0  
vm.pmap.pde.demotions: 28  
vm.pmap.pde.mappings: 0  
vm.pmap.pde.p\_failures: 18  
vm.pmap.pde.promotions: 46  
vm.pmap.pdpe.demotions: 2  
vm.kvm\_size: 2199023251456  
vm.kvm\_free: 2189544124416  
vfs.ufs.dirhash\_minsize: 2560  
vfs.ufs.dirhash\_maxmem: 13451264  
vfs.ufs.dirhash\_mem: 56839  
vfs.ufs.dirhash\_docheck: 0  
vfs.ufs.dirhash\_lowmemcount: 0  
vfs.ufs.dirhash\_reclaimage: 60  
vfs.ufs.rename\_restarts: 0  
vfs.nfs.downdelayinitial: 12  
vfs.nfs.downdelayinterval: 30  
vfs.nfs.bufpackets: 4  
vfs.nfs.reconnects: 0  
vfs.nfs.nfs3\_jukebox\_delay: 10  
vfs.nfs.skip\_wcc\_data\_onerr: 1  
vfs.nfs.realign\_test: 0  
vfs.nfs.realign\_count: 0  
vfs.nfs.callback\_addr:  
vfs.nfs.debuglevel: 0  
vfs.nfs.access\_cache\_timeout: 60  
vfs.nfs.prime\_access\_cache: 0  
vfs.nfs.commit\_on\_close: 0  
vfs.nfs.clean\_pages\_on\_close: 1  
vfs.nfs.nfs\_directio\_enable: 0

vfs.nfs.nfs\_keep\_dirty\_on\_error: 0  
vfs.nfs.nfs\_directio\_allow\_mmap: 1  
vfs.nfs.nfs\_ip\_paranoia: 1  
vfs.nfs.diskless\_valid: 0  
vfs.nfs.diskless\_rootpath:  
vfs.nfs.iodmaxidle: 120  
vfs.nfs.iodmin: 0  
vfs.nfs.iodmax: 20  
vfs.nfs.defect: 0  
vfs.devfs.generation: 128  
vfs.devfs.rule\_depth: 1  
vfs.nfsd.disable\_checkutf8: 0  
vfs.nfsd.nfs\_privport: 0  
vfs.nfsd.server\_min\_nfsvers: 2  
vfs.nfsd.server\_max\_nfsvers: 4  
vfs.nfsd.async: 0  
vfs.nfsd.mirrormnt: 1  
vfs.nfsd.commit\_blks: 0  
vfs.nfsd.commit\_miss: 0  
vfs.nfsd.issue\_delegations: 0  
vfs.nfsd.enable\_locallocks: 0  
vfs.nfsd.debuglevel: 0  
vfs.nfsd.enable\_stringtoid: 0  
vfs.nfsd.tcphighwater: 0  
vfs.nfsd.udphighwater: 500  
vfs.nfsd.tpcachetimeo: 43200  
vfs.nfsd.cachetcp: 1  
vfs.nfsd.minthreads: 1  
vfs.nfsd.maxthreads: 1  
vfs.nfsd.threads: 0  
vfs.nfsd.groups: 1  
vfs.nfsd.request\_space\_used: 0  
vfs.nfsd.request\_space\_used\_highest: 0  
vfs.nfsd.request\_space\_high: 47185920  
vfs.nfsd.request\_space\_low: 31457280  
vfs.nfsd.request\_space\_throttled: 0  
vfs.nfsd.request\_space\_throttle\_count: 0  
vfs.nfsd.fha.enable: 1  
vfs.nfsd.fha.bin\_shift: 22  
vfs.nfsd.fha.max\_nfsds\_per\_fh: 8  
vfs.nfsd.fha.max\_reqs\_per\_nfsd: 0  
vfs.nfsd.fha.fhe\_stats: No file handle entries.  
vfs.pfs.trace: 0  
vfs.pfs.vncache.entries: 0  
vfs.pfs.vncache.maxentries: 0  
vfs.pfs.vncache.hits: 0  
vfs.pfs.vncache.misses: 0  
vfs.acl\_nfs4\_old\_semantics: 0  
vfs.vmioidirenable: 1  
vfs.runningbufspace: 0  
vfs.bufspace: 49283072  
vfs.unmapped\_bufspace: 27328512  
vfs.maxbufspace: 861454336  
vfs.bufmallocspace: 0  
vfs.maxmallocbufspace: 43039948  
vfs.lobufspace: 860733440  
vfs.hibufspace: 860798976  
vfs.bufreuscnt: 2090  
vfs.bufreekvacnt: 101  
vfs.bufdefragcnt: 0  
vfs.lorunningspace: 9043968  
vfs.hirunningspace: 13500416  
vfs.dirtybufferflushes: 0  
vfs.bdwriteskip: 0  
vfs.altbufferflushes: 0  
vfs.recursiveflushes: 44  
vfs.numdirtybuffers: 382  
vfs.lodirtybuffers: 6582  
vfs.hidirtybuffers: 13164  
vfs.dirtybufthresh: 11847  
vfs.numfreebuffers: 52195  
vfs.lofreebuffers: 2926  
vfs.hifreebuffers: 5852  
vfs.getnewbufcalls: 2112  
vfs.getnewbufrestarts: 0  
vfs.mappingrestarts: 0  
vfs.flushbufqtarget: 100  
vfs.notbufdflushes: 0  
vfs.barrierwrites: 3  
vfs.unmapped\_buf\_allowed: 1  
vfs.flushwithdeps: 0  
vfs.ncnegfactor: 16  
vfs.ncsizefactor: 2  
vfs.cache.numneg: 42  
vfs.cache.numcache: 877  
vfs.cache.numcalls: 45889  
vfs.cache.dothits: 812  
vfs.cache.dotdothits: 11

vfs.cache.numchecks: 41931  
vfs.cache.nummiss: 3104  
vfs.cache.nummisszap: 33  
vfs.cache.numposzaps: 35  
vfs.cache.numposhits: 36070  
vfs.cache.numnegzaps: 363  
vfs.cache.numneghits: 5461  
vfs.cache.numupgrades: 0  
vfs.cache.numfullpathcalls: 9  
vfs.cache.numfullpathfail1: 0  
vfs.cache.numfullpathfail2: 0  
vfs.cache.numfullpathfail4: 0  
vfs.cache.numfullpathfound: 9  
vfs.write\_behind: 1  
vfs.read\_max: 64  
vfs.read\_min: 1  
vfs.typenumhash: 1  
vfs.lookup\_shared: 1  
vfs.usermount: 0  
vfs.numvnodes: 1184  
vfs.wantfreenodes: 53338  
vfs.freevnodes: 32  
vfs.vlru\_allow\_cache\_src: 0  
vfs.reassignbufcalls: 1046  
vfs.timestamp\_precision: 0  
vfs.worklist\_len: 352  
vfs.ffs.doasyncfree: 1  
vfs.ffs.dorealloclbks: 1  
vfs.ffs.compute\_summary\_at\_mount: 0  
net.local.stream.sendspace: 8192  
net.local.stream.recvspace: 8192  
net.local.dgram.maxdgram: 2048  
net.local.dgram.recvspace: 4096  
net.local.segpacket.maxsegpacket: 8192  
net.local.segpacket.recvspace: 8192  
net.local.inflight: 0  
net.local.deferred: 0  
net.local.recycled: 0  
net.local.taskcount: 0  
net.inet.ip.portrange.lowfirst: 1023  
net.inet.ip.portrange.lowlast: 600  
net.inet.ip.portrange.first: 10000  
net.inet.ip.portrange.last: 65535  
net.inet.ip.portrange.hifirst: 49152  
net.inet.ip.portrange.hilast: 65535  
net.inet.ip.portrange.reservedhigh: 1023  
net.inet.ip.portrange.reservedlow: 0  
net.inet.ip.portrange.randomized: 1  
net.inet.ip.portrange.randomcps: 10  
net.inet.ip.portrange.randomtime: 45  
net.inet.ip.forwarding: 0  
net.inet.ip.redirect: 1  
net.inet.ip.ttl: 64  
net.inet.ip.rtxpire: 3600  
net.inet.ip.rtmminexpire: 10  
net.inet.ip.rtmmaxcache: 128  
net.inet.ip.sourceroute: 0  
net.inet.ip.intr\_queue\_maxlen: 256  
net.inet.ip.intr\_queue\_drops: 0  
net.inet.ip.accept\_sourceroute: 0  
net.inet.ip.keepfaith: 0  
net.inet.ip.gifttl: 30  
net.inet.ip.no\_same\_prefix: 0  
net.inet.ip.random\_id\_period: 8192  
net.inet.ip.random\_id\_collisions: 0  
net.inet.ip.random\_id\_total: 0  
net.inet.ip.mcast.maxgrpsrc: 512  
net.inet.ip.mcast.maxsocksrc: 128  
net.inet.ip.mcast.loop: 1  
net.inet.ip.fastforwarding: 0  
net.inet.ip.sendsourcequench: 0  
net.inet.ip.random\_id: 0  
net.inet.ip.check\_interface: 0  
net.inet.ip.fragpackets: 0  
net.inet.ip.maxfragsperpacket: 16  
net.inet.ip.maxfragpackets: 15766  
net.inet.ip.process\_options: 1  
net.inet.icmp.maskrepl: 0  
net.inet.icmp.icmplim: 200  
net.inet.icmp.icmplim\_output: 1  
net.inet.icmp.maskfake: 0  
net.inet.icmp.log\_redirect: 0  
net.inet.icmp.reply\_src:  
net.inet.icmp.reply\_from\_interface: 0  
net.inet.icmp.quotelen: 8  
net.inet.icmp.bmcastecho: 0  
net.inet.icmp.drop\_redirect: 0  
net.inet.igmp.recvifkludge: 1

net.inet.igmp.sendra: 1  
net.inet.igmp.sendlocal: 1  
net.inet.igmp.v1enable: 1  
net.inet.igmp.v2enable: 1  
net.inet.igmp.legacysupp: 0  
net.inet.igmp.default\_version: 3  
net.inet.igmp.gsrdelay: 10  
net.inet.tcp.rfc1323: 1  
net.inet.tcp.mssdflt: 536  
net.inet.tcp.keepidle: 7200000  
net.inet.tcp.keepintvl: 75000  
net.inet.tcp.sendspace: 32768  
net.inet.tcp.recvspace: 65536  
net.inet.tcp.keepinit: 75000  
net.inet.tcp.delacktime: 100  
net.inet.tcp.v6mssdflt: 1220  
net.inet.tcp.cc.algorithm: newreno  
net.inet.tcp.cc.available: newreno  
net.inet.tcp.hostcache.cachelimit: 15360  
net.inet.tcp.hostcache.hashsize: 512  
net.inet.tcp.hostcache.bucketlimit: 30  
net.inet.tcp.hostcache.count: 0  
net.inet.tcp.hostcache.expire: 3600  
net.inet.tcp.hostcache.prune: 300  
net.inet.tcp.hostcache.purge: 0  
net.inet.tcp.log\_in\_vain: 0  
net.inet.tcp.blackhole: 0  
net.inet.tcp.delayed\_ack: 1  
net.inet.tcp.drop\_synfin: 0  
net.inet.tcp.rfc3042: 1  
net.inet.tcp.rfc3390: 1  
net.inet.tcp.experimental.initscwnd10: 1  
net.inet.tcp.rfc3465: 1  
net.inet.tcp.abc\_l\_var: 2  
net.inet.tcp.ecn.enable: 0  
net.inet.tcp.ecn.maxretries: 1  
net.inet.tcp.insecure\_rst: 0  
net.inet.tcp.recvbuf\_auto: 1  
net.inet.tcp.recvbuf\_inc: 16384  
net.inet.tcp.recvbuf\_max: 2097152  
net.inet.tcp.path\_mtu\_discovery: 1  
net.inet.tcp.tso: 1  
net.inet.tcp.sendbuf\_auto: 1  
net.inet.tcp.sendbuf\_inc: 8192  
net.inet.tcp.sendbuf\_max: 2097152  
net.inet.tcp.reass.maxsegments: 31600  
net.inet.tcp.reass.cursegments: 0  
net.inet.tcp.reass.overflow: 0  
net.inet.tcp.sack.enable: 1  
net.inet.tcp.sack.maxholes: 128  
net.inet.tcp.sack.globalmaxholes: 65536  
net.inet.tcp.sack.globalholes: 0  
net.inet.tcp.minmss: 216  
net.inet.tcp.log\_debug: 0  
net.inet.tcp.tcbhashsize: 65536  
net.inet.tcp.do\_tcpdrain: 1  
net.inet.tcp.pcbcount: 3  
net.inet.tcp.icmp\_may\_rst: 1  
net.inet.tcp.isn\_reseed\_interval: 0  
net.inet.tcp.soreceive\_stream: 0  
net.inet.tcp.syncookies: 1  
net.inet.tcp.syncookies\_only: 0  
net.inet.tcp.syncache.bucketlimit: 30  
net.inet.tcp.syncache.cachelimit: 15375  
net.inet.tcp.syncache.count: 0  
net.inet.tcp.syncache.hashsize: 512  
net.inet.tcp.syncache.rexmtlimit: 3  
net.inet.tcp.syncache.rst\_on\_sock\_fail: 1  
net.inet.tcp.msl: 30000  
net.inet.tcp.rexmit\_min: 30  
net.inet.tcp.rexmit\_slop: 200  
net.inet.tcp.always\_keepalive: 1  
net.inet.tcp.fast\_finwait2\_recycle: 0  
net.inet.tcp.finwait2\_timeout: 60000  
net.inet.tcp.keeppcnt: 8  
net.inet.tcp.rexmit\_drop\_options: 0  
net.inet.tcp.per\_cpu\_timers: 0  
net.inet.tcp.timer\_race: 0  
net.inet.tcp.maxtcpw: 27767  
net.inet.tcp.nolocaltimewait: 0  
net.inet.udp.checksum: 1  
net.inet.udp.maxdgram: 9216  
net.inet.udp.recvspace: 42080  
net.inet.udp.log\_in\_vain: 0  
net.inet.udp.blackhole: 0  
net.inet.sctp.sendspace: 1864135  
net.inet.sctp.recvspace: 1864135  
net.inet.sctp.auto\_asconf: 1

```
net.inet.sctp.ecn_enable: 1
net.inet.sctp.pr_enable: 1
net.inet.sctp.auth_disable: 0
net.inet.sctp.asconf_enable: 1
net.inet.sctp.reconfig_enable: 1
net.inet.sctp.nr_sack_on_off: 0
net.inet.sctp.pktdrop_enable: 0
net.inet.sctp.strict_sacks: 1
net.inet.sctp.peer_chkoh: 256
net.inet.sctp.maxburst: 4
net.inet.sctp.fr_maxburst: 4
net.inet.sctp.maxchunks: 63066
net.inet.sctp.tcbhashsize: 1024
net.inet.sctp.pcbhashsize: 256
net.inet.sctp.min_split_point: 2904
net.inet.sctp.chunkscale: 10
net.inet.sctp.delayed_sack_time: 200
net.inet.sctp.sack_freq: 2
net.inet.sctp.sys_resource: 1000
net.inet.sctp.asoc_resource: 10
net.inet.sctp.heartbeat_interval: 30000
net.inet.sctp.pmtu_raise_time: 600
net.inet.sctp.shutdown_guard_time: 180
net.inet.sctp.secret_lifetime: 3600
net.inet.sctp.rto_max: 60000
net.inet.sctp.rto_min: 1000
net.inet.sctp.rto_initial: 3000
net.inet.sctp.init_rto_max: 60000
net.inet.sctp.valid_cookie_life: 60000
net.inet.sctp.init_rtx_max: 8
net.inet.sctp.assoc_rtx_max: 10
net.inet.sctp.path_rtx_max: 5
net.inet.sctp.path_pf_threshold: 65535
net.inet.sctp.add_more_on_output: 1452
net.inet.sctp.incoming_streams: 2048
net.inet.sctp.outgoing_streams: 10
net.inet.sctp.cmt_on_off: 0
net.inet.sctp.cmt_use_dac: 0
net.inet.sctp.cwnd_maxburst: 1
net.inet.sctp.nat_friendly: 1
net.inet.sctp.abc_l_var: 2
net.inet.sctp.max_chained_mbufs: 5
net.inet.sctp.do_sctp_drain: 1
net.inet.sctp.hb_max_burst: 4
net.inet.sctp.abort_at_limit: 0
net.inet.sctp.strict_data_order: 0
net.inet.sctp.min_residual: 1452
net.inet.sctp.max_retran_chunk: 30
net.inet.sctp.log_level: 0
net.inet.sctp.default_cc_module: 0
net.inet.sctp.default_ss_module: 0
net.inet.sctp.default_frag_interleave: 1
net.inet.sctp.mobility_base: 0
net.inet.sctp.mobility_fasthandoff: 0
net.inet.sctp.udp_tunneling_port: 0
net.inet.sctp.enable_sack_immediately: 0
net.inet.sctp.nat_friendly_init: 0
net.inet.sctp.vtag_time_wait: 60
net.inet.sctp.buffer_splitting: 0
net.inet.sctp.initial_cwnd: 3
net.inet.sctp.rttvar_bw: 4
net.inet.sctp.rttvar_rtt: 5
net.inet.sctp.rttvar_eqret: 0
net.inet.sctp.rttvar_steady_step: 20
net.inet.sctp.use_dccecn: 1
net.inet.sctp.blackhole: 0
net.inet.sctp.diag_info_code: 0
net.inet.raw.maxdgram: 9216
net.inet.raw.recvspace: 9216
net.inet.accf.unloadable: 0
net.link.generic.system.ifcount: 3
net.link.ether.inet.max_age: 1200
net.link.ether.inet.maxtries: 5
net.link.ether.inet.useloopback: 1
net.link.ether.inet.proxyall: 0
net.link.ether.inet.wait: 20
net.link.ether.inet.maxhold: 1
net.link.ether.inet.log_arp_wrong_iface: 1
net.link.ether.inet.log_arp_movements: 1
net.link.ether.inet.log_arp_permanent_modify: 1
net.link.ether.inet.allow_multicast: 0
net.link.ether.inet.max_log_per_second: 1
net.link.vlan.soft_pad: 0
net.link.gif.max_nesting: 1
net.link.gif.parallel_tunnels: 0
net.link.ifqmaxlen: 50
net.link.log_link_state_change: 1
net.link.tun.devfs_cloning: 1
```

```
net.inet6.ip6.forwarding: 0
net.inet6.ip6.redirect: 1
net.inet6.ip6.hlim: 64
net.inet6.ip6.maxfragpackets: 126132
net.inet6.ip6.accept_rtadv: 0
net.inet6.ip6.keepfaith: 0
net.inet6.ip6.log_interval: 5
net.inet6.ip6.hdrnestlimit: 15
net.inet6.ip6.dad_count: 1
net.inet6.ip6.auto_flowlabel: 1
net.inet6.ip6.defmcasthlim: 1
net.inet6.ip6.gifhlim: 30
net.inet6.ip6.kame_version: FreeBSD
net.inet6.ip6.use_deprecated: 1
net.inet6.ip6.rr_prune: 5
net.inet6.ip6.v6only: 1
net.inet6.ip6.rtmmaxcache: 128
net.inet6.ip6.use_tempaddr: 0
net.inet6.ip6.templtime: 86400
net.inet6.ip6.tempvtime: 604800
net.inet6.ip6.auto_linklocal: 1
net.inet6.ip6.prefer_tempaddr: 0
net.inet6.ip6.use_defaultzone: 0
net.inet6.ip6.maxfrags: 126132
net.inet6.ip6.mcast_pmtu: 0
net.inet6.ip6.no_radr: 0
net.inet6.ip6.norbit_raif: 0
net.inet6.ip6.rfc6204w3: 0
net.inet6.ip6.mcast.maxgrpsrc: 512
net.inet6.ip6.mcast.maxsocksrc: 128
net.inet6.ip6.mcast.loop: 1
net.inet6.ip6.deembed_scopeid: 1
net.inet6.icmp6.rediraccept: 1
net.inet6.icmp6.redirtimeout: 600
net.inet6.icmp6.nd6_prune: 1
net.inet6.icmp6.nd6_delay: 5
net.inet6.icmp6.nd6_umaxtries: 3
net.inet6.icmp6.nd6_mmaxtries: 3
net.inet6.icmp6.nd6_useloopback: 1
net.inet6.icmp6.nodeinfo: 3
net.inet6.icmp6.errppslimit: 100
net.inet6.icmp6.nd6_maxnudhint: 0
net.inet6.icmp6.nd6_debug: 0
net.inet6.icmp6.nd6_maxqueuelen: 1
net.inet6.icmp6.nodeinfo_oldmcprefix: 1
net.inet6.icmp6.nd6_onlink_ns_rfc4861: 0
net.inet6.icmp6.nd6_gctimer: 86400
net.inet6.mld.gsrdelay: 10
net.inet6.mld.v1enable: 1
net.inet6.mld.use_allow: 1
net.bpf.maxinsns: 512
net.bpf.zerocopy_enable: 0
net.bpf.optimize_writers: 0
net.bpf.bufsize: 4096
net.bpf.maxbufsize: 524288
net.ifdescr_maxlen: 1024
net.isr.dispatch: direct
net.isr.maxthreads: 1
net.isr.bindthreads: 0
net.isr.maxqlimit: 10240
net.isr.defaultqlimit: 256
net.isr.maxprot: 16
net.isr.numthreads: 1
net.raw.sendspace: 8192
net.raw.recvspace: 8192
net.fibs: 1
net.add_addr_allfibs: 1
net.my_fibnum: 0
net.route.netisr_maxqlen: 256
net.wlan.nol_timeout: 1800
net.wlan.cac_timeout: 60
net.wlan.debug: 0
net.wlan.ampdu_age: 500
net.wlan.recv_bar: 1
net.wlan.addba_timeout: 250
net.wlan.addba_backoff: 10000
net.wlan.addba_maxtries: 3
net.wlan.hwmp.targetonly: 0
net.wlan.hwmp.pathlifetime: 5000
net.wlan.hwmp.maxpreq_retries: 3
net.wlan.hwmp.net_diameter_traversal_time: 512
net.wlan.hwmp.roottimeout: 5000
net.wlan.hwmp.rootint: 2000
net.wlan.hwmp.rannint: 1000
net.wlan.hwmp.rootconfint: 2000
net.wlan.hwmp.inact: 5000
net.wlan.mesh.gateint: 10000
net.wlan.mesh.retrytimeout: 40
```



net.wlan.mesh.holdingtimeout: 40  
net.wlan.mesh.confirmttimeout: 40  
net.wlan.mesh.backofffttimeout: 5000  
net.wlan.mesh.maxretries: 2  
net.wlan.mesh.maxholding: 2  
debug.acpi.max\_tasks: 256  
debug.acpi.max\_threads: 3  
debug.acpi.acpi\_ca\_version: 20130823  
debug.acpi.enable\_debug\_objects: 0  
debug.acpi.interpreter\_slack: 1  
debug.acpi.reset\_clock: 1  
debug.acpi.suspend\_bounce: 0  
debug.acpi.cpu\_unordered: 0  
debug.acpi.ec.burst: 0  
debug.acpi.ec.polled: 0  
debug.acpi.ec.timeout: 750  
debug.acpi.batt.batt\_sleep\_ms: 0  
debug.acpi.resume\_beep: 0  
debug.ipw: 0  
debug.iwi: 0  
debug.mddebug: 0  
debug.wpi: 0  
debug.elf64\_legacy\_coredump: 0  
debug.elf32\_legacy\_coredump: 0  
debug.boothowto: 0  
debug.bootverbose: 0  
debug.cpubfreq.lowest: 0  
debug.cpubfreq.verbose: 0  
debug.fail\_point.sysctl\_running: off  
debug.fail\_point.buf\_pressure: off  
debug.fail\_point.nlm\_deny\_grant: off  
debug.sizeof.cdev: 288  
debug.sizeof.cdev\_priv: 376  
debug.sizeof.g\_class: 176  
debug.sizeof.g\_geom: 176  
debug.sizeof.g\_provider: 136  
debug.sizeof.g\_consumer: 96  
debug.sizeof.g\_bioq: 56  
debug.sizeof.vnode: 472  
debug.sizeof.proc: 1216  
debug.sizeof.bio: 248  
debug.sizeof.buf: 600  
debug.sizeof.kinfo\_proc: 1088  
debug.sizeof.devstat: 288  
debug.sizeof.namecache: 72  
debug.adaptive\_machine\_arch: 1  
debug.osd: 0  
debug.rwlock.retry: 10  
debug.rwlock.loops: 10000  
debug.debugger\_on\_panic: 1  
debug.trace\_on\_panic: 1  
debug.ncores: 5  
debug.sx.retries: 10  
debug.sx.loops: 10000  
debug.umtx.umtx\_pi\_allocated: 0  
debug.clocktime: 0  
debug.kdb.available:  
debug.kdb.current:  
debug.kdb.enter: 0  
debug.kdb.panic: 0  
debug.kdb.trap: 0  
debug.kdb.trap\_code: 0  
debug.kdb.break\_to\_debugger: 0  
debug.kdb.alt\_break\_to\_debugger: 0  
debug.rman\_debug: 0  
debug.iosize\_max\_clamp: 1  
debug.devfs\_iosize\_max\_clamp: 1  
debug.nchash: 262143  
debug.numneg: 42  
debug.numcache: 877  
debug.numcachehv: 97  
debug.vfscache: 1  
debug.disablecwd: 0  
debug.disablefullpath: 0  
debug.rush\_requests: 0  
debug.vnlru\_nowhere: 0  
debug.vn\_io\_fault\_enable: 1  
debug.vn\_io\_faults: 443  
debug.if\_tun\_debug: 0  
debug.nlm\_debug: 0  
debug.fsckcmds: 0  
debug.dopersistence: 0  
debug.snapdebug: 0  
debug.collectsnapstats: 0  
debug.softdep.total.pagedep: 70  
debug.softdep.total.inodedep: 431  
debug.softdep.total.bmsafemap: 418  
debug.softdep.total.newblk: 783

debug.softdep.total.allocdirect: 763  
debug.softdep.total.indirdep: 2  
debug.softdep.total.allocindir: 20  
debug.softdep.total.freefrag: 2  
debug.softdep.total.freeblks: 311  
debug.softdep.total.freefile: 25  
debug.softdep.total.diradd: 431  
debug.softdep.total.mkdir: 114  
debug.softdep.total.dirrem: 43  
debug.softdep.total.newdirblk: 57  
debug.softdep.total.freework: 311  
debug.softdep.total.freedep: 0  
debug.softdep.total.jaddrf: 545  
debug.softdep.total.jremref: 55  
debug.softdep.total.jmvref: 0  
debug.softdep.total.jnewblk: 783  
debug.softdep.total.jfreeblk: 0  
debug.softdep.total.jfreefrag: 2  
debug.softdep.total.jseg: 13  
debug.softdep.total.jsegdep: 1385  
debug.softdep.total.sbdep: 4  
debug.softdep.total.jtrunc: 0  
debug.softdep.total.jfsync: 0  
debug.softdep.highuse.pagedep: 62  
debug.softdep.highuse.inodedep: 387  
debug.softdep.highuse.bmsafemap: 5  
debug.softdep.highuse.newblk: 1  
debug.softdep.highuse.allocdirect: 419  
debug.softdep.highuse.indirdep: 2  
debug.softdep.highuse.allocindir: 20  
debug.softdep.highuse.freefrag: 1  
debug.softdep.highuse.freeblks: 5  
debug.softdep.highuse.freefile: 3  
debug.softdep.highuse.diradd: 367  
debug.softdep.highuse.mkdir: 94  
debug.softdep.highuse.dirrem: 4  
debug.softdep.highuse.newdirblk: 51  
debug.softdep.highuse.freework: 5  
debug.softdep.highuse.freedep: 0  
debug.softdep.highuse.jaddrf: 384  
debug.softdep.highuse.jremref: 3  
debug.softdep.highuse.jmvref: 0  
debug.softdep.highuse.jnewblk: 359  
debug.softdep.highuse.jfreeblk: 0  
debug.softdep.highuse.jfreefrag: 1  
debug.softdep.highuse.jseg: 13  
debug.softdep.highuse.jsegdep: 834  
debug.softdep.highuse.sbdep: 1  
debug.softdep.highuse.jtrunc: 0  
debug.softdep.highuse.jfsync: 0  
debug.softdep.current.pagedep: 62  
debug.softdep.current.inodedep: 387  
debug.softdep.current.bmsafemap: 3  
debug.softdep.current.newblk: 0  
debug.softdep.current.allocdirect: 418  
debug.softdep.current.indirdep: 2  
debug.softdep.current.allocindir: 20  
debug.softdep.current.freefrag: 1  
debug.softdep.current.freeblks: 3  
debug.softdep.current.freefile: 0  
debug.softdep.current.diradd: 367  
debug.softdep.current.mkdir: 94  
debug.softdep.current.dirrem: 1  
debug.softdep.current.newdirblk: 51  
debug.softdep.current.freework: 3  
debug.softdep.current.freedep: 0  
debug.softdep.current.jaddrf: 1  
debug.softdep.current.jremref: 0  
debug.softdep.current.jmvref: 0  
debug.softdep.current.jnewblk: 6  
debug.softdep.current.jfreeblk: 0  
debug.softdep.current.jfreefrag: 0  
debug.softdep.current.jseg: 13  
debug.softdep.current.jsegdep: 807  
debug.softdep.current.sbdep: 0  
debug.softdep.current.jtrunc: 0  
debug.softdep.current.jfsync: 0  
debug.softdep.write.pagedep: 3  
debug.softdep.write.inodedep: 152  
debug.softdep.write.bmsafemap: 7  
debug.softdep.write.newblk: 0  
debug.softdep.write.allocdirect: 78  
debug.softdep.write.indirdep: 0  
debug.softdep.write.allocindir: 16  
debug.softdep.write.freefrag: 0  
debug.softdep.write.freeblks: 4  
debug.softdep.write.freefile: 0  
debug.softdep.write.diradd: 0

debug.softdep.write.mkdir: 0  
debug.softdep.write.dirrem: 0  
debug.softdep.write.newdirblk: 0  
debug.softdep.write.freework: 0  
debug.softdep.write.freedep: 0  
debug.softdep.write.jaddrf: 0  
debug.softdep.write.jremref: 0  
debug.softdep.write.jmvref: 0  
debug.softdep.write.jnewblk: 0  
debug.softdep.write.jfreeblk: 0  
debug.softdep.write.jfreefrag: 0  
debug.softdep.write.jseg: 13  
debug.softdep.write.jsegdep: 1  
debug.softdep.write.sbdep: 4  
debug.softdep.write.jtrunc: 0  
debug.softdep.write.jfsync: 0  
debug.softdep.max\_softdeps: 853408  
debug.softdep.tickdelay: 2  
debug.softdep.flush\_threads: 1  
debug.softdep.worklist\_push: 0  
debug.softdep.blk\_limit\_push: 0  
debug.softdep.ino\_limit\_push: 0  
debug.softdep.blk\_limit\_hit: 0  
debug.softdep.ino\_limit\_hit: 0  
debug.softdep.sync\_limit\_hit: 0  
debug.softdep.indir\_blk\_ptrs: 0  
debug.softdep.inode\_bitmap: 5  
debug.softdep.direct\_blk\_ptrs: 5  
debug.softdep.dir\_entry: 1  
debug.softdep.jaddrf\_rollback: 0  
debug.softdep.jnewblk\_rollback: 0  
debug.softdep.journal\_low: 0  
debug.softdep.journal\_min: 0  
debug.softdep.journal\_wait: 2  
debug.softdep.jwait\_filepage: 0  
debug.softdep.jwait\_freeblks: 0  
debug.softdep.jwait\_inode: 2  
debug.softdep.jwait\_newblk: 0  
debug.softdep.cleanup\_blkrequests: 0  
debug.softdep.cleanup\_inorequests: 0  
debug.softdep.cleanup\_high\_delay: 0  
debug.softdep.cleanup\_retries: 0  
debug.softdep.cleanup\_failures: 0  
debug.softdep.flushcache: 0  
debug.softdep.emptyjblocks: 0  
debug.softdep.print\_threads: 0  
debug.bigcgs: 0  
debug.dobkgrdwrite: 1  
debug.dircheck: 0  
debug.psm.loglevel: 0  
debug.psm.hz: 20  
debug.psm.errsecs: 2  
debug.psm.errusecs: 0  
debug.psm.secs: 0  
debug.psm.usecs: 500000  
debug.psm.pkterrthresh: 2  
debug.vesa.shadow\_rom: 0  
debug.fdc.fifo: 8  
debug.fdc.debugflags: 0  
debug.fdc.retries: 10  
debug.fdc.spec1: 175  
debug.fdc.spec2: 16  
debug.fdc.settle: 0  
debug.x86bios.call: 0  
debug.x86bios.int: 0  
debug.hwpstate\_verbose: 0  
debug.minidump: 1  
hw.machine: amd64  
hw.model: Intel(R) Pentium(R) CPU G3240 @ 3.10GHz  
hw.ncpu: 2  
hw.byteorder: 1234  
hw.physmem: 8505696256  
hw.usermem: 8392404992  
hw.pagesize: 4096  
hw.floatingpoint: 1  
hw.machine\_arch: amd64  
hw.realmem: 8589934592  
hw.aac.enable\_msi: 1  
hw.amr.force\_sg32: 0  
hw.an.an\_dump: off  
hw.an.an\_cache\_mode: dbm  
hw.an.an\_cache\_mcastonly: 0  
hw.an.an\_cache\_iponly: 1  
hw.ata.ata\_dma\_check\_80pin: 1  
hw.ath.longcal: 30  
hw.ath.shortcal: 100  
hw.ath.resetcal: 1200  
hw.ath.anical: 100

hw.ath.rxbuf: 512  
hw.ath.txbuf: 512  
hw.ath.txbuf\_mgmt: 32  
hw.ath.bstuck: 4  
hw.bce.verbose: 1  
hw.bce.tso\_enable: 1  
hw.bce.msi\_enable: 1  
hw.bce.rx\_pages: 2  
hw.bce.tx\_pages: 2  
hw.bce.hdr\_split: 1  
hw.bce.strict\_rx\_mtu: 0  
hw.bce.tx\_quick\_cons\_trip\_int: 20  
hw.bce.tx\_quick\_cons\_trip: 20  
hw.bce.tx\_ticks\_int: 80  
hw.bce.tx\_ticks: 80  
hw.bce.rx\_quick\_cons\_trip\_int: 6  
hw.bce.rx\_quick\_cons\_trip: 6  
hw.bce.rx\_ticks\_int: 18  
hw.bce.rx\_ticks: 18  
hw.bge.allow\_asf: 1  
hw.cardbus.debug: 0  
hw.cardbus.cis\_debug: 0  
hw.cs.ignore\_checksum\_failure: 0  
hw.cs.recv\_delay: 570  
hw.em.tx\_int\_delay: 66  
hw.em.rx\_int\_delay: 0  
hw.em.tx\_abs\_int\_delay: 66  
hw.em.rx\_abs\_int\_delay: 66  
hw.em.rxd: 1024  
hw.em.txd: 1024  
hw.em.smart\_pwr\_down: 0  
hw.em.sbp: 0  
hw.em.enable\_msix: 1  
hw.em.rx\_process\_limit: 100  
hw.em.eee\_setting: 1  
hw.igb.rxd: 1024  
hw.igb.txd: 1024  
hw.igb.enable\_aim: 1  
hw.igb.enable\_msix: 1  
hw.igb.max\_interrupt\_rate: 8000  
hw.igb.buf\_ring\_size: 4096  
hw.igb.header\_split: 0  
hw.igb.num\_queues: 0  
hw.igb.rx\_process\_limit: 100  
hw.ix.enable\_aim: 1  
hw.ix.max\_interrupt\_rate: 31250  
hw.ix.rx\_process\_limit: 256  
hw.ix.tx\_process\_limit: 256  
hw.ix.enable\_msix: 1  
hw.ix.num\_queues: 0  
hw.ix.txd: 2048  
hw.ix.rxd: 2048  
hw.ixl.enable\_msix: 1  
hw.ixl.ring\_size: 1024  
hw.ixl.max\_queues: 0  
hw.ixl.dynamic\_rx\_itr: 0  
hw.ixl.dynamic\_tx\_itr: 0  
hw.ixl.rx\_itr: 62  
hw.ixl.tx\_itr: 122  
hw.ixlv.ring\_size: 1024  
hw.ixlv.max\_queues: 0  
hw.ixlv.txbr\_size: 16777216  
hw.ixlv.dynamic\_rx\_itr: 0  
hw.ixlv.dynamic\_tx\_itr: 0  
hw.ixlv.rx\_itr: 62  
hw.ixlv.tx\_itr: 122  
hw.malo.txcoalesce: 8  
hw.malo.rxbuf: 256  
hw.malo.rxquota: 256  
hw.malo.txbuf: 256  
hw.malo.pci.msi\_disable: 0  
hw.mfi.event\_locale: 65535  
hw.mfi.event\_class: 0  
hw.mfi.max\_cmds: 128  
hw.mfi.detect\_jbod\_change: 1  
hw.mfi.polled\_cmd\_timeout: 60  
hw.mfi.cmd\_timeout: 30  
hw.mfi.msi: 1  
hw.mfi.mrsas\_enable: 0  
hw.mmc.debug: 0  
hw.mwl.rxdesc: 256  
hw.mwl.rxbuf: 640  
hw.mwl.txbuf: 256  
hw.mwl.txcoalesce: 8  
hw.mwl.rxquota: 640  
hw.mwl.rxdm\_low: 3  
hw.pccard.debug: 0  
hw.pccard.cis\_debug: 0

hw.cbb.start\_memory: 2281701376  
hw.cbb.start\_16\_io: 256  
hw.cbb.start\_32\_io: 4096  
hw.cbb.debug: 0  
hw.pci.intr\_mask: 57016  
hw.pci.pd6722\_vsense: 1  
hw.pci.enable\_io\_modes: 1  
hw.pci.reallocBars: 0  
hw.pci.do\_power\_nodriver: 0  
hw.pci.do\_power\_resume: 1  
hw.pci.do\_power\_suspend: 1  
hw.pci.enable\_msi: 1  
hw.pci.enable\_msix: 1  
hw.pci.honor\_msi\_blacklist: 1  
hw.pci.usb\_early\_takeover: 1  
hw.pci.clearBars: 0  
hw.pci.clear\_pcib: 0  
hw.pci.default\_vgapci\_unit: 0  
hw.pci.mcfg: 1  
hw.pci.host\_mem\_start: 2147483648  
hw.sdhci.debug: 0  
hw.sdhci.enable\_msi: 1  
hw.snd.report\_soft\_formats: 1  
hw.snd.report\_soft\_matrix: 1  
hw.snd.latency: 5  
hw.snd.latency\_profile: 1  
hw.snd.vpc\_autoreset: 1  
hw.snd.vpc\_0db: 45  
hw.snd.vpc\_reset: 0  
hw.snd.compat\_linux\_mmap: 0  
hw.snd.feeder\_eq\_presets: PEQ:16000,0.2500,62,0.2500:-9,9,1.0:44100,48000,88200,96000,176400,192000  
hw.snd.feeder\_eq\_exact\_rate: 0  
hw.snd.feeder\_rate\_presets: 100:8:0.85 100:36:0.92 100:164:0.97  
hw.snd.feeder\_rate\_polyphase\_max: 183040  
hw.snd.feeder\_rate\_min: 1  
hw.snd.feeder\_rate\_max: 2016000  
hw.snd.feeder\_rate\_round: 25  
hw.snd.feeder\_rate\_quality: 1  
hw.snd.vpc\_mixer\_bypass: 1  
hw.snd.verbose: 0  
hw.snd.default\_auto: -1  
hw.snd.version: 2009061500/amd64  
hw.snd.default\_unit: -1  
hw.snd.maxautovchans: 16  
hw.midi.stat.verbose: 0  
hw.midi.debug: 0  
hw.midi.dumpraw: 0  
hw.midi.instrhoff: 0  
hw.midi.seq.debug: 0  
hw.syscons.saver.keyonly: 1  
hw.syscons.bell: 1  
hw.syscons.kbd\_reboot: 1  
hw.syscons.kbd\_debug: 1  
hw.syscons.sc\_no\_suspend\_vtswitch: 0  
hw.broken\_txfifo: 0  
hw.usb.ehci.debug: 0  
hw.usb.ehci.no\_hs: 0  
hw.usb.ehci.iaadbug: 0  
hw.usb.ehci.lostintrbug: 0  
hw.usb.ohci.debug: 0  
hw.usb.uhci.debug: 0  
hw.usb.uhci.loop: 0  
hw.usb.xhci.streams: 0  
hw.usb.xhci.debug: 0  
hw.usb.xhci.xhci\_port\_route: 0  
hw.usb.xhci.use\_polling: 0  
hw.usb.ctrl.debug: 0  
hw.usb.no\_boot\_wait: 0  
hw.usb.no\_suspend\_wait: 0  
hw.usb.no\_shutdown\_wait: 0  
hw.usb.umass.debug: 0  
hw.usb.umass.throttle: 0  
hw.usb.debug: 0  
hw.usb.timings.port\_reset\_delay: 50  
hw.usb.timings.port\_root\_reset\_delay: 250  
hw.usb.timings.port\_reset\_recovery: 250  
hw.usb.timings.port\_powerup\_delay: 300  
hw.usb.timings.port\_resume\_delay: 40  
hw.usb.timings.set\_address\_settle: 10  
hw.usb.timings.resume\_delay: 250  
hw.usb.timings.resume\_wait: 50  
hw.usb.timings.resume\_recovery: 50  
hw.usb.timings.extra\_power\_up\_time: 20  
hw.usb.dev.debug: 0  
hw.usb.template: 0  
hw.usb.usb\_lang\_id: 9  
hw.usb.usb\_lang\_mask: 255  
hw.usb.ugen.debug: 0

hw.usb.uhub.debug: 0  
hw.usb.power\_timeout: 30  
hw.usb.proc.debug: 0  
hw.usb.no\_cs\_fail: 0  
hw.usb.full\_ddesc: 0  
hw.usb.ukbd.debug: 0  
hw.usb.ukbd.no\_leds: 0  
hw.usb.ukbd.pollrate: 0  
hw.usb.ums.debug: 0  
hw.watchdog.wd\_last\_u: 0  
hw.watchdog.wd\_last\_u\_secs: 0  
hw.wi.txerate: 0  
hw.wi.debug: 0  
hw.xe.debug: 0  
hw.intr\_storm\_threshold: 1000  
hw.availpages: 2076586  
hw.pagesizes: 4096 2097152 0  
hw.bus.devctl\_disable: 0  
hw.bus.devctl\_queue: 1000  
hw.clockrate: 3092  
hw.instruction\_sse: 1  
hw.via\_feature\_rng: 0  
hw.via\_feature\_xcrypt: 0  
hw.psm.tap\_enabled: -1  
hw.psm.tap\_threshold: 25  
hw.psm.tap\_timeout: 125000  
hw.bxe.debug: 0  
hw.bxe.interrupt\_mode: 2  
hw.bxe.queue\_count: 4  
hw.bxe.max\_rx\_bufs: 4  
hw.bxe.hc\_rx\_ticks: 25  
hw.bxe.hc\_tx\_ticks: 50  
hw.bxe.rx\_budget: -1  
hw.bxe.max\_aggregation\_size: 0  
hw.bxe.mrrs: -1  
hw.bxe.autogreen: 0  
hw.bxe.udp\_rss: 0  
hw.kbd.keymap\_restrict\_change: 0  
hw.dmar.tbl\_pagecnt: 0  
hw.dmar.match\_verbose: 0  
hw.bsdma.total\_bpages: 886  
hw.bsdma.zone0.total\_bpages: 886  
hw.bsdma.zone0.free\_bpages: 886  
hw.bsdma.zone0.reserved\_bpages: 0  
hw.bsdma.zone0.active\_bpages: 0  
hw.bsdma.zone0.total\_bounced: 0  
hw.bsdma.zone0.total\_deferred: 0  
hw.bsdma.zone0.lowaddr: 0xffffffff  
hw.bsdma.zone0.alignment: 4096  
hw.apic.enable\_extint: 0  
hw.mca.enabled: 1  
hw.mca.amd10h\_L1TP: 1  
hw.mca.intel6h\_HSD131: 0  
hw.mca.erratum383: 0  
hw.mca.count: 0  
hw.mca.interval: 3600  
hw.mca.force\_scan: 0  
hw.mca.cmc\_throttle: 60  
hw.acpi.supported\_sleep\_state: S4 S5  
hw.acpi.power\_button\_state: S5  
hw.acpi.sleep\_button\_state: S4  
hw.acpi.lid\_switch\_state: NONE  
hw.acpi.standby\_state: NONE  
hw.acpi.suspend\_state: NONE  
hw.acpi.sleep\_delay: 1  
hw.acpi.s4bios: 0  
hw.acpi.verbose: 0  
hw.acpi.disable\_on\_reboot: 0  
hw.acpi.handle\_reboot: 1  
hw.acpi.reset\_video: 0  
hw.acpi.cpu.cx\_lowest: C1  
machdep.acpi\_timer\_freq: 3579545  
machdep.enable\_panic\_key: 0  
machdep.rtc\_save\_period: 1800  
machdep.adjkerntz: -32400  
machdep.wall\_cmos\_clock: 1  
machdep.disable\_rtc\_set: 0  
machdep.disable\_mrrs: 0  
machdep.idle\_mwait: 1  
machdep.idle\_available: spin, mwait, hlt, acpi  
machdep.idle: acpi  
machdep.bootmethod: BIOS  
machdep.nkpt: 22  
machdep.max\_ldt\_segment: 1024  
machdep.kdb\_on\_nmi: 1  
machdep.panic\_on\_nmi: 1  
machdep.prot\_fault\_translation: 0  
machdep.uprintf\_signal: 0

machdep.acpi\_root: 984208  
machdep.i8254\_freq: 1193182  
machdep.disable\_tsc: 0  
machdep.disable\_tsc\_calibration: 0  
machdep.tsc\_freq: 3092907680  
user.cs\_path:  
user.bc\_base\_max: 0  
user.bc\_dim\_max: 0  
user.bc\_scale\_max: 0  
user.bc\_string\_max: 0  
user.coll\_weights\_max: 0  
user.expr\_nest\_max: 0  
user.line\_max: 0  
user.re\_dup\_max: 0  
user.posix2\_version: 0  
user.posix2\_c\_bind: 0  
user.posix2\_c\_dev: 0  
user.posix2\_char\_term: 0  
user.posix2\_fort\_dev: 0  
user.posix2\_fort\_run: 0  
user.posix2\_localedef: 0  
user.posix2\_sw\_dev: 0  
user.posix2\_upe: 0  
user.stream\_max: 0  
user.tzname\_max: 0  
p1003\_1b.asynchronous\_io: 0  
p1003\_1b.mapped\_files: 200112  
p1003\_1b.memlock: 0  
p1003\_1b.memlock\_range: 0  
p1003\_1b.memory\_protection: 0  
p1003\_1b.message\_passing: 0  
p1003\_1b.prioritized\_io: 0  
p1003\_1b.priority\_scheduling: 200112  
p1003\_1b.realtime\_signals: 200112  
p1003\_1b.semaphores: 0  
p1003\_1b.fsync: 200112  
p1003\_1b.shared\_memory\_objects: 200112  
p1003\_1b.synchronized\_io: 0  
p1003\_1b.timers: 200112  
p1003\_1b.aio\_listio\_max: -1  
p1003\_1b.aio\_max: -1  
p1003\_1b.aio\_prio\_delta\_max: -1  
p1003\_1b.delaytimer\_max: 2147483647  
p1003\_1b.mq\_open\_max: 0  
p1003\_1b.pagesize: 4096  
p1003\_1b.rtsig\_max: 62  
p1003\_1b.sem\_nsems\_max: 0  
p1003\_1b.sem\_value\_max: 0  
p1003\_1b.sigqueue\_max: 128  
p1003\_1b.timer\_max: 32  
compat.ia32.maxdsiz: 536870912  
compat.ia32.maxssiz: 67108864  
compat.ia32.maxvmem: 0  
security.jail.jailed: 0  
security.jail.vnet: 0  
security.jail.jail\_max\_af\_ips: 255  
security.jail.set\_hostname\_allowed: 1  
security.jail.socket\_unixiproute\_only: 1  
security.jail.sysvipc\_allowed: 0  
security.jail.allow\_raw\_sockets: 0  
security.jail.chflags\_allowed: 0  
security.jail.mount\_allowed: 0  
security.jail.mount\_devfs\_allowed: 0  
security.jail.mount\_nullfs\_allowed: 0  
security.jail.mount\_procfs\_allowed: 0  
security.jail.mount\_tmpfs\_allowed: 0  
security.jail.mount\_zfs\_allowed: 0  
security.jail.enforce\_statsfs: 2  
security.jail.devfs\_ruleset: 0  
security.jail.param.jid: 0  
security.jail.param.parent: 0  
security.jail.param.name: 256  
security.jail.param.path: 1024  
security.jail.param.securelevel: 0  
security.jail.param.enforce\_statsfs: 0  
security.jail.param.devfs\_ruleset: 0  
security.jail.param.persist: 0  
security.jail.param.dying: 0  
security.jail.param.children.cur: 0  
security.jail.param.children.max: 0  
security.jail.param.host.: 0  
security.jail.param.host.hostname: 256  
security.jail.param.host.domainname: 256  
security.jail.param.host.hostuid: 64  
security.jail.param.host.hostid: 0  
security.jail.param.cpuset.id: 0  
security.jail.param.ip4.: 0  
security.jail.param.ip4.saddrsel: 0

```

security.jail.param.ip6.: 0
security.jail.param.ip6.saddrsel: 0
security.jail.param.allow.set_hostname: 0
security.jail.param.allow.sysvipc: 0
security.jail.param.allow.raw_sockets: 0
security.jail.param.allow.chflags: 0
security.jail.param.allow.quotas: 0
security.jail.param.allow.socket_af: 0
security.jail.param.allow.mount.: 0
security.jail.param.allow.mount.devfs: 0
security.jail.param.allow.mount.nullfs: 0
security.jail.param.allow.mount.procfs: 0
security.jail.param.allow.mount.tmpfs: 0
security.jail.param.allow.mount.zfs: 0
security.bsd.map_at_zero: 0
security.bsd.suser_enabled: 1
security.bsd.unprivileged_mlock: 1
security.bsd.see_other_uids: 1
security.bsd.see_other_gids: 1
security.bsd.conservative_signals: 1
security.bsd.unprivileged_proc_debug: 1
security.bsd.unprivileged_idprio: 0
security.bsd.unprivileged_read_msgbuf: 1
security.bsd.hardlink_check_uid: 0
security.bsd.hardlink_check_gid: 0
security.bsd.unprivileged_get_quota: 0
security.bsd.stack_guard_page: 0
security.mac.version: 4
security.mac.max_slots: 4
security.mac.labeled: 0
security.mac.mmap_revocation: 1
security.mac.mmap_revocation_via_cow: 0
dev.xen.balloon.current: 0
dev.xen.balloon.target: 0
dev.xen.balloon.driver_pages: 0
dev.xen.balloon.hard_limit: 0
dev.xen.balloon.low_mem: 0
dev.xen.balloon.high_mem: 0
dev.xen.xsd_port: 0
dev.xen.xsd_kva: 0
dev.hv_kvp_log: 0
dev.nexus.%parent:
dev.nexus.0.%desc:
dev.nexus.0.%driver: nexus
dev.nexus.0.%location:
dev.nexus.0.%pnpinfo:
dev.nexus.0.%parent: root0
dev.ram.%parent:
dev.ram.0.%desc: System RAM
dev.ram.0.%driver: ram
dev.ram.0.%location:
dev.ram.0.%pnpinfo:
dev.ram.0.%parent: nexus0
dev.acpi.%parent:
dev.acpi.0.%desc: AMI 06A0
dev.acpi.0.%driver: acpi
dev.acpi.0.%location:
dev.acpi.0.%pnpinfo:
dev.acpi.0.%parent: nexus0
dev.acpi_sysresource.%parent:
dev.acpi_sysresource.0.%desc: System Resource
dev.acpi_sysresource.0.%driver: acpi_sysresource
dev.acpi_sysresource.0.%location: handle=\_SB_.PCI0.TPMX
dev.acpi_sysresource.0.%pnpinfo: _HID=PNP0C01 _UID=1
dev.acpi_sysresource.0.%parent: acpi0
dev.acpi_sysresource.1.%desc: System Resource
dev.acpi_sysresource.1.%driver: acpi_sysresource
dev.acpi_sysresource.1.%location: handle=\_SB_.PCI0.LPCB.LDR3
dev.acpi_sysresource.1.%pnpinfo: _HID=PNP0C02 _UID=2
dev.acpi_sysresource.1.%parent: acpi0
dev.acpi_sysresource.2.%desc: System Resource
dev.acpi_sysresource.2.%driver: acpi_sysresource
dev.acpi_sysresource.2.%location: handle=\_SB_.PCI0.LPCB.LDR2
dev.acpi_sysresource.2.%pnpinfo: _HID=PNP0C02 _UID=5
dev.acpi_sysresource.2.%parent: acpi0
dev.acpi_sysresource.3.%desc: System Resource
dev.acpi_sysresource.3.%driver: acpi_sysresource
dev.acpi_sysresource.3.%location: handle=\_SB_.PCI0.LPCB.CWDT
dev.acpi_sysresource.3.%pnpinfo: _HID=INT3F00 _UID=0
dev.acpi_sysresource.3.%parent: acpi0
dev.acpi_sysresource.4.%desc: System Resource
dev.acpi_sysresource.4.%driver: acpi_sysresource
dev.acpi_sysresource.4.%location: handle=\_SB_.PCI0.LPCB.SIO1
dev.acpi_sysresource.4.%pnpinfo: _HID=PNP0C02 _UID=78
dev.acpi_sysresource.4.%parent: acpi0
dev.acpi_sysresource.5.%desc: System Resource
dev.acpi_sysresource.5.%driver: acpi_sysresource
dev.acpi_sysresource.5.%location: handle=\_SB_.PCI0.LPCB.RMSC

```



```

dev.acpi_sysresource.5.%npninfo: _HID=PNP0C02 _UID=16
dev.acpi_sysresource.5.%parent: acpi0
dev.acpi_sysresource.6.%desc: System Resource
dev.acpi_sysresource.6.%driver: acpi_sysresource
dev.acpi_sysresource.6.%location: handle=\_SB_.PCI0.LPCB.MBRD
dev.acpi_sysresource.6.%npninfo: _HID=PNP0C02 _UID=31
dev.acpi_sysresource.6.%parent: acpi0
dev.acpi_sysresource.7.%desc: System Resource
dev.acpi_sysresource.7.%driver: acpi_sysresource
dev.acpi_sysresource.7.%location: handle=\_SB_.PCI0.RP05.PPF1
dev.acpi_sysresource.7.%npninfo: _HID=PNP0C01 _UID=241
dev.acpi_sysresource.7.%parent: acpi0
dev.acpi_sysresource.8.%desc: System Resource
dev.acpi_sysresource.8.%driver: acpi_sysresource
dev.acpi_sysresource.8.%location: handle=\_SB_.PCI0.PDRC
dev.acpi_sysresource.8.%npninfo: _HID=PNP0C02 _UID=1
dev.acpi_sysresource.8.%parent: acpi0
dev.cpu.%parent:
dev.cpu.0.%desc: ACPI CPU
dev.cpu.0.%driver: cpu
dev.cpu.0.%location: handle=\_PR_.CPU0
dev.cpu.0.%npninfo: _HID=none _UID=0
dev.cpu.0.%parent: acpi0
dev.cpu.0.%freq: 3100
dev.cpu.0.%freq_levels: 3100/53000 2900/48172 2800/46082 2600/41518 2500/39557 2300/35732 2200/33398 2000/29812 1900/28070 1700/24245
1600/22615 1400/19464 1300/17511 1137/15322 1100/14571 1000/13151 875/11507 800/10012 700/8760 600/7509 500/6257 400/5006 300/3754
200/2503 100/1251
dev.cpu.0.%cx_supported: C1/1/1 C2/2/117
dev.cpu.0.%cx_lowest: C1
dev.cpu.0.%cx_usage: 100.00% 0.00% last 2774us
dev.cpu.1.%desc: ACPI CPU
dev.cpu.1.%driver: cpu
dev.cpu.1.%location: handle=\_PR_.CPU1
dev.cpu.1.%npninfo: _HID=none _UID=0
dev.cpu.1.%parent: acpi0
dev.cpu.1.%cx_supported: C1/1/1
dev.cpu.1.%cx_lowest: C1
dev.cpu.1.%cx_usage: 100.00% last 1321us
dev.hpet.%parent:
dev.hpet.0.%desc: High Precision Event Timer
dev.hpet.0.%driver: hpet
dev.hpet.0.%location: handle=\_SB_.PCI0.LPCB.HPET
dev.hpet.0.%npninfo: _HID=PNP0103 _UID=0
dev.hpet.0.%parent: acpi0
dev.atrtc.%parent:
dev.atrtc.0.%desc: AT realtime clock
dev.atrtc.0.%driver: atrtc
dev.atrtc.0.%location: handle=\_SB_.PCI0.LPCB.RTC_
dev.atrtc.0.%npninfo: _HID=PNP0B00 _UID=0
dev.atrtc.0.%parent: acpi0
dev.attimer.%parent:
dev.attimer.0.%desc: AT timer
dev.attimer.0.%driver: attimer
dev.attimer.0.%location: handle=\_SB_.PCI0.LPCB.TIMR
dev.attimer.0.%npninfo: _HID=PNP0100 _UID=0
dev.attimer.0.%parent: acpi0
dev.acpi_timer.%parent:
dev.acpi_timer.0.%desc: 24-bit timer at 3.579545MHz
dev.acpi_timer.0.%driver: acpi_timer
dev.acpi_timer.0.%location: unknown
dev.acpi_timer.0.%npninfo: unknown
dev.acpi_timer.0.%parent: acpi0
dev.pci_link.%parent:
dev.pci_link.0.%desc: ACPI PCI Link LNKA
dev.pci_link.0.%driver: pci_link
dev.pci_link.0.%location: handle=\_SB_.LNKA
dev.pci_link.0.%npninfo: _HID=PNP0C0F _UID=1
dev.pci_link.0.%parent: acpi0
dev.pci_link.1.%desc: ACPI PCI Link LNKB
dev.pci_link.1.%driver: pci_link
dev.pci_link.1.%location: handle=\_SB_.LNKB
dev.pci_link.1.%npninfo: _HID=PNP0C0F _UID=2
dev.pci_link.1.%parent: acpi0
dev.pci_link.2.%desc: ACPI PCI Link LNKC
dev.pci_link.2.%driver: pci_link
dev.pci_link.2.%location: handle=\_SB_.LNKC
dev.pci_link.2.%npninfo: _HID=PNP0C0F _UID=3
dev.pci_link.2.%parent: acpi0
dev.pci_link.3.%desc: ACPI PCI Link LNKD
dev.pci_link.3.%driver: pci_link
dev.pci_link.3.%location: handle=\_SB_.LNKD
dev.pci_link.3.%npninfo: _HID=PNP0C0F _UID=4
dev.pci_link.3.%parent: acpi0
dev.pci_link.4.%desc: ACPI PCI Link LNKE
dev.pci_link.4.%driver: pci_link
dev.pci_link.4.%location: handle=\_SB_.LNKE
dev.pci_link.4.%npninfo: _HID=PNP0C0F _UID=5
dev.pci_link.4.%parent: acpi0

```

```

dev.pci_link.5.%desc: ACPI PCI Link LNKF
dev.pci_link.5.%driver: pci_link
dev.pci_link.5.%location: handle=\_SB_.LNKF
dev.pci_link.5.%npninfo: _HID=PNP0C0F _UID=6
dev.pci_link.5.%parent: acpi0
dev.pci_link.6.%desc: ACPI PCI Link LNKG
dev.pci_link.6.%driver: pci_link
dev.pci_link.6.%location: handle=\_SB_.LNKG
dev.pci_link.6.%npninfo: _HID=PNP0C0F _UID=7
dev.pci_link.6.%parent: acpi0
dev.pci_link.7.%desc: ACPI PCI Link LNKH
dev.pci_link.7.%driver: pci_link
dev.pci_link.7.%location: handle=\_SB_.LNKH
dev.pci_link.7.%npninfo: _HID=PNP0C0F _UID=8
dev.pci_link.7.%parent: acpi0
dev.pci0.%parent:
dev.pci0.0.%desc: ACPI Host-PCI bridge
dev.pci0.0.%driver: pci0
dev.pci0.0.%location: handle=\_SB_.PCI0
dev.pci0.0.%npninfo: _HID=PNP0A08 _UID=0
dev.pci0.0.%parent: acpi0
dev.pci0.1.%desc: ACPI PCI-PCI bridge
dev.pci0.1.%driver: pci0
dev.pci0.1.%location: slot=28 function=0 handle=\_SB_.PCI0.RP01
dev.pci0.1.%npninfo: vendor=0x8086 device=0x8c10 subvendor=0x1bcf subdevice=0x8038 class=0x060400
dev.pci0.1.%parent: pci0
dev.pci0.1.%domain: 0
dev.pci0.1.%pribus: 0
dev.pci0.1.%secbus: 33
dev.pci0.1.%subbus: 56
dev.pci0.1.%wake: 0
dev.pci0.2.%desc: ACPI PCI-PCI bridge
dev.pci0.2.%driver: pci0
dev.pci0.2.%location: slot=28 function=4 handle=\_SB_.PCI0.RP05
dev.pci0.2.%npninfo: vendor=0x8086 device=0x8c18 subvendor=0x1bcf subdevice=0x8038 class=0x060400
dev.pci0.2.%parent: pci0
dev.pci0.2.%domain: 0
dev.pci0.2.%pribus: 0
dev.pci0.2.%secbus: 57
dev.pci0.2.%subbus: 57
dev.pci0.2.%wake: 0
dev.pci0.3.%desc: ACPI PCI-PCI bridge
dev.pci0.3.%driver: pci0
dev.pci0.3.%location: slot=28 function=5 handle=\_SB_.PCI0.RP06
dev.pci0.3.%npninfo: vendor=0x8086 device=0x8c1a subvendor=0x1bcf subdevice=0x8038 class=0x060400
dev.pci0.3.%parent: pci0
dev.pci0.3.%domain: 0
dev.pci0.3.%pribus: 0
dev.pci0.3.%secbus: 58
dev.pci0.3.%subbus: 64
dev.pci0.3.%wake: 0
dev.pci0.%parent:
dev.pci0.0.%desc: ACPI PCI bus
dev.pci0.0.%driver: pci0
dev.pci0.0.%location:
dev.pci0.0.%npninfo:
dev.pci0.0.%parent: pci0
dev.pci0.33.%desc: ACPI PCI bus
dev.pci0.33.%driver: pci0
dev.pci0.33.%location:
dev.pci0.33.%npninfo:
dev.pci0.33.%parent: pci0
dev.pci0.33.%wake: 0
dev.pci0.57.%desc: ACPI PCI bus
dev.pci0.57.%driver: pci0
dev.pci0.57.%location:
dev.pci0.57.%npninfo:
dev.pci0.57.%parent: pci0
dev.pci0.57.%wake: 0
dev.pci0.58.%desc: ACPI PCI bus
dev.pci0.58.%driver: pci0
dev.pci0.58.%location:
dev.pci0.58.%npninfo:
dev.pci0.58.%parent: pci0
dev.pci0.58.%wake: 0
dev.hostb0.%parent:
dev.hostb0.0.%desc: Host to PCI bridge
dev.hostb0.0.%driver: hostb0
dev.hostb0.0.%location: slot=0 function=0
dev.hostb0.0.%npninfo: vendor=0x8086 device=0x0c00 subvendor=0x1bcf subdevice=0x8038 class=0x060000
dev.hostb0.0.%parent: pci0
dev.xhci0.%parent:
dev.xhci0.0.%desc: Intel Lynx Point USB 3.0 controller
dev.xhci0.0.%driver: xhci0
dev.xhci0.0.%location: slot=20 function=0 handle=\_SB_.PCI0.XHC_
dev.xhci0.0.%npninfo: vendor=0x8086 device=0x8c31 subvendor=0x1bcf subdevice=0x8038 class=0x0c0330
dev.xhci0.0.%parent: pci0
dev.xhci0.0.%wake: 0

```

```

dev.usbus.%parent:
dev.usbus.0.%desc:
dev.usbus.0.%driver: usb
dev.usbus.0.%location:
dev.usbus.0.%pnpinfo:
dev.usbus.0.%parent: xhci0
dev.usbus.1.%desc:
dev.usbus.1.%driver: usb
dev.usbus.1.%location:
dev.usbus.1.%pnpinfo:
dev.usbus.1.%parent: ehci0
dev.usbus.2.%desc:
dev.usbus.2.%driver: usb
dev.usbus.2.%location:
dev.usbus.2.%pnpinfo:
dev.usbus.2.%parent: ehci1
dev.ehci.%parent:
dev.ehci.0.%desc: Intel Lynx Point USB 2.0 controller USB-B
dev.ehci.0.%driver: ehci
dev.ehci.0.%location: slot=26 function=0 handle=\_SB_.PCI0.EHC2
dev.ehci.0.%pnpinfo: vendor=0x8086 device=0x8c2d subvendor=0x1bcf subdevice=0x8038 class=0x0c0320
dev.ehci.0.%parent: pci0
dev.ehci.0.wake: 0
dev.ehci.1.%desc: Intel Lynx Point USB 2.0 controller USB-A
dev.ehci.1.%driver: ehci
dev.ehci.1.%location: slot=29 function=0 handle=\_SB_.PCI0.EHC1
dev.ehci.1.%pnpinfo: vendor=0x8086 device=0x8c26 subvendor=0x1bcf subdevice=0x8038 class=0x0c0320
dev.ehci.1.%parent: pci0
dev.ehci.1.wake: 0
dev.mfi.%parent:
dev.mfi.0.%desc: ThunderBolt
dev.mfi.0.%driver: mfi
dev.mfi.0.%location: slot=0 function=0 handle=\_SB_.PCI0.RP01.PXSX
dev.mfi.0.%pnpinfo: vendor=0x1000 device=0x005b subvendor=0x1000 subdevice=0x9272 class=0x010400
dev.mfi.0.%parent: pci33
dev.mfi.0.delete_busy_volumes: 0
dev.mfi.0.keep_deleted_volumes: 0
dev.mfi.0.wake: 0
dev.vgapci.%parent:
dev.vgapci.0.%desc: VGA-compatible display
dev.vgapci.0.%driver: vgapci
dev.vgapci.0.%location: slot=0 function=0 handle=\_SB_.PCI0.RP05.PXSX
dev.vgapci.0.%pnpinfo: vendor=0x102b device=0x0522 subvendor=0x1bcf subdevice=0x8038 class=0x030000
dev.vgapci.0.%parent: pci57
dev.vgapci.0.wake: 0
dev.bge.%parent:
dev.bge.0.%desc: Broadcom NetXtreme Gigabit Ethernet Controller, ASIC rev. 0x5717100
dev.bge.0.%driver: bge
dev.bge.0.%location: slot=0 function=0 handle=\_SB_.PCI0.RP06.LAN1
dev.bge.0.%pnpinfo: vendor=0x14e4 device=0x1656 subvendor=0x1bcf subdevice=0x8038 class=0x020000
dev.bge.0.%parent: pci58
dev.bge.0.forced_collapse: 0
dev.bge.0.msi: 1
dev.bge.0.forced_udpcsum: 0
dev.bge.0.stats.FramesDroppedDueToFilters: 0
dev.bge.0.stats.DmaWriteQueueFull: 0
dev.bge.0.stats.DmaWriteHighPriQueueFull: 0
dev.bge.0.stats.NoMoreRxBDs: 0
dev.bge.0.stats.InputDiscards: 0
dev.bge.0.stats.InputErrors: 0
dev.bge.0.stats.RecvThresholdHit: 0
dev.bge.0.stats.rx.ifHCInOctets: 6371
dev.bge.0.stats.rx.Fragments: 0
dev.bge.0.stats.rx.UnicastPkts: 13
dev.bge.0.stats.rx.MulticastPkts: 5
dev.bge.0.stats.rx.BroadcastPkts: 47
dev.bge.0.stats.rx.FCSErrors: 0
dev.bge.0.stats.rx.AlignmentErrors: 0
dev.bge.0.stats.rx.xonPauseFramesReceived: 0
dev.bge.0.stats.rx.xoffPauseFramesReceived: 0
dev.bge.0.stats.rx.ControlFramesReceived: 0
dev.bge.0.stats.rx.xoffStateEntered: 0
dev.bge.0.stats.rx.FramesTooLong: 0
dev.bge.0.stats.rx.Jabbers: 0
dev.bge.0.stats.rx.UndersizePkts: 0
dev.bge.0.stats.tx.ifHCOutOctets: 1673
dev.bge.0.stats.tx.Collisions: 0
dev.bge.0.stats.tx.XonSent: 0
dev.bge.0.stats.tx.XoffSent: 0
dev.bge.0.stats.tx.InternalMacTransmitErrors: 0
dev.bge.0.stats.tx.SingleCollisionFrames: 0
dev.bge.0.stats.tx.MultipleCollisionFrames: 0
dev.bge.0.stats.tx.DeferredTransmissions: 0
dev.bge.0.stats.tx.ExcessiveCollisions: 0
dev.bge.0.stats.tx.LateCollisions: 0
dev.bge.0.stats.tx.UnicastPkts: 9
dev.bge.0.stats.tx.MulticastPkts: 0
dev.bge.0.stats.tx.BroadcastPkts: 4

```

```

dev.bge.1.%desc: Broadcom NetXtreme Gigabit Ethernet Controller, ASIC rev. 0x5717100
dev.bge.1.%driver: bge
dev.bge.1.%location: slot=0 function=1 handle=\_SB_.PCI0.RP06.LAN2
dev.bge.1.%npninfo: vendor=0x14e4 device=0x1656 subvendor=0x1bcf subdevice=0x8038 class=0x020000
dev.bge.1.%parent: pci58
dev.bge.1.forced_collapse: 0
dev.bge.1.msi: 1
dev.bge.1.forced_udpcsum: 0
dev.bge.1.stats.FramesDroppedDueToFilters: 0
dev.bge.1.stats.DmaWriteQueueFull: 0
dev.bge.1.stats.DmaWriteHighPriQueueFull: 0
dev.bge.1.stats.NoMoreRxBDs: 0
dev.bge.1.stats.InputDiscards: 0
dev.bge.1.stats.InputErrors: 0
dev.bge.1.stats.RecvThresholdHit: 0
dev.bge.1.stats.rx.ifHCInOctets: 0
dev.bge.1.stats.rx.Fragments: 0
dev.bge.1.stats.rx.UnicastPkts: 0
dev.bge.1.stats.rx.MulticastPkts: 0
dev.bge.1.stats.rx.BroadcastPkts: 0
dev.bge.1.stats.rx.FCSerrors: 0
dev.bge.1.stats.rx.AlignmentErrors: 0
dev.bge.1.stats.rx.xonPauseFramesReceived: 0
dev.bge.1.stats.rx.xoffPauseFramesReceived: 0
dev.bge.1.stats.rx.ControlFramesReceived: 0
dev.bge.1.stats.rx.xoffStateEntered: 0
dev.bge.1.stats.rx.FramesTooLong: 0
dev.bge.1.stats.rx.Jabbers: 0
dev.bge.1.stats.rx.UndersizePkts: 0
dev.bge.1.stats.tx.ifHCOutOctets: 0
dev.bge.1.stats.tx.Collisions: 0
dev.bge.1.stats.tx.XonSent: 0
dev.bge.1.stats.tx.XoffSent: 0
dev.bge.1.stats.tx.InternalMacTransmitErrors: 0
dev.bge.1.stats.tx.SingleCollisionFrames: 0
dev.bge.1.stats.tx.MultipleCollisionFrames: 0
dev.bge.1.stats.tx.DeferredTransmissions: 0
dev.bge.1.stats.tx.ExcessiveCollisions: 0
dev.bge.1.stats.tx.LateCollisions: 0
dev.bge.1.stats.tx.UnicastPkts: 0
dev.bge.1.stats.tx.MulticastPkts: 0
dev.bge.1.stats.tx.BroadcastPkts: 0
dev.miibus.%parent:
dev.miibus.0.%desc: MII bus
dev.miibus.0.%driver: miibus
dev.miibus.0.%location:
dev.miibus.0.%npninfo:
dev.miibus.0.%parent: bge0
dev.miibus.1.%desc: MII bus
dev.miibus.1.%driver: miibus
dev.miibus.1.%location:
dev.miibus.1.%npninfo:
dev.miibus.1.%parent: bge1
dev.brgphy.%parent:
dev.brgphy.0.%desc: BCM5717C 1000BASE-T media interface
dev.brgphy.0.%driver: brgphy
dev.brgphy.0.%location: phyno=1
dev.brgphy.0.%npninfo: oui=0x1be9 model=0x20 rev=0x0
dev.brgphy.0.%parent: miibus0
dev.brgphy.1.%desc: BCM5717C 1000BASE-T media interface
dev.brgphy.1.%driver: brgphy
dev.brgphy.1.%location: phyno=2
dev.brgphy.1.%npninfo: oui=0x1be9 model=0x20 rev=0x0
dev.brgphy.1.%parent: miibus1
dev.isab.%parent:
dev.isab.0.%desc: PCI-ISA bridge
dev.isab.0.%driver: isab
dev.isab.0.%location: slot=31 function=0 handle=\_SB_.PCI0.LPCB
dev.isab.0.%npninfo: vendor=0x8086 device=0x8c54 subvendor=0x1bcf subdevice=0x8038 class=0x060100
dev.isab.0.%parent: pci0
dev.isa.%parent:
dev.isa.0.%desc: ISA bus
dev.isa.0.%driver: isa
dev.isa.0.%location:
dev.isa.0.%npninfo:
dev.isa.0.%parent: isab0
dev.atapci.%parent:
dev.atapci.0.%desc: Intel Lynx Point SATA300 controller
dev.atapci.0.%driver: atapci
dev.atapci.0.%location: slot=31 function=2 handle=\_SB_.PCI0.SAT0
dev.atapci.0.%npninfo: vendor=0x8086 device=0x8c00 subvendor=0x1bcf subdevice=0x8038 class=0x01018f
dev.atapci.0.%parent: pci0
dev.atapci.1.%desc: Intel Lynx Point SATA300 controller
dev.atapci.1.%driver: atapci
dev.atapci.1.%location: slot=31 function=5 handle=\_SB_.PCI0.SAT1
dev.atapci.1.%npninfo: vendor=0x8086 device=0x8c08 subvendor=0x1bcf subdevice=0x8038 class=0x010185
dev.atapci.1.%parent: pci0
dev.ata.%parent:

```

```

dev.ata.2.%desc: ATA channel
dev.ata.2.%driver: ata
dev.ata.2.%location: channel=0
dev.ata.2.%pnpinfo:
dev.ata.2.%parent: atapci0
dev.ata.3.%desc: ATA channel
dev.ata.3.%driver: ata
dev.ata.3.%location: channel=1
dev.ata.3.%pnpinfo:
dev.ata.3.%parent: atapci0
dev.ata.4.%desc: ATA channel
dev.ata.4.%driver: ata
dev.ata.4.%location: channel=0
dev.ata.4.%pnpinfo:
dev.ata.4.%parent: atapci1
dev.ata.5.%desc: ATA channel
dev.ata.5.%driver: ata
dev.ata.5.%location: channel=1
dev.ata.5.%pnpinfo:
dev.ata.5.%parent: atapci1
dev.acpi_button.%parent:
dev.acpi_button.0.%desc: Sleep Button
dev.acpi_button.0.%driver: acpi_button
dev.acpi_button.0.%location: handle=\_SB_.SLPB
dev.acpi_button.0.%pnpinfo: _HID=PNP0C0E _UID=0
dev.acpi_button.0.%parent: acpi0
dev.acpi_button.1.%desc: Power Button
dev.acpi_button.1.%driver: acpi_button
dev.acpi_button.1.%location: handle=\_SB_.PWRB
dev.acpi_button.1.%pnpinfo: _HID=PNP0C0C _UID=0
dev.acpi_button.1.%parent: acpi0
dev.atdma.%parent:
dev.atdma.0.%desc: AT DMA controller
dev.atdma.0.%driver: atdma
dev.atdma.0.%location: handle=\_SB_.PCI0.LPCB.DMAC
dev.atdma.0.%pnpinfo: _HID=PNP0200 _UID=0
dev.atdma.0.%parent: acpi0
dev.fpupnp.%parent:
dev.fpupnp.0.%desc: Legacy ISA coprocessor support
dev.fpupnp.0.%driver: fpupnp
dev.fpupnp.0.%location: handle=\_SB_.PCI0.LPCB.MATH
dev.fpupnp.0.%pnpinfo: _HID=PNP0C04 _UID=0
dev.fpupnp.0.%parent: acpi0
dev.uart.%parent:
dev.uart.0.%desc: 16550 or compatible
dev.uart.0.%driver: uart
dev.uart.0.%location: handle=\_SB_.PCI0.LPCB.UAR1
dev.uart.0.%pnpinfo: _HID=PNP0501 _UID=1
dev.uart.0.%parent: acpi0
dev.uart.0.wake: 0
dev.uart.1.%desc: 16550 or compatible
dev.uart.1.%driver: uart
dev.uart.1.%location: handle=\_SB_.PCI0.LPCB.UAR2
dev.uart.1.%pnpinfo: _HID=PNP0501 _UID=2
dev.uart.1.%parent: acpi0
dev.uart.1.wake: 0
dev.apic.%parent:
dev.apic.0.%desc: APIC resources
dev.apic.0.%driver: apic
dev.apic.0.%location:
dev.apic.0.%pnpinfo:
dev.apic.0.%parent: nexus0
dev.orm.%parent:
dev.orm.0.%desc: ISA Option ROMs
dev.orm.0.%driver: orm
dev.orm.0.%location:
dev.orm.0.%pnpinfo:
dev.orm.0.%parent: isa0
dev.sc.%parent:
dev.sc.0.%desc: System console
dev.sc.0.%driver: sc
dev.sc.0.%location:
dev.sc.0.%pnpinfo:
dev.sc.0.%parent: isa0
dev.vga.%parent:
dev.vga.0.%desc: Generic ISA VGA
dev.vga.0.%driver: vga
dev.vga.0.%location:
dev.vga.0.%pnpinfo:
dev.vga.0.%parent: isa0
dev.acpi_perf.%parent:
dev.acpi_perf.0.%desc:
dev.acpi_perf.0.%driver: acpi_perf
dev.acpi_perf.0.%location:
dev.acpi_perf.0.%pnpinfo:
dev.acpi_perf.0.%parent: cpu0
dev.acpi_perf.1.%desc:
dev.acpi_perf.1.%driver: acpi_perf

```

```

dev.acpi_perf.1.%location:
dev.acpi_perf.1.%pnpinfo:
dev.acpi_perf.1.%parent: cpu1
dev.est.%parent:
dev.est.0.%desc: Enhanced SpeedStep Frequency Control
dev.est.0.%driver: est
dev.est.0.%location:
dev.est.0.%pnpinfo:
dev.est.0.%parent: cpu0
dev.est.0.freq_settings: 3100/53000 2900/48172 2800/46082 2600/41518 2500/39557 2300/35732 2200/33398 2000/29812 1900/28070 1700/24245
1600/22615 1400/19464 1300/17511 1100/14571 1000/13151 800/10012
dev.est.1.%desc: Enhanced SpeedStep Frequency Control
dev.est.1.%driver: est
dev.est.1.%location:
dev.est.1.%pnpinfo:
dev.est.1.%parent: cpu1
dev.est.1.freq_settings: 3100/53000 2900/48172 2800/46082 2600/41518 2500/39557 2300/35732 2200/33398 2000/29812 1900/28070 1700/24245
1600/22615 1400/19464 1300/17511 1100/14571 1000/13151 800/10012
dev.cpubfreq.%parent:
dev.cpubfreq.0.%desc:
dev.cpubfreq.0.%driver: cpubfreq
dev.cpubfreq.0.%location:
dev.cpubfreq.0.%pnpinfo:
dev.cpubfreq.0.%parent: cpu0
dev.cpubfreq.1.%desc:
dev.cpubfreq.1.%driver: cpubfreq
dev.cpubfreq.1.%location:
dev.cpubfreq.1.%pnpinfo:
dev.cpubfreq.1.%parent: cpu1
dev.p4tcc.%parent:
dev.p4tcc.0.%desc: CPU Frequency Thermal Control
dev.p4tcc.0.%driver: p4tcc
dev.p4tcc.0.%location:
dev.p4tcc.0.%pnpinfo:
dev.p4tcc.0.%parent: cpu0
dev.p4tcc.0.freq_settings: 10000/-1 8750/-1 7500/-1 6250/-1 5000/-1 3750/-1 2500/-1 1250/-1
dev.p4tcc.1.%desc: CPU Frequency Thermal Control
dev.p4tcc.1.%driver: p4tcc
dev.p4tcc.1.%location:
dev.p4tcc.1.%pnpinfo:
dev.p4tcc.1.%parent: cpu1
dev.p4tcc.1.freq_settings: 10000/-1 8750/-1 7500/-1 6250/-1 5000/-1 3750/-1 2500/-1 1250/-1
dev.uhub.%parent:
dev.uhub.0.%desc: Intel EHCI root HUB, class 9/0, rev 2.00/1.00, addr 1
dev.uhub.0.%driver: uhub
dev.uhub.0.%location:
dev.uhub.0.%pnpinfo:
dev.uhub.0.%parent: usb1
dev.uhub.1.%desc: 0x8086 XHCI root HUB, class 9/0, rev 3.00/1.00, addr 1
dev.uhub.1.%driver: uhub
dev.uhub.1.%location:
dev.uhub.1.%pnpinfo:
dev.uhub.1.%parent: usb0
dev.uhub.2.%desc: Intel EHCI root HUB, class 9/0, rev 2.00/1.00, addr 1
dev.uhub.2.%driver: uhub
dev.uhub.2.%location:
dev.uhub.2.%pnpinfo:
dev.uhub.2.%parent: usb2
dev.uhub.3.%desc: Chicony Generic USB Hub, class 9/0, rev 1.10/1.02, addr 1
dev.uhub.3.%driver: uhub
dev.uhub.3.%location: bus=0 hubaddr=1 port=6 devaddr=2 interface=0
dev.uhub.3.%pnpinfo: vendor=0x04fe product=0x0008 devclass=0x09 devsubclass=0x00 sernum="" release=0x0102 mode=host intclass=0x09
intsubclass=0x00 intprotocol=0x00
dev.uhub.3.%parent: uhub1
dev.uhub.4.%desc: vendor 0x8087 product 0x8008, class 9/0, rev 2.00/0.04, addr 2
dev.uhub.4.%driver: uhub
dev.uhub.4.%location: bus=1 hubaddr=1 port=1 devaddr=2 interface=0
dev.uhub.4.%pnpinfo: vendor=0x8087 product=0x8008 devclass=0x09 devsubclass=0x00 sernum="" release=0x0004 mode=host intclass=0x09
intsubclass=0x00 intprotocol=0x00
dev.uhub.4.%parent: uhub0
dev.uhub.5.%desc: vendor 0x8087 product 0x8000, class 9/0, rev 2.00/0.04, addr 2
dev.uhub.5.%driver: uhub
dev.uhub.5.%location: bus=2 hubaddr=1 port=1 devaddr=2 interface=0
dev.uhub.5.%pnpinfo: vendor=0x8087 product=0x8000 devclass=0x09 devsubclass=0x00 sernum="" release=0x0004 mode=host intclass=0x09
intsubclass=0x00 intprotocol=0x00
dev.uhub.5.%parent: uhub2
dev.mfid.%parent:
dev.mfid.0.%desc:
dev.mfid.0.%driver: mfid
dev.mfid.0.%location:
dev.mfid.0.%pnpinfo:
dev.mfid.0.%parent: mfi0
dev.ukbd.%parent:
dev.ukbd.0.%desc: Chicony PFU-65 USB Keyboard, class 0/0, rev 1.10/1.02, addr 2
dev.ukbd.0.%driver: ukbd
dev.ukbd.0.%location: bus=0 hubaddr=2 port=1 devaddr=3 interface=0
dev.ukbd.0.%pnpinfo: vendor=0x04fe product=0x0006 devclass=0x00 devsubclass=0x00 sernum="" release=0x0102 mode=host intclass=0x03
intsubclass=0x01 intprotocol=0x01

```

```
dev.ukbd.0.%parent: uhub3
dev.ukbd.1.%desc: Keyboard Interface
dev.ukbd.1.%driver: ukbd
dev.ukbd.1.%location: bus=0 hubaddr=1 port=7 devaddr=4 interface=0
dev.ukbd.1.%pnpinfo: vendor=0x046b product=0xff10 devclass=0x00 devsubclass=0x00 sernum="" release=0x0100 mode=host intclass=0x03
intsubclass=0x01 intprotocol=0x01
dev.ukbd.1.%parent: uhub1
dev.ums.%parent:
dev.ums.0.%desc: Mouse Interface
dev.ums.0.%driver: ums
dev.ums.0.%location: bus=0 hubaddr=1 port=7 devaddr=4 interface=1
dev.ums.0.%pnpinfo: vendor=0x046b product=0xff10 devclass=0x00 devsubclass=0x00 sernum="" release=0x0100 mode=host intclass=0x03
intsubclass=0x01 intprotocol=0x02
dev.ums.0.%parent: uhub1
dev.ums.0.%parseinfo: i1: Z:r0, p40, s8; B1:r0, p0, s1; B2:r0, p1, s1; B3:r0, p2, s1;
dev.umass.%parent:
dev.umass.0.%desc: UFD 2.0 Silicon-Power4G, class 0/0, rev 2.00/1.00, addr 4
dev.umass.0.%driver: umass
dev.umass.0.%location: bus=0 hubaddr=1 port=2 devaddr=5 interface=0
dev.umass.0.%pnpinfo: vendor=0x13fe product=0x4100 devclass=0x00 devsubclass=0x00 sernum="12101504058E6002A8B89180B31" release=0x0100
mode=host intclass=0x08 intsubclass=0x06 intprotocol=0x50
dev.umass.0.%parent: uhub1
hptmv.status: RocketRAID 18xx SATA Controller driver Version v1.16
```

# システム起動時メッセージ

```
bge0: link state changed to DOWN
bge0: link state changed to UP
Waiting (max 60 seconds) for system process `vnlru' to stop...done
Waiting (max 60 seconds) for system process `bufdaemon' to stop...done
Waiting (max 60 seconds) for system process `syncer' to stop...
Syncing disks, vnodes remaining...0 0 0 done
All buffers synced.
Copyright (c) 1992-2014 The FreeBSD Project.
Copyright (c) 1979, 1980, 1983, 1986, 1988, 1989, 1991, 1992, 1993, 1994
    The Regents of the University of California. All rights reserved.
FreeBSD is a registered trademark of The FreeBSD Foundation.
FreeBSD 10.1-RELEASE #0 r274401: Tue Nov 11 21:02:49 UTC 2014
    root@releng1.nyi.freebsd.org:/usr/obj/usr/src/sys/GENERIC amd64
FreeBSD clang version 3.4.1 (tags/RELEASE_34/dot1-final 208032) 20140512
CPU: Intel(R) Pentium(R) CPU G3240 @ 3.10GHz (3092.91-MHz K8-class CPU)
    Origin = "GenuineIntel" Id = 0x306c3 Family = 0x6 Model = 0x3c Stepping = 3

Features=0xbfbfbfbf<FPU,VME,DE,PSE,TSC,MSR,PAE,MCE,CX8,APIC,SEP,MTRR,PGE,MCA,CMOV,PAT,PSE36,CLFLUSH,DTS,ACPI,MMX,FXSR,SSE,SSE2,SS,HTT,TM,
    Features2=0x4ddaebbf<SSE3,PCLMULQDQ,DTES64,MON,DS_CPL,VMX,EST,TM2,SSSE3,
<sb11>,CX16,xTPR,PDCM,PCID,SSE4.1,SSE4.2,MOVBE,POPCNT,TSCDLT,XSAVE,OSXSAVE,RDRAND>
AMD Features=0x2c100800<SYSCALL,NX,Page1GB,RDTSCP,LM>
    AMD Features2=0x21<LAHF,ABM>
    Structured Extended Features=0x2603<FSGSBASE,TSCADJ,ERMS,INVPCID>
    VT-x: PAT,HLT,MTF,PAUSE,EPT,UG,VPID
    TSC: P-state invariant, performance statistics
real memory = 8589934592 (8192 MB)
avail memory = 8212467712 (7832 MB)
Event timer "LAPIC" quality 600
ACPI APIC Table: <AMI 06A0 >
FreeBSD/SMP: Multiprocessor System Detected: 2 CPUs
FreeBSD/SMP: 1 package(s) x 2 core(s)
    cpu0 (BSP): APIC ID: 0
    cpu1 (AP): APIC ID: 2
ioapic0 <Version 2.0> irqs 0-23 on motherboard
kbd1 at kbdmux0
random: <Software, Yarrow> initialized
acpi0: <AMI 06A0> on motherboard
acpi0: Power Button (fixed)
acpi0: reservation of 0, a0000 (3) failed
cpu0: <ACPI CPU> on acpi0
cpu1: <ACPI CPU> on acpi0
hpet0: <High Precision Event Timer> iomem 0xfed00000-0xfed003ff on acpi0
Timecounter "HPET" frequency 14318180 Hz quality 950
Event timer "HPET" frequency 14318180 Hz quality 550
Event timer "HPET1" frequency 14318180 Hz quality 440
Event timer "HPET2" frequency 14318180 Hz quality 440
Event timer "HPET3" frequency 14318180 Hz quality 440
Event timer "HPET4" frequency 14318180 Hz quality 440
Event timer "HPET5" frequency 14318180 Hz quality 440
Event timer "HPET6" frequency 14318180 Hz quality 440
atrtc0: <AT realtime clock> port 0x70-0x77 irq 8 on acpi0
Event timer "RTC" frequency 32768 Hz quality 0
attimer0: <AT timer> port 0x40-0x43,0x50-0x53 irq 0 on acpi0
Timecounter "i8254" frequency 1193182 Hz quality 0
Event timer "i8254" frequency 1193182 Hz quality 100
Timecounter "ACPI-fast" frequency 3579545 Hz quality 900
acpi.timer0: <24-bit timer at 3.579545MHz> port 0x1808-0x180b on acpi0
pcib0: <ACPI Host-PCI bridge> port 0xcf8-0xcff on acpi0
pci0: <ACPI PCI bus> on pcib0
xhci0: <Intel Lynx Point USB 3.0 controller> mem 0xdfa00000-0xdfa0ffff irq 16 at device 20.0 on pci0
xhci0: 32 byte context size.
xhci0: Port routing mask set to 0xffffffff
usb0 on xhci0
pci0: <simple comms> at device 22.0 (no driver attached)
pci0: <simple comms> at device 22.1 (no driver attached)
ehci0: <Intel Lynx Point USB 2.0 controller USB-B> mem 0xdfa12000-0xdfa123ff irq 16 at device 26.0 on pci0
usb1: EHCI version 1.0
usb1 on ehci0
pcib1: <ACPI PCI-PCI bridge> irq 16 at device 28.0 on pci0
pci33: <ACPI PCI bus> on pcib1
LSI MegaRAID SAS FreeBSD mrsas driver version: 06.704.01.01-fbsd
mfi0: <ThunderBolt> port 0xe000-0xe0ff mem 0xdf960000-0xdf963fff,0xdf900000-0xdf93ffff irq 16 at device 0.0 on pci33
mfi0: Using MSI
mfi0: Megaraid SAS driver Ver 4.23
mfi0: FW MaxCmds = 1008, limiting to 128
mfi0: MaxCmd = 1008, Drv MaxCmd = 128, MaxSgl = 70, state = 0xb75003f0
pcib2: <ACPI PCI-PCI bridge> irq 16 at device 28.4 on pci0
pcib2: failed to allocate initial memory window: 0xde000000-0xdf8fffff
pci57: <ACPI PCI bus> on pcib2
vgapci0: <VGA-compatible display> mem 0xde000000-0xdeffff,0xdf000000-0xdf7fffff irq 16 at device 0.0 on pci57
vgapci0: Boot video device
pci3: <ACPI PCI-PCI bridge> irq 17 at device 28.5 on pci0
pci58: <ACPI PCI bus> on pcib3
```



bge0: <Broadcom NetXtreme Gigabit Ethernet Controller, ASIC rev. 0x5717100> mem  
0xdfe50000-0xdfefffff,0xdfef0000-0xdfef4fff,0xdfef3000-0xdfef3fff irq 17 at device 0.0 on pci58  
bge0: APE FW version: NCSI v1.2.33.0  
bge0: CHIP ID 0x05717100; ASIC REV 0x5717; CHIP REV 0x57171; PCI-E  
miibus0: <MII bus> on bge0  
brgphy0: <BCM5717C 1000BASE-T media interface> PHY 1 on miibus0  
brgphy0: 10baseT, 10baseT-FDX, 100baseTX, 100baseTX-FDX, 1000baseT, 1000baseT-master, 1000baseT-FDX, 1000baseT-FDX-master, auto,  
auto-flow  
bge0: Ethernet address: 94:de:80:ff:25:96  
bge1: <Broadcom NetXtreme Gigabit Ethernet Controller, ASIC rev. 0x5717100> mem  
0xdfef2000-0xdfef2fff,0xdfef1000-0xdfef1fff,0xdfef0000-0xdfef0fff irq 18 at device 0.1 on pci58  
bge1: APE FW version: NCSI v1.2.33.0  
bge1: CHIP ID 0x05717100; ASIC REV 0x5717; CHIP REV 0x57171; PCI-E  
miibus1: <MII bus> on bge1  
brgphy1: <BCM5717C 1000BASE-T media interface> PHY 2 on miibus1  
brgphy1: 10baseT, 10baseT-FDX, 100baseTX, 100baseTX-FDX, 1000baseT, 1000baseT-master, 1000baseT-FDX, 1000baseT-FDX-master, auto,  
auto-flow  
bge1: Ethernet address: 94:de:80:ff:25:97  
ehci1: <Intel Lynx Point USB 2.0 controller USB-A> mem 0xdfa11000-0xdfa113ff irq 23 at device 29.0 on pci0  
usb2: EHCI version 1.0  
usb2 on ehci1  
isab0: <PCI-ISA bridge> at device 31.0 on pci0  
isa0: <ISA bus> on isab0  
atapci0: <Intel Lynx Point SATA300 controller> port 0xf0d0-0xf0d7,0xf0c0-0xf0c3,0xf0b0-0xf0b7,0xf0a0-0xf0a3,0xf090-0xf09f,0xf080-0xf08f  
irq 19 at device 31.2 on pci0  
ata2: <ATA channel> at channel 0 on atapci0  
ata3: <ATA channel> at channel 1 on atapci0  
atapci1: <Intel Lynx Point SATA300 controller> port 0xf070-0xf077,0xf060-0xf063,0xf050-0xf057,0xf040-0xf043,0xf030-0xf03f,0xf020-0xf02f  
irq 19 at device 31.5 on pci0  
ata4: <ATA channel> at channel 0 on atapci1  
ata5: <ATA channel> at channel 1 on atapci1  
acpi\_button0: <Sleep Button> on acpi0  
acpi\_button1: <Power Button> on acpi0  
uart0: <16550 or compatible> port 0x3f8-0x3ff irq 4 flags 0x10 on acpi0  
uart1: <16550 or compatible> port 0x2f8-0x2ff irq 3 on acpi0  
orm0: <ISA Option ROMs> at iomem 0xc0000-0xc7fff,0xcf800-0xd27ff on isa0  
sc0: <System console> at flags 0x100 on isa0  
sc0: VGA <16 virtual consoles, flags=0x300>  
vga0: <Generic ISA VGA> at port 0x3c0-0x3df iomem 0xa0000-0xbffff on isa0  
ppc0: cannot reserve I/O port range  
est0: <Enhanced SpeedStep Frequency Control> on cpu0  
p4tcc0: <CPU Frequency Thermal Control> on cpu0  
est1: <Enhanced SpeedStep Frequency Control> on cpu1  
p4tcc1: <CPU Frequency Thermal Control> on cpu1  
mfi0: 2073 (478795655s/0x0020/info) - Shutdown command received from host  
mfi0: 2074 (boot + 8s/0x0020/info) - Firmware initialization started (PCI ID 005b/1000/9272/1000)  
mfi0: 2075 (boot + 8s/0x0020/info) - Firmware version 3.230.115-3241  
mfi0: 2076 (boot + 10s/0x0008/info) - Battery Present  
mfi0: 2077 (boot + 10s/0x0008/info) - Battery Present  
mfi0: 2078 (boot + 25s/0x0020/info) - Package version 23.11.0-0038  
mfi0: 2079 (boot + 25s/0x0020/info) - Board Revision 10D  
mfi0: 2080 (boot + 43s/0x0002/info) - Inserted: PD 08(e0xfc/s0)  
mfi0: 2081 (boot + 43s/0x0002/info) - Inserted: PD 08(e0xfc/s0) Info: enclPd=fc, scsiType=0, portMap=00,  
sasAddr=5000cca045069231,0000000000000000  
mfi0: 2082 (478795704s/0x0020/info) - Time established as 03/04/15 14:48:24; (47 seconds since power on)  
mfi0: 2083 (478795737s/0x0008/info) - Battery temperature is normal  
mfi0: 2084 (478795738s/0x0020/info) - Host driver is loaded and operational  
random: unblocking device.  
usb0: 5.0Gbps Super Speed USB v3.0  
Timecounters tick every 1.000 msec  
usb1: 480Mbps High Speed USB v2.0  
usb2: 480Mbps High Speed USB v2.0  
ugen1.1: <Intel> at usb1  
uhub0: <Intel EHCI root HUB, class 9/0, rev 2.00/1.00, addr 1> on usb1  
ugen0.1: <0x8086> at usb0  
uhub1: <0x8086 XHCI root HUB, class 9/0, rev 3.00/1.00, addr 1> on usb0  
ugen2.1: <Intel> at usb2  
uhub2: <Intel EHCI root HUB, class 9/0, rev 2.00/1.00, addr 1> on usb2  
mfi0 on mfi0  
mfi0: 139200MB (285081600 sectors) RAID volume 'array0' is optimal  
uhub0: 2 ports with 2 removable, self powered  
uhub2: 2 ports with 2 removable, self powered  
uhub1: 21 ports with 21 removable, self powered  
ugen0.2: <Chicony> at usb0  
uhub3: <Chicony Generic USB Hub, class 9/0, rev 1.10/1.02, addr 1> on usb0  
ugen1.2: <vendor 0x8087> at usb1  
uhub4: <vendor 0x8087 product 0x8008, class 9/0, rev 2.00/0.04, addr 2> on usb1  
ugen2.2: <vendor 0x8087> at usb2  
uhub5: <vendor 0x8087 product 0x8000, class 9/0, rev 2.00/0.04, addr 2> on usb2  
cd0 at ata4 bus 0 scbus2 target 0 lun 0  
cd0: <MATSHITA DVD-ROM UJ8E0 1.00> Removable CD-ROM SCSI-0 device  
cd0: Serial Number SP0012R02764  
cd0: 150.000MB/s transfers (SATA 1.x, UDMA5, ATAPI 12bytes, PIO 8192bytes)  
cd0: Attempt to query device size failed: NOT READY, Medium not present - tray closed  
uhub4: 6 ports with 6 removable, self powered  
uhub5: 6 ports with 6 removable, self powered  
uhub3: 3 ports with 2 removable, bus powered  
SMP: AP CPU #1 Launched!

```
Timecounter "TSC-low" frequency 1546453840 Hz quality 1000
Root mount waiting for: usb0
ugen0.3: <Chicony> at usb0
ukbd0: <Chicony PFU-65 USB Keyboard, class 0/0, rev 1.10/1.02, addr 2> on usb0
kbd0 at ukbd0
Root mount waiting for: usb0
ugen0.4: <American Megatrends Inc.> at usb0
ukbd1: <Keyboard Interface> on usb0
kbd2 at ukbd1
Trying to mount root from ufs:/dev/mfid0p2 [rw]...
ums0: <Mouse Interface> on usb0
ums0: 3 buttons and [Z] coordinates ID=0
```

# カーネルデバイスツリー

```
nexus0
  apic0
    I/O memory addresses:
      0xfec00000-0xfec0001f
  ram0
    I/O memory addresses:
      0x0-0x97fff
      0x100000-0xb984ffff
      0xb9857000-0xcc7a7fff
      0xcf7ff000-0xcf7fffff
      0x100000000-0x22ffffff
  acpi0
    Interrupt request lines:
      0x9
    I/O ports:
      0x10-0x1f
      0x22-0x3f
      0x44-0x5f
      0x62-0x63
      0x65-0x6f
      0x72-0x7f
      0x80
      0x84-0x86
      0x88
      0x8c-0x8e
      0x90-0x9f
      0xa2-0xbf
      0xe0-0xef
      0x4d0-0x4d1
      0x800-0x87f
      0xca4-0xca5
      0x1854-0x1857
    I/O memory addresses:
      0xdf800000-0xdf87ffff
      0xdf894000-0xdf894fff
      0xdffe0000-0xdffeffff
      0xe0000000-0xeffffff
      0xfed10000-0xfed17fff
      0xfed18000-0xfed18fff
      0xfed19000-0xfed19fff
      0xfed1c000-0xfed1ffff
      0xfed20000-0xfed3ffff
      0xfed40000-0xfed44fff
      0xfed45000-0xfed8ffff
      0xfed90000-0xfed93fff
      0xfe000000-0xfeffffff
      0xff000000-0xffffffff
  cpu0
    I/O ports:
      0x1815
  acpi_perf0
  est0
  p4tcc0
  cpufreq0
  cpu1
  acpi_perf1
  est1
  p4tcc1
  cpufreq1
  pcib0
    I/O ports:
      0xcf8-0xcff
  pci0
  hostb0
  xhci0
    Interrupt request lines:
      0x108
    I/O memory addresses:
      0xdfa00000-0xdfa0ffff
  usb0
  uhub1
  uhub3
  ukbd0
  ukbd1
  ums0
  umass0
  ehci0
    Interrupt request lines:
      0x10
    I/O memory addresses:
      0xdfa12000-0xdfa123ff
  usb1
  uhub0
```

```

    uhub4
pcib1
  I/O ports:
    0xe000-0xefff
  I/O memory addresses:
    0xdf900000-0xdf9fffff
pci33
  mfi0
    Interrupt request lines:
      0x109
    pcib1 I/O port window:
      0xe000-0xe0ff
    pcib1 memory window:
      0xdf900000-0xdf93ffff
      0xdf960000-0xdf963fff
  mfid0
pcib2
  I/O memory addresses:
    0xde000000-0xdf7fffff
pci57
  vgapci0
    pcib2 memory window:
      0xde000000-0xdeffffff
      0xdf000000-0xdf7fffff
pcib3
  I/O memory addresses:
    0xdfe00000-0xdfefffff
pci58
  bge0
    Interrupt request lines:
      0x10a
    pcib3 prefetch window:
      0xdfe30000-0xdfe3ffff
      0xdfe40000-0xdfe4ffff
      0xdfe50000-0xdfe5ffff
  miibus0
  brgphy0
  bge1
    Interrupt request lines:
      0x10b
    pcib3 prefetch window:
      0xdfe00000-0xdfe0ffff
      0xdfe10000-0xdfe1ffff
      0xdfe20000-0xdfe2ffff
  miibus1
  brgphy1
ehci1
  Interrupt request lines:
    0x17
  I/O memory addresses:
    0xdfa11000-0xdfa113ff
usb2
  uhub2
  uhub5
isab0
  isa0
  sc0
  vga0
    I/O ports:
      0x3c0-0x3df
    I/O memory addresses:
      0xa0000-0xbffff
  orm0
    I/O memory addresses:
      0xc0000-0xc7fff
      0xcf800-0xd27ff
atapci0
  Interrupt request lines:
    0x13
  I/O ports:
    0xf080-0xf08f
    0xf090-0xf09f
    0xf0a0-0xf0a3
    0xf0b0-0xf0b7
    0xf0c0-0xf0c3
    0xf0d0-0xf0d7
  ata2
  ata3
atapci1
  Interrupt request lines:
    0x13
  I/O ports:
    0xf020-0xf02f
    0xf030-0xf03f
    0xf040-0xf043
    0xf050-0xf057
    0xf060-0xf063
    0xf070-0xf077

```

```
ata4
ata5
acpi_sysresource0
atdma0
  DMA request lines:
  4
  I/O ports:
  0xc0-0xdf
hpet0
  Interrupt request lines:
  0x100
  0x101
  0x102
  0x103
  0x104
  0x105
  0x106
  0x107
  I/O memory addresses:
  0xfed00000-0xfed003ff
fpupnp0
  I/O ports:
  0xf0
acpi_sysresource1
acpi_sysresource2
atrtc0
  Interrupt request lines:
  0x8
  I/O ports:
  0x70-0x71
attimer0
  Interrupt request lines:
  0x0
  I/O ports:
  0x40-0x43
acpi_sysresource3
acpi_sysresource4
uart0
  Interrupt request lines:
  0x4
  I/O ports:
  0x3f8-0x3ff
uart1
  Interrupt request lines:
  0x3
  I/O ports:
  0x2f8-0x2ff
acpi_sysresource5
acpi_sysresource6
acpi_sysresource7
acpi_sysresource8
pci_link0
pci_link1
pci_link2
pci_link3
pci_link4
pci_link5
pci_link6
pci_link7
acpi_button0
acpi_button1
acpi_timer0
  I/O ports:
  0x1808-0x180b
```

# PCIバスデータ詳細一覧

```
hostb0@pci0:0:0:0:      class=0x060000 card=0x80381bcf chip=0x0c008086 rev=0x06 hdr=0x00
  vendor    = 'Intel Corporation'
  device    = 'Haswell DRAM Controller'
  class     = bridge
  subclass  = HOST-PCI
  cap 09[e0] = vendor (length 12) Intel cap 0 version 1
xhci0@pci0:0:20:0:     class=0x0c0330 card=0x80381bcf chip=0x8c318086 rev=0x04 hdr=0x00
  vendor    = 'Intel Corporation'
  device    = 'Lynx Point USB xHCI Host Controller'
  class     = serial bus
  subclass  = USB
  cap 01[70] = powerspec 2 supports D0 D3 current D0
  cap 05[80] = MSI supports 8 messages, 64 bit enabled with 1 message
none0@pci0:0:22:0:     class=0x078000 card=0x80381bcf chip=0x8c3a8086 rev=0x04 hdr=0x00
  vendor    = 'Intel Corporation'
  device    = 'Lynx Point MEI Controller'
  class     = simple comms
  cap 01[50] = powerspec 3 supports D0 D3 current D0
  cap 05[8c] = MSI supports 1 message, 64 bit
none1@pci0:0:22:1:     class=0x078000 card=0x80381bcf chip=0x8c3b8086 rev=0x04 hdr=0x00
  vendor    = 'Intel Corporation'
  device    = 'Lynx Point MEI Controller'
  class     = simple comms
  cap 01[50] = powerspec 3 supports D0 D3 current D0
  cap 05[8c] = MSI supports 1 message, 64 bit
ehci0@pci0:0:26:0:     class=0x0c0320 card=0x80381bcf chip=0x8c2d8086 rev=0x04 hdr=0x00
  vendor    = 'Intel Corporation'
  device    = 'Lynx Point USB Enhanced Host Controller'
  class     = serial bus
  subclass  = USB
  cap 01[50] = powerspec 2 supports D0 D3 current D0
  cap 0a[58] = EHCI Debug Port at offset 0xa0 in map 0x14
  cap 13[98] = PCI Advanced Features: FLR TP
pcib1@pci0:0:28:0:     class=0x060400 card=0x80381bcf chip=0x8c108086 rev=0xd4 hdr=0x01
  vendor    = 'Intel Corporation'
  device    = 'Lynx Point PCI Express Root Port'
  class     = bridge
  subclass  = PCI-PCI
  cap 10[40] = PCI-Express 2 root port slot max data 128(128) link x4(x4)
              speed 5.0(5.0) ASPM disabled(L0s/L1)
  cap 05[80] = MSI supports 1 message
  cap 0d[90] = PCI Bridge card=0x80381bcf
  cap 01[a0] = powerspec 3 supports D0 D3 current D0
pcib2@pci0:0:28:4:     class=0x060400 card=0x80381bcf chip=0x8c188086 rev=0xd4 hdr=0x01
  vendor    = 'Intel Corporation'
  device    = 'Lynx Point PCI Express Root Port'
  class     = bridge
  subclass  = PCI-PCI
  cap 10[40] = PCI-Express 2 root port slot max data 128(128) link x1(x1)
              speed 2.5(5.0) ASPM disabled(L0s/L1)
  cap 05[80] = MSI supports 1 message
  cap 0d[90] = PCI Bridge card=0x80381bcf
  cap 01[a0] = powerspec 3 supports D0 D3 current D0
pcib3@pci0:0:28:5:     class=0x060400 card=0x80381bcf chip=0x8c1a8086 rev=0xd4 hdr=0x01
  vendor    = 'Intel Corporation'
  device    = 'Lynx Point PCI Express Root Port'
  class     = bridge
  subclass  = PCI-PCI
  cap 10[40] = PCI-Express 2 root port slot max data 128(128) link x1(x1)
              speed 5.0(5.0) ASPM disabled(L0s/L1)
  cap 05[80] = MSI supports 1 message
  cap 0d[90] = PCI Bridge card=0x80381bcf
  cap 01[a0] = powerspec 3 supports D0 D3 current D0
ehci1@pci0:0:29:0:     class=0x0c0320 card=0x80381bcf chip=0x8c268086 rev=0x04 hdr=0x00
  vendor    = 'Intel Corporation'
  device    = 'Lynx Point USB Enhanced Host Controller'
  class     = serial bus
  subclass  = USB
  cap 01[50] = powerspec 2 supports D0 D3 current D0
  cap 0a[58] = EHCI Debug Port at offset 0xa0 in map 0x14
  cap 13[98] = PCI Advanced Features: FLR TP
isab0@pci0:0:31:0:     class=0x060100 card=0x80381bcf chip=0x8c548086 rev=0x04 hdr=0x00
  vendor    = 'Intel Corporation'
  device    = 'Lynx Point LPC Controller'
  class     = bridge
  subclass  = PCI-ISA
  cap 09[e0] = vendor (length 12) Intel cap 1 version 0
              features: AMT, 4 PCI-e x1 slots
atapci0@pci0:0:31:2:   class=0x01018f card=0x80381bcf chip=0x8c008086 rev=0x04 hdr=0x00
  vendor    = 'Intel Corporation'
  device    = 'Lynx Point 4-port SATA Controller 1 [IDE mode]'
  class     = mass storage
  subclass  = ATA
```

```

    cap 01[70] = powerspec 3 supports D0 D3 current D0
nove2@pci:0:31:3:    class=0x0c0500 card=0x80381bcf chip=0x8c228086 rev=0x04 hdr=0x00
    vendor     = 'Intel Corporation'
    device     = 'Lynx Point SMBus Controller'
    class      = serial bus
    subclass   = SMBus
atapci1@pci:0:31:5:    class=0x010185 card=0x80381bcf chip=0x8c088086 rev=0x04 hdr=0x00
    vendor     = 'Intel Corporation'
    device     = 'Lynx Point 2-port SATA Controller 2 [IDE mode]'
    class      = mass storage
    subclass   = ATA
    cap 01[70] = powerspec 3 supports D0 D3 current D0
mfi0@pci:0:33:0:0:    class=0x010400 card=0x92721000 chip=0x005b1000 rev=0x05 hdr=0x00
    vendor     = 'LSI Logic / Symbios Logic'
    device     = 'MegaRAID SAS 2208 [Thunderbolt]'
    class      = mass storage
    subclass   = RAID
    cap 01[50] = powerspec 3 supports D0 D1 D2 D3 current D0
    cap 10[68] = PCI-Express 2 endpoint max data 128(4096) FLR link x4(x8)
                speed 5.0(8.0) ASPM disabled(L0s)
    cap 03[d0] = VPD
    cap 05[a8] = MSI supports 1 message, 64 bit enabled with 1 message
    cap 11[c0] = MSI-X supports 16 messages
                Table in map 0x14[0x2000], PBA in map 0x14[0x3000]
    ecap 0001[100] = AER 2 0 fatal 0 non-fatal 1 corrected
    ecap 0019[1e0] = PCIe Sec 1 lane errors 0
    ecap 0004[1c0] = Power Budgeting 1
    ecap 0016[190] = DPA 1
    ecap 000e[148] = ARI 1
vgapci0@pci:0:57:0:0:    class=0x030000 card=0x80381bcf chip=0x0522102b rev=0x02 hdr=0x00
    vendor     = 'Matrox Electronics Systems Ltd.'
    device     = 'MGA G200e [Pilot] ServerEngines (SEP1)'
    class      = display
    subclass   = VGA
    cap 01[dc] = powerspec 2 supports D0 D3 current D0
    cap 10[e4] = PCI-Express 1 legacy endpoint max data 128(256) link x1(x1)
                speed 2.5(2.5) ASPM disabled(L0s)
    cap 05[54] = MSI supports 1 message
bge0@pci:0:58:0:0:    class=0x020000 card=0x80381bcf chip=0x165614e4 rev=0x10 hdr=0x00
    vendor     = 'Broadcom Corporation'
    device     = 'NetXtreme BCM5718 Gigabit Ethernet PCIe'
    class      = network
    subclass   = ethernet
    cap 01[48] = powerspec 3 supports D0 D3 current D0
    cap 03[50] = VPD
    cap 05[58] = MSI supports 8 messages, 64 bit enabled with 1 message
    cap 11[a0] = MSI-X supports 17 messages
                Table in map 0x20[0x0], PBA in map 0x20[0x1000]
    cap 10[ac] = PCI-Express 2 endpoint max data 128(256) FLR link x1(x1)
                speed 5.0(5.0) ASPM disabled(L1)
    ecap 0001[100] = AER 1 0 fatal 0 non-fatal 1 corrected
    ecap 0003[13c] = Serial 1 000094de80ff2596
    ecap 0004[150] = Power Budgeting 1
    ecap 0002[160] = VC 1 max VC0
bge1@pci:0:58:0:1:    class=0x020000 card=0x80381bcf chip=0x165614e4 rev=0x10 hdr=0x00
    vendor     = 'Broadcom Corporation'
    device     = 'NetXtreme BCM5718 Gigabit Ethernet PCIe'
    class      = network
    subclass   = ethernet
    cap 01[48] = powerspec 3 supports D0 D3 current D0
    cap 03[50] = VPD
    cap 05[58] = MSI supports 8 messages, 64 bit enabled with 1 message
    cap 11[a0] = MSI-X supports 17 messages
                Table in map 0x20[0x0], PBA in map 0x20[0x1000]
    cap 10[ac] = PCI-Express 2 endpoint max data 128(256) FLR link x1(x1)
                speed 5.0(5.0) ASPM disabled(L1)
    ecap 0001[100] = AER 1 0 fatal 0 non-fatal 1 corrected
    ecap 0003[13c] = Serial 1 000094de80ff2597
    ecap 0004[150] = Power Budgeting 1
    ecap 0002[160] = VC 1 max VC0

```

# ACPI電源管理データ詳細一覧

```
RSD PTR: OEM=AMI, ACPI_Rev=2.0x (2)
XSDT=0xcc7fa090, length=36, cksum=97
XSDT: Length=156, Revision=1, Checksum=132,
OEMID=AMI, OEM Table ID=06A0, OEM Revision=0x1072009,
Creator ID=AMI, Creator Revision=0x10013
Entries={ 0xcc8087e8, 0xcc8088f8, 0xcc808960, 0xcc8089a8, 0xcc808f30, 0xcc809ab0, 0xcc809d90, 0xcc80a0d8, 0xcc80a118,
0xcc80a1d8, 0xcc80a210, 0xcc80a6a8, 0xcc810208, 0xcc810408, 0xcc810458 }
FACP: Length=268, Revision=5, Checksum=135,
OEMID=AMI, OEM Table ID=06A0, OEM Revision=0x1072009,
Creator ID=AMI, Creator Revision=0x10013
FACS=0xccfae080, DSDT=0xcc7fa1b8
INT_MODEL=APIC
Preferred_PM_Profile=Desktop (1)
SCI_INT=9
SMI_CMD=0xb2, ACPI_ENABLE=0xa0, ACPI_DISABLE=0xa1, S4BIOS_REQ=0x0
PSTATE_CNT=0x0
PM1a_EVT_BLK=0x1800-0x1803
PM1a_CNT_BLK=0x1804-0x1805
PM2_CNT_BLK=0x1850-0x1850
PM_TMR_BLK=0x1808-0x180b
GPE0_BLK=0x1820-0x182f
P_LVL2_LAT=101 us, P_LVL3_LAT=1001 us
FLUSH_SIZE=1024, FLUSH_STRIDE=16
DUTY_OFFSET=0, DUTY_WIDTH=0
DAY_ALARM=13, MON_ALARM=0, CENTURY=50
IAPC_BOOT_ARCH={NO_ASPM}
Flags={WBINVD, C1_SUPPORTED, C2_MP_SUPPORTED, SLEEP_BUTTON, S4_RTC_WAKE, RESET_REGISTER, PLATFORM_CLOCK, S4_RTC_VALID, REMOTE_POWER_ON}
RESET_REG=0x539:0[8] (IO), RESET_VALUE=0xf7
FACS: Length=64, HwSig=0x00000012, FirmWakeVec=0x00000000
GlobalLock=
Flags=
Version=2
DSDT: Length=58925, Revision=2, Checksum=146,
OEMID=AMI, OEM Table ID=06A0, OEM Revision=0x0,
Creator ID=INTL, Creator Revision=0x20091112
APIC: Length=98, Revision=3, Checksum=163,
OEMID=AMI, OEM Table ID=06A0, OEM Revision=0x1072009,
Creator ID=AMI, Creator Revision=0x10013
Local APIC ADDR=0xfe000000
Flags={PC-AT}
Type=Local APIC
ACPI CPU=1
Flags={ENABLED}
APIC ID=0
Type=Local APIC
ACPI CPU=2
Flags={ENABLED}
APIC ID=2
Type=IO APIC
APIC ID=8
INT BASE=0
ADDR=0x00000000fec00000
Type=INT Override
BUS=0
IRQ=0
INTR=2
Flags={Polarity=conforming, Trigger=conforming}
Type=INT Override
BUS=0
IRQ=9
INTR=9
Flags={Polarity=active-hi, Trigger=level}
Type=Local APIC NMI
ACPI CPU=ALL
LINT Pin=1
Flags={Polarity=active-hi, Trigger=edge}
FPDT: Length=68, Revision=1, Checksum=28,
OEMID=AMI, OEM Table ID=06A0, OEM Revision=0x1072009,
Creator ID=AMI, Creator Revision=0x10013
SSDT: Length=1411, Revision=1, Checksum=30,
OEMID=PmRef, OEM Table ID=Cpu0Ist, OEM Revision=0x3000,
Creator ID=INTL, Creator Revision=0x20051117
SSDT: Length=2937, Revision=1, Checksum=151,
OEMID=CpuRef, OEM Table ID=CpuSsdT, OEM Revision=0x3000,
Creator ID=INTL, Creator Revision=0x20051117
SSDT: Length=734, Revision=1, Checksum=191,
OEMID=PmRef, OEM Table ID=Cpu0Tst, OEM Revision=0x3000,
Creator ID=INTL, Creator Revision=0x20051117
SSDT: Length=840, Revision=1, Checksum=74,
OEMID=PmRef, OEM Table ID=ApTst, OEM Revision=0x3000,
Creator ID=INTL, Creator Revision=0x20051117
MCFG: Length=60, Revision=1, Checksum=55,
OEMID=AMI, OEM Table ID=06A0, OEM Revision=0x1072009,
```



Creator ID=MSFT, Creator Revision=0x97  
Base Address=0x00000000e0000000  
Segment Group=0x0000  
Start Bus=0  
End Bus=255  
PRAD: Length=190, Revision=2, Checksum=119,  
OEMID=PRADID, OEM Table ID=PRADTID, OEM Revision=0x1,  
Creator ID=MSFT, Creator Revision=0x3000001  
HPET: Length=56, Revision=1, Checksum=236,  
OEMID=AMI, OEM Table ID=06A0, OEM Revision=0x1072009,  
Creator ID=AMI., Creator Revision=0x5  
HPET Number=0  
ADDR=0xfed00000:0[64] (Memory) HW Rev=0x1  
Comparators=7  
Counter Size=1  
Legacy IRQ routing capable={TRUE}  
PCI Vendor ID=0x8086  
Minimal Tick=14318  
SSDT: Length=1173, Revision=1, Checksum=1,  
OEMID=IdeRef, OEM Table ID=IdeTable, OEM Revision=0x1000,  
Creator ID=INTL, Creator Revision=0x20120711  
SSDT: Length=23390, Revision=1, Checksum=165,  
OEMID=SaSsdT, OEM Table ID=SaSsdT, OEM Revision=0x3000,  
Creator ID=INTL, Creator Revision=0x20120711  
SSDT: Length=505, Revision=1, Checksum=51,  
OEMID=SgRef, OEM Table ID=SgPeg, OEM Revision=0x1000,  
Creator ID=INTL, Creator Revision=0x20120711  
SPCR: Length=80, Revision=1, Checksum=99,  
OEMID=A M I, OEM Table ID=APTIO4, OEM Revision=0x1072009,  
Creator ID=AMI., Creator Revision=0x5  
BERT: Length=48, Revision=1, Checksum=44,  
OEMID=AMI, OEM Table ID=AMI BERT, OEM Revision=0x0,  
Creator ID=AMI, Creator Revision=0x10013

# ネットワークインターフェースデータ詳細一覧

```
bge0: flags=8843<UP,BROADCAST,RUNNING,SIMPLEX,MULTICAST> metric 0 mtu 1500
options=c019b<RXCSUM, TXCSUM, VLAN_MTU, VLAN_HWTAGGING, VLAN_HWCSUM, TS04, VLAN_HWTSO, LINKSTATE>
ether 94:de:80:ff:25:96
inet 192.168.1.39 netmask 0xfffff00 broadcast 192.168.1.255
nd6 options=29<PERFORMNUD,IFDISABLED,AUTO_LINKLOCAL>
media: Ethernet autoselect (1000baseT <full-duplex,master>)
status: active
bge1: flags=8802<BROADCAST,SIMPLEX,MULTICAST> metric 0 mtu 1500
options=c019b<RXCSUM, TXCSUM, VLAN_MTU, VLAN_HWTAGGING, VLAN_HWCSUM, TS04, VLAN_HWTSO, LINKSTATE>
ether 94:de:80:ff:25:97
nd6 options=29<PERFORMNUD,IFDISABLED,AUTO_LINKLOCAL>
media: Ethernet autoselect
lo0: flags=8049<UP,LOOPBACK,RUNNING,MULTICAST> metric 0 mtu 16384
options=600003<RXCSUM, TXCSUM, RXCSUM_IPV6, TXCSUM_IPV6>
inet6 ::1 prefixlen 128
inet6 fe80::1%lo0 prefixlen 64 scopeid 0x3
inet 127.0.0.1 netmask 0xff000000
nd6 options=21<PERFORMNUD,AUTO_LINKLOCAL>
```

# デバイス認識詳細一覧

2	1 dr-xr-xr-x	9 root	wheel	512 Mar 4 23:48 /dev
99	0 lrwxr-xr-x	1 root	wheel	12 Mar 4 14:49 /dev/log ->
/var/run/log				
116	0 lrwxr-xr-x	1 root	wheel	12 Mar 4 23:49 /dev/dumpdev ->
/dev/mfid0p3				
3	0 crw-----	1 root	wheel	0x3 Mar 4 14:49 /dev/console
4	0 crw-r-----	1 root	operator	0x4 Mar 4 14:48 /dev/geom.ctl
5	0 cr--r--r--	1 root	wheel	0x5 Mar 4 14:48 /dev/sndstat
6	0 crw-----	1 root	wheel	0x6 Mar 4 14:48 /dev/devctl
7	0 crw-----	1 root	wheel	0x7 Mar 4 14:48 /dev/kbdmux0
8	0 lrwxr-xr-x	1 root	wheel	7 Mar 4 14:48 /dev/kbd1 ->
kbdmux0				
9	0 crw-r-----	1 root	kmem	0x9 Mar 4 14:48 /dev/mem
10	0 crw-r-----	1 root	kmem	0xa Mar 4 14:48 /dev/kmem
11	0 crw-rw-rw-	1 root	wheel	0xb Mar 4 14:48 /dev/tty
12	0 crw-----	1 root	wheel	0xc Mar 4 14:49 /dev/bpf
13	0 lrwxr-xr-x	1 root	wheel	3 Mar 4 14:48 /dev/bpf0 -> bpf
14	0 crw-----	1 root	wheel	0xe Mar 4 14:48 /dev/fido
15	0 crw-rw-rw-	1 root	wheel	0xf Mar 4 14:49 /dev/null
16	0 crw-rw-rw-	1 root	wheel	0x10 Mar 4 14:48 /dev/zero
17	0 crw-r--r--	1 root	wheel	0x11 Mar 4 14:48 /dev/pci
18	0 crw-----	1 root	kmem	0x12 Mar 4 14:48 /dev/nfslock
19	0 crw-----	1 root	kmem	0x13 Mar 4 14:48 /dev/audit
20	0 crw-rw-rw-	1 root	wheel	0x14 Mar 4 23:49 /dev/random
21	0 lrwxr-xr-x	1 root	wheel	6 Mar 4 14:48 /dev/urandom ->
random				
112	1 dr-xr-xr-x	2 root	wheel	512 Mar 4 14:48 /dev/fd
22	0 crw-rw-rw-	1 root	wheel	0x16 Mar 4 14:48 /dev/fd/0
24	0 crw-rw-rw-	1 root	wheel	0x18 Mar 4 14:48 /dev/fd/1
26	0 crw-rw-rw-	1 root	wheel	0x1a Mar 4 14:48 /dev/fd/2
23	0 lrwxr-xr-x	1 root	wheel	4 Mar 4 14:48 /dev/stdin ->
fd/0				
25	0 lrwxr-xr-x	1 root	wheel	4 Mar 4 14:48 /dev/stdout ->
fd/1				
27	0 lrwxr-xr-x	1 root	wheel	4 Mar 4 14:48 /dev/stderr ->
fd/2				
28	0 crw-----	1 root	wheel	0x1c Mar 4 14:48 /dev/io
29	0 crw-rw-rw-	1 root	wheel	0x1d Mar 4 14:48 /dev/midistat
30	0 crw-----	1 root	wheel	0x1e Mar 4 14:48 /dev/synmouse
31	0 crw-----	1 root	wheel	0x1f Mar 4 14:48 /dev/klog
32	0 crw-r--r--	1 root	wheel	0x20 Mar 4 14:48 /dev/acpi
33	0 crw-rw----	1 root	operator	0x21 Mar 4 14:48 /dev/apmctl
34	0 crw-rw-r--	1 root	operator	0x22 Mar 4 14:48 /dev/apm
35	0 crw-r-----	1 root	operator	0x23 Mar 4 14:48 /dev/mfi0
36	0 lrwxr-xr-x	1 root	wheel	4 Mar 4 14:48
/dev/megaraid_sas_ioctl_node -> mfi0				
37	0 crw-----	1 root	wheel	0x25 Mar 4 14:48 /dev/ttyu0
38	0 crw-----	1 root	wheel	0x26 Mar 4 14:48 /dev/ttyu0.init
39	0 crw-----	1 root	wheel	0x27 Mar 4 14:48 /dev/ttyu0.lock
40	0 crw-rw----	1 uucp	dialer	0x28 Mar 4 14:48 /dev/cuau0
41	0 crw-rw----	1 uucp	dialer	0x29 Mar 4 14:48 /dev/cuau0.init
42	0 crw-rw----	1 uucp	dialer	0x2a Mar 4 14:48 /dev/cuau0.lock
43	0 crw-----	1 root	wheel	0x2b Mar 4 14:48 /dev/ttyu1
44	0 crw-----	1 root	wheel	0x2c Mar 4 14:48 /dev/ttyu1.init
45	0 crw-----	1 root	wheel	0x2d Mar 4 14:48 /dev/ttyu1.lock
46	0 crw-rw----	1 uucp	dialer	0x2e Mar 4 14:48 /dev/cuau1
47	0 crw-rw----	1 uucp	dialer	0x2f Mar 4 14:48 /dev/cuau1.init
48	0 crw-rw----	1 uucp	dialer	0x30 Mar 4 14:48 /dev/cuau1.lock
49	0 crw-----	1 root	tty	0x31 Mar 4 14:49 /dev/ttyv0
50	0 crw-----	1 root	wheel	0x32 Mar 4 14:49 /dev/ttyv1
51	0 crw-----	1 root	wheel	0x33 Mar 4 14:49 /dev/ttyv2
52	0 crw-----	1 root	wheel	0x34 Mar 4 14:49 /dev/ttyv3
53	0 crw-----	1 root	wheel	0x35 Mar 4 14:49 /dev/ttyv4
54	0 crw-----	1 root	wheel	0x36 Mar 4 14:49 /dev/ttyv5
55	0 crw-----	1 root	wheel	0x37 Mar 4 14:49 /dev/ttyv6
56	0 crw-----	1 root	wheel	0x38 Mar 4 14:49 /dev/ttyv7
57	0 crw-----	1 root	wheel	0x39 Mar 4 14:48 /dev/ttyv8
58	0 crw-----	1 root	wheel	0x3a Mar 4 14:48 /dev/ttyv9
59	0 crw-----	1 root	wheel	0x3b Mar 4 14:48 /dev/ttyva
60	0 crw-----	1 root	wheel	0x3c Mar 4 14:48 /dev/ttyvb
61	0 crw-----	1 root	wheel	0x3d Mar 4 14:48 /dev/ttyvc
62	0 crw-----	1 root	wheel	0x3e Mar 4 14:48 /dev/ttyvd
63	0 crw-----	1 root	wheel	0x3f Mar 4 14:48 /dev/ttyve
64	0 crw-----	1 root	wheel	0x40 Mar 4 14:48 /dev/ttyvf
65	0 crw-----	1 root	wheel	0x41 Mar 4 14:48 /dev/consolectl
66	0 crw-----	1 root	wheel	0x42 Mar 4 14:48 /dev/mdctl
113	1 dr-xr-xr-x	2 root	wheel	512 Mar 4 14:48 /dev/usb
67	0 crw-----	1 root	operator	0x43 Mar 4 14:48 /dev/usb/0.1.0
74	0 crw-----	1 root	operator	0x4a Mar 4 14:48 /dev/usb/1.1.0
76	0 crw-----	1 root	operator	0x4c Mar 4 14:48 /dev/usb/2.1.0
78	0 crw-----	1 root	operator	0x4e Mar 4 14:48 /dev/usb/1.1.1
79	0 crw-----	1 root	operator	0x4f Mar 4 14:48 /dev/usb/0.1.1
80	0 crw-----	1 root	operator	0x50 Mar 4 14:48 /dev/usb/2.1.1

82	0 crw-----	1 root	operator	0x52 Mar 4 14:48	/dev/usb/l1.2.0
84	0 crw-----	1 root	operator	0x54 Mar 4 14:48	/dev/usb/l1.2.1
85	0 crw-----	1 root	operator	0x55 Mar 4 14:48	/dev/usb/l1.2.0
87	0 crw-----	1 root	operator	0x57 Mar 4 14:48	/dev/usb/l2.2.0
89	0 crw-----	1 root	operator	0x59 Mar 4 14:48	/dev/usb/l1.2.1
90	0 crw-----	1 root	operator	0x5a Mar 4 14:48	/dev/usb/l2.2.1
101	0 crw-----	1 root	operator	0x65 Mar 4 14:48	/dev/usb/l0.3.0
103	0 crw-----	1 root	operator	0x67 Mar 4 14:48	/dev/usb/l0.3.1
106	0 crw-----	1 root	operator	0x6a Mar 4 14:48	/dev/usb/l0.4.0
108	0 crw-----	1 root	operator	0x6c Mar 4 14:48	/dev/usb/l0.4.1
109	0 crw-----	1 root	operator	0x6d Mar 4 14:48	/dev/usb/l0.4.2
100	0 crw-----	1 root	operator	0x64 Mar 4 14:49	/dev/usb/l0.5.0
117	0 crw-----	1 root	operator	0x75 Mar 4 14:49	/dev/usb/l0.5.1
118	0 crw-----	1 root	operator	0x76 Mar 4 14:49	/dev/usb/l0.5.2
68	0 lrwxr-xr-x	1 root	wheel	9 Mar 4 14:48	/dev/ugen0.1 ->
usb/l0.1.0					
69	0 crw-----	1 root	wheel	0x45 Mar 4 14:48	/dev/ufssuspend
72	0 crw-r--r--	1 root	operator	0x48 Mar 4 14:48	/dev/usb/l1
73	0 crw-----	1 root	operator	0x49 Mar 4 14:48	/dev/xpt0
75	0 lrwxr-xr-x	1 root	wheel	9 Mar 4 14:48	/dev/ugen1.1 ->
usb/l1.1.0					
77	0 lrwxr-xr-x	1 root	wheel	9 Mar 4 14:48	/dev/ugen2.1 ->
usb/l2.1.0					
81	0 cr--r--r--	1 root	wheel	0x51 Mar 4 14:48	/dev/devstat
83	0 lrwxr-xr-x	1 root	wheel	9 Mar 4 14:48	/dev/ugen0.3 ->
usb/l0.2.0					
86	0 lrwxr-xr-x	1 root	wheel	9 Mar 4 14:48	/dev/ugen1.2 ->
usb/l1.2.0					
88	0 lrwxr-xr-x	1 root	wheel	9 Mar 4 14:48	/dev/ugen2.2 ->
usb/l2.2.0					
91	0 crw-----	1 root	operator	0x5b Mar 4 14:48	/dev/pass0
92	0 crw-r-----	1 root	operator	0x5c Mar 4 14:48	/dev/mfid0
93	0 crw-r-----	1 root	operator	0x5d Mar 4 14:48	/dev/mfid0p1
94	0 crw-r-----	1 root	operator	0x5e Mar 4 23:48	/dev/mfid0p2
95	0 crw-r-----	1 root	operator	0x5f Mar 4 23:48	/dev/mfid0p3
96	0 crw-r-----	1 root	operator	0x60 Mar 4 14:48	/dev/cd0
114	1 dr-xr-xr-x	2 root	wheel	512 Mar 4 14:48	/dev/gptid
97	0 crw-r-----	1 root	operator	0x61 Mar 4 14:48	/dev/gptid
/0f204933-c27d-11e4-9d9a-94de80ff2596					
102	0 lrwxr-xr-x	1 root	wheel	9 Mar 4 14:48	/dev/ugen0.3 ->
usb/l0.3.0					
104	0 crw-----	1 root	wheel	0x68 Mar 4 14:48	/dev/ukbd0
105	0 lrwxr-xr-x	1 root	wheel	5 Mar 4 14:48	/dev/kbd0 ->
ukbd0					
107	0 lrwxr-xr-x	1 root	wheel	9 Mar 4 14:48	/dev/ugen0.4 ->
usb/l0.4.0					
110	0 crw-----	1 root	wheel	0x6e Mar 4 14:48	/dev/ukbd1
111	0 lrwxr-xr-x	1 root	wheel	5 Mar 4 14:48	/dev/kbd2 ->
ukbd1					
98	0 crw-r--r--	1 root	operator	0x62 Mar 4 14:49	/dev/ums0
115	0 lrwxr-xr-x	1 root	wheel	9 Mar 4 14:49	/dev/ugen0.5 ->
usb/l0.5.0					
119	0 crw-----	1 root	operator	0x77 Mar 4 14:49	/dev/pass1
120	0 crw-r-----	1 root	operator	0x78 Mar 4 14:49	/dev/da0
122	0 crw-r-----	1 root	operator	0x7a Mar 4 14:49	/dev/da0s1

# 更新履歷

# 更新履歴

- 2015年03月07日 FreeBSD動作検証レポート2015年3月4日版作成

# FreeBSD動作検証レポート

## T110g-E / 10.1-RELEASE

### 対象ハードウェア

maker:NEC, product:Express5800/R110g-1E  
[N8100-2174Y], serial:4800112, version:FR1.0

### 対象OSバージョン

FreeBSD 10.1-RELEASE #0 r274401: Tue Nov 11  
21:02:49 UTC 2014

2015年3月4日版

BSDコンサルティング株式会社

本文書の無断での引用・転載を禁止する

Contact us: [info@bsdconsulting.co.jp](mailto:info@bsdconsulting.co.jp)

Copyright (c) 2015 BSD Consulting, Inc. All Rights Reserved.