

FreeBSD動作検証レポート

R110g-1E / 9.3-RELEASE

対象ハードウェア

maker:NEC, product:Express5800/R110g-1E
[N8100-2174Y], serial:4800112, version:FR1.0

対象OSバージョン

FreeBSD 9.3-RELEASE #0: Tue Nov 24 17:20:35
JST 2015

2015年11月24日版

BSDコンサルティング株式会社

本文書の無断での引用・転載を禁止する

Contact us: info@bsdconsulting.co.jp

Copyright (c) 2015 BSD Consulting, Inc. All Rights Reserved.

動作検証レポート

要約

ハードウェア基本情報

製品UUID	00ebd656-8e31-e411-8001-94de80f25c3
製品データ	maker:NEC, product:Express5800/R110g-1E [N8100-2174Y], serial:4800112, version:FR1.0
筐体データ	maker:NEC, serial:01, tag:_____, version:856-180006-502
CPU	Intel(R) Pentium(R) CPU G3240 @ 3.10GHz
MEMORY	8388608[KB]
BIOS	reldate:05/22/2014, vendor:American Megatrends Inc., version:4.6.0203
ACPI	oem:AMI , revision:2, rsdp:984208, rsdt:0xcc7f3028, xsdt:0x00000000cc7f3090
OS	FreeBSD 9.3-RELEASE #0: Tue Nov 24 17:20:35 JST 2015

基礎性能データ

メモリアクセス速度	27.560 GBi/sec
IPv4スタック処理速度	299.623 MBi/sec
IPv6スタック処理速度	248.593 MBi/sec

動作検証要約

FreeBSD 9.3-RELEASE #0: Tue Nov 24 17:20:35 JST 2015は検証対象ハードウェア「maker:NEC, product:Express5800/R110g-1E [N8100-2174Y], serial:4800112, version:FR1.0」において、mrsas(4)ドライバを利用することで正常に動作する。

FreeBSD 9.3-RELEASEでは、デフォルトではLSI MegaRAID SAS 2208をmfi(4)ドライバで使用する。mfi(4)ドライバでストレージを認識、操作することは可能だが高負荷時に同アダプタが原因とみられるパニックが発生することがある。このため、同ハードウェアを使用する場合、以下のようにカーネルからmfi(4)を削除し、mrsas(4)を使用するよう設定し、カーネルの再構築を行う必要がある。なお、FreeBSD 10.1-RELEASE以降からmrsas(4)を使用する場合は、loader.conf(5)にmrsas(4)を有効にする設定を記述することでカーネルの再構築をせずに利用することができる。

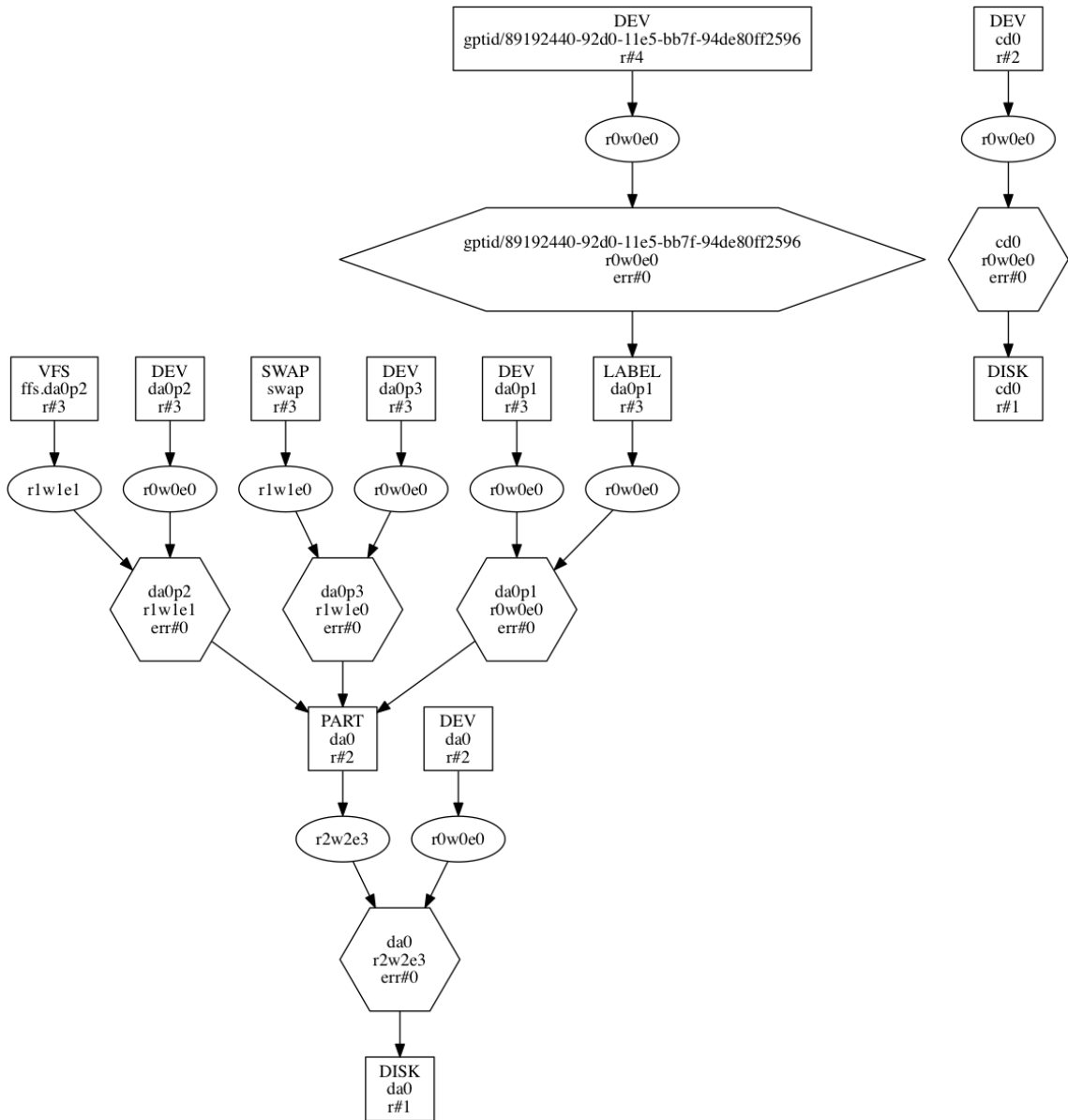
```
device mrsas
# device mfi
```

論理パーティションの表示や名称は今後変更される可能性もあり、上記とは違う名前になる可能性もある。アップグレード対象のバージョンのリリースノートを参考にするとともに、適切な名称で/etc/fstabを書き換えるなどしてアップグレードを実施

する必要がある。

FreeBSDプロジェクトは、FreeBSD 11.0-RELEASE以降はブランチでの最低5年間サポートの開始を予定している。FreeBSD 11.0-RELEASE以降は、ブランチにおける最新のリリースバージョンのみがサポートの対象となる。このため、FreeBSD 11.0-RELEASE以降はマイナーアップグレードごとにアップグレードを実施し、FreeBSD 11.1-RELEASE、FreeBSD 11.2-RELEASEへとバージョンアップを実施する必要がある。カーネルをカスタマイズしない限り、`freebsd-update(8)`コマンドを使ってバイナリアップデートを実施できる。

検証機GEOMツリー



高負荷耐久試験

高負荷耐久試験

試験結果

検証対象ハードウェア(maker:NEC, product:Express5800/R110g-1E [N8100-2174Y], serial:4800112, version:FR1.0)は24時間高負荷耐久試験をクリアしており、所定の負荷に対して安定して動作するものとみられる。

不正処理高負荷耐久試験	クリア
通常ファイル作成高負荷耐久試験	クリア
FIFOファイル作成高負荷耐久試験	クリア
ディレクトリ作成高負荷耐久試験	クリア
ハードリンクファイル作成高負荷耐久試験	クリア
シンボリックリンクファイル作成高負荷耐久試験	クリア
ファイルロック機構高負荷耐久試験	クリア
メモリファイルマッピング機能高負荷耐久試験	クリア
ファイルシステム階層構造トラバース高負荷耐久試験	クリア
ファイルシステムパス解析高負荷耐久試験	クリア
ファイルシステムパスリネーム高負荷耐久試験	クリア
ファイルシステムライト・キャッシュリード高負荷耐久試験	クリア
ファイルシステムスワップ高負荷耐久試験	クリア
スレッド機構高負荷耐久試験	クリア
間接システムコール高負荷耐久試験	クリア
擬似ターミナル機構高負荷耐久試験	クリア
共有メモリ機構高負荷耐久試験	クリア
ネットワークソケット高負荷耐久試験	クリア
TCPスタック高負荷耐久試験	クリア
UDPスタック高負荷耐久試験	クリア

動作検証レポート

動作検証レポート

ACPI認識データ

ACPI_APIC	Revision=3, OEMID=AMI, OEM_Table ID=06A0, OEM_Revision=0x1072009, Creator_ID=AMI, Creator_Revision=0x10013
ACPI_BERT	Revision=1, OEMID=AMI, OEM_Table ID=AMI BERT, OEM_Revision=0x0, Creator_ID=AMI, Creator_Revision=0x10013
ACPI_DSDT	Revision=2, OEMID=AMI, OEM_Table ID=06A0, OEM_Revision=0x0, Creator_ID=INTL, Creator_Revision=0x20091112
ACPI_FACP	Revision=5, OEMID=AMI, OEM_Table ID=06A0, OEM_Revision=0x1072009, Creator_ID=AMI, Creator_Revision=0x10013, FACS=0xccfa7080, DSDT=0xcc7f31b8, SMI_CMD=0xb2, ACPI_ENABLE=0xa0, ACPI_DISABLE=0xa1, S4BIOS_REQ=0x0, FLUSH_STRIDE=16, DUTY_WIDTH=0, RESET_VALUE=0xf7
ACPI_FACS	HwSig=0x00000025, Firm_Wake_Vec=0x00000000
ACPI_FPDT	Revision=1, OEMID=AMI, OEM_Table ID=06A0, OEM_Revision=0x1072009, Creator_ID=AMI, Creator_Revision=0x10013
ACPI_HPET	Revision=1, OEMID=AMI, OEM_Table ID=06A0, OEM_Revision=0x1072009, Creator_ID=AMI, Creator_Revision=0x5
ACPI_MCFG	Revision=1, OEMID=AMI, OEM_Table ID=06A0, OEM_Revision=0x1072009, Creator_ID=MSFT, Creator_Revision=0x97
ACPI_PRAD	Revision=2, OEMID=PRADID, OEM_Table ID=PRADTID, OEM_Revision=0x1, Creator_ID=MSFT, Creator_Revision=0x3000001
ACPI_RSD_PTR	OEM=AMI, ACPI_Rev=2.0x (2), XSDT=0xcc7f3090
ACPI_SPCR	Revision=1, OEMID=A_M I, OEM_Table ID=APTIO4, OEM_Revision=0x1072009, Creator_ID=AMI, Creator_Revision=0x5
ACPI_XSDT	Revision=1, OEMID=AMI, OEM_Table ID=06A0, OEM_Revision=0x1072009, Creator_ID=AMI, Creator_Revision=0x10013
ACPI_SSDT_1	Length=1411, Revision=1, Checksum=30, OEMID=PmRef, OEM_Table ID=Cpu0Ist, OEM_Revision=0x3000, Creator_ID=INTL, Creator_Revision=0x20051117
ACPI_SSDT_2	Length=2937, Revision=1, Checksum=202, OEMID=CpuRef, OEM_Table ID=CpuSsd, OEM_Revision=0x3000, Creator_ID=INTL, Creator_Revision=0x20051117
ACPI_SSDT_3	Length=734, Revision=1, Checksum=191, OEMID=PmRef, OEM_Table ID=Cpu0Tst, OEM_Revision=0x3000, Creator_ID=INTL, Creator_Revision=0x20051117
ACPI_SSDT_4	Length=840, Revision=1, Checksum=74, OEMID=PmRef, OEM_Table ID=ApTst, OEM_Revision=0x3000, Creator_ID=INTL, Creator_Revision=0x20051117
ACPI_SSDT_5	Length=1173, Revision=1, Checksum=1, OEMID=IdeRef, OEM_Table ID=IdeTable, OEM_Revision=0x1000, Creator_ID=INTL, Creator_Revision=0x20120711
ACPI_SSDT_6	Length=23390, Revision=1, Checksum=21, OEMID=SaSsd, OEM_Table ID=SaSsd, OEM_Revision=0x3000, Creator_ID=INTL, Creator_Revision=0x20120711
ACPI_SSDT_7	Length=505, Revision=1, Checksum=51, OEMID=SgRef, OEM_Table ID=SgPeg, OEM_Revision=0x1000, Creator_ID=INTL, Creator_Revision=0x20120711

MFIデバイス認識データ

アダプタ	該当データなし
------	---------

ドライバ	該当データなし
ボリューム	該当データなし
コンフィグ	該当データなし

※ 対象となるデバイスがmfi(4)ドライバを使用しないストレージ構成の場合、当項目は該当データなし。

MPTデバイス認識データ

アダプタ	該当データなし
ドライバ	該当データなし
ボリューム	該当データなし
コンフィグ	該当データなし

※ 対象となるデバイスがmpt(4)ドライバを使用しないストレージ構成の場合、当項目は該当データなし。

NIC認識データ

NIC	bge0, bge1
bge0	flags=8843<UP,BROADCAST,RUNNING,SIMPLEX,MULTICAST>, metric=0, mtu=1500, options=c019b<RXCSUM, TXCSUM, VLAN_MTU, VLAN_HWTAGGING, VLAN_HWCSUM, TSO4, VLAN_HWTSO, LINKSTATE>, ether=94:de:80:ff:25:96, inet=192.168.10.127 netmask 0xfffff00 broadcast 192.168.10.255, nd6_options=29<PERFORMNUD,IFDISABLED,AUTO_LINKLOCAL>, media=Ethernet autoselect (1000baseT <full-duplex>), status=active
bge1	flags=8802<BROADCAST,SIMPLEX,MULTICAST>, metric=0, mtu=1500, options=c019b<RXCSUM, TXCSUM, VLAN_MTU, VLAN_HWTAGGING, VLAN_HWCSUM, TSO4, VLAN_HWTSO, LINKSTATE>, ether=94:de:80:ff:25:97, nd6_options=29<PERFORMNUD,IFDISABLED,AUTO_LINKLOCAL>, media=Ethernet autoselect

カーネルデバイス認識データ

acpi	audit	bpf	bpf0(bpf)
cd0	console	consolectl	ctty
cuau0	cuau0.init	cuau0.lock	cuau1
cuau1.init	cuau1.lock	da0	da0p1
da0p2	da0p3	devctl	devstat
dumpdev(da0p3)	fd	fd/0	fd/1
fd/2	fido	geom.ctl	gptid
gptid/89192440-92d0-11e5-bb7f-94de80ff2596	io	kbd0(ukbd0)	kbd1(kbdrmux0)
kbd2(ukbd1)	kbdrmux0	klog	kmem
log(/var/run/log)	mdctl	mem	midistat
mrsas0	nfslock	null	pass0
pass1	pci	ptmx	random
sndstat	stderr(fd/2)	stdin(fd/0)	stdout(fd/1)
sysmouse	ttyu0	ttyu0.init	ttyu0.lock
ttyu1	ttyu1.init	ttyu1.lock	ttyv0
ttyv1	ttyv2	ttyv3	ttyv4
ttyv5	ttyv6	ttyv7	ttyv8
ttyv9	ttyva	ttyvb	ttyvc
ttyvd	ttyve	ttyvf	ufssuspend
ugen0.1(usb/0.1.0)	ugen1.1(usb/1.1.0)	ugen1.2(usb/1.2.0)	ugen1.3(usb/1.3.0)
ugen1.4(usb/1.4.0)	ugen1.5(usb/1.5.0)	ugen2.1(usb/2.1.0)	ugen2.2(usb/2.2.0)
ukbd0	ukbd1	urandom(random)	usb
usb/0.1.0	usb/0.1.1	usb/1.1.0	usb/1.1.1
usb/1.2.0	usb/1.2.1	usb/1.3.0	usb/1.3.1
usb/1.4.0	usb/1.4.1	usb/1.5.0	usb/1.5.1
usb/1.5.2	usb/2.1.0	usb/2.1.1	usb/2.2.0
usb/2.2.1	usbctl	xpt0	zero

PCI認識データ

1	pci0:0:0:0(hostb0), class=HOST-PCI, vendor='Intel Corporation', device=
2	pci0:0:20:0(xhci0), class=USB, vendor='Intel Corporation', device=
3	pci0:0:22:0(none0), class=simple comms, vendor='Intel Corporation', device=
4	pci0:0:22:1(none1), class=simple comms, vendor='Intel Corporation', device=
5	pci0:0:26:0(ehci0), class=USB, vendor='Intel Corporation', device=
6	pci0:0:28:0(pci1), class=PCI-PCI, vendor='Intel Corporation', device=
7	pci0:0:28:4(pci2), class=PCI-PCI, vendor='Intel Corporation', device=
8	pci0:0:28:5(pci3), class=PCI-PCI, vendor='Intel Corporation', device=
9	pci0:0:29:0(ehci1), class=USB, vendor='Intel Corporation', device=
10	pci0:0:31:0(isab0), class=PCI-ISA, vendor='Intel Corporation', device=
11	pci0:0:31:2(atapci0), class=ATA, vendor='Intel Corporation', device=
12	pci0:0:31:3(none2), class=SMBus, vendor='Intel Corporation', device=
13	pci0:0:31:5(atapci1), class=ATA, vendor='Intel Corporation', device=
14	pci0:33:0:0(mrsas0), class=RAID, vendor='LSI Logic / Symbios Logic', device='MegaRAID SAS 2208 [Thunderbolt]'
15	pci0:57:0:0(vgapci0), class=VGA, vendor='Matrox Graphics, Inc.', device='MGA G200e [Pilot] ServerEngines (SEP1)'
16	pci0:58:0:0(bge0), class=ethernet, vendor='Broadcom Corporation', device='NetXtreme BCM5718 Gigabit Ethernet PCIe'
17	pci0:58:0:1(bge1), class=ethernet, vendor='Broadcom Corporation', device='NetXtreme BCM5718 Gigabit Ethernet PCIe'

メモリ認識データ

1	0x0/0x10000 BIOS write-back fixed-base fixed-length set-by-firmware active
2	0x10000/0x10000 BIOS write-back fixed-base fixed-length set-by-firmware active
3	0x20000/0x10000 BIOS write-back fixed-base fixed-length set-by-firmware active
4	0x30000/0x10000 BIOS write-back fixed-base fixed-length set-by-firmware active
5	0x40000/0x10000 BIOS write-back fixed-base fixed-length set-by-firmware active
6	0x50000/0x10000 BIOS write-back fixed-base fixed-length set-by-firmware active
7	0x60000/0x10000 BIOS write-back fixed-base fixed-length set-by-firmware active
8	0x70000/0x10000 BIOS write-back fixed-base fixed-length set-by-firmware active
9	0x80000/0x4000 BIOS write-back fixed-base fixed-length set-by-firmware active
10	0x84000/0x4000 BIOS write-back fixed-base fixed-length set-by-firmware active
11	0x88000/0x4000 BIOS write-back fixed-base fixed-length set-by-firmware active
12	0x8c000/0x4000 BIOS write-back fixed-base fixed-length set-by-firmware active
13	0x90000/0x4000 BIOS write-back fixed-base fixed-length set-by-firmware active
14	0x94000/0x4000 BIOS write-back fixed-base fixed-length set-by-firmware active
15	0x98000/0x4000 BIOS write-back fixed-base fixed-length set-by-firmware active
16	0x9c000/0x4000 BIOS write-back fixed-base fixed-length set-by-firmware active
17	0xa0000/0x4000 BIOS uncacheable fixed-base fixed-length set-by-firmware active
18	0xa4000/0x4000 BIOS uncacheable fixed-base fixed-length set-by-firmware active
19	0xa8000/0x4000 BIOS uncacheable fixed-base fixed-length set-by-firmware active
20	0xac000/0x4000 BIOS uncacheable fixed-base fixed-length set-by-firmware active
21	0xb0000/0x4000 BIOS uncacheable fixed-base fixed-length set-by-firmware active
22	0xb4000/0x4000 BIOS uncacheable fixed-base fixed-length set-by-firmware active
23	0xb8000/0x4000 BIOS uncacheable fixed-base fixed-length set-by-firmware active
24	0xbc000/0x4000 BIOS uncacheable fixed-base fixed-length set-by-firmware active
25	0xc0000/0x1000 BIOS write-protect fixed-base fixed-length set-by-firmware active
26	0xc1000/0x1000 BIOS write-protect fixed-base fixed-length set-by-firmware active
27	0xc2000/0x1000 BIOS write-protect fixed-base fixed-length set-by-firmware active
28	0xc3000/0x1000 BIOS write-protect fixed-base fixed-length set-by-firmware active
29	0xc4000/0x1000 BIOS write-protect fixed-base fixed-length set-by-firmware active
30	0xc5000/0x1000 BIOS write-protect fixed-base fixed-length set-by-firmware active
31	0xc6000/0x1000 BIOS write-protect fixed-base fixed-length set-by-firmware active
32	0xc7000/0x1000 BIOS write-protect fixed-base fixed-length set-by-firmware active
33	0xc8000/0x1000 BIOS write-protect fixed-base fixed-length set-by-firmware active
34	0xc9000/0x1000 BIOS write-protect fixed-base fixed-length set-by-firmware active
35	0xca000/0x1000 BIOS write-protect fixed-base fixed-length set-by-firmware active
36	0xcb000/0x1000 BIOS write-protect fixed-base fixed-length set-by-firmware active
37	0xcc000/0x1000 BIOS write-protect fixed-base fixed-length set-by-firmware active
38	0xcd000/0x1000 BIOS write-protect fixed-base fixed-length set-by-firmware active
39	0xce000/0x1000 BIOS write-protect fixed-base fixed-length set-by-firmware active
40	0xcf000/0x1000 BIOS write-protect fixed-base fixed-length set-by-firmware active

83	0xfa000/0x1000 BIOS write-protect fixed-base fixed-length set-by-firmware active
84	0xfb000/0x1000 BIOS write-protect fixed-base fixed-length set-by-firmware active
85	0xfc000/0x1000 BIOS write-protect fixed-base fixed-length set-by-firmware active
86	0xfd000/0x1000 BIOS write-protect fixed-base fixed-length set-by-firmware active
87	0xfe000/0x1000 BIOS write-protect fixed-base fixed-length set-by-firmware active
88	0xff000/0x1000 BIOS write-protect fixed-base fixed-length set-by-firmware active
89	0x0/0x200000000 BIOS write-back set-by-firmware active
90	0x200000000/0x200000000 BIOS write-back set-by-firmware active
91	0x220000000/0x100000000 BIOS write-back set-by-firmware active
92	0xe0000000/0x200000000 BIOS uncacheable set-by-firmware active
93	0xd0000000/0x100000000 BIOS uncacheable set-by-firmware active

動作検証レポート 詳細データ

詳細データ

カーネル環境変数データ詳細一覧

```
LINES="24"
bootfile="kernel"
comconsole_pcidv="
comconsole_port="1016"
comconsole_speed="9600"
console="vidconsole"
currdev="disk0p2:"
hint.acpi.0.oem="AMI"
hint.acpi.0.revision="2"
hint.acpi.0.rsdv="984208"
hint.acpi.0.rsdv="0xcc7f3028"
hint.acpi.0.xsdt="0x00000000cc7f3090"
hint.acpi.0.xsdt_length="36"
hint.atkbd.0.at="atkbd"
hint.atkbd.0.irq="1"
hint.atkbd.0.at="isa"
hint.atkbd.0.port="0x060"
hint.atrtc.0.at="isa"
hint.atrtc.0.irq="8"
hint.atrtc.0.port="0x70"
hint.attimer.0.at="isa"
hint.attimer.0.irq="0"
hint.attimer.0.port="0x40"
hint.fd.0.at="fdc0"
hint.fd.0.drive="0"
hint.fd.1.at="fdc0"
hint.fd.1.drive="1"
hint.fdc.0.at="isa"
hint.fdc.0.drq="2"
hint.fdc.0.irq="6"
hint.fdc.0.port="0x3F0"
hint.ppc.0.at="isa"
hint.ppc.0.irq="7"
hint.psm.0.at="atkbd"
hint.psm.0.irq="12"
hint.sc.0.at="isa"
hint.sc.0.flags="0x100"
hint.uart.0.at="isa"
hint.uart.0.flags="0x10"
hint.uart.0.irq="4"
hint.uart.0.port="0x3F8"
hint.uart.1.at="isa"
hint.uart.1.irq="3"
hint.uart.1.port="0x2F8"
hint.wbwd.0.at="isa"
interpret="OK"
kernel="kernel"
kernel[0]="kernel"
kernel[1]="kernel.old"
kernel_options=""
kernelname="/boot/kernel/kernel"
loaddev="disk0p2:"
loader_conf_files="/boot/device.hints /boot/loader.conf /boot/loader.conf.local"
mac_iff="N0"
module_path="/boot/kernel;/boot/modules"
smbios.bios.reldate="05/22/2014"
smbios.bios.vendor="American Megatrends Inc."
smbios.bios.version="4.6.0203"
smbios.chassis.maker="NEC"
smbios.chassis.serial="01"
smbios.chassis.tag="-----"
smbios.chassis.version="856-180006-502"
smbios.memory.enabled="8388608"
smbios.planar.maker="GIGABYTE"
smbios.planar.product="GA-6LASV3"
smbios.planar.serial="0EG6U5800067"
smbios.planar.version="2.0A"
smbios.socket.enabled="1"
smbios.socket.populated="1"
smbios.system.maker="NEC"
smbios.system.product="Express5800/R110g-1E [N8100-2174Y]"
smbios.system.serial="4800112"
smbios.system.uid="00ebd656-8e31-e411-8001-94de80ff25c3"
smbios.system.version="FR1.0"
smbios.version="2.7"
```

```
temp_options=""  
vfs.root.mountfrom="ufs:/dev/da0p2"  
vfs.root.mountfrom.options="rw"
```

カーネルステートデータ詳細一覧

```
kern.ostype: FreeBSD
kern.osrelease: 9.3-RELEASE
kern.osrevision: 199506
kern.version: FreeBSD 9.3-RELEASE #0: Tue Nov 24 17:20:35 JST 2015
root@verify.bsdconsulting.co.jp:/usr/obj/usr/src/sys/GENERIC
kern.maxvnodes: 212828
kern.maxproc: 13508
kern.maxfiles: 259612
kern.argmax: 262144
kern.securelevel: -1
kern.hostname: verify.freebsdconsulting.co.jp
kern.hostid: 1551666897
kern.clockrate: { hz = 1000, tick = 1000, profhz = 8128, stathz = 127 }
kern.posix1version: 200112
kern.ngroups: 1023
kern.job_control: 1
kern.saved_ids: 0
kern.boottime: { sec = 1448353910, usec = 859674 } Tue Nov 24 17:31:50 2015
kern.domainname:
kern.osreldate: 903000
kern.bootfile: /boot/kernel/kernel
kern.maxfilesperproc: 233649
kern.maxprocperuid: 12157
kern.ipc.maxsockbuf: 2097152
kern.ipc.sockbuf_waste_factor: 8
kern.ipc.somaxconn: 128
kern.ipc.max_linkhdr: 16
kern.ipc.max_protohdr: 60
kern.ipc.max_hdr: 76
kern.ipc.max_datalen: 92
kern.ipc.nmbufs: 3215175
kern.ipc.nmbjumbo16: 167456
kern.ipc.nmbjumbo9: 223275
kern.ipc.nmbjumbop: 251185
kern.ipc.nmbclusters: 502370
kern.ipc.maxbufmem: 4115417088
kern.ipc.piperesizeallowed: 1
kern.ipc.piperesizefail: 0
kern.ipc.pipeallocfail: 0
kern.ipc.piperefragetry: 0
kern.ipc.pipekva: 20480
kern.ipc.maxpipekva: 132919296
kern.ipc.msgseg: 2048
kern.ipc.msgssz: 8
kern.ipc.msgtql: 40
kern.ipc.msgmnb: 2048
kern.ipc.msgmni: 40
kern.ipc.msgmax: 16384
kern.ipc.semaem: 16384
kern.ipc.semvmx: 32767
kern.ipc.semusz: 632
kern.ipc.semume: 50
kern.ipc.semopm: 100
kern.ipc.semmsl: 340
kern.ipc.semnu: 150
kern.ipc.semms: 340
kern.ipc.semni: 50
kern.ipc.shm_allow_removed: 0
kern.ipc.shm_use_phys: 0
kern.ipc.shmall: 131072
kern.ipc.shmseg: 128
kern.ipc.shmni: 192
kern.ipc.shmin: 1
kern.ipc.shmmax: 536870912
kern.ipc.maxsockets: 259612
kern.ipc.numopencs: 14
kern.ipc.nsfbufsused: 0
kern.ipc.nsfbufspeak: 0
kern.ipc.nsfbufs: 0
kern.dummy: 0
kern.ps_strings: 140737488351200
kern.usrstack: 140737488351232
kern.logsigexit: 1
kern.iov_max: 1024
kern.hostuid: 00ebd656-8e31-e411-8001-94de80ff25c3
kern.cam.sort_io_queues: 1
kern.cam.debug_delay: 0
kern.cam.dflags: 0
kern.cam.boot_delay: 0
kern.cam.pmp.hide_special: 1
kern.cam.pmp.default_timeout: 30
kern.cam.pmp.retry_count: 1
kern.cam.cam_srch_hi: 0
kern.cam.scsi_delay: 5000
kern.cam.cd.timeout: 30000
```

kern.cam.cd.retry_count: 4
kern.cam.cd.poll_period: 3
kern.cam.cd.changer.max_busy_seconds: 15
kern.cam.cd.changer.min_busy_seconds: 5
kern.cam.cd.0.minimum_cmd_size: 6
kern.cam.ada.write_cache: 1
kern.cam.ada.read_ahead: 1
kern.cam.ada.spindown_suspend: 1
kern.cam.ada.spindown_shutdown: 1
kern.cam.ada.send_ordered: 1
kern.cam.ada.default_timeout: 30
kern.cam.ada.retry_count: 4
kern.cam.ada.legacy_aliases: 1
kern.cam.da.send_ordered: 1
kern.cam.da.default_timeout: 60
kern.cam.da.retry_count: 4
kern.cam.da.poll_period: 3
kern.cam.da.0.delete_method: NONE
kern.cam.da.0.delete_max: 131072
kern.cam.da.0.minimum_cmd_size: 6
kern.cam.da.0.sort_io_queue: -1
kern.cam.da.0.error_inject: 0
kern.cam.enc.emulate_array_devices: 1
kern.tty_pty_warningcnt: 1
kern.disks: cd0 da0
kern.geom.dev.delete_max_sectors: 262144
kern.geom.disk.da0.led:
kern.geom.disk.cd0.led:
kern.geom.inflight_transient_maps: 0
kern.geom.transient_map_soft_failures: 0
kern.geom.transient_map_hard_failures: 0
kern.geom.transient_map_retries: 10
kern.geom.transient_maps: 279794198
kern.geom.collectstats: 1
kern.geom.debugflags: 0
kern.geom.conftxt: 0 DISK cd0 0 2048 hd 0 sc 0
kern.geom.confdot: digraph geom {
kern.geom.confxml: <mesh>
kern.geom.label.debug: 0
kern.geom.label.ext2fs.enable: 1
kern.geom.label.iso9660.enable: 1
kern.geom.label.msdosfs.enable: 1
kern.geom.label.ntfs.enable: 1
kern.geom.label.reiserfs.enable: 1
kern.geom.label.ufs.enable: 1
kern.geom.label.ufsid.enable: 1
kern.geom.label.gptid.enable: 1
kern.geom.label.gpt.enable: 1
kern.geom.part.check_integrity: 1
kern.geom.raid.legacy_aliases: 1
kern.geom.raid.idle_threshold: 1000000
kern.geom.raid.name_format: 0
kern.geom.raid.disconnect_on_failure: 1
kern.geom.raid.clean_time: 5
kern.geom.raid.start_timeout: 30
kern.geom.raid.read_err_thresh: 10
kern.geom.raid.debug: 0
kern.geom.raid.aggressive_spare: 0
kern.geom.raid.enable: 1
kern.geom.raid.ddf.enable: 1
kern.geom.raid.intel.enable: 1
kern.geom.raid.jmicron.enable: 1
kern.geom.raid.nvidia.enable: 1
kern.geom.raid.promise.enable: 1
kern.geom.raid.sii.enable: 1
kern.geom.raid.concat.enable: 1
kern.geom.raid.raid0.enable: 1
kern.geom.raid.raid1.enable: 1
kern.geom.raid.raid1.rebuild_meta_update: 1024
kern.geom.raid.raid1.rebuild_cluster_idle: 100
kern.geom.raid.raid1.rebuild_fair_io: 20
kern.geom.raid.raid1.rebuild_slab_size: 1048576
kern.geom.raid.raid1e.enable: 1
kern.geom.raid.raid1e.rebuild_meta_update: 1024
kern.geom.raid.raid1e.rebuild_cluster_idle: 100
kern.geom.raid.raid1e.rebuild_fair_io: 20
kern.geom.raid.raid1e.rebuild_slab_size: 1048576
kern.geom.raid.raid5.enable: 1
kern.elf64.nxstack: 1
kern.elf64.fallback_brand: -1
kern.init_shutdown_timeout: 120
kern.init_path: /sbin/init:/sbin/oinit:/sbin/init.bak:/rescue/init:/stand/sysinstall
kern.acct_suspended: 0
kern.acct_configured: 0
kern.acct_chkfreq: 15
kern.acct_resume: 4
kern.acct_suspend: 2
kern.cp_times: 7162087 0 9420934 395062 1674976 6786460 0 9946347 253046 1666804
kern.cp_time: 13948547 0 19367281 648108 3341780
kern.constty_wakeups_per_second: 5
kern.consmgbuf_size: 8192

kern.consmute: 0
kern.console: ttyv0,/ttyv0,uart,ucom,
kern.openfiles: 60
kern.eventtimer.choice: LAPIC(600) HPET(550) HPET1(440) HPET2(440) HPET3(440) HPET4(440) HPET5(440) HPET6(440) i8254(100) RTC(0)
kern.eventtimer.et.LAPIC.flags: 7
kern.eventtimer.et.LAPIC.frequency: 49885466
kern.eventtimer.et.LAPIC.quality: 600
kern.eventtimer.et.HPET.flags: 7
kern.eventtimer.et.HPET.frequency: 14318180
kern.eventtimer.et.HPET.quality: 550
kern.eventtimer.et.HPET1.flags: 3
kern.eventtimer.et.HPET1.frequency: 14318180
kern.eventtimer.et.HPET1.quality: 440
kern.eventtimer.et.HPET2.flags: 3
kern.eventtimer.et.HPET2.frequency: 14318180
kern.eventtimer.et.HPET2.quality: 440
kern.eventtimer.et.HPET3.flags: 3
kern.eventtimer.et.HPET3.frequency: 14318180
kern.eventtimer.et.HPET3.quality: 440
kern.eventtimer.et.HPET4.flags: 3
kern.eventtimer.et.HPET4.frequency: 14318180
kern.eventtimer.et.HPET4.quality: 440
kern.eventtimer.et.HPET5.flags: 3
kern.eventtimer.et.HPET5.frequency: 14318180
kern.eventtimer.et.HPET5.quality: 440
kern.eventtimer.et.HPET6.flags: 3
kern.eventtimer.et.HPET6.frequency: 14318180
kern.eventtimer.et.HPET6.quality: 440
kern.eventtimer.et.RTC.flags: 17
kern.eventtimer.et.RTC.frequency: 32768
kern.eventtimer.et.RTC.quality: 0
kern.eventtimer.et.i8254.flags: 1
kern.eventtimer.et.i8254.frequency: 1193182
kern.eventtimer.et.i8254.quality: 100
kern.eventtimer.periodic: 0
kern.eventtimer.timer: LAPIC
kern.eventtimer.activetick: 1
kern.eventtimer.idletick: 0
kern.eventtimer.singlemul: 2
kern.kq_calloutmax: 4096
kern.disallow_high_osrel: 0
kern.ps_arg_cache_limit: 256
kern.stackprot: 7
kern.randompid: 0
kern.lastpid: 89603
kern.ktrace.request_pool: 100
kern.ktrace.genio_size: 4096
kern.module_path: /boot/kernel;/boot/modules
kern.malloc_count: 325
kern.fallback_elf_brand: -1
kern.pid_max: 99999
kern.features.scbus: 1
kern.features.ata_cam: 1
kern.features.nfscl: 1
kern.features.nfsd: 1
kern.features.geom_label: 1
kern.features.geom_part_bsd: 1
kern.features.geom_part_ebr_compat: 1
kern.features.geom_part_ebr: 1
kern.features.geom_part_gpt: 1
kern.features.geom_part_mbr: 1
kern.features.kposix_priority_scheduling: 1
kern.features.kdtrace_hooks: 1
kern.features.ktrace: 1
kern.features.compat_freebsd7: 1
kern.features.compat_freebsd6: 1
kern.features.compat_freebsd5: 1
kern.features.compat_freebsd4: 1
kern.features.hwpmc_hooks: 1
kern.features.stack: 1
kern.features.sysv_msg: 1
kern.features.sysv_sem: 1
kern.features.sysv_shm: 1
kern.features.posix_shm: 1
kern.features.inet: 1
kern.features.inet6: 1
kern.features.audit: 1
kern.features.security_mac: 1
kern.features.uffs_snapshot: 1
kern.features.softupdates: 1
kern.features.ufs_acl: 1
kern.features.ufs_quota64: 1
kern.features.ufs_quota: 1
kern.features.ufs_gjournal: 1
kern.confctx: options CONFIG_AUTOGENERATED
kern.supported_archs: amd64 i386
kern.maxusers: 843
kern.compiler_version: gcc version 4.2.1 20070831 patched [FreeBSD]
kern.ident: GENERIC
kern.hwpmc.softevents: 16
kern.kstack_pages: 4

```

kern.shutdown.kproc_shutdown_wait: 60
kern.shutdown.poweroff_delay: 5000
kern.shutdown.show_busybufs: 0
kern.stop_scheduler_on_panic: 1
kern.sync_on_panic: 0
kern.panic_reboot_wait_time: 15
kern.corefile: %N.core
kern.nodump_coredump: 0
kern.coredump: 1
kern.sugid_coredump: 0
kern.sigqueue.alloc_fail: 0
kern.sigqueue.overflow: 0
kern.sigqueue.preallocate: 1024
kern.sigqueue.max_pending_per_proc: 128
kern.forcesigexit: 1
kern.fscale: 2048
kern.timecounter.fast_gettime: 1
kern.timecounter.tick: 1
kern.timecounter.choice: TSC-low(1000) ACPI-fast(900) i8254(0) HPET(950) dummy(-1000000)
kern.timecounter.hardware: TSC-low
kern.timecounter.stepwarnings: 0
kern.timecounter.tc.HPET.mask: 4294967295
kern.timecounter.tc.HPET.counter: 3951613826
kern.timecounter.tc.HPET.frequency: 14318180
kern.timecounter.tc.HPET.quality: 950
kern.timecounter.tc.i8254.mask: 65535
kern.timecounter.tc.i8254.counter: 29495
kern.timecounter.tc.i8254.frequency: 1193182
kern.timecounter.tc.i8254.quality: 0
kern.timecounter.tc.ACPI-fast.mask: 16777215
kern.timecounter.tc.ACPI-fast.counter: 11587606
kern.timecounter.tc.ACPI-fast.frequency: 3579545
kern.timecounter.tc.ACPI-fast.quality: 900
kern.timecounter.tc.TSC-low.mask: 4294967295
kern.timecounter.tc.TSC-low.counter: 2699671524
kern.timecounter.tc.TSC-low.frequency: 1546449374
kern.timecounter.tc.TSC-low.quality: 1000
kern.timecounter.tsc_shift: 1
kern.timecounter.smp_tsc_adjust: 0
kern.timecounter.smp_tsc: 1
kern.timecounter.invariant_tsc: 1
kern.threads.max_threads_hits: 0
kern.threads.max_threads_per_proc: 1500
kern.ccpu: 0
kern.sched.cpusetsize: 8
kern.sched.preemption: 1
kern.sched.topology_spec: <groups>
kern.sched.steal_thresh: 2
kern.sched.steal_idle: 1
kern.sched.balance_interval: 127
kern.sched.balance: 1
kern.sched.affinity: 1
kern.sched.idlespinthresh: 157
kern.sched.idlespins: 10000
kern.sched.static_boost: 152
kern.sched.preempt_thresh: 80
kern.sched.interact: 30
kern.sched.slice: 12
kern.sched.quantum: 94488
kern.sched.name: ULE
kern.devstat.version: 6
kern.devstat.generation: 221
kern.devstat.numdevs: 4
kern.kobj_methodcount: 205
kern.log_wakeups_per_second: 5
kern.msgbuf_show_timestamp: 0
kern.vm_guest: none
kern.sgrowsiz: 131072
kern.maxssiz: 536870912
kern.dflssiz: 8388608
kern.maxdsiz: 34359738368
kern.dfldsiz: 134217728
kern.maxtsiz: 134217728
kern.bio_transient_maxcnt: 1024
kern.maxbcache: 0
kern.maxswzone: 0
kern.msgbufsize: 65536
kern.nswbuf: 256
kern.nbuf: 52586
kern.ncallout: 18508
kern.hz: 1000
kern.msgbuf_clear: 0
kern.msgbuf: 7m[47m(0qqqqqqqqqqqqqqqqqqqq[m[30m[47m(0k(B (0x(B[30m[40m[1m [36m[44m[K
<118>Please select a password for the system management account (root):
<118>New Password:
<118>Retype New Password:
<118>[37m[47m(0x(B[30m[47m Please select a network interface to configure: (0x(B[30m[40m[1m[K
<5>bge0: link state changed to DOWN
<5>bge0: link state changed to UP
<118> [37m[47m(0x(B[30m[47m Choose the services you would like to be started at boot: (0x(B[30m[40m[1m [36m[44m[K
<118>Username: Full name: Uid (Leave empty for default): Login group [sasaki]: Login group is wheel. Invite sasaki into other groups? []:

```

```

Login class [default]: Shell (sh csh tcsh nologin) [sh]: Home directory [/home/sasaki]: Home directory permissions (Leave empty for
default): Use password-based authentication? [yes]: Use an empty password? (yes/no) [no]: Use a random password? (yes/no) [no]: Enter
password:
<118>Enter password again:
<118>Lock out the account after creation? [no]: Username : sasaki
<118>Password : *****
<118>Full Name : sasaki
<118>Uid : 1001
<118>Class :
<118>Groups : wheel operator
<118>Home : /home/sasaki
<118>Home Mode :
<118>Shell : /bin/tcsh
<118>Locked : no
<118>OK? (yes/no): adduser: INFO: Successfully added (sasaki) to the user database.
<118>Add another user? (yes/no): Goodbye!
<118>Updating motd: /etc/motd is not writable, update failed.
<118>Configuring syscons: blanktime.
<118>Tue Nov 24 17:28:48 UTC 2015
<118>Nov 24 17:28:49 login: ROOT LOGIN (root) ON ttyv0
<118>Nov 24 17:29:15 login: ROOT LOGIN (root) ON ttyv1
<118>Nov 24 17:30:16 reboot: rebooted by root
<118>Nov 24 17:30:16 syslogd: exiting on signal 15
FreeBSD 9.3-RELEASE #: Tue Nov 24 17:20:35 JST 2015
root@verify.bsdconsulting.co.jp:/usr/obj/usr/src/sys/GENERIC amd64
CPU: Intel(R) Pentium(R) CPU G3240 @ 3.10GHz (3092.90-MHz K8-class CPU)
TSC: P-state invariant, performance statistics
ACPI APIC Table: <AMI 06A0 >
FreeBSD/SMP: Multiprocessor System Detected: 2 CPUs
FreeBSD/SMP: 1 package(s) x 2 core(s)
cpu0 (BSP): APIC ID: 0
cpu1 (AP): APIC ID: 2
ACPI Warning: FADT (revision 5) is longer than ACPI 2.0 version, truncating length 268 to 244 (20110527/tbfadt-320)
acpi0: <AMI 06A0> on motherboard
acpi0: Power Button (fixed)
acpi0: reservation of 0, a0000 (3) failed
cpu0: <ACPI CPU> on acpi0
cpu1: <ACPI CPU> on acpi0
hpet0: <High Precision Event Timer> iomem 0xfed00000-0xfed003ff on acpi0
atrtc0: <AT realtime clock> port 0x70-0x77 irq 8 on acpi0
attimer0: <AT timer> port 0x40-0x43,0x50-0x53 irq 0 on acpi0
acpi_timer0: <24-bit timer at 3.579545MHz> port 0x1808-0x180b on acpi0
pcib0: <ACPI Host-PCI bridge> port 0xcfc8-0xcfcf on acpi0
pci0: <ACPI PCI bus> on pcib0
xhci0: <Intel Lynx Point USB 3.0 controller> mem 0xdfa00000-0xdfa0ffff irq 16 at device 20.0 on pci0
xhci0: 32 byte context size.
xhci0: Port routing mask set to 0xffffffff
pci0: <simple comms> at device 22.0 (no driver attached)
pci0: <simple comms> at device 22.1 (no driver attached)
ehci0: <EHCI (generic) USB 2.0 controller> mem 0xdfa12000-0xdfa123ff irq 16 at device 26.0 on pci0
usb1: EHCI version 1.0
pcib1: <ACPI PCI-PCI bridge> irq 16 at device 28.0 on pci0
pci33: <ACPI PCI bus> on pcib1
LSI MegaRAID SAS FreeBSD mrsas driver version: 06.704.01.00-fbsd
mrsas0: <LSI Thunderbolt SAS Controller> port 0xe000-0xe0ff mem 0xdf960000-0xdf963fff,0xdf900000-0xdf93ffff irq 16 at device 0.0 on pci33
mrsas0: Internal command timed out after 180 seconds.
pcib2: <ACPI PCI-PCI bridge> irq 16 at device 28.4 on pci0
pcib2: failed to allocate initial memory window: 0xde000000-0xdf8fffff
pci57: <ACPI PCI bus> on pcib2
vgapci0: <VGA-compatible display> mem 0xde000000-0xdeffffff,0xdf000000-0xdf7fffff irq 16 at device 0.0 on pci57
vgapci0: Boot video device
pcib3: <ACPI PCI-PCI bridge> irq 17 at device 28.5 on pci0
pci58: <ACPI PCI bus> on pcib3
bge0: <Broadcom NetXtreme Gigabit Ethernet Controller, ASIC rev. 0x5717100> mem
0xdfe50000-0xdfe5ffff,0xdfe40000-0xdfe4ffff,0xdfe30000-0xdfe3ffff irq 17 at device 0.0 on pci58
bge0: APE FW version: NCSI v1.2.33.0
bge0: CHIP ID 0x05717100; ASIC REV 0x5717; CHIP REV 0x57171; PCI-E
miibus0: <MII bus> on bge0
brgphy0: <BCM5717C 1000BASE-T media interface> PHY 1 on miibus0
brgphy0: 10baseT, 10baseT-FDX, 100baseTX, 100baseTX-FDX, 1000baseT, 1000baseT-master, 1000baseT-FDX, 1000baseT-FDX-master, auto, auto-flow
bge0: Ethernet address: 94:de:80:ff:25:96
bge1: <Broadcom NetXtreme Gigabit Ethernet Controller, ASIC rev. 0x5717100> mem
0xdfe20000-0xdfe2ffff,0xdfe10000-0xdfe1ffff,0xdfe00000-0xdfe0ffff irq 18 at device 0.1 on pci58
bge1: APE FW version: NCSI v1.2.33.0
bge1: CHIP ID 0x05717100; ASIC REV 0x5717; CHIP REV 0x57171; PCI-E
miibus1: <MII bus> on bge1
brgphy1: <BCM5717C 1000BASE-T media interface> PHY 2 on miibus1
brgphy1: 10baseT, 10baseT-FDX, 100baseTX, 100baseTX-FDX, 1000baseT, 1000baseT-master, 1000baseT-FDX, 1000baseT-FDX-master, auto, auto-flow
bge1: Ethernet address: 94:de:80:ff:25:97
ehci1: <EHCI (generic) USB 2.0 controller> mem 0xdfa11000-0xdfa113ff irq 23 at device 29.0 on pci0
usb2: EHCI version 1.0
isab0: <PCI-ISA bridge> at device 31.0 on pci0
isa0: <ISA bus> on isab0
atapci0: <Intel Lynx Point SATA300 controller> port 0xf0d0-0xf0d7,0xf0c0-0xf0c3,0xf0b0-0xf0b7,0xf0a0-0xf0a3,0xf090-0xf09f,0xf080-0xf08f
irq 19 at device 31.2 on pci0
ata2: <ATA channel> at channel 0 on atapci0
ata3: <ATA channel> at channel 1 on atapci0
atapci1: <Intel Lynx Point SATA300 controller> port 0xf070-0xf077,0xf060-0xf063,0xf050-0xf057,0xf040-0xf043,0xf030-0xf03f,0xf020-0xf02f
irq 19 at device 31.5 on pci0
ata4: <ATA channel> at channel 0 on atapci1
ata5: <ATA channel> at channel 1 on atapci1

```

```

acpi_button0: <Sleep Button> on acpi0
acpi_button1: <Power Button> on acpi0
uart0: <16550 or compatible> port 0x3f8-0x3ff irq 4 flags 0x10 on acpi0
uart1: <16550 or compatible> port 0x2f8-0x2ff irq 3 on acpi0
orm0: <ISA Option ROMs> at iomem 0xc0000-0xc7fff,0xcf800-0xd27ff on isa0
sc0: <System console> at flags 0x100 on isa0
sc0: VGA <16 virtual consoles, flags=0x300>
vga0: <Generic ISA VGA> at port 0x3c0-0x3df iomem 0xa0000-0xbffff on isa0
ppc0: cannot reserve I/O port range
est0: <Enhanced SpeedStep Frequency Control> on cpu0
p4tcc0: <CPU Frequency Thermal Control> on cpu0
est1: <Enhanced SpeedStep Frequency Control> on cpu1
p4tcc1: <CPU Frequency Thermal Control> on cpu1
usb0: 5.0Gbps Super Speed USB v3.0
usb1: 480Mbps High Speed USB v2.0
usb2: 480Mbps High Speed USB v2.0
ugen0.1: <0x8086> at usb0
uhub0: <0x8086 XHCI root HUB, class 9/0, rev 3.00/1.00, addr 1> on usb0
ugen1.1: <Intel> at usb1
uhub1: <Intel EHCI root HUB, class 9/0, rev 2.00/1.00, addr 1> on usb1
ugen2.1: <Intel> at usb2
uhub2: <Intel EHCI root HUB, class 9/0, rev 2.00/1.00, addr 1> on usb2
uhub1: 2 ports with 2 removable, self powered
uhub2: 2 ports with 2 removable, self powered
uhub0: 21 ports with 21 removable, self powered
xhci0: Port routing mask set to 0x00000000
usb_alloc_device: device init 2 failed (USB_ERR_IOERROR, ignored)
ugen0.2: <Unknown> at usb0 (disconnected)
uhub_reattach_port: could not allocate new device
ugen1.2: <vendor 0x8087> at usb1
uhub3: <vendor 0x8087 product 0x8008, class 9/0, rev 2.00/0.04, addr 2> on usb1
ugen2.2: <vendor 0x8087> at usb2
uhub4: <vendor 0x8087 product 0x8000, class 9/0, rev 2.00/0.04, addr 2> on usb2
da0: <LSI MR9272-8i 3.23> Fixed Direct Access SCSI-5 device
da0: Serial Number 009a7854120176971b60ad0809b00506
da0: 150.000MB/s transfers
da0: 139200MB (285081600 512 byte sectors: 255H 63S/T 17745C)
cd0: <MATSHITA DVD-ROM UJ8E0 1.00> Removable CD-ROM SCSI-0 device
SMP: AP CPU #1 Launched!
cd0: Serial Number SP00I2R02764
cd0: 150.000MB/s transfers (SATA 1.x, UDMA5, ATAPI 12bytes, PIO 8192bytes)
cd0: Attempt to query device size failed: NOT READY, Medium not present - tray closed
Root mount waiting for: usb2 usb1
uhub3: 6 ports with 6 removable, self powered
uhub4: 6 ports with 6 removable, self powered
ugen1.3: <vendor 0x0409> at usb1
uhub5: <vendor 0x0409 product 0x005a, class 9/0, rev 2.00/1.00, addr 3> on usb1
Root mount waiting for: usb1
uhub5: 3 ports with 2 removable, bus powered
ugen1.4: <Topre Corporation> at usb1
ukbd0: <Topre Corporation HHKB Professional, class 0/0, rev 1.10/1.02, addr 4> on usb1
Root mount waiting for: usb1
ugen1.5: <American Megatrends Inc.> at usb1
ukbd1: <Keyboard Interface> on usb1
ums0: <Mouse Interface> on usb1
ums0: 3 buttons and [Z] coordinates ID=0
Trying to mount root from ufs:/dev/da0p2 [rw]...
<118>Setting hostuuid: 00ebd656-8e31-e411-8001-94de80ff25c3.
<118>Setting hostid: 0x5c7c8ed1.
<118>Entropy harvesting: interrupts ethernet point_to_point kickstart.
<118>Starting file system checks:
<118>/dev/da0p2: FILE SYSTEM CLEAN; SKIPPING CHECKS
<118>/dev/da0p2: clean, 33099335 free (2167 frags, 4137146 blocks, 0.0% fragmentation)
<118>Mounting local file systems:.
<118>Setting hostname: verify.freebsdconsulting.co.jp.
<118>Starting Network: lo0 bge0 bge1.
<118>lo0: flags=8049<UP,LOOPBACK,RUNNING,MULTICAST> metric 0 mtu 16384
<118> inet6 ::1 prefixlen 128
<118> inet6 fe80::1%lo0 prefixlen 64 scopeid 0x6
<118>bge0: flags=8843<UP,BROADCAST,RUNNING,SIMPLEX,MULTICAST> metric 0 mtu 1500
<118> ether 94:de:80:ff:25:96
<118> media: Ethernet autoselect (none)
<118> status: no carrier
<118>bge1: flags=8802<BROADCAST,SIMPLEX,MULTICAST> metric 0 mtu 1500
<118> ether 94:de:80:ff:25:97
<118> media: Ethernet autoselect
<118>Starting Network: bge1.
<118>bge1: flags=8802<BROADCAST,SIMPLEX,MULTICAST> metric 0 mtu 1500
<118> ether 94:de:80:ff:25:97
<118> media: Ethernet autoselect
<118>add net fe80:: gateway ::1
<118>add net ff02:: gateway ::1
<118>add net ::ffff:0.0.0.0: gateway ::1
<118>add net ::0.0.0.0: gateway ::1
<118>Waiting 30s for the default route interface: ...(bge0)
<118>ELF ldconfig path: /lib /usr/lib /usr/lib/compat
<118>32-bit compatibility ldconfig path: /usr/lib32
<118>Updating motd:.
<118>Configuring syscons: blanktime.
<118>2048 ae:12:36:58:70:3c:cd:f4:38:1e:9e:95:fa:7e:87:60 root@verify.freebsdconsulting.co.jp (RSA1)
<118>2048 a9:00:97:ec:48:34:93:9d:89:a0:06:76:1c:9c:fb:1a root@verify.freebsdconsulting.co.jp (RSA)

```



```

<118>1024 2b:0e:39:24:28:de:a8:87:25:7a:1e:e9:62:39:73:39 root@verify.freebdsconsulting.co.jp (DSA)
<118>256 57:71:f4:62:da:db:5d:c6:46:22:97:60:fe:84:69:82 root@verify.freebdsconsulting.co.jp (ECDSA)
<118>256 7d:3d:bf:98:eb:cd:7c:71:78:5b:ea:21:08:a5:d9:0c root@verify.freebdsconsulting.co.jp (ED25519)
<118>Tue Nov 24 17:32:06 JST 2015
<118>Nov 24 17:32:15 verify login: ROOT LOGIN (root) ON ttyv0
ugen1.6: <UFD 2.0> at usb1
umass0: <UFD 2.0 Silicon-Power16G, class 0/0, rev 2.00/1.00, addr 6> on usb1
umass0: SCSI over Bulk-Only; quirks = 0x4100
umass0:6:0:-1: Attached to scbus6
da1: <UFD 2.0 Silicon-Power16G PMAP> Removable Direct Access SCSI-4 device
da1: Serial Number 12090358056E600298331564282
da1: 40.000MB/s transfers
da1: 14786MB (30283008 512 byte sectors: 255H 63S/T 1885C)
da1: quirks=0x2<NO_6_BYTE>
<118>Nov 24 17:32:36 verify login: ROOT LOGIN (root) ON ttyv1
ugen1.6: <UFD 2.0> at usb1 (disconnected)
umass0: at uhub3, port 1, addr 6 (disconnected)
da1: <UFD 2.0 Silicon-Power16G PMAP> s/n 12090358056E600298331564282 detached
(da1:umass-sim0:0:0): Periph destroyed
<5>bge0: link state changed to DOWN
ugen2.3: <UFD 2.0> at usb2
umass0: <UFD 2.0 Silicon-Power16G, class 0/0, rev 2.00/1.00, addr 3> on usb2
umass0: SCSI over Bulk-Only; quirks = 0x4100
umass0:6:0:-1: Attached to scbus6
da1: <UFD 2.0 Silicon-Power16G PMAP> Removable Direct Access SCSI-4 device
da1: Serial Number 12090358056E600298331564282
da1: 40.000MB/s transfers
da1: 14786MB (30283008 512 byte sectors: 255H 63S/T 1885C)
da1: quirks=0x2<NO_6_BYTE>
ugen2.3: <UFD 2.0> at usb2 (disconnected)
umass0: at uhub4, port 3, addr 3 (disconnected)
da1: <UFD 2.0 Silicon-Power16G PMAP> s/n 12090358056E600298331564282 detached
(da1:umass-sim0:0:0): Periph destroyed
<5>bge0: link state changed to UP
kern.always_console_output: 0
kern.log_console_add_linefeed: 0
kern.log_console_output: 1
kern.smp.forward_signal_enabled: 1
kern.smp.topology: 0
kern.smp.cpus: 2
kern.smp.disabled: 0
kern.smp.active: 1
kern.smp.maxcpus: 64
kern.smp.maxid: 1
kern.tty_inq_flush_secure: 1
kern.tty_nout: 438442
kern.tty_nin: 401
kern.minvnodes: 53207
kern.metadelay: 28
kern.dirdelay: 29
kern.filedelay: 30
kern.chroot_allow_open_directories: 1
kern.elf32.read_exec: 0
kern.elf32.nxstack: 1
kern.elf32.fallback_brand: -1
kern.random.yarrow.gengateinterval: 10
kern.random.yarrow.bins: 10
kern.random.yarrow.fastthresh: 192
kern.random.yarrow.slowthresh: 256
kern.random.yarrow.slowoverthresh: 2
kern.random.sys.seeded: 1
kern.random.sys.harvest.ethernet: 1
kern.random.sys.harvest.point_to_point: 1
kern.random.sys.harvest.interrupt: 1
kern.random.sys.harvest.swi: 0
vm.vmtotal:
System wide totals computed every five seconds: (values in kilobytes)
Processes: (RUNQ: 1 Disk Wait: 0 Page Wait: 0 Sleep: 18)
Virtual Memory: (Total: 1074557532K Active: 409344K)
Real Memory: (Total: 87756K Active: 9448K)
Shared Virtual Memory: (Total: 14400K Active: 5496K)
Shared Real Memory: (Total: 3196K Active: 3116K)
Free Memory: 7811420K
vm.loadavg: { 0.97 136.03 297.19 }
vm.v_free_min: 12712
vm.v_free_target: 53514
vm.v_free_reserved: 2666
vm.v_inactive_target: 80271
vm.v_cache_min: 53514
vm.v_cache_max: 107028
vm.v_pageout_free_min: 34
vm.pageout_algorithm: 0
vm.swap_enabled: 1
vm.md_malloc_wait: 0
vm.kmem_map_free: 8215433216
vm.kmem_map_size: 15343616
vm.kmem_size_scale: 1
vm.kmem_size_max: 329853485875
vm.kmem_size_min: 0
vm.kmem_size: 8230834176
vm.nswapdev: 1

```

```

vm.dnmax: 32
vm.swap_async_max: 4
vm.overcommit: 0
vm.swap_reserved: 193921024
vm.swap_total: 4227821568
vm.zone_count: 91
vm.swap_idle_threshold2: 10
vm.swap_idle_threshold1: 2
vm.kstacks: 482
vm.kstack_cache_size: 128
vm.exec_map_entries: 16
vm.stats.misc.zero_page_count: 4350
vm.stats.misc.cnt_prezero: 0
vm.stats.vm.v_kthreadpages: 0
vm.stats.vm.v_rforkpages: 0
vm.stats.vm.v_vforkpages: 1721259
vm.stats.vm.v_forkpages: 46415400
vm.stats.vm.v_kthreads: 17
vm.stats.vm.v_rforks: 0
vm.stats.vm.v_vforks: 3361
vm.stats.vm.v_forks: 86225
vm.stats.vm.v_interrupt_free_min: 2
vm.stats.vm.v_pageout_free_min: 34
vm.stats.vm.v_cache_max: 107028
vm.stats.vm.v_cache_min: 53514
vm.stats.vm.v_cache_count: 236
vm.stats.vm.v_inactive_count: 1645
vm.stats.vm.v_inactive_target: 80271
vm.stats.vm.v_active_count: 972
vm.stats.vm.v_wire_count: 53851
vm.stats.vm.v_free_count: 1952618
vm.stats.vm.v_free_min: 12712
vm.stats.vm.v_free_target: 53514
vm.stats.vm.v_free_reserved: 2666
vm.stats.vm.v_page_count: 2009481
vm.stats.vm.v_page_size: 4096
vm.stats.vm.v_tfree: 3327388138
vm.stats.vm.v_pfree: 1501470960
vm.stats.vm.v_dfree: 0
vm.stats.vm.v_tcached: 2847889024
vm.stats.vm.v_pdpages: 2223347355
vm.stats.vm.v_pdwakeup: 86914
vm.stats.vm.v_reactivated: 1432251564
vm.stats.vm.v_intrans: 21075302
vm.stats.vm.v_vnodepgsout: 0
vm.stats.vm.v_vnodepgsin: 550109
vm.stats.vm.v_vnodeout: 0
vm.stats.vm.v_vnodein: 101550
vm.stats.vm.v_swappgsout: 560391993
vm.stats.vm.v_swappgsin: 156764287
vm.stats.vm.v_swapout: 35972944
vm.stats.vm.v_swapin: 20659917
vm.stats.vm.v_ozfod: 1221603
vm.stats.vm.v_zfod: 1836148348
vm.stats.vm.v_cow_optim: 1052
vm.stats.vm.v_cow_faults: 2025155
vm.stats.vm.v_vm_faults: 2059405475
vm.stats.sys.v_soft: 774434416
vm.stats.sys.v_intr: 457819592
vm.stats.sys.v_syscall: 4071370693
vm.stats.sys.v_trap: 2303917500
vm.stats.sys.v_swtdch: 2256927998
vm.stats.object.bypasses: 131514
vm.stats.object.collapses: 122730
vm.v_free_severe: 7689
vm.old_mlock: 1
vm.old_msync: 0
vm.tryrelock_restart: 0
vm.boot_pages: 64
vm.max_wired: 663232
vm.pageout_lock_miss: 0
vm.disable_swapspace_pageouts: 0
vm.defer_swapspace_pageouts: 0
vm.swap_idle_enabled: 0
vm.pageout_stats_interval: 5
vm.pageout_full_stats_interval: 20
vm.pageout_stats_max: 53514
vm.max_laundry: 32
vm.phys_segs:
SEGMENT 0:
start: 0x10000
end: 0x94000
domain: 0
free list: 0xffffffff814f5ea8
SEGMENT 1:
start: 0x100000
end: 0x200000
domain: 0
free list: 0xffffffff814f5ea8
SEGMENT 2:
start: 0x183a000

```

```

end:      0xb9849000
domain:   0
free list: 0xffffffff814f5b00
SEGMENT 3:
start:    0xb9850000
end:      0xcc7a1000
domain:   0
free list: 0xffffffff814f5b00
SEGMENT 4:
start:    0xcf7ff000
end:      0xcf800000
domain:   0
free list: 0xffffffff814f5b00
SEGMENT 5:
start:    0x100000000
end:      0x21f8a4000
domain:   0
free list: 0xffffffff814f5b00
vm.phys_free:
FREE LIST 0:
FREE LIST 1:
vm.reserv.reclaimed: 123904
vm.reserv.partpopq:
-1: 27412K, 14
vm.reserv.freed: 558199
vm.reserv.broken: 1940
vm.idlezero_enable: 0
vm.kvm_free: 539748200448
vm.kvm_size: 549755809792
vm.pmap.pdpe.demotions: 2
vm.pmap.pde.promotions: 498608
vm.pmap.pde.p_failures: 3865582
vm.pmap.pde.mappings: 0
vm.pmap.pde.demotions: 470503
vm.pmap.pg_ps_enabled: 1
vm.pmap.pat_works: 1
vfs.ufs.dirhash_reclaimage: 5
vfs.ufs.dirhash_lowmemcount: 91787
vfs.ufs.dirhash_docheck: 0
vfs.ufs.dirhash_mem: 23099
vfs.ufs.dirhash_maxmem: 13455360
vfs.ufs.dirhash_minsize: 2560
vfs.ufs.rename_restarts: 0
vfs.nfs.downdelayinitial: 12
vfs.nfs.downdelayinterval: 30
vfs.nfs.keytab_encytype: 1
vfs.nfs.skip_wcc_data_onerr: 1
vfs.nfs.nfs3_jukebox_delay: 10
vfs.nfs.reconnects: 0
vfs.nfs.bufpackets: 4
vfs.nfs.debuglevel: 0
vfs.nfs.callback_addr:
vfs.nfs.realign_count: 0
vfs.nfs.realign_test: 0
vfs.nfs.nfs_directio_allow_mmap: 1
vfs.nfs.nfs_keep_dirty_on_error: 0
vfs.nfs.nfs_directio_enable: 0
vfs.nfs.clean_pages_on_close: 1
vfs.nfs.commit_on_close: 0
vfs.nfs.prime_access_cache: 0
vfs.nfs.access_cache_timeout: 60
vfs.nfs.diskless_rootpath:
vfs.nfs.diskless_valid: 0
vfs.nfs.nfs_ip_paranoia: 1
vfs.nfs.defect: 0
vfs.nfs.iodmax: 20
vfs.nfs.iodmin: 0
vfs.nfs.iodmaxidle: 120
vfs.devfs.rule_depth: 1
vfs.devfs.generation: 154
vfs.nfsd.disable_checkutf8: 0
vfs.nfsd.server_max_nfsvers: 4
vfs.nfsd.server_min_nfsvers: 2
vfs.nfsd.nfs_privport: 0
vfs.nfsd.async: 0
vfs.nfsd.enable_stringtoid: 0
vfs.nfsd.enable_locallocks: 0
vfs.nfsd.issue_delegations: 0
vfs.nfsd.commit_miss: 0
vfs.nfsd.commit_blks: 0
vfs.nfsd.mirrormnt: 1
vfs.nfsd.cachetcp: 1
vfs.nfsd.tpcachetimeo: 43200
vfs.nfsd.udphighwater: 500
vfs.nfsd.tcphighwater: 0
vfs.nfsd.minthreads: 1
vfs.nfsd.maxthreads: 1
vfs.nfsd.threads: 0
vfs.nfsd.request_space_used: 0
vfs.nfsd.request_space_used_highest: 0
vfs.nfsd.request_space_high: 47185920

```

vfs.nfsd.request_space_low: 31457280
vfs.nfsd.request_space_throttled: 0
vfs.nfsd.request_space_throttle_count: 0
vfs.nfsd.fha.enable: 1
vfs.nfsd.fha.bin_shift: 22
vfs.nfsd.fha.max_nfsds_per_fh: 8
vfs.nfsd.fha.max_reqs_per_nfsd: 0
vfs.nfsd.fha.fhe_stats: No file handle entries.
vfs.pfs.trace: 0
vfs.pfs.vncache.misses: 0
vfs.pfs.vncache.hits: 0
vfs.pfs.vncache.maxentries: 0
vfs.pfs.vncache.entries: 0
vfs.acl_nfs4_old_semantics: 0
vfs.flushwithdeps: 20730345
vfs.unmapped_buf_allowed: 1
vfs.barrierwrites: 8165
vfs.notbufdflashes: 105
vfs.flushbufqtarget: 100
vfs.mappingrestarts: 0
vfs.getnewbufrestarts: 722125711
vfs.getnewbufcalls: -1956391979
vfs.hifreebuffers: 5852
vfs.lofreebuffers: 2926
vfs.numfreebuffers: 52566
vfs.dirtybufthresh: 11849
vfs.hidirtybuffers: 13166
vfs.lodirtybuffers: 6583
vfs.numdirtybuffers: 20
vfs.recursiveflushes: 791633933
vfs.altbufferflushes: 0
vfs.bdwriteskip: 0
vfs.dirtybufferflushes: 0
vfs.hirunningspace: 13500416
vfs.lorunningspace: 9043968
vfs.bufdefragcnt: 0
vfs.buffreekvact: 789139855
vfs.buffreuscnt: 788979303
vfs.hibufspace: 860913664
vfs.lobufspace: 860848128
vfs.maxallocbufspace: 43045683
vfs.bufmallospace: 0
vfs.maxbufspace: 861569024
vfs.unmapped_bufspace: 1146880
vfs.bufspace: 4227072
vfs.runningbufspace: 0
vfs.vmiodiarenable: 1
vfs.cache.numfullpathfound: 29491
vfs.cache.numfullpathfail4: 0
vfs.cache.numfullpathfail2: 0
vfs.cache.numfullpathfail1: 0
vfs.cache.numfullpathcalls: 29482
vfs.cache.numupgrades: 775963
vfs.cache.numneghits: 188707
vfs.cache.numnegzaps: 2733
vfs.cache.numposhits: 1898254
vfs.cache.numposzaps: 66376823
vfs.cache.nummisszap: 2761634589
vfs.cache.nummiss: 4451939194
vfs.cache.numchecks: 100027677
vfs.cache.dotdothits: 1625403263
vfs.cache.dothis: 79789
vfs.cache.numcalls: 8908275093
vfs.cache.numcache: 310
vfs.cache.numneg: 19
vfs.ncsizefactor: 2
vfs.ncnegfactor: 16
vfs.read_min: 1
vfs.read_max: 64
vfs.write_behind: 1
vfs.tyenumhash: 1
vfs.lookup_shared: 1
vfs.usermount: 0
vfs.worklist_len: 8
vfs.timestamp_precision: 0
vfs.reassignbufcalls: -1293444658
vfs.vlru_allow_cache_src: 0
vfs.freevnodes: 17
vfs.wantfreevnodes: 53207
vfs.numvnodes: 275
vfs.ffi.dorealloclbks: 1
vfs.ffi.doasyncfree: 1
vfs.ffi.compute_summary_at_mount: 0
net.local.stream.recvspace: 8192
net.local.stream.sendspace: 8192
net.local.dgram.recvspace: 4096
net.local.dgram.maxdgram: 2048
net.local.seqpacket.recvspace: 8192
net.local.seqpacket.maxseqpacket: 8192
net.local.taskcount: 0
net.local.recycled: 0

```
net.local.deferred: 0
net.local.inflight: 0
net.inet.ip.portrange.randomtime: 45
net.inet.ip.portrange.randomcps: 10
net.inet.ip.portrange.randomized: 1
net.inet.ip.portrange.reservedlow: 0
net.inet.ip.portrange.reservedhigh: 1023
net.inet.ip.portrange.hilast: 65535
net.inet.ip.portrange.hifirst: 49152
net.inet.ip.portrange.last: 65535
net.inet.ip.portrange.first: 10000
net.inet.ip.portrange.lowlast: 600
net.inet.ip.portrange.lowfirst: 1023
net.inet.ip.forwarding: 0
net.inet.ip.redirect: 1
net.inet.ip.ttl: 64
net.inet.ip.rtxpire: 3600
net.inet.ip.rtmixpire: 10
net.inet.ip.rtmxcache: 128
net.inet.ip.sourceroute: 0
net.inet.ip.intr_queue_maxlen: 256
net.inet.ip.intr_queue_drops: 10389
net.inet.ip.accept_sourceroute: 0
net.inet.ip.keepfaith: 0
net.inet.ip.gifttl: 30
net.inet.ip.same_prefix_carp_only: 0
net.inet.ip.random_id_total: 0
net.inet.ip.random_id_collisions: 0
net.inet.ip.random_id_period: 8192
net.inet.ip.mcast.loop: 1
net.inet.ip.mcast.maxsocksrc: 128
net.inet.ip.mcast.maxgrpsrc: 512
net.inet.ip.fastforwarding: 0
net.inet.ip.maxfragpackets: 15699
net.inet.ip.maxfragsperpacket: 16
net.inet.ip.fragpackets: 0
net.inet.ip.check_interface: 0
net.inet.ip.random_id: 0
net.inet.ip.sendsourcequench: 0
net.inet.ip.process_options: 1
net.inet.icmp.maskrepl: 0
net.inet.icmp.icmplim: 200
net.inet.icmp.drop_redirect: 0
net.inet.icmp.bmcastecho: 0
net.inet.icmp.quotelen: 8
net.inet.icmp.reply_from_interface: 0
net.inet.icmp.reply_src:
net.inet.icmp.log_redirect: 0
net.inet.icmp.maskfake: 0
net.inet.icmp.icmplim_output: 1
net.inet.igmp.gsrdelay: 10
net.inet.igmp.default_version: 3
net.inet.igmp.legacysupp: 0
net.inet.igmp.v2enable: 1
net.inet.igmp.v1enable: 1
net.inet.igmp.sendlocal: 1
net.inet.igmp.sendra: 1
net.inet.igmp.recvifkludge: 1
net.inet.tcp.rfc1323: 1
net.inet.tcp.mssdflt: 536
net.inet.tcp.keepidle: 7200000
net.inet.tcp.keepintvl: 75000
net.inet.tcp.sendspace: 32768
net.inet.tcp.recvspace: 65536
net.inet.tcp.keepinit: 75000
net.inet.tcp.delacktime: 100
net.inet.tcp.v6mssdflt: 1220
net.inet.tcp.cc.available: newreno
net.inet.tcp.cc.algorithm: newreno
net.inet.tcp.hostcache.purge: 0
net.inet.tcp.hostcache.prune: 300
net.inet.tcp.hostcache.expire: 3600
net.inet.tcp.hostcache.count: 1
net.inet.tcp.hostcache.bucketlimit: 30
net.inet.tcp.hostcache.hashsize: 512
net.inet.tcp.hostcache.cachelimit: 15360
net.inet.tcp.recvbuf_max: 2097152
net.inet.tcp.recvbuf_inc: 16384
net.inet.tcp.recvbuf_auto: 1
net.inet.tcp.insecure_rst: 0
net.inet.tcp.ecn.maxretries: 1
net.inet.tcp.ecn.enable: 0
net.inet.tcp.abc_l_var: 2
net.inet.tcp.rfc3465: 1
net.inet.tcp.experimental.initswnd10: 1
net.inet.tcp.rfc3390: 1
net.inet.tcp.rfc3042: 1
net.inet.tcp.drop_synfin: 0
net.inet.tcp.delayed_ack: 1
net.inet.tcp.blackhole: 0
net.inet.tcp.log_in_vain: 0
```

```
net.inet.tcp.sendbuf_max: 2097152
net.inet.tcp.sendbuf_inc: 8192
net.inet.tcp.sendbuf_auto: 1
net.inet.tcp.tso: 1
net.inet.tcp.path_mtu_discovery: 1
net.inet.tcp.reass.overflows: 0
net.inet.tcp.reass.cursgments: 0
net.inet.tcp.reass.maxsegments: 31416
net.inet.tcp.sack.globalholes: 0
net.inet.tcp.sack.globalmaxholes: 65536
net.inet.tcp.sack.maxholes: 128
net.inet.tcp.sack.enable: 1
net.inet.tcp.soreceive_stream: 0
net.inet.tcp.isn_reseed_interval: 0
net.inet.tcp.icmp_may_rst: 1
net.inet.tcp.pcbcount: 3
net.inet.tcp.do_tcpdrain: 1
net.inet.tcp.tcbhashsize: 512
net.inet.tcp.log_debug: 0
net.inet.tcp.minmss: 216
net.inet.tcp.syncache.rst_on_sock_fail: 1
net.inet.tcp.syncache.rexmtlimit: 3
net.inet.tcp.syncache.hashsize: 512
net.inet.tcp.syncache.count: 0
net.inet.tcp.syncache.cachelimit: 15375
net.inet.tcp.syncache.bucketlimit: 30
net.inet.tcp.syncookies_only: 0
net.inet.tcp.syncookies: 1
net.inet.tcp.timer_race: 0
net.inet.tcp.per_cpu_timers: 0
net.inet.tcp.rexmit_drop_options: 1
net.inet.tcp.keepcnt: 8
net.inet.tcp.finwait2_timeout: 60000
net.inet.tcp.fast_finwait2_recycle: 0
net.inet.tcp.always_keepalive: 1
net.inet.tcp.rexmit_slop: 200
net.inet.tcp.rexmit_min: 30
net.inet.tcp.msl: 30000
net.inet.tcp.nolocaltimewait: 0
net.inet.tcp.maxtcpwt: 27767
net.inet.udp.checksum: 1
net.inet.udp.maxdgram: 9216
net.inet.udp.recvspace: 42080
net.inet.udp.blackhole: 0
net.inet.udp.log_in_vain: 0
net.inet.sctp.diag_info_code: 0
net.inet.sctp.blackhole: 0
net.inet.sctp.use_dcccecn: 1
net.inet.sctp.rttvar_steady_step: 20
net.inet.sctp.rttvar_eqret: 0
net.inet.sctp.rttvar_rtt: 5
net.inet.sctp.rttvar_bw: 4
net.inet.sctp.initial_cwnd: 3
net.inet.sctp.buffer_splitting: 0
net.inet.sctp.vtag_time_wait: 60
net.inet.sctp.nat_friendly_init: 0
net.inet.sctp.enable_sack_immediately: 0
net.inet.sctp.udp_tunneling_port: 0
net.inet.sctp.mobility_fasthandoff: 0
net.inet.sctp.mobility_base: 0
net.inet.sctp.default_frag_interleave: 1
net.inet.sctp.default_ss_module: 0
net.inet.sctp.default_cc_module: 0
net.inet.sctp.log_level: 0
net.inet.sctp.max_retran_chunk: 30
net.inet.sctp.min_residual: 1452
net.inet.sctp.strict_data_order: 0
net.inet.sctp.abort_at_limit: 0
net.inet.sctp.hb_max_burst: 4
net.inet.sctp.do_sctp_drain: 1
net.inet.sctp.max_chained_mbufs: 5
net.inet.sctp.abc_l_var: 2
net.inet.sctp.nat_friendly: 1
net.inet.sctp.auth_disable: 0
net.inet.sctp.asconf_auth_nochk: 0
net.inet.sctp.cwnd_maxburst: 1
net.inet.sctp.cmt_use_dac: 0
net.inet.sctp.nr_sack_on_off: 0
net.inet.sctp.cmt_on_off: 0
net.inet.sctp.outgoing_streams: 10
net.inet.sctp.incoming_streams: 2048
net.inet.sctp.add_more_on_output: 1452
net.inet.sctp.path_pf_threshold: 65535
net.inet.sctp.path_rtx_max: 5
net.inet.sctp.assoc_rtx_max: 10
net.inet.sctp.init_rtx_max: 8
net.inet.sctp.valid_cookie_life: 60000
net.inet.sctp.init_rto_max: 60000
net.inet.sctp.rto_initial: 3000
net.inet.sctp.rto_min: 1000
net.inet.sctp.rto_max: 60000
```

```
net.inet.sctp.secret_lifetime: 3600
net.inet.sctp.shutdown_guard_time: 180
net.inet.sctp.pmtu_raise_time: 600
net.inet.sctp.heartbeat_interval: 30000
net.inet.sctp.asoc_resource: 10
net.inet.sctp.sys_resource: 1000
net.inet.sctp.sack_freq: 2
net.inet.sctp.delayed_sack_time: 200
net.inet.sctp.chunkscale: 10
net.inet.sctp.min_split_point: 2904
net.inet.sctp.pcbhashsize: 256
net.inet.sctp.tcbhashsize: 1024
net.inet.sctp.maxchunks: 62796
net.inet.sctp.fr_maxburst: 4
net.inet.sctp.maxburst: 4
net.inet.sctp.peer_chkoh: 256
net.inet.sctp.strict_sacks: 1
net.inet.sctp.ecn_enable: 1
net.inet.sctp.auto_asconf: 1
net.inet.sctp.recvspace: 1864135
net.inet.sctp.sendspace: 1864135
net.inet.raw.recvspace: 9216
net.inet.raw.maxdgram: 9216
net.inet.accf.unloadable: 0
net.link.generic.system.ifcount: 6
net.link.ether.inet.allow_multicast: 0
net.link.ether.inet.log_arp_permanent_modify: 1
net.link.ether.inet.log_arp_movements: 1
net.link.ether.inet.log_arp_wrong_iface: 1
net.link.ether.inet.maxhold: 1
net.link.ether.inet.wait: 20
net.link.ether.inet.proxyall: 0
net.link.ether.inet.useloopback: 1
net.link.ether.inet.maxtries: 5
net.link.ether.inet.max_age: 1200
net.link.ether.ipfw: 0
net.link.vlan.soft_pad: 0
net.link.gif.parallel_tunnels: 0
net.link.gif.max_nesting: 1
net.link.log_link_state_change: 1
net.link.ifqmaxlen: 50
net.link.tun.devfs_cloning: 1
net.inet6.ip6.forwarding: 0
net.inet6.ip6.redirect: 1
net.inet6.ip6.hlim: 64
net.inet6.ip6.maxfragpackets: 125592
net.inet6.ip6.accept_rtadv: 0
net.inet6.ip6.keepfaith: 0
net.inet6.ip6.log_interval: 5
net.inet6.ip6.hdrnestlimit: 15
net.inet6.ip6.dad_count: 1
net.inet6.ip6.auto_flowlabel: 1
net.inet6.ip6.defmcasthlim: 1
net.inet6.ip6.gifhlim: 30
net.inet6.ip6.kame_version: FreeBSD
net.inet6.ip6.use_deprecated: 1
net.inet6.ip6.rr_prune: 5
net.inet6.ip6.v6only: 1
net.inet6.ip6.rtmocache: 128
net.inet6.ip6.use_tempaddr: 0
net.inet6.ip6.tempitime: 86400
net.inet6.ip6.tempvltime: 604800
net.inet6.ip6.auto_linklocal: 1
net.inet6.ip6.prefer_tempaddr: 0
net.inet6.ip6.use_defaultzone: 0
net.inet6.ip6.maxfrags: 125592
net.inet6.ip6.mcast_pmtu: 0
net.inet6.ip6.no_radr: 0
net.inet6.ip6.norbit_raif: 0
net.inet6.ip6.rfc6204w3: 0
net.inet6.ip6.mcast.loop: 1
net.inet6.ip6.mcast.maxsocksrc: 128
net.inet6.ip6.mcast.maxgrpsrc: 512
net.inet6.icmp6.rediraccept: 1
net.inet6.icmp6.redirtimeout: 600
net.inet6.icmp6.nd6_prune: 1
net.inet6.icmp6.nd6_delay: 5
net.inet6.icmp6.nd6_umaxtries: 3
net.inet6.icmp6.nd6_mmaxtries: 3
net.inet6.icmp6.nd6_useloopback: 1
net.inet6.icmp6.nodeinfo: 3
net.inet6.icmp6.errppslimit: 100
net.inet6.icmp6.nd6_maxnudhint: 0
net.inet6.icmp6.nd6_debug: 0
net.inet6.icmp6.nd6_maxqueuehlen: 1
net.inet6.icmp6.nodeinfo_oldmcprefix: 1
net.inet6.icmp6.nd6_onlink_ns_rfc4861: 0
net.inet6.mld.use_allow: 1
net.inet6.mld.vlenable: 1
net.inet6.mld.gsrdelay: 10
net.bpf.optimize_writers: 0
```

```
net.bpf.zerocopy_enable: 0
net.bpf.maxinsns: 512
net.bpf.maxbufsize: 524288
net.bpf.bufsize: 4096
net.ifdescr_maxlen: 1024
net.isr.numthreads: 1
net.isr.maxprot: 16
net.isr.defaultqlimit: 256
net.isr.maxqlimit: 10240
net.isr.bindthreads: 0
net.isr.maxthreads: 1
net.isr.direct: 0
net.isr.direct_force: 0
net.isr.dispatch: direct
net.raw.recvspace: 8192
net.raw.sendspace: 8192
net.my_fibnum: 0
net.add_addr_allfibs: 1
net.fibs: 1
net.route.netisr_maxqlen: 256
net.wlan.cac_timeout: 60
net.wlan.nol_timeout: 1800
net.wlan.debug: 0
net.wlan.addba_maxtries: 3
net.wlan.addba_backoff: 10000
net.wlan.addba_timeout: 250
net.wlan.recv_bar: 1
net.wlan.ampdu_age: 500
net.wlan.hwmp.inact: 5000
net.wlan.hwmp.rannint: 1000
net.wlan.hwmp.rootint: 2000
net.wlan.hwmp.roottimeout: 5000
net.wlan.hwmp.pathlifetime: 5000
net.wlan.hwmp.replyforward: 1
net.wlan.hwmp.targetonly: 0
net.wlan.mesh.maxretries: 2
net.wlan.mesh.confirmtimeout: 40
net.wlan.mesh.holdingtimeout: 40
net.wlan.mesh.retrytimeout: 40
debug.acpi.max_threads: 3
debug.acpi.max_tasks: 256
debug.acpi.suspend_bounce: 0
debug.acpi.reset_clock: 1
debug.acpi.interpreter_slack: 1
debug.acpi.enable_debug_objects: 0
debug.acpi.acpi_ca_version: 20110527
debug.acpi.cpu_unordered: 0
debug.acpi.ec.timeout: 750
debug.acpi.ec.pollled: 0
debug.acpi.ec.burst: 0
debug.acpi.batt.batt_sleep_ms: 0
debug.acpi.resume_beep: 0
debug.ipw: 0
debug.iwi: 0
debug.mddebug: 0
debug.wpi: 0
debug.elf64_legacy_core_dump: 0
debug.bootverbose: 0
debug.boothowto: 0
debug.cpufreq.verbose: 0
debug.cpufreq.lowest: 0
debug.fail_point.sysctl_running: off
debug.fail_point.buf_pressure: off
debug.fail_point.nlm_deny_grant: off
debug.adaptive_machine_arch: 1
debug.sizeof.cdev_priv: 376
debug.sizeof.cdev: 288
debug.sizeof.g_bioq: 56
debug.sizeof.g_consumer: 96
debug.sizeof.g_provider: 136
debug.sizeof.g_geom: 160
debug.sizeof.g_class: 160
debug.sizeof.kinfo_proc: 1088
debug.sizeof.buf: 616
debug.sizeof.bio: 248
debug.sizeof.proc: 1192
debug.sizeof.vnode: 504
debug.sizeof.devstat: 288
debug.sizeof.namecache: 72
debug.osd: 0
debug.trace_on_panic: 1
debug.debugger_on_panic: 1
debug.ncores: 5
debug.to_avg_mpcalls: 488
debug.to_avg_lockcalls: 183
debug.to_avg_gcalls: 508
debug.to_avg_depth: 1377
debug.umtx.umtx_pi_allocated: 0
debug.clocktime: 0
debug.kdb.alt_break_to_debugger: 0
debug.kdb.break_to_debugger: 0
```


debug.kdb.trap_code: 0
debug.kdb.trap: 0
debug.kdb.panic: 0
debug.kdb.enter: 0
debug.kdb.current:
debug.rman_debug: 0
debug.devfs_iosize_max_clamp: 1
debug.iosize_max_clamp: 1
debug.disablefullpath: 0
debug.disablecwd: 0
debug.vfscache: 1
debug.numcachehv: 46
debug.numcache: 310
debug.numneg: 19
debug.nchash: 262143
debug.vnlru_nowhere: 0
debug.rush_requests: 6260968
debug.vn_io_faults: 0
debug.vn_io_fault_enable: 0
debug.if_tun_debug: 0
debug.nlm_debug: 0
debug.fsckcmds: 0
debug.collectsnapstats: 0
debug.snapdebug: 0
debug.dopersistence: 0
debug.softdep.flushcache: 0
debug.softdep.cleanup_failures: 0
debug.softdep.cleanup_retries: 0
debug.softdep.cleanup_high_delay: 0
debug.softdep.cleanup_inorequests: 0
debug.softdep.cleanup_blkrequests: 0
debug.softdep.jwait_newblk: 937303
debug.softdep.jwait_inode: 1479082
debug.softdep.jwait_freeblks: 0
debug.softdep.jwait_filepage: 1301119
debug.softdep.journal_wait: 3717504
debug.softdep.journal_min: 4
debug.softdep.journal_low: 4560659
debug.softdep.jnewblk_rollback: 23608884
debug.softdep.jaddrf_rollback: 865923802
debug.softdep.dir_entry: 6855314
debug.softdep.direct_blk_ptrs: 6747004
debug.softdep.inode_bitmap: 81671088
debug.softdep.indir_blk_ptrs: 22922
debug.softdep.sync_limit_hit: 1226160
debug.softdep.ino_limit_hit: 0
debug.softdep.blk_limit_hit: 0
debug.softdep.ino_limit_push: 0
debug.softdep.blk_limit_push: 0
debug.softdep.worklist_push: 0
debug.softdep.maxindirdeps: 50
debug.softdep.tickdelay: 2
debug.softdep.max_softdeps: 851312
debug.softdep.write.jfsync: 0
debug.softdep.write.jtrunc: 0
debug.softdep.write.sbdep: 329320
debug.softdep.write.jsegdep: 817021
debug.softdep.write.jseg: 5408654
debug.softdep.write.jfreefrag: 0
debug.softdep.write.jfreeblk: 0
debug.softdep.write.jnewblk: 0
debug.softdep.write.jmvref: 0
debug.softdep.write.jremref: 0
debug.softdep.write.jaddrf: 0
debug.softdep.write.freedep: 0
debug.softdep.write.freework: 0
debug.softdep.write.newdirblk: 0
debug.softdep.write.dirrem: 0
debug.softdep.write.mkdir: 0
debug.softdep.write.diradd: 0
debug.softdep.write.freefile: 0
debug.softdep.write.freeblks: 7869368
debug.softdep.write.freefrag: 0
debug.softdep.write.allocindir: 398330327
debug.softdep.write.indirdep: 235797
debug.softdep.write.allocdirect: 4268475
debug.softdep.write.newblk: 0
debug.softdep.write.bmsafemap: 6733895
debug.softdep.write.inodedep: 6158405241
debug.softdep.write.pagedep: 12372721
debug.softdep.current.jfsync: 0
debug.softdep.current.jtrunc: 0
debug.softdep.current.sbdep: 0
debug.softdep.current.jsegdep: 10
debug.softdep.current.jseg: 3
debug.softdep.current.jfreefrag: 0
debug.softdep.current.jfreeblk: 0
debug.softdep.current.jnewblk: 8
debug.softdep.current.jmvref: 0
debug.softdep.current.jremref: 0
debug.softdep.current.jaddrf: 1

debug.softdep.current.freedeep: 0
debug.softdep.current.freework: 1
debug.softdep.current.newdirblk: 0
debug.softdep.current.dirrem: 1
debug.softdep.current.mkdir: 0
debug.softdep.current.diradd: 1
debug.softdep.current.freefile: 0
debug.softdep.current.freeblks: 1
debug.softdep.current.freefrag: 4
debug.softdep.current.allocindir: 0
debug.softdep.current.indirdep: 0
debug.softdep.current.allocdirect: 4
debug.softdep.current.newblk: 0
debug.softdep.current.bmsafemap: 2
debug.softdep.current.inodedep: 2
debug.softdep.current.pagedep: 4
debug.softdep.highuse.jfsync: 0
debug.softdep.highuse.jtrunc: 0
debug.softdep.highuse.sbdep: 1
debug.softdep.highuse.jsegdep: 332505
debug.softdep.highuse.jseg: 20351
debug.softdep.highuse.jfreefrag: 36
debug.softdep.highuse.jfreeblk: 0
debug.softdep.highuse.jnewblk: 66125
debug.softdep.highuse.jmvref: 0
debug.softdep.highuse.jremref: 46247
debug.softdep.highuse.jaddrf: 34764
debug.softdep.highuse.freedeep: 214
debug.softdep.highuse.freework: 85567
debug.softdep.highuse.newdirblk: 3314
debug.softdep.highuse.dirrem: 195822
debug.softdep.highuse.mkdir: 6600
debug.softdep.highuse.diradd: 18696
debug.softdep.highuse.freefile: 320941
debug.softdep.highuse.freeblks: 83147
debug.softdep.highuse.freefrag: 465
debug.softdep.highuse.allocindir: 237925
debug.softdep.highuse.indirdep: 96
debug.softdep.highuse.allocdirect: 8722
debug.softdep.highuse.newblk: 36
debug.softdep.highuse.bmsafemap: 168
debug.softdep.highuse.inodedep: 332320
debug.softdep.highuse.pagedep: 3320
debug.softdep.total.jfsync: 0
debug.softdep.total.jtrunc: 0
debug.softdep.total.sbdep: 326899
debug.softdep.total.jsegdep: 14245549084
debug.softdep.total.jseg: 5462971
debug.softdep.total.jfreefrag: 28805254
debug.softdep.total.jfreeblk: 0
debug.softdep.total.jnewblk: 2060121871
debug.softdep.total.jmvref: 0
debug.softdep.total.jremref: 6078310733
debug.softdep.total.jaddrf: 6078311226
debug.softdep.total.freedeep: 155485
debug.softdep.total.freework: 1672325254
debug.softdep.total.newdirblk: 1631372333
debug.softdep.total.dirrem: 2827587003
debug.softdep.total.mkdir: 3250723810
debug.softdep.total.diradd: 2827587416
debug.softdep.total.freefile: 2827585234
debug.softdep.total.freeblks: 1625412652
debug.softdep.total.freefrag: 28805254
debug.softdep.total.allocindir: 423610583
debug.softdep.total.indirdep: 340534
debug.softdep.total.allocdirect: 1636511289
debug.softdep.total.newblk: 2060121872
debug.softdep.total.bmsafemap: 2827929108
debug.softdep.total.inodedep: 2847988388
debug.softdep.total.pagedep: 1630426096
debug.dobkgrdwrite: 1
debug.bigcgs: 0
debug.dircheck: 0
debug.psm.pkterrthresh: 2
debug.psm.usecs: 500000
debug.psm.secs: 0
debug.psm.errusecs: 0
debug.psm.errsecs: 2
debug.psm.hz: 20
debug.psm.loglevel: 0
debug.vesa.shadow_rom: 0
debug.fdc.settle: 0
debug.fdc.spec2: 16
debug.fdc.spec1: 175
debug.fdc.retries: 10
debug.fdc.debugflags: 0
debug.fdc.fifo: 8
debug.elf32_legacy_coredump: 0
debug.x86bios.int: 0
debug.x86bios.call: 0
debug.hwpstate_verbos: 0

debug.minidump: 1
hw.machine: amd64
hw.model: Intel(R) Pentium(R) CPU G3240 @ 3.10GHz
hw.ncpu: 2
hw.byteorder: 1234
hw.physmem: 8506986496
hw.usermem: 8286388224
hw.pagesize: 4096
hw.floatingpoint: 1
hw.machine_arch: amd64
hw.realmem: 9395240960
hw.aac.enable_msi: 1
hw.amr.force_sg32: 0
hw.an.an_cache_iponly: 1
hw.an.an_cache_mcastonly: 0
hw.an.an_cache_mode: dbm
hw.an.an_dump: off
hw.ata.ata_dma_check_80pin: 1
hw.ath.bstuck: 4
hw.ath.txbuf: 200
hw.ath.rxbuf: 40
hw.ath.anical: 100
hw.ath.resetcal: 1200
hw.ath.shortcal: 100
hw.ath.longcal: 30
hw.bce.rx_ticks: 18
hw.bce.rx_ticks_int: 18
hw.bce.rx_quick_cons_trip: 6
hw.bce.rx_quick_cons_trip_int: 6
hw.bce.tx_ticks: 80
hw.bce.tx_ticks_int: 80
hw.bce.tx_quick_cons_trip: 20
hw.bce.tx_quick_cons_trip_int: 20
hw.bce.loose_rx_mtu: 0
hw.bce.hdr_split: 1
hw.bce.tx_pages: 2
hw.bce.rx_pages: 2
hw.bce.msi_enable: 1
hw.bce.tso_enable: 1
hw.bce.verbose: 1
hw.bge.allow_asf: 1
hw.cardbus.cis_debug: 0
hw.cardbus.debug: 0
hw.cs.recv_delay: 570
hw.cs.ignore_checksum_failure: 0
hw.em.eee_setting: 1
hw.em.rx_process_limit: 100
hw.em.enable_msix: 1
hw.em.sbp: 0
hw.em.smart_pwr_down: 0
hw.em.txd: 1024
hw.em.rxd: 1024
hw.em.rx_abs_int_delay: 66
hw.em.tx_abs_int_delay: 66
hw.em.rx_int_delay: 0
hw.em.tx_int_delay: 66
hw.igb.rx_process_limit: 100
hw.igb.num_queues: 0
hw.igb.header_split: 0
hw.igb.buf_ring_size: 4096
hw.igb.max_interrupt_rate: 8000
hw.igb.enable_msix: 1
hw.igb.enable_aim: 1
hw.igb.txd: 1024
hw.igb.rxd: 1024
hw.ix.rxd: 2048
hw.ix.txd: 2048
hw.ix.num_queues: 0
hw.ix.enable_msix: 1
hw.ix.tx_process_limit: 256
hw.ix.rx_process_limit: 256
hw.ix.max_interrupt_rate: 31250
hw.ix.enable_aim: 1
hw.malo.txbuf: 256
hw.malo.rxquota: 256
hw.malo.rxbuf: 256
hw.malo.txcoalesce: 8
hw.malo.pci.msi_disable: 0
hw.mwl.rxdmalow: 3
hw.mwl.rxquota: 640
hw.mwl.txcoalesce: 8
hw.mwl.txbuf: 256
hw.mwl.rxbuf: 640
hw.mwl.rxdesc: 256
hw.pccard.cis_debug: 0
hw.pccard.debug: 0
hw.cbb.debug: 0
hw.cbb.start_32_io: 4096
hw.cbb.start_16_io: 256
hw.cbb.start_memory: 2281701376
hw.pci.pd6722_vsense: 1

```

hw.pci.intr_mask: 57016
hw.pci.clearBars: 0
hw.pci.usb_early_takeover: 1
hw.pci.honor_msi_blacklist: 1
hw.pci.enable_msix: 1
hw.pci.enable_msi: 1
hw.pci.do_power_suspend: 1
hw.pci.do_power_resume: 1
hw.pci.do_power_nodriver: 0
hw.pci.realloc_bars: 0
hw.pci.enable_io_modes: 1
hw.pci.clear_pcib: 0
hw.pci.default_vgapci_unit: 0
hw.pci.mcfg: 1
hw.pci.host_mem_start: 2147483648
hw.snd.vpc_reset: 0
hw.snd.vpc_0db: 45
hw.snd.vpc_autoreset: 1
hw.snd.latency_profile: 1
hw.snd.latency: 5
hw.snd.report_soft_matrix: 1
hw.snd.report_soft_formats: 1
hw.snd.compat_linux_mmap: 0
hw.snd.feeder_eq_exact_rate: 0
hw.snd.feeder_eq_presets: PEQ:16000,0.2500,62,0.2500:-9,9,1.0:44100,48000,88200,96000,176400,192000
hw.snd.feeder_rate_quality: 1
hw.snd.feeder_rate_round: 25
hw.snd.feeder_rate_max: 2016000
hw.snd.feeder_rate_min: 1
hw.snd.feeder_rate_polyphase_max: 183040
hw.snd.feeder_rate_presets: 100:8:0.85 100:36:0.92 100:164:0.97
hw.snd.vpc_mixer_bypass: 1
hw.snd.verbose: 0
hw.snd.maxautovchans: 16
hw.snd.default_unit: -1
hw.snd.version: 2009061500/amd64
hw.snd.default_auto: -1
hw.midi.instrloff: 0
hw.midi.dumpraw: 0
hw.midi.debug: 0
hw.midi.stat.verbose: 0
hw.midi.seq.debug: 0
hw.syscons.sc_no_suspend_vtswitch: 0
hw.syscons.kbd_debug: 1
hw.syscons.kbd_reboot: 1
hw.syscons.bell: 1
hw.syscons.saver.keybonly: 1
hw.broken_txfifo: 0
hw.usb.uaudio.default_channels: 0
hw.usb.uaudio.default_bits: 32
hw.usb.uaudio.default_rate: 0
hw.usb.uaudio.debug: 0
hw.usb.ehci.lostintrbug: 0
hw.usb.ehci.iaadbug: 0
hw.usb.ehci.no_hs: 0
hw.usb.ehci.debug: 0
hw.usb.ohci.debug: 0
hw.usb.uhci.loop: 0
hw.usb.uhci.debug: 0
hw.usb.xhci.xhci_port_route: 0
hw.usb.xhci.debug: 0
hw.usb.no_shutdown_wait: 0
hw.usb.no_suspend_wait: 0
hw.usb.no_boot_wait: 0
hw.usb.ctrl.debug: 0
hw.usb.umass.throttle: 0
hw.usb.umass.debug: 0
hw.usb.urio.debug: 0
hw.usb.timings.extra_power_up_time: 20
hw.usb.timings.resume_recovery: 50
hw.usb.timings.resume_wait: 50
hw.usb.timings.resume_delay: 250
hw.usb.timings.set_address_settle: 10
hw.usb.timings.port_resume_delay: 40
hw.usb.timings.port_powerup_delay: 300
hw.usb.timings.port_reset_recovery: 250
hw.usb.timings.port_root_reset_delay: 250
hw.usb.timings.port_reset_delay: 50
hw.usb.debug: 0
hw.usb.dev.debug: 0
hw.usb.usb_lang_mask: 255
hw.usb.usb_lang_id: 9
hw.usb.template: 0
hw.usb.ugen.debug: 0
hw.usb.power_timeout: 30
hw.usb.uhub.debug: 0
hw.usb.no_pf: 0
hw.usb.proc.debug: 0
hw.usb.full_ddesc: 0
hw.usb.no_cs_fail: 0
hw.usb.aue.debug: 0

```

hw.usb.axe.debug: 0
hw.usb.cdce.interval: 0
hw.usb.cdce.debug: 0
hw.usb.cue.debug: 0
hw.usb.kue.debug: 0
hw.usb.rue.debug: 0
hw.usb.udav.debug: 0
hw.usb.rum.debug: 0
hw.usb.run.debug: 0
hw.usb.uath.regdomain: 0
hw.usb.uath.countrycode: 0
hw.usb.ural.debug: 0
hw.usb.urtw.preamble_mode: 2
hw.usb.zyd.debug: 0
hw.usb.u3g.debug: 0
hw.usb.ubsa.debug: 0
hw.usb.uftdi.debug: 0
hw.usb.ulpt.debug: 0
hw.usb.uplcom.debug: 0
hw.usb.uslcom.debug: 0
hw.usb.uvisor.debug: 0
hw.usb.uvscm.debug: 0
hw.usb.ucom.cons_baud: 9600
hw.usb.ucom.cons_subunit: 0
hw.usb.ucom.cons_unit: -1
hw.usb.ucom.debug: 0
hw.usb.uhid.debug: 0
hw.usb.ukbd.no_leds: 0
hw.usb.ukbd.debug: 0
hw.usb.ums.debug: 0
hw.wi.debug: 0
hw.wi.txerate: 0
hw.xe.debug: 0
hw.intr_storm_threshold: 1000
hw.pagesizes: 4096 2097152 0
hw.availpages: 2076901
hw.bus.devctl_queue: 1000
hw.bus.devctl_disable: 0
hw.clockrate: 3092
hw.via_feature_xcrypt: 0
hw.via_feature_rng: 0
hw.instruction_sse: 1
hw.psm.tap_timeout: 125000
hw.psm.tap_threshold: 25
hw.psm.tap_enabled: -1
hw.bxe.udp_rss: 0
hw.bxe.autogreen: 0
hw.bxe.mrrs: -1
hw.bxe.max_aggregation_size: 0
hw.bxe.rx_budget: -1
hw.bxe.hc_tx_ticks: 50
hw.bxe.hc_rx_ticks: 25
hw.bxe.max_rx_bufs: 0
hw.bxe.queue_count: 4
hw.bxe.interrupt_mode: 2
hw.bxe.debug: 0
hw.kbd.keymap_restrict_change: 0
hw.busdma.total_bpages: 1764
hw.busdma.zone0.total_bpages: 1764
hw.busdma.zone0.free_bpages: 1756
hw.busdma.zone0.reserved_bpages: 0
hw.busdma.zone0.active_bpages: 8
hw.busdma.zone0.total_bounced: 347
hw.busdma.zone0.total_deferred: 0
hw.busdma.zone0.lowaddr: 0xffffffff
hw.busdma.zone0.alignment: 4096
hw.apic.enable_extint: 0
hw.mca.erratum383: 0
hw.mca.amd10h_L1TP: 1
hw.mca.enabled: 1
hw.mca.count: 0
hw.mca.interval: 3600
hw.mca.force_scan: 0
hw.mca.cmc_throttle: 60
hw.acpi.supported_sleep_state: S4 S5
hw.acpi.power_button_state: S5
hw.acpi.sleep_button_state: S4
hw.acpi.lid_switch_state: NONE
hw.acpi.standby_state: NONE
hw.acpi.suspend_state: NONE
hw.acpi.sleep_delay: 1
hw.acpi.s4bios: 0
hw.acpi.verbose: 0
hw.acpi.disable_on_reboot: 0
hw.acpi.handle_reboot: 1
hw.acpi.reset_video: 0
hw.acpi.cpu.cx_lowest: C1
machdep.acpi_timer_freq: 3579545
machdep.enable_panic_key: 0
machdep.rtc_save_period: 1800
machdep.wall_cmos_clock: 1

```

machdep.adjkerntz: -32400
machdep.disable_rtc_set: 0
machdep.disable_mtrrs: 0
machdep.idle: acpi
machdep.idle_available: spin, mwait, hlt, acpi
machdep.idle_mwait: 1
machdep.max_ldt_segment: 1024
machdep.uprintf_signal: 0
machdep.prot_fault_translation: 0
machdep.panic_on_nmi: 1
machdep.kdb_on_nmi: 1
machdep.acpi_root: 984208
machdep.i8254_freq: 1193182
machdep.tsc_freq: 3092898748
machdep.disable_tsc_calibration: 0
machdep.disable_tsc: 0
user.cs_path: /usr/bin:/bin:/usr/sbin:/sbin
user.bc_base_max: 99
user.bc_dim_max: 2048
user.bc_scale_max: 99
user.bc_string_max: 1000
user.coll_weights_max: 0
user.expr_nest_max: 32
user.line_max: 2048
user.re_dup_max: 255
user.posix2_version: 199212
user.posix2_c_bind: 0
user.posix2_c_dev: 0
user.posix2_char_term: 0
user.posix2_fort_dev: 0
user.posix2_fort_run: 0
user.posix2_localedef: 0
user.posix2_sw_dev: 0
user.posix2_upe: 0
user.stream_max: 20
user.tzname_max: 255
p1003_1b.asynchronous_io: 0
p1003_1b.mapped_files: 200112
p1003_1b.memlock: 0
p1003_1b.memlock_range: 0
p1003_1b.memory_protection: 0
p1003_1b.message_passing: 0
p1003_1b.prioritized_io: 0
p1003_1b.priority_scheduling: 200112
p1003_1b.realtime_signals: 200112
p1003_1b.semaphores: 0
p1003_1b.fsync: 200112
p1003_1b.shared_memory_objects: 200112
p1003_1b.synchronized_io: 0
p1003_1b.timers: 200112
p1003_1b.aio_listio_max: -1
p1003_1b.aio_max: -1
p1003_1b.aio_prio_delta_max: -1
p1003_1b.delaytimer_max: 2147483647
p1003_1b.mq_open_max: 0
p1003_1b.pagesize: 4096
p1003_1b.rtsig_max: 62
p1003_1b.sem_nsems_max: 0
p1003_1b.sem_value_max: 0
p1003_1b.sigqueue_max: 128
p1003_1b.timer_max: 32
security.jail.param.allow.mount.zfs: 0
security.jail.param.allow.mount.procs: 0
security.jail.param.allow.mount.nullfs: 0
security.jail.param.allow.mount.devfs: 0
security.jail.param.allow.mount.: 0
security.jail.param.allow.socket_af: 0
security.jail.param.allow.quotas: 0
security.jail.param.allow.chflags: 0
security.jail.param.allow.raw_sockets: 0
security.jail.param.allow.sysvipc: 0
security.jail.param.allow.set_hostname: 0
security.jail.param.ip6.saddrsel: 0
security.jail.param.ip6.: 0
security.jail.param.ip4.saddrsel: 0
security.jail.param.ip4.: 0
security.jail.param.cpuset.id: 0
security.jail.param.host.hostid: 0
security.jail.param.host.hostuid: 64
security.jail.param.host.domainname: 256
security.jail.param.host.hostname: 256
security.jail.param.host.: 0
security.jail.param.children.max: 0
security.jail.param.children.cur: 0
security.jail.param.dying: 0
security.jail.param.persist: 0
security.jail.param.devfs_ruleset: 0
security.jail.param.enforce_statfs: 0
security.jail.param.securelevel: 0
security.jail.param.path: 1024
security.jail.param.name: 256

```

```

security.jail.param.parent: 0
security.jail.param.jid: 0
security.jail.devfs_ruleset: 0
security.jail.enforce_stats: 2
security.jail.mount_zfs_allowed: 0
security.jail.mount_procfs_allowed: 0
security.jail.mount_nullfs_allowed: 0
security.jail.mount_devfs_allowed: 0
security.jail.mount_allowed: 0
security.jail.chflags_allowed: 0
security.jail.allow_raw_sockets: 0
security.jail.sysvipc_allowed: 0
security.jail.socket_unixiproute_only: 1
security.jail.set_hostname_allowed: 1
security.jail.jail_max_af_ips: 255
security.jail.vnet: 0
security.jail.jailed: 0
security.bsd.map_at_zero: 0
security.bsd.unprivileged_mlock: 0
security.bsd.suser_enabled: 1
security.bsd.unprivileged_proc_debug: 1
security.bsd.conservative_signals: 1
security.bsd.see_other_gids: 1
security.bsd.see_other_uids: 1
security.bsd.unprivileged_idprio: 0
security.bsd.unprivileged_read_msgbuf: 1
security.bsd.hardlink_check_gid: 0
security.bsd.hardlink_check_uid: 0
security.bsd.unprivileged_get_quota: 0
security.bsd.stack_guard_page: 0
security.mac.labeled: 0
security.mac.max_slots: 4
security.mac.version: 4
security.mac.mmap_revocation_via_cow: 0
security.mac.mmap_revocation: 1
compat.ia32.maxvmem: 0
compat.ia32.maxssiz: 67108864
compat.ia32.maxdsiz: 536870912
dev.nexus.0.%driver: nexus
dev.nexus.0.%parent: root0
dev.ram.0.%desc: System RAM
dev.ram.0.%driver: ram
dev.ram.0.%parent: nexus0
dev.acpi.0.%desc: AMI 06A0
dev.acpi.0.%driver: acpi
dev.acpi.0.%parent: nexus0
dev.acpi_sysresource.0.%desc: System Resource
dev.acpi_sysresource.0.%driver: acpi_sysresource
dev.acpi_sysresource.0.%location: handle=\_SB_.PCI0.TPMX
dev.acpi_sysresource.0.%pnpinfo: _HID=PNP0C01 _UID=1
dev.acpi_sysresource.0.%parent: acpi0
dev.acpi_sysresource.1.%desc: System Resource
dev.acpi_sysresource.1.%driver: acpi_sysresource
dev.acpi_sysresource.1.%location: handle=\_SB_.PCI0.LPCB.LDR2
dev.acpi_sysresource.1.%pnpinfo: _HID=PNP0C02 _UID=2
dev.acpi_sysresource.1.%parent: acpi0
dev.acpi_sysresource.2.%desc: System Resource
dev.acpi_sysresource.2.%driver: acpi_sysresource
dev.acpi_sysresource.2.%location: handle=\_SB_.PCI0.LPCB.LDR2
dev.acpi_sysresource.2.%pnpinfo: _HID=PNP0C02 _UID=5
dev.acpi_sysresource.2.%parent: acpi0
dev.acpi_sysresource.3.%desc: System Resource
dev.acpi_sysresource.3.%driver: acpi_sysresource
dev.acpi_sysresource.3.%location: handle=\_SB_.PCI0.LPCB.CWDT
dev.acpi_sysresource.3.%pnpinfo: _HID=INT3F0D _UID=0
dev.acpi_sysresource.3.%parent: acpi0
dev.acpi_sysresource.4.%desc: System Resource
dev.acpi_sysresource.4.%driver: acpi_sysresource
dev.acpi_sysresource.4.%location: handle=\_SB_.PCI0.LPCB.SIO1
dev.acpi_sysresource.4.%pnpinfo: _HID=PNP0C02 _UID=78
dev.acpi_sysresource.4.%parent: acpi0
dev.acpi_sysresource.5.%desc: System Resource
dev.acpi_sysresource.5.%driver: acpi_sysresource
dev.acpi_sysresource.5.%location: handle=\_SB_.PCI0.LPCB.RMSC
dev.acpi_sysresource.5.%pnpinfo: _HID=PNP0C02 _UID=16
dev.acpi_sysresource.5.%parent: acpi0
dev.acpi_sysresource.6.%desc: System Resource
dev.acpi_sysresource.6.%driver: acpi_sysresource
dev.acpi_sysresource.6.%location: handle=\_SB_.PCI0.LPCB.MBRD
dev.acpi_sysresource.6.%pnpinfo: _HID=PNP0C02 _UID=31
dev.acpi_sysresource.6.%parent: acpi0
dev.acpi_sysresource.7.%desc: System Resource
dev.acpi_sysresource.7.%driver: acpi_sysresource
dev.acpi_sysresource.7.%location: handle=\_SB_.PCI0.RP05.PPF1
dev.acpi_sysresource.7.%pnpinfo: _HID=PNP0C01 _UID=241
dev.acpi_sysresource.7.%parent: acpi0
dev.acpi_sysresource.8.%desc: System Resource
dev.acpi_sysresource.8.%driver: acpi_sysresource
dev.acpi_sysresource.8.%location: handle=\_SB_.PCI0.PDR2
dev.acpi_sysresource.8.%pnpinfo: _HID=PNP0C02 _UID=1
dev.acpi_sysresource.8.%parent: acpi0

```

```

dev.cpu.0.%desc: ACPI CPU
dev.cpu.0.%driver: cpu
dev.cpu.0.%location: handle=\_PR_.CPU0
dev.cpu.0.%pnpinfo: _HID=none _UID=0
dev.cpu.0.%parent: acpi0
dev.cpu.0.%freq: 3100
dev.cpu.0.%freq_levels: 3100/53000 2900/48172 2800/46082 2600/41518 2500/39557 2300/35732 2200/33398 2000/29812 1900/28070 1700/24245
1600/22615 1400/19464 1300/17511 1137/15322 1100/14571 1000/13151 875/11507 800/10012 700/8760 600/7509 500/6257 400/5006 300/3754
200/2503 100/1251
dev.cpu.0.%cx_supported: C1/1/1 C2/2/117
dev.cpu.0.%cx_lowest: C1
dev.cpu.0.%cx_usage: 100.00% 0.00% last 2312us
dev.cpu.1.%desc: ACPI CPU
dev.cpu.1.%driver: cpu
dev.cpu.1.%location: handle=\_PR_.CPU1
dev.cpu.1.%pnpinfo: _HID=none _UID=0
dev.cpu.1.%parent: acpi0
dev.cpu.1.%cx_supported: C1/1/1
dev.cpu.1.%cx_lowest: C1
dev.cpu.1.%cx_usage: 100.00% last 36us
dev.hpet.0.%desc: High Precision Event Timer
dev.hpet.0.%driver: hpet
dev.hpet.0.%location: handle=\_SB_.PCI0.LPCB.HPET
dev.hpet.0.%pnpinfo: _HID=PNP0103 _UID=0
dev.hpet.0.%parent: acpi0
dev.atrtc.0.%desc: AT realtime clock
dev.atrtc.0.%driver: atrtc
dev.atrtc.0.%location: handle=\_SB_.PCI0.LPCB.RTC_
dev.atrtc.0.%pnpinfo: _HID=PNP0B00 _UID=0
dev.atrtc.0.%parent: acpi0
dev.attimer.0.%desc: AT timer
dev.attimer.0.%driver: attimer
dev.attimer.0.%location: handle=\_SB_.PCI0.LPCB.TIMR
dev.attimer.0.%pnpinfo: _HID=PNP0100 _UID=0
dev.attimer.0.%parent: acpi0
dev.acpi_timer.0.%desc: 24-bit timer at 3.579545MHz
dev.acpi_timer.0.%driver: acpi_timer
dev.acpi_timer.0.%location: unknown
dev.acpi_timer.0.%pnpinfo: unknown
dev.acpi_timer.0.%parent: acpi0
dev.pci_link.0.%desc: ACPI PCI Link LNKA
dev.pci_link.0.%driver: pci_link
dev.pci_link.0.%location: handle=\_SB_.LNKA
dev.pci_link.0.%pnpinfo: _HID=PNP0C0F _UID=1
dev.pci_link.0.%parent: acpi0
dev.pci_link.1.%desc: ACPI PCI Link LNKB
dev.pci_link.1.%driver: pci_link
dev.pci_link.1.%location: handle=\_SB_.LNKB
dev.pci_link.1.%pnpinfo: _HID=PNP0C0F _UID=2
dev.pci_link.1.%parent: acpi0
dev.pci_link.2.%desc: ACPI PCI Link LNKC
dev.pci_link.2.%driver: pci_link
dev.pci_link.2.%location: handle=\_SB_.LNKC
dev.pci_link.2.%pnpinfo: _HID=PNP0C0F _UID=3
dev.pci_link.2.%parent: acpi0
dev.pci_link.3.%desc: ACPI PCI Link LNKD
dev.pci_link.3.%driver: pci_link
dev.pci_link.3.%location: handle=\_SB_.LNKD
dev.pci_link.3.%pnpinfo: _HID=PNP0C0F _UID=4
dev.pci_link.3.%parent: acpi0
dev.pci_link.4.%desc: ACPI PCI Link LNKE
dev.pci_link.4.%driver: pci_link
dev.pci_link.4.%location: handle=\_SB_.LNKE
dev.pci_link.4.%pnpinfo: _HID=PNP0C0F _UID=5
dev.pci_link.4.%parent: acpi0
dev.pci_link.5.%desc: ACPI PCI Link LNKF
dev.pci_link.5.%driver: pci_link
dev.pci_link.5.%location: handle=\_SB_.LNKF
dev.pci_link.5.%pnpinfo: _HID=PNP0C0F _UID=6
dev.pci_link.5.%parent: acpi0
dev.pci_link.6.%desc: ACPI PCI Link LNKG
dev.pci_link.6.%driver: pci_link
dev.pci_link.6.%location: handle=\_SB_.LNKG
dev.pci_link.6.%pnpinfo: _HID=PNP0C0F _UID=7
dev.pci_link.6.%parent: acpi0
dev.pci_link.7.%desc: ACPI PCI Link LNKH
dev.pci_link.7.%driver: pci_link
dev.pci_link.7.%location: handle=\_SB_.LNKH
dev.pci_link.7.%pnpinfo: _HID=PNP0C0F _UID=8
dev.pci_link.7.%parent: acpi0
dev.pci.0.%desc: ACPI Host-PCI bridge
dev.pci.0.%driver: pci
dev.pci.0.%location: handle=\_SB_.PCI0
dev.pci.0.%pnpinfo: _HID=PNP0A08 _UID=0
dev.pci.0.%parent: acpi0
dev.pci.1.%desc: ACPI PCI-PCI bridge
dev.pci.1.%driver: pci
dev.pci.1.%location: slot=28 function=0 handle=\_SB_.PCI0.RP01
dev.pci.1.%pnpinfo: vendor=0x8086 device=0x8c10 subvendor=0x1bcf subdevice=0x8038 class=0x060400
dev.pci.1.%parent: pci0
dev.pci.1.%domain: 0

```



```

dev.pci.1.pribus: 0
dev.pci.1.secbus: 33
dev.pci.1.subbus: 56
dev.pci.1.wake: 0
dev.pci.2.%desc: ACPI PCI-PCI bridge
dev.pci.2.%driver: pci
dev.pci.2.%location: slot=28 function=4 handle=_SB_.PCI0.RP05
dev.pci.2.%pnpinfo: vendor=0x8086 device=0x8c18 subvendor=0x1bcf subdevice=0x8038 class=0x060400
dev.pci.2.%parent: pci0
dev.pci.2.domain: 0
dev.pci.2.pribus: 0
dev.pci.2.secbus: 57
dev.pci.2.subbus: 57
dev.pci.2.wake: 0
dev.pci.3.%desc: ACPI PCI-PCI bridge
dev.pci.3.%driver: pci
dev.pci.3.%location: slot=28 function=5 handle=_SB_.PCI0.RP06
dev.pci.3.%pnpinfo: vendor=0x8086 device=0x8c1a subvendor=0x1bcf subdevice=0x8038 class=0x060400
dev.pci.3.%parent: pci0
dev.pci.3.domain: 0
dev.pci.3.pribus: 0
dev.pci.3.secbus: 58
dev.pci.3.subbus: 64
dev.pci.3.wake: 0
dev.pci.0.%desc: ACPI PCI bus
dev.pci.0.%driver: pci
dev.pci.0.%parent: pci0
dev.pci.33.%desc: ACPI PCI bus
dev.pci.33.%driver: pci
dev.pci.33.%parent: pci1
dev.pci.33.wake: 0
dev.pci.57.%desc: ACPI PCI bus
dev.pci.57.%driver: pci
dev.pci.57.%parent: pci2
dev.pci.57.wake: 0
dev.pci.58.%desc: ACPI PCI bus
dev.pci.58.%driver: pci
dev.pci.58.%parent: pci3
dev.pci.58.wake: 0
dev.hostb.0.%desc: Host to PCI bridge
dev.hostb.0.%driver: hostb
dev.hostb.0.%location: slot=0 function=0
dev.hostb.0.%pnpinfo: vendor=0x8086 device=0x0c00 subvendor=0x1bcf subdevice=0x8038 class=0x060000
dev.hostb.0.%parent: pci0
dev.xhci.0.%desc: Intel Lynx Point USB 3.0 controller
dev.xhci.0.%driver: xhci
dev.xhci.0.%location: slot=20 function=0 handle=_SB_.PCI0.XHC_
dev.xhci.0.%pnpinfo: vendor=0x8086 device=0x8c31 subvendor=0x1bcf subdevice=0x8038 class=0x0c0330
dev.xhci.0.%parent: pci0
dev.xhci.0.wake: 0
dev.usbus.0.%driver: usb
dev.usbus.0.%parent: xhci0
dev.usbus.1.%driver: usb
dev.usbus.1.%parent: ehci0
dev.usbus.2.%driver: usb
dev.usbus.2.%parent: ehci1
dev.ehci.0.%desc: EHCI (generic) USB 2.0 controller
dev.ehci.0.%driver: ehci
dev.ehci.0.%location: slot=26 function=0 handle=_SB_.PCI0.EHC2
dev.ehci.0.%pnpinfo: vendor=0x8086 device=0x8c2d subvendor=0x1bcf subdevice=0x8038 class=0x0c0320
dev.ehci.0.%parent: pci0
dev.ehci.0.wake: 0
dev.ehci.1.%desc: EHCI (generic) USB 2.0 controller
dev.ehci.1.%driver: ehci
dev.ehci.1.%location: slot=29 function=0 handle=_SB_.PCI0.EHC1
dev.ehci.1.%pnpinfo: vendor=0x8086 device=0x8c26 subvendor=0x1bcf subdevice=0x8038 class=0x0c0320
dev.ehci.1.%parent: pci0
dev.ehci.1.wake: 0
dev.mrsas.0.%desc: LSI Thunderbolt SAS Controller
dev.mrsas.0.%driver: mrsas
dev.mrsas.0.%location: slot=0 function=0 handle=_SB_.PCI0.RP01.PXSX
dev.mrsas.0.%pnpinfo: vendor=0x1000 device=0x005b subvendor=0x1000 subdevice=0x9272 class=0x010400
dev.mrsas.0.%parent: pci33
dev.mrsas.0.disable_ocr: 0
dev.mrsas.0.driver_version: 06.704.01.00-fbsd
dev.mrsas.0.reset_count: 0
dev.mrsas.0.fw_outstanding: 0
dev.mrsas.0.io_cmds_highwater: 975
dev.mrsas.0.mrsas_debug: 4
dev.mrsas.0.mrsas_io_timeout: 180000
dev.mrsas.0.mrsas_fw_fault_check_delay: 1
dev.mrsas.0.reset_in_progress: 0
dev.mrsas.0.wake: 0
dev.vgapci.0.%desc: VGA-compatible display
dev.vgapci.0.%driver: vgapci
dev.vgapci.0.%location: slot=0 function=0 handle=_SB_.PCI0.RP05.PXSX
dev.vgapci.0.%pnpinfo: vendor=0x102b device=0x0522 subvendor=0x1bcf subdevice=0x8038 class=0x030000
dev.vgapci.0.%parent: pci57
dev.vgapci.0.wake: 0
dev.bge.0.%desc: Broadcom NetXtreme Gigabit Ethernet Controller, ASIC rev. 0x5717100
dev.bge.0.%driver: bge

```

```

dev.bge.0.%location: slot=0 function=0 handle=_SB_.PCI0.RP06.LAN1
dev.bge.0.%pnpinfo: vendor=0x14e4 device=0x1656 subvendor=0x1bcf subdevice=0x8038 class=0x020000
dev.bge.0.%parent: pci58
dev.bge.0.forced_collapse: 0
dev.bge.0.msi: 1
dev.bge.0.forced_udpcsum: 0
dev.bge.0.stats.FramesDroppedDueToFilters: 0
dev.bge.0.stats.DmaWriteQueueFull: 0
dev.bge.0.stats.DmaWriteHighPriQueueFull: 0
dev.bge.0.stats.NoMoreRxBDs: 0
dev.bge.0.stats.InputDiscards: 0
dev.bge.0.stats.InputErrors: 0
dev.bge.0.stats.RecvThresholdHit: 0
dev.bge.0.stats.rx.ifHCInOctets: 163719
dev.bge.0.stats.rx.Fragments: 0
dev.bge.0.stats.rx.UnicastPkts: 22
dev.bge.0.stats.rx.MulticastPkts: 667
dev.bge.0.stats.rx.BroadcastPkts: 614
dev.bge.0.stats.rx.FCSerrors: 0
dev.bge.0.stats.rx.AlignmentErrors: 0
dev.bge.0.stats.rx.xonPauseFramesReceived: 0
dev.bge.0.stats.rx.xoffPauseFramesReceived: 0
dev.bge.0.stats.rx.ControlFramesReceived: 0
dev.bge.0.stats.rx.xoffStateEntered: 0
dev.bge.0.stats.rx.FramesTooLong: 0
dev.bge.0.stats.rx.Jabbers: 0
dev.bge.0.stats.rx.UndersizePkts: 0
dev.bge.0.stats.tx.ifHCOutOctets: 3055
dev.bge.0.stats.tx.Collisions: 0
dev.bge.0.stats.tx.XonSent: 0
dev.bge.0.stats.tx.XoffSent: 0
dev.bge.0.stats.tx.InternalMacTransmitErrors: 0
dev.bge.0.stats.tx.SingleCollisionFrames: 0
dev.bge.0.stats.tx.MultipleCollisionFrames: 0
dev.bge.0.stats.tx.DeferredTransmissions: 0
dev.bge.0.stats.tx.ExcessiveCollisions: 0
dev.bge.0.stats.tx.LateCollisions: 0
dev.bge.0.stats.tx.UnicastPkts: 17
dev.bge.0.stats.tx.MulticastPkts: 0
dev.bge.0.stats.tx.BroadcastPkts: 8
dev.bge.1.%desc: Broadcom NetXtreme Gigabit Ethernet Controller, ASIC rev. 0x5717100
dev.bge.1.%driver: bge
dev.bge.1.%location: slot=0 function=1 handle=_SB_.PCI0.RP06.LAN2
dev.bge.1.%pnpinfo: vendor=0x14e4 device=0x1656 subvendor=0x1bcf subdevice=0x8038 class=0x020000
dev.bge.1.%parent: pci58
dev.bge.1.forced_collapse: 0
dev.bge.1.msi: 1
dev.bge.1.forced_udpcsum: 0
dev.bge.1.stats.FramesDroppedDueToFilters: 0
dev.bge.1.stats.DmaWriteQueueFull: 0
dev.bge.1.stats.DmaWriteHighPriQueueFull: 0
dev.bge.1.stats.NoMoreRxBDs: 0
dev.bge.1.stats.InputDiscards: 0
dev.bge.1.stats.InputErrors: 0
dev.bge.1.stats.RecvThresholdHit: 0
dev.bge.1.stats.rx.ifHCInOctets: 0
dev.bge.1.stats.rx.Fragments: 0
dev.bge.1.stats.rx.UnicastPkts: 0
dev.bge.1.stats.rx.MulticastPkts: 0
dev.bge.1.stats.rx.BroadcastPkts: 0
dev.bge.1.stats.rx.FCSerrors: 0
dev.bge.1.stats.rx.AlignmentErrors: 0
dev.bge.1.stats.rx.xonPauseFramesReceived: 0
dev.bge.1.stats.rx.xoffPauseFramesReceived: 0
dev.bge.1.stats.rx.ControlFramesReceived: 0
dev.bge.1.stats.rx.xoffStateEntered: 0
dev.bge.1.stats.rx.FramesTooLong: 0
dev.bge.1.stats.rx.Jabbers: 0
dev.bge.1.stats.rx.UndersizePkts: 0
dev.bge.1.stats.tx.ifHCOutOctets: 0
dev.bge.1.stats.tx.Collisions: 0
dev.bge.1.stats.tx.XonSent: 0
dev.bge.1.stats.tx.XoffSent: 0
dev.bge.1.stats.tx.InternalMacTransmitErrors: 0
dev.bge.1.stats.tx.SingleCollisionFrames: 0
dev.bge.1.stats.tx.MultipleCollisionFrames: 0
dev.bge.1.stats.tx.DeferredTransmissions: 0
dev.bge.1.stats.tx.ExcessiveCollisions: 0
dev.bge.1.stats.tx.LateCollisions: 0
dev.bge.1.stats.tx.UnicastPkts: 0
dev.bge.1.stats.tx.MulticastPkts: 0
dev.bge.1.stats.tx.BroadcastPkts: 0
dev.miibus.0.%desc: MII bus
dev.miibus.0.%driver: miibus
dev.miibus.0.%parent: bge0
dev.miibus.1.%desc: MII bus
dev.miibus.1.%driver: miibus
dev.miibus.1.%parent: bge1
dev.brgphy.0.%desc: BCM5717C 1000BASE-T media interface
dev.brgphy.0.%driver: brgphy
dev.brgphy.0.%location: phyno=1

```

```

dev.brgphy.0.%pnpinfo: oui=0x1be9 model=0x20 rev=0x0
dev.brgphy.0.%parent: miibus0
dev.brgphy.1.%desc: BCM5717C 1000BASE-T media interface
dev.brgphy.1.%driver: brgphy
dev.brgphy.1.%location: phyno=2
dev.brgphy.1.%pnpinfo: oui=0x1be9 model=0x20 rev=0x0
dev.brgphy.1.%parent: miibus1
dev.isab.0.%desc: PCI-ISA bridge
dev.isab.0.%driver: isab
dev.isab.0.%location: slot=31 function=0 handle=\_SB_.PCI0.LPCB
dev.isab.0.%pnpinfo: vendor=0x8086 device=0x8c54 subvendor=0x1bcf subdevice=0x8038 class=0x060100
dev.isab.0.%parent: pci0
dev.isa.0.%desc: ISA bus
dev.isa.0.%driver: isa
dev.isa.0.%parent: isab0
dev.atapci.0.%desc: Intel Lynx Point SATA300 controller
dev.atapci.0.%driver: atapci
dev.atapci.0.%location: slot=31 function=2 handle=\_SB_.PCI0.SAT0
dev.atapci.0.%pnpinfo: vendor=0x8086 device=0x8c00 subvendor=0x1bcf subdevice=0x8038 class=0x01018f
dev.atapci.0.%parent: pci0
dev.atapci.1.%desc: Intel Lynx Point SATA300 controller
dev.atapci.1.%driver: atapci
dev.atapci.1.%location: slot=31 function=5 handle=\_SB_.PCI0.SAT1
dev.atapci.1.%pnpinfo: vendor=0x8086 device=0x8c08 subvendor=0x1bcf subdevice=0x8038 class=0x010185
dev.atapci.1.%parent: pci0
dev.ata.2.%desc: ATA channel
dev.ata.2.%driver: ata
dev.ata.2.%location: channel=0
dev.ata.2.%parent: atapci0
dev.ata.3.%desc: ATA channel
dev.ata.3.%driver: ata
dev.ata.3.%location: channel=1
dev.ata.3.%parent: atapci0
dev.ata.4.%desc: ATA channel
dev.ata.4.%driver: ata
dev.ata.4.%location: channel=0
dev.ata.4.%parent: atapci1
dev.ata.5.%desc: ATA channel
dev.ata.5.%driver: ata
dev.ata.5.%location: channel=1
dev.ata.5.%parent: atapci1
dev.acpi_button.0.%desc: Sleep Button
dev.acpi_button.0.%driver: acpi_button
dev.acpi_button.0.%location: handle=\_SB_.SLPB
dev.acpi_button.0.%pnpinfo: _HID=PNP0C0E _UID=0
dev.acpi_button.0.%parent: acpi0
dev.acpi_button.1.%desc: Power Button
dev.acpi_button.1.%driver: acpi_button
dev.acpi_button.1.%location: handle=\_SB_.PWRB
dev.acpi_button.1.%pnpinfo: _HID=PNP0C0C _UID=0
dev.acpi_button.1.%parent: acpi0
dev.atdma.0.%desc: AT DMA controller
dev.atdma.0.%driver: atdma
dev.atdma.0.%location: handle=\_SB_.PCI0.LPCB.DMAC
dev.atdma.0.%pnpinfo: _HID=PNP0200 _UID=0
dev.atdma.0.%parent: acpi0
dev.fpuvnp.0.%desc: Legacy ISA coprocessor support
dev.fpuvnp.0.%driver: fpuvnp
dev.fpuvnp.0.%location: handle=\_SB_.PCI0.LPCB.MATH
dev.fpuvnp.0.%pnpinfo: _HID=PNP0C04 _UID=0
dev.fpuvnp.0.%parent: acpi0
dev.uart.0.%desc: 16550 or compatible
dev.uart.0.%driver: uart
dev.uart.0.%location: handle=\_SB_.PCI0.LPCB.UAR1
dev.uart.0.%pnpinfo: _HID=PNP0501 _UID=1
dev.uart.0.%parent: acpi0
dev.uart.0.wake: 0
dev.uart.1.%desc: 16550 or compatible
dev.uart.1.%driver: uart
dev.uart.1.%location: handle=\_SB_.PCI0.LPCB.UAR2
dev.uart.1.%pnpinfo: _HID=PNP0501 _UID=2
dev.uart.1.%parent: acpi0
dev.uart.1.wake: 0
dev.apic.0.%desc: APIC resources
dev.apic.0.%driver: apic
dev.apic.0.%parent: nexus0
dev.orm.0.%desc: ISA Option ROMs
dev.orm.0.%driver: orm
dev.orm.0.%parent: isa0
dev.sc.0.%desc: System console
dev.sc.0.%driver: sc
dev.sc.0.%parent: isa0
dev.vga.0.%desc: Generic ISA VGA
dev.vga.0.%driver: vga
dev.vga.0.%parent: isa0
dev.acpi_perf.0.%driver: acpi_perf
dev.acpi_perf.0.%parent: cpu0
dev.acpi_perf.1.%driver: acpi_perf
dev.acpi_perf.1.%parent: cpu1
dev.est.0.%desc: Enhanced SpeedStep Frequency Control
dev.est.0.%driver: est

```

```

dev.est.0.%parent: cpu0
dev.est.0.freq_settings: 3100/53000 2900/48172 2800/46082 2600/41518 2500/39557 2300/35732 2200/33398 2000/29812 1900/28070 1700/24245
1600/22615 1400/19464 1300/17511 1100/14571 1000/13151 800/10012
dev.est.1.%desc: Enhanced SpeedStep Frequency Control
dev.est.1.%driver: est
dev.est.1.%parent: cpu1
dev.est.1.freq_settings: 3100/53000 2900/48172 2800/46082 2600/41518 2500/39557 2300/35732 2200/33398 2000/29812 1900/28070 1700/24245
1600/22615 1400/19464 1300/17511 1100/14571 1000/13151 800/10012
dev.cpufreq.0.%driver: cpufreq
dev.cpufreq.0.%parent: cpu0
dev.cpufreq.1.%driver: cpufreq
dev.cpufreq.1.%parent: cpu1
dev.p4tcc.0.%desc: CPU Frequency Thermal Control
dev.p4tcc.0.%driver: p4tcc
dev.p4tcc.0.%parent: cpu0
dev.p4tcc.0.freq_settings: 10000/-1 8750/-1 7500/-1 6250/-1 5000/-1 3750/-1 2500/-1 1250/-1
dev.p4tcc.1.%desc: CPU Frequency Thermal Control
dev.p4tcc.1.%driver: p4tcc
dev.p4tcc.1.%parent: cpu1
dev.p4tcc.1.freq_settings: 10000/-1 8750/-1 7500/-1 6250/-1 5000/-1 3750/-1 2500/-1 1250/-1
dev.uhub.0.%desc: 0x8086 XHCI root HUB, class 9/0, rev 3.00/1.00, addr 1
dev.uhub.0.%driver: uhub
dev.uhub.0.%parent: usb0
dev.uhub.1.%desc: Intel EHCI root HUB, class 9/0, rev 2.00/1.00, addr 1
dev.uhub.1.%driver: uhub
dev.uhub.1.%parent: usb1
dev.uhub.2.%desc: Intel EHCI root HUB, class 9/0, rev 2.00/1.00, addr 1
dev.uhub.2.%driver: uhub
dev.uhub.2.%parent: usb2
dev.uhub.3.%desc: vendor 0x8087 product 0x8008, class 9/0, rev 2.00/0.04, addr 2
dev.uhub.3.%driver: uhub
dev.uhub.3.%location: bus=1 hubaddr=1 port=1 devaddr=2 interface=0
dev.uhub.3.%pnpinfo: vendor=0x8087 product=0x8008 devclass=0x09 devsubclass=0x00 sernum="" release=0x0004 mode=host intclass=0x09
intsubclass=0x00 intprotocol=0x00
dev.uhub.3.%parent: uhub1
dev.uhub.4.%desc: vendor 0x8087 product 0x8000, class 9/0, rev 2.00/0.04, addr 2
dev.uhub.4.%driver: uhub
dev.uhub.4.%location: bus=1 hubaddr=1 port=2 devaddr=2 interface=0
dev.uhub.4.%pnpinfo: vendor=0x8087 product=0x8000 devclass=0x09 devsubclass=0x00 sernum="" release=0x0004 mode=host intclass=0x09
intsubclass=0x00 intprotocol=0x00
dev.uhub.4.%parent: uhub2
dev.uhub.5.%desc: vendor 0x0409 product 0x005a, class 9/0, rev 2.00/1.00, addr 3
dev.uhub.5.%driver: uhub
dev.uhub.5.%location: bus=2 hubaddr=2 port=1 devaddr=3 interface=0
dev.uhub.5.%pnpinfo: vendor=0x0409 product=0x005a devclass=0x09 devsubclass=0x00 sernum="" release=0x0100 mode=host intclass=0x09
intsubclass=0x00 intprotocol=0x00
dev.uhub.5.%parent: uhub3
dev.ukbd.0.%desc: Topre Corporation HHKB Professional, class 0/0, rev 1.10/1.02, addr 4
dev.ukbd.0.%driver: ukbd
dev.ukbd.0.%location: bus=3 hubaddr=1 port=1 devaddr=4 interface=0
dev.ukbd.0.%pnpinfo: vendor=0x0853 product=0x0100 devclass=0x00 devsubclass=0x00 sernum="" release=0x0102 mode=host intclass=0x03
intsubclass=0x01 intprotocol=0x01
dev.ukbd.0.%parent: uhub5
dev.ukbd.1.%desc: Keyboard Interface
dev.ukbd.1.%driver: ukbd
dev.ukbd.1.%location: bus=2 hubaddr=3 port=1 devaddr=5 interface=0
dev.ukbd.1.%pnpinfo: vendor=0x046b product=0xff10 devclass=0x00 devsubclass=0x00 sernum="" release=0x0100 mode=host intclass=0x03
intsubclass=0x01 intprotocol=0x01
dev.ukbd.1.%parent: uhub3
dev.ums.0.%desc: Mouse Interface
dev.ums.0.%driver: ums
dev.ums.0.%location: bus=2 hubaddr=3 port=1 devaddr=5 interface=1
dev.ums.0.%pnpinfo: vendor=0x046b product=0xff10 devclass=0x00 devsubclass=0x00 sernum="" release=0x0100 mode=host intclass=0x03
intsubclass=0x01 intprotocol=0x02
dev.ums.0.%parent: uhub3
dev.ums.0.parseinfo: i1: Z:r0, p40, s8; B1:r0, p0, s1; B2:r0, p1, s1; B3:r0, p2, s1;
hptmv.status: RocketRAID 18xx SATA Controller driver Version v1.16

```

システム起動時メッセージ

```
bge0: link state changed to DOWN
bge0: link state changed to UP
Waiting (max 60 seconds) for system process `vnlru' to stop...done
Waiting (max 60 seconds) for system process `bufdaemon' to stop...done
Waiting (max 60 seconds) for system process `syncer' to stop...
Syncing disks, vnodes remaining...0 0 done
All buffers synced.
Copyright (c) 1992-2014 The FreeBSD Project.
Copyright (c) 1979, 1980, 1983, 1986, 1988, 1989, 1991, 1992, 1993, 1994
The Regents of the University of California. All rights reserved.
FreeBSD is a registered trademark of The FreeBSD Foundation.
FreeBSD 9.3-RELEASE #0: Tue Nov 24 17:20:35 JST 2015
root@verify.bsconsulting.co.jp:/usr/obj/usr/src/sys/GENERIC amd64
gcc version 4.2.1 20070831 patched [FreeBSD]
CPU: Intel(R) Pentium(R) CPU G3240 @ 3.10GHz (3092.90-MHz K8-class CPU)
Origin = "GenuineIntel" Id = 0x306c3 Family = 0x6 Model = 0x3c Stepping = 3

Features=0xbfebfbff<FPU,VME,DE,PSE,TSC,MSR,PAE,MCE,CX8,APIC,SEP,MTRR,PGE,MCA,CMOV,PAT,PSE36,CLFLUSH,DTS,ACPI,MMX,FXSR,SSE,SSE2,SS,HTT,TM,PBE>
Features2=0x4ddaebbf<SSE3,PCLMULQDQ,DTES64,MON,DS_CPL,VMX,EST,TM2,SSSE3,
<b11>,CX16,xTPR,PDCM,PCID,SSE4.1,SSE4.2,MOVBE,POPCNT,TSCDLT,XSAVE,OSXSAVE,RDRAND>
AMD Features=0x2c100800<SYSCALL,NX,Page1GB,RDTSCP,LM>
AMD Features2=0x21<LAHF,ABM>
Standard Extended Features=0x2603<GSFSBASE,TSCADJ,ENHMOVSB,INVPCID>
TSC: P-state invariant, performance statistics
real memory = 8589934592 (8192 MB)
avail memory = 8175161344 (7796 MB)
Event timer "LAPIC" quality 600
ACPI APIC Table: <AMI 06A0 >
FreeBSD/SMP: Multiprocessor System Detected: 2 CPUs
FreeBSD/SMP: 1 package(s) x 2 core(s)
cpu0 (BSP): APIC ID: 0
cpu1 (AP): APIC ID: 2
ACPI Warning: FADT (revision 5) is longer than ACPI 2.0 version, truncating length 268 to 244 (20110527/tbfadt-320)
ioapic0 <Version 2.0> irqs 0-23 on motherboard
kbd1 at kbdmux0
acpi0: <AMI 06A0> on motherboard
acpi0: Power Button (fixed)
acpi0: reservation of 0, a0000 (3) failed
cpu0: <ACPI CPU> on acpi0
cpu1: <ACPI CPU> on acpi0
hpet0: <High Precision Event Timer> iomem 0xfed00000-0xfed003ff on acpi0
Timecounter "HPET" frequency 14318180 Hz quality 950
Event timer "HPET" frequency 14318180 Hz quality 550
Event timer "HPET1" frequency 14318180 Hz quality 440
Event timer "HPET2" frequency 14318180 Hz quality 440
Event timer "HPET3" frequency 14318180 Hz quality 440
Event timer "HPET4" frequency 14318180 Hz quality 440
Event timer "HPET5" frequency 14318180 Hz quality 440
Event timer "HPET6" frequency 14318180 Hz quality 440
atrtc0: <AT realtime clock> port 0x70-0x77 irq 8 on acpi0
Event timer "RTC" frequency 32768 Hz quality 0
attimer0: <AT timer> port 0x40-0x43,0x50-0x53 irq 0 on acpi0
Timecounter "i8254" frequency 1193182 Hz quality 0
Event timer "i8254" frequency 1193182 Hz quality 100
Timecounter "ACPI-fast" frequency 3579545 Hz quality 900
acpi_timer0: <24-bit timer at 3.579545MHz> port 0x1808-0x180b on acpi0
pcib0: <ACPI Host-PCI bridge> port 0xcfc8-0xcfff on acpi0
pci0: <ACPI PCI bus> on pcib0
xhci0: <Intel Lynx Point USB 3.0 controller> mem 0xdfa00000-0xdfafffff irq 16 at device 20.0 on pci0
xhci0: 32 byte context size.
xhci0: Port routing mask set to 0xffffffff
usb0 on xhci0
pci0: <simple comms> at device 22.0 (no driver attached)
pci0: <simple comms> at device 22.1 (no driver attached)
ehci0: <EHCI (generic) USB 2.0 controller> mem 0xdfa12000-0xdfa123ff irq 16 at device 26.0 on pci0
usb1: EHCI version 1.0
usb1 on ehci0
pcib1: <ACPI PCI-PCI bridge> irq 16 at device 28.0 on pci0
pci33: <ACPI PCI bus> on pcib1
LSI MegaRAID SAS FreeBSD mrsas driver version: 06.704.01.00-fbsd
mrsas0: <LSI Thunderbolt SAS Controller> port 0xe000-0xe0ff mem 0xdf960000-0xdf963fff,0xdf900000-0xdf93ffff irq 16 at device 0.0 on pci33
mrsas0: Internal command timed out after 180 seconds.
pcib2: <ACPI PCI-PCI bridge> irq 16 at device 28.4 on pci0
pcib2: failed to allocate initial memory window: 0xde000000-0xdf8fffff
pci57: <ACPI PCI bus> on pcib2
vgapci0: <VGA-compatible display> mem 0xde000000-0xdeffffff,0xdf000000-0xdf7fffff irq 16 at device 0.0 on pci57
vgapci0: Boot video device
pcib3: <ACPI PCI-PCI bridge> irq 17 at device 28.5 on pci0
pci58: <ACPI PCI bus> on pcib3
bge0: <Broadcom NetXtreme Gigabit Ethernet Controller, ASIC rev. 0x5717100> mem
0xdfe50000-0xdfe5ffff,0xdfe40000-0xdfe4ffff,0xdfe30000-0xdfe3ffff irq 17 at device 0.0 on pci58
bge0: APE FW version: NCSI v1.2.33.0
bge0: CHIP ID 0x05717100; ASIC REV 0x5717; CHIP REV 0x57171; PCI-E
miibus0: <MII bus> on bge0
brgphy0: <BCM5717C 1000BASE-T media interface> PHY 1 on miibus0
```

```

brgphy0: 10baseT, 10baseT-FDX, 100baseTX, 100baseTX-FDX, 1000baseT, 1000baseT-master, 1000baseT-FDX, 1000baseT-FDX-master, auto, auto-flow
bge0: Ethernet address: 94:de:80:ff:25:96
bge1: <Broadcom NetXtreme Gigabit Ethernet Controller, ASIC rev. 0x5717100> mem
0xdfe20000-0xdfe2ffff,0xdfe10000-0xdfe1ffff,0xdfe00000-0xdfe0ffff irq 18 at device 0.1 on pci58
bge1: APE FW version: NCSI v1.2.33.0
bge1: CHIP ID 0x05717100; ASIC REV 0x5717; CHIP REV 0x57171; PCI-E
miibus1: <MII bus> on bge1
brgphy1: <BCM5717C 1000BASE-T media interface> PHY 2 on miibus1
brgphy1: 10baseT, 10baseT-FDX, 100baseTX, 100baseTX-FDX, 1000baseT, 1000baseT-master, 1000baseT-FDX, 1000baseT-FDX-master, auto, auto-flow
bge1: Ethernet address: 94:de:80:ff:25:97
ehci1: <EHCI (generic) USB 2.0 controller> mem 0xdfa11000-0xdfa113ff irq 23 at device 29.0 on pci0
usb2: EHCI version 1.0
usb2 on ehci1
isab0: <PCI-ISA bridge> at device 31.0 on pci0
isa0: <ISA bus> on isab0
atapci0: <Intel Lynx Point SATA300 controller> port 0xf0d0-0xf0d7,0xf0c0-0xf0c3,0xf0b0-0xf0b7,0xf0a0-0xf0a3,0xf090-0xf09f,0xf080-0xf08f
irq 19 at device 31.2 on pci0
ata2: <ATA channel> at channel 0 on atapci0
ata3: <ATA channel> at channel 1 on atapci0
atapci1: <Intel Lynx Point SATA300 controller> port 0xf070-0xf077,0xf060-0xf063,0xf050-0xf057,0xf040-0xf043,0xf030-0xf03f,0xf020-0xf02f
irq 19 at device 31.5 on pci0
ata4: <ATA channel> at channel 0 on atapci1
ata5: <ATA channel> at channel 1 on atapci1
acpi_button0: <Sleep Button> on acpi0
acpi_button1: <Power Button> on acpi0
uart0: <16550 or compatible> port 0x3f8-0x3ff irq 4 flags 0x10 on acpi0
uart1: <16550 or compatible> port 0x2f8-0x2ff irq 3 on acpi0
orm0: <ISA Option ROMs> at iomem 0xc0000-0xc7fff,0xcf800-0xd27ff on isa0
sc0: <System console> at flags 0x100 on isa0
sc0: VGA <16 virtual consoles, flags=0x300>
vga0: <Generic ISA VGA> at port 0x3c0-0x3df iomem 0xa0000-0xbffff on isa0
ppc0: cannot reserve I/O port range
est0: <Enhanced SpeedStep Frequency Control> on cpu0
p4tcc0: <CPU Frequency Thermal Control> on cpu0
est1: <Enhanced SpeedStep Frequency Control> on cpu1
p4tcc1: <CPU Frequency Thermal Control> on cpu1
Timecounters tick every 1.000 msec
usb0: 5.0Gbps Super Speed USB v3.0
usb1: 480Mbps High Speed USB v2.0
usb2: 480Mbps High Speed USB v2.0
ugen0.1: <0x8086> at usb0
uhub0: <0x8086 XHCI root HUB, class 9/0, rev 3.00/1.00, addr 1> on usb0
ugen1.1: <Intel> at usb1
uhub1: <Intel EHCI root HUB, class 9/0, rev 2.00/1.00, addr 1> on usb1
ugen2.1: <Intel> at usb2
uhub2: <Intel EHCI root HUB, class 9/0, rev 2.00/1.00, addr 1> on usb2
uhub1: 2 ports with 2 removable, self powered
uhub2: 2 ports with 2 removable, self powered
uhub0: 21 ports with 21 removable, self powered
xhci0: Port routing mask set to 0x00000000
usb_alloc_device: device init 2 failed (USB_ERR_IOERROR, ignored)
ugen0.2: <Unknown> at usb0 (disconnected)
uhub_reattach_port: could not allocate new device
ugen1.2: <vendor 0x8087> at usb1
uhub3: <vendor 0x8087 product 0x8008, class 9/0, rev 2.00/0.04, addr 2> on usb1
ugen2.2: <vendor 0x8087> at usb2
uhub4: <vendor 0x8087 product 0x8000, class 9/0, rev 2.00/0.04, addr 2> on usb2
da0 at mrsas0 bus 0 scbus0 target 0 lun 0
da0: <LSI MR9272-8i 3.23> Fixed Direct Access SCSI-5 device
da0: Serial Number 009a7854120176971b60ad0809b00506
da0: 150.000MB/s transfers
da0: 139200MB (285081600 512 byte sectors: 255H 63S/T 17745C)
cd0 at ata4 bus 0 scbus4 target 0 lun 0
cd0: <MATSHITA DVD-ROM UJ8E0 1.00> Removable CD-ROM SCSI-0 device
SMP: AP CPU #1 Launched!
cd0: Serial Number SP00I2R02764
cd0: 150.000MB/s transfers (SATA 1.x, UDMA5, ATAPI 12bytes, PIO 8192bytes)
cd0: Attempt to query device size failed: NOT READY, Medium not present - tray closed
Timecounter "TSC-low" frequency 1546449374 Hz quality 1000
Root mount waiting for: usb2 usb1
uhub3: 6 ports with 6 removable, self powered
uhub4: 6 ports with 6 removable, self powered
ugen1.3: <vendor 0x0409> at usb1
uhub5: <vendor 0x0409 product 0x005a, class 9/0, rev 2.00/1.00, addr 3> on usb1
Root mount waiting for: usb1
uhub5: 3 ports with 2 removable, bus powered
ugen1.4: <Topre Corporation> at usb1
ukbd0: <Topre Corporation HHKB Professional, class 0/0, rev 1.10/1.02, addr 4> on usb1
kbd0 at ukbd0
Root mount waiting for: usb1
ugen1.5: <American Megatrends Inc.> at usb1
ukbd1: <Keyboard Interface> on usb1
kbd1 at ukbd1
ums0: <Mouse Interface> on usb1
ums0: 3 buttons and [Z] coordinates ID=0
Trying to mount root from ufs:/dev/da0p2 [rw]...

```

カーネルデバイスツリー

```
nexus0
  apic0
    I/O memory addresses:
      0xfec00000-0xfec0001f
  ram0
    I/O memory addresses:
      0x0-0x97fff
      0x100000-0xb9848fff
      0xb9850000-0xcc7a0fff
      0xcf7f000-0xcf7ffff
      0x10000000-0x22ffffff
  acpi0
    Interrupt request lines:
      9
    I/O ports:
      0x10-0x1f
      0x22-0x3f
      0x44-0x5f
      0x62-0x63
      0x65-0x6f
      0x72-0x7f
      0x80
      0x84-0x86
      0x88
      0x8c-0x8e
      0x90-0x9f
      0xa2-0xbf
      0xe0-0xef
      0x4d0-0x4d1
      0x800-0x87f
      0xca4-0xca5
      0x1854-0x1857
    I/O memory addresses:
      0xdf800000-0xdf87ffff
      0xdf894000-0xdf894fff
      0xdf8fe000-0xdf8fefff
      0xe0000000-0xe0000fff
      0xfed10000-0xfed17fff
      0xfed18000-0xfed18fff
      0xfed19000-0xfed19fff
      0xfed1c000-0xfed1ffff
      0xfed20000-0xfed3ffff
      0xfed40000-0xfed44fff
      0xfed45000-0xfed8ffff
      0xfed90000-0xfed93fff
      0xfef00000-0xfef0ffff
      0xff000000-0xffffffff
  cpu0
    I/O ports:
      0x1815
    acpi_perf0
    est0
    p4tcc0
    cpufreq0
  cpu1
    acpi_perf1
    est1
    p4tcc1
    cpufreq1
  pcib0
    I/O ports:
      0xcf8-0xcff
  pci0
    hostb0
    xhci0
      Interrupt request lines:
        264
      I/O memory addresses:
        0xdfa00000-0xdfa0ffff
    usb0
      uhub0
  ehci0
    Interrupt request lines:
      16
    I/O memory addresses:
      0xdfa12000-0xdfa123ff
    usb1
      uhub1
      uhub3
      uhub5
      ukbd0
      ukbd1
      ums0
  pcib1
    I/O ports:
```

```

    0xe000-0xefff
I/O memory addresses:
0xdf900000-0xdf9fffff
pci33
  mrsas0
    Interrupt request lines:
      16
    pci1 I/O port window:
      0xe000-0xe0ff
    pci1 memory window:
      0xdf900000-0xdf93ffff
      0xdf960000-0xdf963fff
pci32
  I/O memory addresses:
    0xde000000-0xdf7fffff
pci57
  vgapci0
    pci2 memory window:
      0xde000000-0xdeffffff
      0xdf000000-0xdf7fffff
pci3
  I/O memory addresses:
    0xdfe00000-0xdfefffff
pci58
  bge0
    Interrupt request lines:
      265
    pci3 prefetch window:
      0xdfe30000-0xdfe3ffff
      0xdfe40000-0xdfe4ffff
      0xdfe50000-0xdfe5ffff
  miibus0
    brgphy0
  bge1
    Interrupt request lines:
      266
    pci3 prefetch window:
      0xdfe00000-0xdfe0ffff
      0xdfe10000-0xdfe1ffff
      0xdfe20000-0xdfe2ffff
  miibus1
    brgphy1
ehci1
  Interrupt request lines:
    23
  I/O memory addresses:
    0xdfa11000-0xdfa113ff
usb2
  uhub2
  uhub4
isab0
isa0
sc0
vga0
  I/O ports:
    0x3c0-0x3df
  I/O memory addresses:
    0xa0000-0xbffff
orm0
  I/O memory addresses:
    0xc0000-0xc7fff
    0xcf800-0xd27ff
atapci0
  Interrupt request lines:
    19
  I/O ports:
    0xf080-0xf08f
    0xf090-0xf09f
    0xf0a0-0xf0a3
    0xf0b0-0xf0b7
    0xf0c0-0xf0c3
    0xf0d0-0xf0d7
  ata2
  ata3
atapci1
  Interrupt request lines:
    19
  I/O ports:
    0xf020-0xf02f
    0xf030-0xf03f
    0xf040-0xf043
    0xf050-0xf057
    0xf060-0xf063
    0xf070-0xf077
  ata4
  ata5
acpi_sysresource0
atdma0
  DMA request lines:
    4
  I/O ports:

```



```
0xc0-0xdf
hpet0
  Interrupt request lines:
    256
    257
    258
    259
    260
    261
    262
    263
  I/O memory addresses:
    0xfed00000-0xfed003ff
fpupnp0
  I/O ports:
    0xf0
acpi_sysresource1
acpi_sysresource2
atrtc0
  Interrupt request lines:
    8
  I/O ports:
    0x70-0x71
attimer0
  Interrupt request lines:
    0
  I/O ports:
    0x40-0x43
acpi_sysresource3
acpi_sysresource4
uart0
  Interrupt request lines:
    4
  I/O ports:
    0x3f8-0x3ff
uart1
  Interrupt request lines:
    3
  I/O ports:
    0x2f8-0x2ff
acpi_sysresource5
acpi_sysresource6
acpi_sysresource7
acpi_sysresource8
pci_link0
pci_link1
pci_link2
pci_link3
pci_link4
pci_link5
pci_link6
pci_link7
acpi_button0
acpi_button1
acpi_timer0
  I/O ports:
    0x1808-0x180b
```

PCIバスデータ詳細一覧

```
hostb0@pci0:0:0:0:    class=0x060000 card=0x80381bcf chip=0x0c008086 rev=0x06 hdr=0x00
    vendor    = 'Intel Corporation'
    class     = bridge
    subclass  = HOST-PCI
    cap 09[e0] = vendor (length 12) Intel cap 0 version 1
xhci0@pci0:0:20:0:   class=0x0c0330 card=0x80381bcf chip=0x8c318086 rev=0x04 hdr=0x00
    vendor    = 'Intel Corporation'
    class     = serial bus
    subclass  = USB
    cap 01[70] = powerspec 2 supports D0 D3 current D0
    cap 05[80] = MSI supports 8 messages, 64 bit enabled with 1 message
none0@pci0:0:22:0:   class=0x078000 card=0x80381bcf chip=0x8c3a8086 rev=0x04 hdr=0x00
    vendor    = 'Intel Corporation'
    class     = simple comms
    cap 01[50] = powerspec 3 supports D0 D3 current D0
    cap 05[8c] = MSI supports 1 message, 64 bit
none1@pci0:0:22:1:   class=0x078000 card=0x80381bcf chip=0x8c3b8086 rev=0x04 hdr=0x00
    vendor    = 'Intel Corporation'
    class     = simple comms
    cap 01[50] = powerspec 3 supports D0 D3 current D0
    cap 05[8c] = MSI supports 1 message, 64 bit
ehci0@pci0:0:26:0:   class=0x0c0320 card=0x80381bcf chip=0x8c2d8086 rev=0x04 hdr=0x00
    vendor    = 'Intel Corporation'
    class     = serial bus
    subclass  = USB
    cap 01[50] = powerspec 2 supports D0 D3 current D0
    cap 0a[58] = EHCI Debug Port at offset 0xa0 in map 0x14
    cap 13[98] = PCI Advanced Features: FLR TP
pcib1@pci0:0:28:0:   class=0x060400 card=0x80381bcf chip=0x8c108086 rev=0xd4 hdr=0x01
    vendor    = 'Intel Corporation'
    class     = bridge
    subclass  = PCI-PCI
    cap 10[40] = PCI-Express 2 root port slot max data 128(128) link x4(x4)
                 speed 5.0(5.0) ASPM disabled(L0s/L1)
    cap 05[80] = MSI supports 1 message
    cap 0d[90] = PCI Bridge card=0x80381bcf
    cap 01[a0] = powerspec 3 supports D0 D3 current D0
pcib2@pci0:0:28:4:   class=0x060400 card=0x80381bcf chip=0x8c188086 rev=0xd4 hdr=0x01
    vendor    = 'Intel Corporation'
    class     = bridge
    subclass  = PCI-PCI
    cap 10[40] = PCI-Express 2 root port slot max data 128(128) link x1(x1)
                 speed 2.5(5.0) ASPM disabled(L0s/L1)
    cap 05[80] = MSI supports 1 message
    cap 0d[90] = PCI Bridge card=0x80381bcf
    cap 01[a0] = powerspec 3 supports D0 D3 current D0
pcib3@pci0:0:28:5:   class=0x060400 card=0x80381bcf chip=0x8c1a8086 rev=0xd4 hdr=0x01
    vendor    = 'Intel Corporation'
    class     = bridge
    subclass  = PCI-PCI
    cap 10[40] = PCI-Express 2 root port slot max data 128(128) link x1(x1)
                 speed 5.0(5.0) ASPM disabled(L0s/L1)
    cap 05[80] = MSI supports 1 message
    cap 0d[90] = PCI Bridge card=0x80381bcf
    cap 01[a0] = powerspec 3 supports D0 D3 current D0
ehci1@pci0:0:29:0:   class=0x0c0320 card=0x80381bcf chip=0x8c268086 rev=0x04 hdr=0x00
    vendor    = 'Intel Corporation'
    class     = serial bus
    subclass  = USB
    cap 01[50] = powerspec 2 supports D0 D3 current D0
    cap 0a[58] = EHCI Debug Port at offset 0xa0 in map 0x14
    cap 13[98] = PCI Advanced Features: FLR TP
isab0@pci0:0:31:0:   class=0x060100 card=0x80381bcf chip=0x8c548086 rev=0x04 hdr=0x00
    vendor    = 'Intel Corporation'
    class     = bridge
    subclass  = PCI-ISA
    cap 09[e0] = vendor (length 12) Intel cap 1 version 0
                 features: AMT, 4 PCI-e x1 slots
atapci0@pci0:0:31:2:  class=0x01018f card=0x80381bcf chip=0x8c008086 rev=0x04 hdr=0x00
    vendor    = 'Intel Corporation'
    class     = mass storage
    subclass  = ATA
    cap 01[70] = powerspec 3 supports D0 D3 current D0
none2@pci0:0:31:3:   class=0x0c0500 card=0x80381bcf chip=0x8c228086 rev=0x04 hdr=0x00
    vendor    = 'Intel Corporation'
    class     = serial bus
    subclass  = SMBus
atapci1@pci0:0:31:5:  class=0x010185 card=0x80381bcf chip=0x8c088086 rev=0x04 hdr=0x00
    vendor    = 'Intel Corporation'
    class     = mass storage
    subclass  = ATA
    cap 01[70] = powerspec 3 supports D0 D3 current D0
mrsas0@pci0:33:0:0:   class=0x010400 card=0x92721000 chip=0x005b1000 rev=0x05 hdr=0x00
    vendor    = 'LSI Logic / Symbios Logic'
    device    = 'MegaRAID SAS 2208 [Thunderbolt]'
```

```

class      = mass storage
subclass   = RAID
cap 01[50] = powerspec 3  supports D0 D1 D2 D3  current D0
cap 10[68] = PCI-Express 2 endpoint max data 128(4096) FLR link x4(x8)
            speed 5.0(8.0) ASPM disabled(L0s)
cap 03[d0] = VPD
cap 05[a8] = MSI supports 1 message, 64 bit
cap 11[c0] = MSI-X supports 16 messages in map 0x14
ecap 0001[100] = AER 2 0 fatal 0 non-fatal 1 corrected
ecap 0019[1e0] = PCIe Sec 1 lane errors 0
ecap 0004[1c0] = Power Budgeting 1
ecap 0016[190] = DPA 1
ecap 000e[148] = ARI 1
vgapci0@pci:57:0:0:      class=0x030000 card=0x80381bcf chip=0x0522102b rev=0x02 hdr=0x00
vendor      = 'Matrox Graphics, Inc.'
device      = 'MGA G200e [Pilot] ServerEngines (SEP1)'
class       = display
subclass    = VGA
cap 01[dc] = powerspec 2  supports D0 D3  current D0
cap 10[e4] = PCI-Express 1 legacy endpoint max data 128(256) link x1(x1)
            speed 2.5(2.5) ASPM disabled(L0s)
cap 05[54] = MSI supports 1 message
bge0@pci:58:0:0:      class=0x020000 card=0x80381bcf chip=0x165614e4 rev=0x10 hdr=0x00
vendor      = 'Broadcom Corporation'
device      = 'NetXtreme BCM5718 Gigabit Ethernet PCIe'
class       = network
subclass    = ethernet
cap 01[48] = powerspec 3  supports D0 D3  current D0
cap 03[50] = VPD
cap 05[58] = MSI supports 8 messages, 64 bit enabled with 1 message
cap 11[a0] = MSI-X supports 17 messages in map 0x20
cap 10[ac] = PCI-Express 2 endpoint max data 128(256) FLR link x1(x1)
            speed 5.0(5.0) ASPM disabled(L1)
ecap 0001[100] = AER 1 0 fatal 0 non-fatal 1 corrected
ecap 0003[13c] = Serial 1 000094de80ff2596
ecap 0004[150] = Power Budgeting 1
ecap 0002[160] = VC 1 max VC0
bge1@pci:58:0:1:      class=0x020000 card=0x80381bcf chip=0x165614e4 rev=0x10 hdr=0x00
vendor      = 'Broadcom Corporation'
device      = 'NetXtreme BCM5718 Gigabit Ethernet PCIe'
class       = network
subclass    = ethernet
cap 01[48] = powerspec 3  supports D0 D3  current D0
cap 03[50] = VPD
cap 05[58] = MSI supports 8 messages, 64 bit enabled with 1 message
cap 11[a0] = MSI-X supports 17 messages in map 0x20
cap 10[ac] = PCI-Express 2 endpoint max data 128(256) FLR link x1(x1)
            speed 5.0(5.0) ASPM disabled(L1)
ecap 0001[100] = AER 1 0 fatal 0 non-fatal 1 corrected
ecap 0003[13c] = Serial 1 000094de80ff2597
ecap 0004[150] = Power Budgeting 1
ecap 0002[160] = VC 1 max VC0

```

ACPI電源管理データ詳細一覧

```
RSD PTR: OEM=AMI, ACPI_Rev=2.0x (2)
XSDT=0xcc7f3090, length=36, cksum=209
XSDT: Length=156, Revision=1, Checksum=23,
OEMID=AMI, OEM Table ID=06A0, OEM Revision=0x1072009,
Creator ID=AMI, Creator Revision=0x10013
Entries={ 0xcc8017e8, 0xcc8018f8, 0xcc801960, 0xcc8019a8, 0xcc801f30, 0xcc802ab0, 0xcc802d90, 0xcc8030d8, 0xcc803118, 0xcc8031d8,
0xcc803210, 0xcc8036a8, 0xcc809208, 0xcc809408, 0xcc809458 }
FACP: Length=268, Revision=5, Checksum=215,
OEMID=AMI, OEM Table ID=06A0, OEM Revision=0x1072009,
Creator ID=AMI, Creator Revision=0x10013
FACS=0xccfa7080, DSDT=0xcc7f31b8
INT_MODEL=APIC
Preferred_PM_Profile=Desktop (1)
SCI_INT=9
SMI_CMD=0xb2, ACPI_ENABLE=0xa0, ACPI_DISABLE=0xa1, S4BIOS_REQ=0x0
PSTATE_CNT=0x0
PM1a_EVT_BLK=0x1800-0x1803
PM1a_CNT_BLK=0x1804-0x1805
PM2_CNT_BLK=0x1850-0x1850
PM_TMR_BLK=0x1808-0x180b
GPE0_BLK=0x1820-0x182f
P_LVL2_LAT=101 us, P_LVL3_LAT=1001 us
FLUSH_SIZE=1024, FLUSH_STRIDE=16
DUTY_OFFSET=0, DUTY_WIDTH=0
DAY_ALRM=13, MON_ALRM=0, CENTURY=50
IAPC_BOOT_ARCH={NO_ASPM}
Flags={WBINVD,C1_SUPPORTED,C2_MP_SUPPORTED,SLEEP_BUTTON,S4_RTC_WAKE,RESET_REGISTER,PLATFORM_CLOCK,S4_RTC_VALID,REMOTE_POWER_ON}
RESET_REG=0x539:0[8] (IO), RESET_VALUE=0xf7
FACS: Length=64, HwSig=0x00000025, FirmWake_Vec=0x00000000
Global_Lock=
Flags=
Version=2
DSDT: Length=58925, Revision=2, Checksum=227,
OEMID=AMI, OEM Table ID=06A0, OEM Revision=0x0,
Creator ID=INTL, Creator Revision=0x20091112
APIC: Length=98, Revision=3, Checksum=163,
OEMID=AMI, OEM Table ID=06A0, OEM Revision=0x1072009,
Creator ID=AMI, Creator Revision=0x10013
Local APIC ADDR=0xfe000000
Flags={PC-AT}
Type=Local APIC
ACPI CPU=1
Flags={ENABLED}
APIC ID=0
Type=Local APIC
ACPI CPU=2
Flags={ENABLED}
APIC ID=2
Type=IO APIC
APIC ID=8
INT BASE=0
ADDR=0x0000000fec000000
Type=INT Override
BUS=0
IRQ=0
INTR=2
Flags={Polarity=conforming, Trigger=conforming}
Type=INT Override
BUS=0
IRQ=9
INTR=9
Flags={Polarity=active-hi, Trigger=level}
Type=Local APIC NMI
ACPI CPU=ALL
LINT Pin=1
Flags={Polarity=active-hi, Trigger=edge}
FPDT: Length=68, Revision=1, Checksum=28,
OEMID=AMI, OEM Table ID=06A0, OEM Revision=0x1072009,
Creator ID=AMI, Creator Revision=0x10013
SSDT: Length=1411, Revision=1, Checksum=30,
OEMID=PmRef, OEM Table ID=Cpu0Ist, OEM Revision=0x3000,
Creator ID=INTL, Creator Revision=0x20051117
SSDT: Length=2937, Revision=1, Checksum=202,
OEMID=CpuRef, OEM Table ID=CpuSsdT, OEM Revision=0x3000,
Creator ID=INTL, Creator Revision=0x20051117
SSDT: Length=734, Revision=1, Checksum=191,
OEMID=PmRef, OEM Table ID=Cpu0Tst, OEM Revision=0x3000,
Creator ID=INTL, Creator Revision=0x20051117
SSDT: Length=840, Revision=1, Checksum=74,
OEMID=PmRef, OEM Table ID=ApTst, OEM Revision=0x3000,
Creator ID=INTL, Creator Revision=0x20051117
MCFG: Length=60, Revision=1, Checksum=55,
OEMID=AMI, OEM Table ID=06A0, OEM Revision=0x1072009,
Creator ID=MSFT, Creator Revision=0x97
Base Address=0x0000000e00000000
```

Segment Group=0x0000
Start Bus=0
End Bus=255
PRAD: Length=190, Revision=2, Checksum=119,
OEMID=PRADID, OEM Table ID=PRADID, OEM Revision=0x1,
Creator ID=MSFT, Creator Revision=0x3000001
HPET: Length=56, Revision=1, Checksum=236,
OEMID=AMI, OEM Table ID=06A0, OEM Revision=0x1072009,
Creator ID=AMI., Creator Revision=0x5
HPET Number=0
ADDR=0xfed00000:0[64] (Memory) HW Rev=0x1
Comparators=7
Counter Size=1
Legacy IRQ routing capable={TRUE}
PCI Vendor ID=0x8086
Minimal Tick=14318
SSDT: Length=1173, Revision=1, Checksum=1,
OEMID=IdeRef, OEM Table ID=IdeTable, OEM Revision=0x1000,
Creator ID=INTL, Creator Revision=0x20120711
SSDT: Length=23390, Revision=1, Checksum=21,
OEMID=SaSsdT, OEM Table ID=SaSsdT, OEM Revision=0x3000,
Creator ID=INTL, Creator Revision=0x20120711
SSDT: Length=505, Revision=1, Checksum=51,
OEMID=SgRef, OEM Table ID=SgPeg, OEM Revision=0x1000,
Creator ID=INTL, Creator Revision=0x20120711
SPCR: Length=80, Revision=1, Checksum=99,
OEMID=A M I, OEM Table ID=APTI04, OEM Revision=0x1072009,
Creator ID=AMI., Creator Revision=0x5
BERT: Length=48, Revision=1, Checksum=156,
OEMID=AMI, OEM Table ID=AMI BERT, OEM Revision=0x0,
Creator ID=AMI, Creator Revision=0x10013

ネットワークインターフェースデータ詳細一覧

```
bge0: flags=8843<UP,BROADCAST,RUNNING,SIMPLEX,MULTICAST> metric 0 mtu 1500
options=c019b<RXCSUM, TXCSUM, VLAN_MTU, VLAN_HWTAGGING, VLAN_HWCSUM, TSO4, VLAN_HWTSO, LINKSTATE>
ether 94:de:80:ff:25:96
inet 192.168.10.127 netmask 0xfffff00 broadcast 192.168.10.255
nd6 options=29<PERFORMNUD,IFDISABLED,AUTO_LINKLOCAL>
media: Ethernet autoselect (1000baseT <full-duplex>)
status: active
bge1: flags=8802<BROADCAST,SIMPLEX,MULTICAST> metric 0 mtu 1500
options=c019b<RXCSUM, TXCSUM, VLAN_MTU, VLAN_HWTAGGING, VLAN_HWCSUM, TSO4, VLAN_HWTSO, LINKSTATE>
ether 94:de:80:ff:25:97
nd6 options=29<PERFORMNUD,IFDISABLED,AUTO_LINKLOCAL>
media: Ethernet autoselect
lo0: flags=8049<UP,LOOPBACK,RUNNING,MULTICAST> metric 0 mtu 16384
options=600003<RXCSUM, TXCSUM, RXCSUM_IPV6, TXCSUM_IPV6>
inet6 ::1 prefixlen 128
inet6 fe80::1%lo0 prefixlen 64 scopeid 0x6
inet 127.0.0.1 netmask 0xff000000
nd6 options=21<PERFORMNUD,AUTO_LINKLOCAL>
```

デバイス認識詳細一覧

2	1 dr-xr-xr-x	9 root	wheel	512 Nov 25 02:31 /dev
79	0 lrwxr-xr-x	1 root	wheel	12 Nov 24 17:32 /dev/log -> /var/run/log
115	0 lrwxr-xr-x	1 root	wheel	10 Nov 25 02:31 /dev/dumpdev -> /dev/da0p3
3	0 crw-r-----	1 root	operator	0, 3 Nov 24 17:31 /dev/geom.ctl
4	0 cr--r--r--	1 root	wheel	0, 4 Nov 24 17:31 /dev/sndstat
5	0 crw-----	1 root	wheel	0, 5 Nov 24 17:31 /dev/devctl
6	0 crw-----	1 root	wheel	0, 6 Nov 24 17:32 /dev/console
7	0 crw-----	1 root	wheel	0, 7 Nov 24 17:31 /dev/klog
8	0 crw-rw-rw-	1 root	wheel	0, 8 Nov 24 17:31 /dev/tty
9	0 crw-----	1 root	wheel	0, 9 Nov 24 17:31 /dev/kbdmux0
10	0 lrwxr-xr-x	1 root	wheel	7 Nov 24 17:31 /dev/kbd1 -> kbdmux0
11	0 crw-----	1 root	wheel	0, 11 Nov 26 10:19 /dev/bpf
12	0 lrwxr-xr-x	1 root	wheel	3 Nov 24 17:31 /dev/bpf0 -> bpf
13	0 crw-r-----	1 root	kmem	0, 13 Nov 24 17:31 /dev/mem
14	0 crw-r-----	1 root	kmem	0, 14 Nov 24 17:31 /dev/kmem
15	0 crw-----	1 root	wheel	0, 15 Nov 24 17:31 /dev/fido
16	0 crw-----	1 root	kmem	0, 16 Nov 24 17:31 /dev/nfslock
17	0 crw-rw-rw-	1 root	wheel	0, 17 Nov 26 10:19 /dev/null
18	0 crw-rw-rw-	1 root	wheel	0, 18 Nov 24 17:31 /dev/zero
19	0 crw-----	1 root	kmem	0, 19 Nov 24 17:31 /dev/audit
20	0 crw-r--r--	1 root	wheel	0, 20 Nov 24 17:31 /dev/pci
21	0 crw-rw-rw-	1 root	wheel	0, 21 Nov 24 17:31 /dev/ptmx
22	0 crw-rw-rw-	1 root	wheel	0, 22 Nov 25 02:31 /dev/random
23	0 lrwxr-xr-x	1 root	wheel	6 Nov 24 17:31 /dev/urandom -> random
113	1 dr-xr-xr-x	2 root	wheel	512 Nov 24 17:31 /dev/fd
24	0 crw-rw-rw-	1 root	wheel	0, 24 Nov 24 17:31 /dev/fd/0
26	0 crw-rw-rw-	1 root	wheel	0, 26 Nov 24 17:31 /dev/fd/1
28	0 crw-rw-rw-	1 root	wheel	0, 28 Nov 24 17:31 /dev/fd/2
25	0 lrwxr-xr-x	1 root	wheel	4 Nov 24 17:31 /dev/stdin -> fd/0
27	0 lrwxr-xr-x	1 root	wheel	4 Nov 24 17:31 /dev/stdout -> fd/1
29	0 lrwxr-xr-x	1 root	wheel	4 Nov 24 17:31 /dev/stderr -> fd/2
30	0 crw-----	1 root	wheel	0, 30 Nov 24 17:31 /dev/io
31	0 crw-rw-rw-	1 root	wheel	0, 31 Nov 24 17:31 /dev/midstat
32	0 crw-----	1 root	wheel	0, 32 Nov 24 17:31 /dev/sysmouse
33	0 crw-r--r--	1 root	wheel	0, 33 Nov 24 17:31 /dev/acpi
34	0 crw-rw----	1 root	operator	0, 34 Nov 24 17:31 /dev/mrsas0
35	0 crw-----	1 root	wheel	0, 35 Nov 24 17:31 /dev/ttyu0
36	0 crw-----	1 root	wheel	0, 36 Nov 24 17:31 /dev/ttyu0.init
37	0 crw-----	1 root	wheel	0, 37 Nov 24 17:31 /dev/ttyu0.lock
38	0 crw-rw----	1 uucp	dialer	0, 38 Nov 24 17:31 /dev/cuau0
39	0 crw-rw----	1 uucp	dialer	0, 39 Nov 24 17:31 /dev/cuau0.init
40	0 crw-rw----	1 uucp	dialer	0, 40 Nov 24 17:31 /dev/cuau0.lock
41	0 crw-----	1 root	wheel	0, 41 Nov 24 17:31 /dev/ttyu1
42	0 crw-----	1 root	wheel	0, 42 Nov 24 17:31 /dev/ttyu1.init
43	0 crw-----	1 root	wheel	0, 43 Nov 24 17:31 /dev/ttyu1.lock
44	0 crw-rw----	1 uucp	dialer	0, 44 Nov 24 17:31 /dev/cuau1
45	0 crw-rw----	1 uucp	dialer	0, 45 Nov 24 17:31 /dev/cuau1.init
46	0 crw-rw----	1 uucp	dialer	0, 46 Nov 24 17:31 /dev/cuau1.lock
47	0 crw-----	1 root	tty	0, 47 Nov 26 10:19 /dev/ttyv0
48	0 crw-----	1 root	tty	0, 48 Nov 24 17:33 /dev/ttyv1
49	0 crw-----	1 root	wheel	0, 49 Nov 24 17:32 /dev/ttyv2
50	0 crw-----	1 root	wheel	0, 50 Nov 24 17:32 /dev/ttyv3
51	0 crw-----	1 root	wheel	0, 51 Nov 24 17:32 /dev/ttyv4
52	0 crw-----	1 root	wheel	0, 52 Nov 24 17:32 /dev/ttyv5
53	0 crw-----	1 root	wheel	0, 53 Nov 24 17:32 /dev/ttyv6
54	0 crw-----	1 root	wheel	0, 54 Nov 24 17:32 /dev/ttyv7
55	0 crw-----	1 root	wheel	0, 55 Nov 24 17:31 /dev/ttyv8
56	0 crw-----	1 root	wheel	0, 56 Nov 24 17:31 /dev/ttyv9
57	0 crw-----	1 root	wheel	0, 57 Nov 24 17:31 /dev/ttyva
58	0 crw-----	1 root	wheel	0, 58 Nov 24 17:31 /dev/ttyvb
59	0 crw-----	1 root	wheel	0, 59 Nov 24 17:31 /dev/ttyvc
60	0 crw-----	1 root	wheel	0, 60 Nov 24 17:31 /dev/ttyvd
61	0 crw-----	1 root	wheel	0, 61 Nov 24 17:31 /dev/ttyve
62	0 crw-----	1 root	wheel	0, 62 Nov 24 17:31 /dev/ttyvf
63	0 crw-----	1 root	wheel	0, 63 Nov 24 17:31 /dev/conslectl
64	0 crw-----	1 root	wheel	0, 64 Nov 24 17:31 /dev/ufssuspend
66	0 crw-r--r--	1 root	operator	0, 66 Nov 24 17:31 /dev/usbctl
67	0 crw-----	1 root	operator	0, 67 Nov 24 17:31 /dev/xpt0
68	0 crw-----	1 root	wheel	0, 68 Nov 24 17:31 /dev/mdctl
114	1 dr-xr-xr-x	2 root	wheel	512 Nov 24 17:31 /dev/usb
69	0 crw-----	1 root	operator	0, 69 Nov 24 17:31 /dev/usb/0.1.0
71	0 crw-----	1 root	operator	0, 71 Nov 24 17:31 /dev/usb/1.1.0
73	0 crw-----	1 root	operator	0, 73 Nov 24 17:31 /dev/usb/2.1.0
75	0 crw-----	1 root	operator	0, 75 Nov 24 17:31 /dev/usb/0.1.1
76	0 crw-----	1 root	operator	0, 76 Nov 24 17:31 /dev/usb/1.1.1
77	0 crw-----	1 root	operator	0, 77 Nov 24 17:31 /dev/usb/2.1.1
80	0 crw-----	1 root	operator	0, 80 Nov 24 17:31 /dev/usb/1.2.0
82	0 crw-----	1 root	operator	0, 82 Nov 24 17:31 /dev/usb/2.2.0
84	0 crw-----	1 root	operator	0, 84 Nov 24 17:31 /dev/usb/1.2.1
85	0 crw-----	1 root	operator	0, 85 Nov 24 17:31 /dev/usb/2.2.1
98	0 crw-----	1 root	operator	0, 98 Nov 24 17:31 /dev/usb/1.3.0
100	0 crw-----	1 root	operator	0, 100 Nov 24 17:31 /dev/usb/1.3.1
101	0 crw-----	1 root	operator	0, 101 Nov 24 17:31 /dev/usb/1.4.0
103	0 crw-----	1 root	operator	0, 103 Nov 24 17:31 /dev/usb/1.4.1
106	0 crw-----	1 root	operator	0, 106 Nov 24 17:31 /dev/usb/1.5.0

108	0 crw-----	1 root	operator	0, 108	Nov 24 17:31	/dev/usb/l.5.1
109	0 crw-----	1 root	operator	0, 109	Nov 24 17:31	/dev/usb/l.5.2
70	0 lrwxr-xr-x	1 root	wheel	9	Nov 24 17:31	/dev/ugen0.1 -> usb/0.1.0
72	0 lrwxr-xr-x	1 root	wheel	9	Nov 24 17:31	/dev/ugen1.1 -> usb/1.1.0
74	0 lrwxr-xr-x	1 root	wheel	9	Nov 24 17:31	/dev/ugen2.1 -> usb/2.1.0
81	0 lrwxr-xr-x	1 root	wheel	9	Nov 24 17:31	/dev/ugen1.2 -> usb/1.2.0
83	0 lrwxr-xr-x	1 root	wheel	9	Nov 24 17:31	/dev/ugen2.2 -> usb/2.2.0
86	0 cr-----	1 root	wheel	0,	86	Nov 24 17:31 /dev/devstat
87	0 crw-----	1 root	operator	0,	87	Nov 24 17:31 /dev/pass0
88	0 crw-----	1 root	operator	0,	88	Nov 24 17:31 /dev/pass1
89	0 crw-r-----	1 root	operator	0,	89	Nov 24 17:31 /dev/da0
90	0 crw-r-----	1 root	operator	0,	90	Nov 24 17:31 /dev/da0p1
91	0 crw-r-----	1 root	operator	0,	91	Nov 25 02:31 /dev/da0p2
92	0 crw-r-----	1 root	operator	0,	92	Nov 25 02:31 /dev/da0p3
93	0 crw-r-----	1 root	operator	0,	93	Nov 24 17:31 /dev/cd0
78	1 dr-xr-xr-x	2 root	wheel	512	Nov 24 17:31	/dev/gptid
94	0 crw-r-----	1 root	operator	0,	94	Nov 24 17:31 /dev/gptid/89192440-92d0-11e5-bb7f-94de80ff2596
99	0 lrwxr-xr-x	1 root	wheel	9	Nov 24 17:31	/dev/ugen1.3 -> usb/1.3.0
102	0 lrwxr-xr-x	1 root	wheel	9	Nov 24 17:31	/dev/ugen1.4 -> usb/1.4.0
104	0 crw-----	1 root	wheel	0,	104	Nov 24 17:31 /dev/ukbd0
105	0 lrwxr-xr-x	1 root	wheel	5	Nov 24 17:31	/dev/kbd0 -> ukbd0
107	0 lrwxr-xr-x	1 root	wheel	9	Nov 24 17:31	/dev/ugen1.5 -> usb/1.5.0
110	0 crw-----	1 root	wheel	0,	110	Nov 24 17:31 /dev/ukbd1
111	0 lrwxr-xr-x	1 root	wheel	5	Nov 24 17:31	/dev/kbd2 -> ukbd1
112	0 crw-r--r--	1 root	operator	0,	112	Nov 24 17:31 /dev/ums0

更新履歷

更新履歴

- 2015年11月26日 FreeBSD動作検証レポート2015年11月24日版作成

FreeBSD動作検証レポート

R110g-1E / 9.3-RELEASE

対象ハードウェア

maker:NEC, product:Express5800/R110g-1E
[N8100-2174Y], serial:4800112, version:FR1.0

対象OSバージョン

FreeBSD 9.3-RELEASE #0: Tue Nov 24 17:20:35
JST 2015

2015年11月24日版

BSDコンサルティング株式会社

本文書の無断での引用・転載を禁止する

Contact us: info@bsdconsulting.co.jp

Copyright (c) 2015 BSD Consulting, Inc. All Rights Reserved.