

# FreeBSD動作検証レポート

## R110f-1E / 10.0-STABLE

### 対象ハードウェア

maker:NEC, product:Express5800/GT110f-S  
[N8100-1977Y], serial:3900316, version:FR1.3

### 対象OSバージョン

FreeBSD 10.0-STABLE #0 r262915: Sat Mar 8  
03:13:32 UTC 2014

2014年4月19日版

# BSDコンサルティング株式会社

本文書の無断での引用・転載を禁止する

Contact us: [info@bsdconsulting.co.jp](mailto:info@bsdconsulting.co.jp)

Copyright (c) 2014 BSD Consulting, Inc. All Rights Reserved.

# 動作検証レポート

# 要約

## ハードウェア基本情報

製品UUID	009d2bc0-ea1a-e311-8001-94de808e98d4
製品データ	maker:NEC, product:Express5800/GT110f-S [N8100-1977Y], serial:3900316, version:FR1.3
筐体データ	maker:NEC, serial:04, tag: _____, version:856-061659-001
CPU	Intel(R) Xeon(R) CPU E3-1220 v3 @ 3.10GHz
MEMORY	2097152[KB]
BIOS	reldate:08/09/2013, vendor:American Megatrends Inc., version:4.6.1012
ACPI	oem:AMI , revision:2, rsdp:0x000f0490, rsdt:0x7c81b028, xsdt:0x000000007c81b090
OS	FreeBSD 10.0-STABLE #0 r262915: Sat Mar 8 03:13:32 UTC 2014

## 基礎性能データ

メモリアクセス速度	29.225 GBi/sec
IPv4スタック処理速度	757.721 MBi/sec
IPv6スタック処理速度	676.164 MBi/sec

## 動作検証要約

FreeBSD 10.0-STABLE #0 r262915: Sat Mar 8 03:13:32 UTC 2014は、検証対象ハードウェア「maker:NEC, product:Express5800/GT110f-S [N8100-1977Y], serial:3900316, version:FR1.3」において正常に動作する。本機はFreeBSD 10.0-STABLE #0 r262915: Sat Mar 8 03:13:32 UTC 2014よりも前のバージョンでの使用は推奨できない。今後リリースが予定されているFreeBSD 10.1-RELEASEなどFreeBSD 10.0-STABLE #0 r262915: Sat Mar 8 03:13:32 UTC 2014以降のバージョンの使用が推奨される。

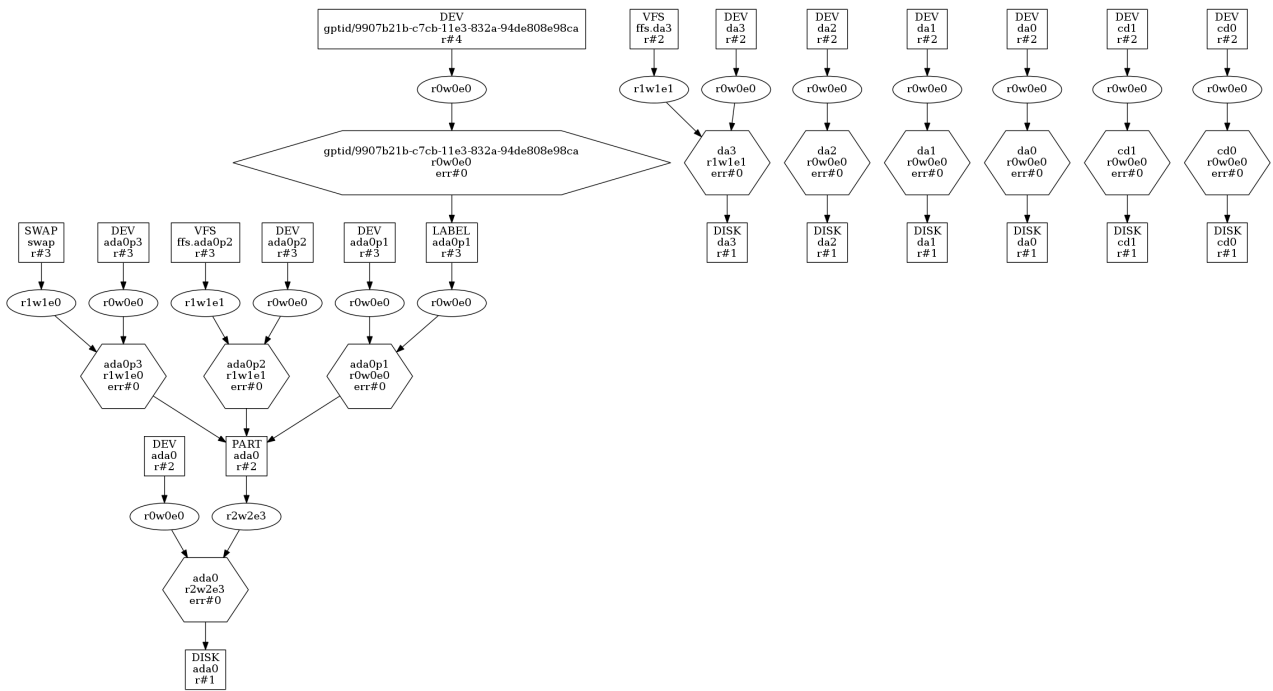
FreeBSD 10.1-RELEASEがリリースされるよりも前の段階でリリースバージョンでの使用が必要とされる場合、リリースバージョンでの使用が必要とされる場合、FreeBSD 10.0-RELEASEのユーザランドにFreeBSD 10.0-STABLEのカーネルを組み合わせて利用する方法を検討できる。本番環境での使用にあたっては実施前にその組み合わせでの負荷試験の実施が推奨される。

※ 長期間に渡る負荷試験の実施やカスタムカーネルの開発とご提供、データセンターまたはオンプレミスでのFreeBSDシステムの設計、セットアップ、デプロイなど詳しい業務に関しては弊社までお気軽にご相談ください。

## 互換情報

NEC Express5800/GT110f-S、NEC Express5800/R110f-1E、NEC Express5800/T110f-E、NEC Express5800/T110f-Sは同じマザーボードを採用している。本動作検証レポートの内容はNEC Express5800/GT110f-Sにおいて実施されたものだが、本検証レポートの内容はNEC Express5800/R110f-1E、NEC Express5800/T110f-E、NEC Express5800/T110f-Sにおいても有効。

# 検証機GEOMツリー



# 高負荷耐久試験

# 高負荷耐久試験

## 試験結果

検証対象ハードウェア(maker:NEC, product:Express5800/GT110f-S [N8100-1977Y], serial:3900316, version:FR1.3)は24時間高負荷耐久試験をクリアしており、所定の負荷に対して安定して動作するものとみられる。

不正処理高負荷耐久試験	クリア
通常ファイル作成高負荷耐久試験	クリア
FIFOファイル作成高負荷耐久試験	クリア
ディレクトリ作成高負荷耐久試験	クリア
ハードリンクファイル作成高負荷耐久試験	クリア
シンボリックリンクファイル作成高負荷耐久試験	クリア
ファイルロック機構高負荷耐久試験	クリア
メモリファイルマッピング機能高負荷耐久試験	クリア
ファイルシステム階層構造トラバース高負荷耐久試験	クリア
ファイルシステムパス解析高負荷耐久試験	クリア
ファイルシステムパスリネーム高負荷耐久試験	クリア
ファイルシステムライト・キャッシュリード高負荷耐久試験	クリア
ファイルシステムスワップ高負荷耐久試験	クリア
スレッド機構高負荷耐久試験	クリア
間接システムコール高負荷耐久試験	クリア
擬似ターミナル機構高負荷耐久試験	クリア
共有メモリ機構高負荷耐久試験	クリア
ネットワークソケット高負荷耐久試験	クリア
TCPスタック高負荷耐久試験	クリア
UDPスタック高負荷耐久試験	クリア



# 動作検証レポート

# 動作検証レポート

## ACPI認識データ

ACPI_APIC	Revision=3, OEMID=AMI, OEM_Table ID=0627, OEM_Revision=0x1072009, Creator_ID=AMI, Creator_Revision=0x10013
ACPI_BERT	Revision=1, OEMID=AMI, OEM_Table ID=AMI BERT, OEM_Revision=0x0, Creator_ID=AMI, Creator_Revision=0x10013
ACPI_DMAR	Revision=1, OEMID=INTEL, OEM_Table ID=HSW, OEM_Revision=0x1, Creator_ID=INTL, Creator_Revision=0x1
ACPI_DSDT	Revision=2, OEMID=AMI, OEM_Table ID=0627, OEM_Revision=0x17, Creator_ID=INTL, Creator_Revision=0x20091112
ACPI_FACP	Revision=5, OEMID=AMI, OEM_Table ID=0627, OEM_Revision=0x1072009, Creator_ID=AMI, Creator_Revision=0x10013, FACS=0x7cfc080, DSDT=0x7c81b1b8, SMI_CMD=0xb2, ACPI_ENABLE=0xa0, ACPI_DISABLE=0xa1, S4BIOS_REQ=0x0, FLUSH_STRIDE=16, DUTY_WIDTH=0, RESET_VALUE=0xf7
ACPI_FACS	HwSig=0x0000000e, Firm_Wake_Vec=0x00000000
ACPI_FPDT	Revision=1, OEMID=AMI, OEM_Table ID=0627, OEM_Revision=0x1072009, Creator_ID=AMI, Creator_Revision=0x10013
ACPI_HPET	Revision=1, OEMID=AMI, OEM_Table ID=0627, OEM_Revision=0x1072009, Creator_ID=AMI., Creator_Revision=0x5
ACPI_LPIT	Revision=1, OEMID=AMI, OEM_Table ID=0627, OEM_Revision=0x0, Creator_ID=AMI., Creator_Revision=0x5
ACPI_MCFG	Revision=1, OEMID=AMI, OEM_Table ID=0627, OEM_Revision=0x1072009, Creator_ID=MSFT, Creator_Revision=0x97
ACPI_PRAD	Revision=2, OEMID=PRADID, OEM_Table ID=PRADTID, OEM_Revision=0x1, Creator_ID=MSFT, Creator_Revision=0x3000001
ACPI_RSD_PTR	OEM=AMI, ACPI_Rev=2.0x(2), XSDT=0x7c81b090
ACPI_XSDT	Revision=1, OEMID=AMI, OEM_Table ID=0627, OEM_Revision=0x1072009, Creator_ID=AMI, Creator_Revision=0x10013
ACPI_SSDT_1	Length=1411, Revision=1, Checksum=21, OEMID=PmRef, OEM_Table ID=Cpu0Ist, OEM_Revision=0x3000, Creator_ID=INTL, Creator_Revision=0x20120711
ACPI_SSDT_2	Length=2781, Revision=1, Checksum=52, OEMID=PmRef, OEM_Table ID=CpuPm, OEM_Revision=0x3000, Creator_ID=INTL, Creator_Revision=0x20120711
ACPI_SSDT_3	Length=734, Revision=1, Checksum=194, OEMID=PmRef, OEM_Table ID=Cpu0Tst, OEM_Revision=0x3000, Creator_ID=INTL, Creator_Revision=0x20120711
ACPI_SSDT_4	Length=840, Revision=1, Checksum=77, OEMID=PmRef, OEM_Table ID=ApTst, OEM_Revision=0x3000, Creator_ID=INTL, Creator_Revision=0x20120711
ACPI_SSDT_5	Length=877, Revision=1, Checksum=62, OEMID=SataRe, OEM_Table ID=SataTabl, OEM_Revision=0x1000, Creator_ID=INTL, Creator_Revision=0x20120711
ACPI_SSDT_6	Length=13313, Revision=1, Checksum=230, OEMID=SaSsd, OEM_Table ID=SaSsd, OEM_Revision=0x3000, Creator_ID=INTL, Creator_Revision=0x20091112

## MFIデバイス認識データ

アダプタ	該当データなし
------	---------

ドライバ	該当データなし
ボリューム	該当データなし
コンフィグ	該当データなし

※ 対象となるデバイスがmfi(4)ドライバを使用しないストレージ構成の場合、当項目は該当データなし。

## MPTデバイス認識データ

アダプタ	該当データなし
ドライバ	該当データなし
ボリューム	該当データなし
コンフィグ	該当データなし

※ 対象となるデバイスがmpt(4)ドライバを使用しないストレージ構成の場合、当項目は該当データなし。

## NIC認識データ

NIC	bge0, bge1
bge0	flags=8843<UP,BROADCAST,RUNNING,SIMPLEX,MULTICAST>, metric=0, mtu=1500, options=c019b<RXCSUM, TXCSUM, VLAN_MTU, VLAN_HWTAGGING, VLAN_HWCSUM, TSO4, VLAN_HWTSO, LINKSTATE>, ether=94:de:80:8e:98:ca, inet=192.168.1.40 netmask 0xfffff00 broadcast 192.168.1.255, nd6_options=29<PERFORMNUD, IFDISABLED, AUTO_LINKLOCAL>, media=Ethernet autoselect (1000baseT <full- duplex, master>), status=active
bge1	flags=8802<BROADCAST, SIMPLEX, MULTICAST>, metric=0, mtu=1500, options=c019b<RXCSUM, TXCSUM, VLAN_MTU, VLAN_HWTAGGING, VLAN_HWCSUM, TSO4, VLAN_HWTSO, LINKSTATE>, ether=94:de:80:8e:98:cb, nd6_options=29<PERFORMNUD, IFDISABLED, AUTO_LINKLOCAL>, media=Ethernet autoselect

## カーネルデバイス認識データ

acpi	ad14(ada0)	ad14p1(ada0p1)	ad14p2(ada0p2)
ad14p3(ada0p3)	ada0	ada0p1	ada0p2
ada0p3	apm	apmctl	audit
bpf	bpf0(bpf)	cd0	cd1
console	consolectl	ctty	cuau0
cuau0.init	cuau0.lock	cuau1	cuau1.init
cuau1.lock	da0	da1	da2
devctl	devstat	dumpdev(ada0p3)	fd
fd/0	fd/1	fd/2	fido
geom.ctl	gptid	gptid/9907b21b-c7cb-11e3-832a-94de808e98ca	io
kbd0(ukbd0)	kbd1(kbdmux0)	kbd2(ukbd1)	kbdmux0
klog	kmem	led	led/ahci0.0.fault
led/ahci0.0.locate	led/ahci0.1.fault	led/ahci0.1.locate	led/ahci0.2.fault
led/ahci0.2.locate	led/ahci0.3.fault	led/ahci0.3.locate	led/ahci0.4.fault
led/ahci0.4.locate	led/ahci0.5.fault	led/ahci0.5.locate	log(/var/run/log)
mdctl	mem	midstat	nfslock
null	pass0	pass1	pass2
pass3	pass4	pass5	pass6
pass7	pci	random	ses0
sndstat	stderr(fd/2)	stdin(fd/0)	stdout(fd/1)
sysmouse	ttyu0	ttyu0.init	ttyu0.lock
ttyu1	ttyu1.init	ttyu1.lock	ttyv0
ttyv1	ttyv2	ttyv3	ttyv4
ttyv5	ttyv6	ttyv7	ttyv8
ttyv9	ttyva	ttyvb	ttyvc
ttyvd	ttyve	ttyvf	ufssuspend
ugen0.1(usb/0.1.0)	ugen1.1(usb/1.1.0)	ugen1.2(usb/1.2.0)	ugen1.3(usb/1.3.0)
ugen1.4(usb/1.4.0)	ugen2.1(usb/2.1.0)	ugen2.2(usb/2.2.0)	ugen2.3(usb/2.3.0)
ugen2.4(usb/2.4.0)	ugen2.5(usb/2.5.0)	ukbd0	ukbd1
ums0	urandom(random)	usb	usb/0.1.0

usb/0.1.1	usb/1.1.0	usb/1.1.1	usb/1.2.0
usb/1.2.1	usb/1.3.0	usb/1.3.1	usb/1.3.2
usb/1.4.0	usb/1.4.3	usb/1.4.4	usb/2.1.0
usb/2.1.1	usb/2.2.0	usb/2.2.1	usb/2.3.0
usb/2.3.1	usb/2.4.0	usb/2.4.1	usb/2.5.0
usb/2.5.1	usb/2.5.2	usbctl	xpt0
zero			

## PCI認識データ

1	pci0:0:0:0(hostb0), class=HOST-PCI, vendor='Intel Corporation', device='Haswell DRAM Controller'
2	pci0:0:20:0(xhci0), class=USB, vendor='Intel Corporation', device='Lynx Point USB xHCI Host Controller'
3	pci0:0:22:0(none0), class=simple comms, vendor='Intel Corporation', device='Lynx Point MEI Controller'
4	pci0:0:22:1(none1), class=simple comms, vendor='Intel Corporation', device='Lynx Point MEI Controller'
5	pci0:0:26:0(ehci0), class=USB, vendor='Intel Corporation', device='Lynx Point USB Enhanced Host Controller'
6	pci0:0:28:0(pci1), class=PCI-PCI, vendor='Intel Corporation', device='Lynx Point PCI Express Root Port'
7	pci0:0:28:4(pci2), class=PCI-PCI, vendor='Intel Corporation', device='Lynx Point PCI Express Root Port'
8	pci0:0:28:5(pci3), class=PCI-PCI, vendor='Intel Corporation', device='Lynx Point PCI Express Root Port'
9	pci0:0:29:0(ehci1), class=USB, vendor='Intel Corporation', device='Lynx Point USB Enhanced Host Controller'
10	pci0:0:31:0(isab0), class=PCI-ISA, vendor='Intel Corporation', device='Lynx Point LPC Controller'
11	pci0:0:31:2(ahci0), class=SATA, vendor='Intel Corporation', device='Lynx Point 6-port SATA Controller 1 [AHCI mode]'
12	pci0:0:31:3(none2), class=SMBus, vendor='Intel Corporation', device='Lynx Point SMBus Controller'
13	pci0:57:0:0(vgapci0), class=VGA, vendor='Matrox Electronics Systems Ltd.', device='MGA G200e [Pilot] ServerEngines (SEP1)'
14	pci0:58:0:0(bge0), class=ethernet, vendor='Broadcom Corporation', device='NetXtreme BCM5718 Gigabit Ethernet PCIe'
15	pci0:58:0:1(bge1), class=ethernet, vendor='Broadcom Corporation', device='NetXtreme BCM5718 Gigabit Ethernet PCIe'

## メモリ認識データ

1	0x0/0x10000 BIOS write-back fixed-base fixed-length set-by-firmware active
2	0x10000/0x10000 BIOS write-back fixed-base fixed-length set-by-firmware active
3	0x20000/0x10000 BIOS write-back fixed-base fixed-length set-by-firmware active
4	0x30000/0x10000 BIOS write-back fixed-base fixed-length set-by-firmware active
5	0x40000/0x10000 BIOS write-back fixed-base fixed-length set-by-firmware active
6	0x50000/0x10000 BIOS write-back fixed-base fixed-length set-by-firmware active
7	0x60000/0x10000 BIOS write-back fixed-base fixed-length set-by-firmware active
8	0x70000/0x10000 BIOS write-back fixed-base fixed-length set-by-firmware active
9	0x80000/0x4000 BIOS write-back fixed-base fixed-length set-by-firmware active
10	0x84000/0x4000 BIOS write-back fixed-base fixed-length set-by-firmware active
11	0x88000/0x4000 BIOS write-back fixed-base fixed-length set-by-firmware active
12	0x8c000/0x4000 BIOS write-back fixed-base fixed-length set-by-firmware active
13	0x90000/0x4000 BIOS write-back fixed-base fixed-length set-by-firmware active
14	0x94000/0x4000 BIOS write-back fixed-base fixed-length set-by-firmware active
15	0x98000/0x4000 BIOS write-back fixed-base fixed-length set-by-firmware active
16	0x9c000/0x4000 BIOS write-back fixed-base fixed-length set-by-firmware active
17	0xa0000/0x4000 BIOS uncacheable fixed-base fixed-length set-by-firmware active
18	0xa4000/0x4000 BIOS uncacheable fixed-base fixed-length set-by-firmware active
19	0xa8000/0x4000 BIOS uncacheable fixed-base fixed-length set-by-firmware active
20	0xac000/0x4000 BIOS uncacheable fixed-base fixed-length set-by-firmware active
21	0xb0000/0x4000 BIOS uncacheable fixed-base fixed-length set-by-firmware active
22	0xb4000/0x4000 BIOS uncacheable fixed-base fixed-length set-by-firmware active
23	0xb8000/0x4000 BIOS uncacheable fixed-base fixed-length set-by-firmware active
24	0xbc000/0x4000 BIOS uncacheable fixed-base fixed-length set-by-firmware active
25	0xc0000/0x1000 BIOS write-protect fixed-base fixed-length set-by-firmware active
26	0xc1000/0x1000 BIOS write-protect fixed-base fixed-length set-by-firmware active
27	0xc2000/0x1000 BIOS write-protect fixed-base fixed-length set-by-firmware active
28	0xc3000/0x1000 BIOS write-protect fixed-base fixed-length set-by-firmware active
29	0xc4000/0x1000 BIOS write-protect fixed-base fixed-length set-by-firmware active
30	0xc5000/0x1000 BIOS write-protect fixed-base fixed-length set-by-firmware active
31	0xc6000/0x1000 BIOS write-protect fixed-base fixed-length set-by-firmware active
32	0xc7000/0x1000 BIOS write-protect fixed-base fixed-length set-by-firmware active
33	0xc8000/0x1000 BIOS write-protect fixed-base fixed-length set-by-firmware active
34	0xc9000/0x1000 BIOS write-protect fixed-base fixed-length set-by-firmware active
35	0xca000/0x1000 BIOS write-protect fixed-base fixed-length set-by-firmware active
36	0xcb000/0x1000 BIOS write-protect fixed-base fixed-length set-by-firmware active
37	0xcc000/0x1000 BIOS uncacheable fixed-base fixed-length set-by-firmware active
38	0xcd000/0x1000 BIOS uncacheable fixed-base fixed-length set-by-firmware active
39	0xce000/0x1000 BIOS uncacheable fixed-base fixed-length set-by-firmware active
40	0xcf000/0x1000 BIOS uncacheable fixed-base fixed-length set-by-firmware active





83	0xfa000/0x1000 BIOS write-protect fixed-base fixed-length set-by-firmware active
84	0xfb000/0x1000 BIOS write-protect fixed-base fixed-length set-by-firmware active
85	0xfc000/0x1000 BIOS write-protect fixed-base fixed-length set-by-firmware active
86	0xfd000/0x1000 BIOS write-protect fixed-base fixed-length set-by-firmware active
87	0xfe000/0x1000 BIOS write-protect fixed-base fixed-length set-by-firmware active
88	0xff000/0x1000 BIOS write-protect fixed-base fixed-length set-by-firmware active
89	0x0/0x80000000 BIOS write-back set-by-firmware active

## 動作検証レポート 詳細データ

# 詳細データ

## カーネル環境変数データ詳細一覧

```
LINES="24"
bootfile="kernel"
comconsole_pcidv="
comconsole_port="1016"
comconsole_speed="9600"
console="vidconsole"
currdev="disk1p2:"
hint.acpi.0.oem="AMI"
hint.acpi.0.revision="2"
hint.acpi.0.rsdv="0x000f0490"
hint.acpi.0.rsdt="0x7c81b028"
hint.acpi.0.xsdt="0x00000007c81b090"
hint.acpi.0.xsdt_length="36"
hint.atkbd.0.at="atkbd"
hint.atkbd.0.irq="1"
hint.atkbd.0.at="isa"
hint.atkbd.0.port="0x060"
hint.atrtc.0.at="isa"
hint.atrtc.0.irq="8"
hint.atrtc.0.port="0x70"
hint.attimer.0.at="isa"
hint.attimer.0.irq="0"
hint.attimer.0.port="0x40"
hint.fd.0.at="fdc0"
hint.fd.0.drive="0"
hint.fd.1.at="fdc0"
hint.fd.1.drive="1"
hint.fdc.0.at="isa"
hint.fdc.0.drq="2"
hint.fdc.0.irq="6"
hint.fdc.0.port="0x3F0"
hint.ppc.0.at="isa"
hint.ppc.0.irq="7"
hint.psm.0.at="atkbd"
hint.psm.0.irq="12"
hint.sc.0.at="isa"
hint.sc.0.flags="0x100"
hint.uart.0.at="isa"
hint.uart.0.flags="0x10"
hint.uart.0.irq="4"
hint.uart.0.port="0x3F8"
hint.uart.1.at="isa"
hint.uart.1.irq="3"
hint.uart.1.port="0x2F8"
hint.wbwd.0.at="isa"
interpret="OK"
kernel="kernel"
kernel[0]="kernel"
kernel[1]="kernel.old"
kernel_options=""
kernelname="/boot/kernel/kernel"
loaddev="disk1p2:"
loader_conf_files="/boot/device.hints /boot/loader.conf /boot/loader.conf.local"
mac_iff="N0"
module_path="/boot/kernel;/boot/modules"
smbios.bios.reldate="08/09/2013"
smbios.bios.vendor="American Megatrends Inc."
smbios.bios.version="4.6.1012"
smbios.chassis.maker="NEC"
smbios.chassis.serial="04"
smbios.chassis.tag="-----"
smbios.chassis.version="856-061659-001"
smbios.memory.enabled="2097152"
smbios.planar.maker="GIGABYTE"
smbios.planar.product="GA-6LASV1"
smbios.planar.serial="0DG753100010"
smbios.planar.version="1.1B"
smbios.socket.enabled="1"
smbios.socket.populated="1"
smbios.system.maker="NEC"
smbios.system.product="Express5800/GT110f-S [N8100-1977Y]"
smbios.system.serial="3900316"
smbios.system.uuid="009d2bc0-ea1a-e311-8001-94de808e98d4"
smbios.system.version="FR1.3"
smbios.version="2.7"
```

```
temp_options=""  
vfs.root.mountfrom="ufs:/dev/ada0p2"  
vfs.root.mountfrom.options="rw"  
kern.devalias.ada0="ad14"
```

# カーネルステートデータ詳細一覧

```
kern.ostype: FreeBSD
kern.osrelease: 10.0-STABLE
kern.osrevision: 199506
kern.version: FreeBSD 10.0-STABLE #0 r262915: Sat Mar 8 03:13:32 UTC 2014
root@grind.freebsd.org:/usr/obj/usr/src/sys/GENERIC
kern.maxvnodes: 111775
kern.maxproc: 7364
kern.maxfiles: 62999
kern.argmax: 262144
kern.securelevel: -1
kern.hostname: G110f-S.bsdconsulting.co.jp
kern.hostid: 1254927536
kern.clockrate: { hz = 1000, tick = 1000, profhz = 8128, stathz = 127 }
kern.posix1version: 200112
kern.ngroups: 1023
kern.job_control: 1
kern.saved_ids: 0
kern.boottime: { sec = 1397884252, usec = 735069 } Sat Apr 19 14:10:52 2014
kern.domainname:
kern.osreldate: 1000704
kern.bootfile: /boot/kernel/kernel
kern.maxfilesperproc: 56691
kern.maxprocperuid: 6627
kern.ipc.maxsockbuf: 2097152
kern.ipc.sockbuf_waste_factor: 8
kern.ipc.max_linkhdr: 16
kern.ipc.max_protohdr: 60
kern.ipc.max_hdr: 76
kern.ipc.max_datalen: 92
kern.ipc.maxmbufmem: 1005432832
kern.ipc.nmbclusters: 122734
kern.ipc.nmbjumbop: 61366
kern.ipc.nmbjumbo9: 54546
kern.ipc.nmbjumbo16: 40908
kern.ipc.nmbufs: 785505
kern.ipc.maxpipekva: 32251904
kern.ipc.pipekva: 20480
kern.ipc.piperefragetry: 0
kern.ipc.pipeallocfail: 0
kern.ipc.piperesizefail: 0
kern.ipc.piperesizeallowed: 1
kern.ipc.msgmax: 16384
kern.ipc.msgmni: 40
kern.ipc.msgmnb: 2048
kern.ipc.msgql: 40
kern.ipc.msgsz: 8
kern.ipc.msgseg: 2048
kern.ipc.semni: 50
kern.ipc.semms: 340
kern.ipc.semnu: 150
kern.ipc.semmsl: 340
kern.ipc.semopm: 100
kern.ipc.semume: 50
kern.ipc.semusz: 632
kern.ipc.semvmx: 32767
kern.ipc.semaem: 16384
kern.ipc.shmmax: 536870912
kern.ipc.shmmni: 1
kern.ipc.shmmni: 192
kern.ipc.shmseg: 128
kern.ipc.shmall: 131072
kern.ipc.shm_use_phys: 0
kern.ipc.shm_allow_removed: 0
kern.ipc.soacceptqueue: 128
kern.ipc.numopensockets: 22
kern.ipc.maxsockets: 63000
kern.ipc.sendfile.readahead: 1
kern.dummy: 0
kern.ps_strings: 140737488351200
kern.usrstack: 140737488351232
kern.logsigexit: 1
kern.iov_max: 1024
kern.hostuuid: 009d2bc0-ea1a-e311-8001-94de808e98d4
kern.cam.sort_io_queues: 1
kern.cam.boot_delay: 0
kern.cam.num_doneqs: 1
kern.cam.dflags: 0
kern.cam.debug_delay: 0
kern.cam.pmp.retry_count: 1
kern.cam.pmp.default_timeout: 30
kern.cam.pmp.hide_special: 1
kern.cam.cam_srch_hi: 0
kern.cam.scsi_delay: 5000
kern.cam.cd.changer.min_busy_seconds: 5
kern.cam.cd.changer.max_busy_seconds: 15
```

```
kern.cam.cd.poll_period: 3
kern.cam.cd.retry_count: 4
kern.cam.cd.timeout: 30000
kern.cam.cd.0.minimum_cmd_size: 6
kern.cam.cd.1.minimum_cmd_size: 10
kern.cam.ada.legacy_aliases: 1
kern.cam.ada.retry_count: 4
kern.cam.ada.default_timeout: 30
kern.cam.ada.send_ordered: 1
kern.cam.ada.spindown_shutdown: 1
kern.cam.ada.spindown_suspend: 1
kern.cam.ada.read_ahead: 1
kern.cam.ada.write_cache: 1
kern.cam.ada.0.read_ahead: -1
kern.cam.ada.0.write_cache: -1
kern.cam.ada.0.sort_io_queue: 0
kern.cam.da.poll_period: 3
kern.cam.da.retry_count: 4
kern.cam.da.default_timeout: 60
kern.cam.da.send_ordered: 1
kern.cam.da.0.delete_method: NONE
kern.cam.da.0.delete_max: 65536
kern.cam.da.0.minimum_cmd_size: 10
kern.cam.da.0.sort_io_queue: -1
kern.cam.da.0.error_inject: 0
kern.cam.da.1.delete_method: NONE
kern.cam.da.1.delete_max: 65536
kern.cam.da.1.minimum_cmd_size: 10
kern.cam.da.1.sort_io_queue: -1
kern.cam.da.1.error_inject: 0
kern.cam.da.2.delete_method: NONE
kern.cam.da.2.delete_max: 65536
kern.cam.da.2.minimum_cmd_size: 10
kern.cam.da.2.sort_io_queue: -1
kern.cam.da.2.error_inject: 0
kern.cam.da.3.delete_method: NONE
kern.cam.da.3.delete_max: 65536
kern.cam.da.3.minimum_cmd_size: 10
kern.cam.da.3.sort_io_queue: -1
kern.cam.da.3.error_inject: 0
kern.cam.enc.emulate_array_devices: 1
kern.random.adaptors: yarrow,dummy
kern.random.active_adaptor: yarrow
kern.random.live_entropy_sources: Hardware, Intel IvyBridge+ RNG
kern.random.yarrow.gengateinterval: 10
kern.random.yarrow.bins: 10
kern.random.yarrow.fastthresh: 96
kern.random.yarrow.slowthresh: 128
kern.random.yarrow.slowverthresh: 2
kern.random.sys.seeded: 1
kern.random.sys.harvest.ethernet: 1
kern.random.sys.harvest.point_to_point: 1
kern.random.sys.harvest.interrupt: 1
kern.random.sys.harvest.swi: 1
kern.disks: da3 da2 da1 da0 cd1 cd0 ada0
kern.geom.dev.delete_max_sectors: 262144
kern.geom.disk.ada0.led:
kern.geom.disk.cd0.led:
kern.geom.disk.cd1.led:
kern.geom.disk.da0.led:
kern.geom.disk.da1.led:
kern.geom.disk.da2.led:
kern.geom.disk.da3.led:
kern.geom.transient_maps: 422
kern.geom.transient_map_retries: 10
kern.geom.transient_map_hard_failures: 0
kern.geom.transient_map_soft_failures: 0
kern.geom.inflight_transient_maps: 0
kern.geom.confxml: <mesh>
kern.geom.confdot: digraph geom {
kern.geom.conftxt: 0 DISK da3 15504900096 512 hd 255 sc 63
kern.geom.debugflags: 0
kern.geom.notaste: 0
kern.geom.collectstats: 1
kern.geom.label.debug: 0
kern.geom.label.ext2fs.enable: 1
kern.geom.label.iso9660.enable: 1
kern.geom.label.msdosfs.enable: 1
kern.geom.label.ntfs.enable: 1
kern.geom.label.reiserfs.enable: 1
kern.geom.label.ufsid.enable: 1
kern.geom.label.ufs.enable: 1
kern.geom.label.gpt.enable: 1
kern.geom.label.gptid.enable: 1
kern.geom.label.disk_ident.enable: 1
kern.geom.part.check_integrity: 1
kern.geom.raid.enable: 1
kern.geom.raid.aggressive_spare: 0
kern.geom.raid.debug: 0
kern.geom.raid.read_err_thresh: 10
kern.geom.raid.start_timeout: 30
```

```

kern.geom.raid.clean_time: 5
kern.geom.raid.disconnect_on_failure: 1
kern.geom.raid.name_format: 0
kern.geom.raid.idle_threshold: 1000000
kern.geom.raid.legacy_aliases: 1
kern.geom.raid.ddf.enable: 1
kern.geom.raid.intel.enable: 1
kern.geom.raid.jmicron.enable: 1
kern.geom.raid.nvidia.enable: 1
kern.geom.raid.promise.enable: 1
kern.geom.raid.sii.enable: 1
kern.geom.raid.concat.enable: 1
kern.geom.raid.raid0.enable: 1
kern.geom.raid.raid1.rebuild_slab_size: 1048576
kern.geom.raid.raid1.rebuild_fair_io: 20
kern.geom.raid.raid1.rebuild_cluster_idle: 100
kern.geom.raid.raid1.rebuild_meta_update: 1024
kern.geom.raid.raid1.enable: 1
kern.geom.raid.raid1e.rebuild_slab_size: 1048576
kern.geom.raid.raid1e.rebuild_fair_io: 20
kern.geom.raid.raid1e.rebuild_cluster_idle: 100
kern.geom.raid.raid1e.rebuild_meta_update: 1024
kern.geom.raid.raid1e.enable: 1
kern.geom.raid.raid5.enable: 1
kern.elf64.fallback_brand: -1
kern.elf64.nxstack: 1
kern.elf32.fallback_brand: -1
kern.elf32.nxstack: 1
kern.elf32.read_exec: 0
kern.init_path: /sbin/init:/sbin/oinit:/sbin/init.bak:/rescue/init
kern.init_shutdown_timeout: 120
kern.acct_suspend: 2
kern.acct_resume: 4
kern.acct_chkfreq: 15
kern.acct_configured: 0
kern.acct_suspended: 0
kern.cp_time: 352 1 2066 1003 1425694
kern.cp_times: 98 1 523 712 355974 84 0 490 121 356574 78 0 518 86 356588 92 0 535 84 356558
kern.console: ttyv0,/ttyv0,uart,
kern.consmute: 0
kern.conmsgbuf_size: 8192
kern.constty_wakeups_per_second: 5
kern.openfiles: 72
kern.eventtimer.et.LAPIC.flags: 7
kern.eventtimer.et.LAPIC.frequency: 49885504
kern.eventtimer.et.LAPIC.quality: 600
kern.eventtimer.et.HPET.flags: 7
kern.eventtimer.et.HPET.frequency: 14318180
kern.eventtimer.et.HPET.quality: 550
kern.eventtimer.et.HPET1.flags: 3
kern.eventtimer.et.HPET1.frequency: 14318180
kern.eventtimer.et.HPET1.quality: 440
kern.eventtimer.et.HPET2.flags: 3
kern.eventtimer.et.HPET2.frequency: 14318180
kern.eventtimer.et.HPET2.quality: 440
kern.eventtimer.et.HPET3.flags: 3
kern.eventtimer.et.HPET3.frequency: 14318180
kern.eventtimer.et.HPET3.quality: 440
kern.eventtimer.et.HPET4.flags: 3
kern.eventtimer.et.HPET4.frequency: 14318180
kern.eventtimer.et.HPET4.quality: 440
kern.eventtimer.et.RTC.flags: 17
kern.eventtimer.et.RTC.frequency: 32768
kern.eventtimer.et.RTC.quality: 0
kern.eventtimer.et.i8254.flags: 1
kern.eventtimer.et.i8254.frequency: 1193182
kern.eventtimer.et.i8254.quality: 100
kern.eventtimer.choice: LAPIC(600) HPET(550) HPET1(440) HPET2(440) HPET3(440) HPET4(440) i8254(100) RTC(0)
kern.eventtimer.singlemul: 2
kern.eventtimer.idletick: 0
kern.eventtimer.timer: LAPIC
kern.eventtimer.periodic: 0
kern.kq_calloutmax: 4096
kern.stackprot: 7
kern.ps_arg_cache_limit: 256
kern.disallow_high_osrel: 0
kern.lastpid: 1342
kern.randompid: 0
kern.ktrace.genio_size: 4096
kern.ktrace.request_pool: 100
kern.module_path: /boot/kernel;/boot/modules
kern.malloc_count: 346
kern.ident: GENERIC
kern.compiler_version: FreeBSD clang version 3.3 (tags/RELEASE_33/final 183502) 20130610
kern.maxusers: 459
kern.supported_archs: amd64 i386
kern.confxt: options CONFIG_AUTOGENERATED
kern.features.scbus: 1
kern.features.compat_frebsd_32bit: 1
kern.features.ata_cam: 1
kern.features.nfscl: 1

```

```

kern.features.nfsd: 1
kern.features.geom_label: 1
kern.features.geom_part_bsd: 1
kern.features.geom_part_ebr: 1
kern.features.geom_part_ebr_compat: 1
kern.features.geom_part_gpt: 1
kern.features.geom_part_mbr: 1
kern.features.kposix_priority_scheduling: 1
kern.features.kdtrace_hooks: 1
kern.features.ktrace: 1
kern.features.compat_freebsd4: 1
kern.features.compat_freebsd5: 1
kern.features.compat_freebsd6: 1
kern.features.compat_freebsd7: 1
kern.features.hwpmc_hooks: 1
kern.features.stack: 1
kern.features.security_capability_mode: 1
kern.features.security_capabilities: 1
kern.features.process_descriptors: 1
kern.features.sysv_msg: 1
kern.features.sysv_sem: 1
kern.features.sysv_shm: 1
kern.features.posix_shm: 1
kern.features.inet: 1
kern.features.inet6: 1
kern.features.audit: 1
kern.features.security_mac: 1
kern.features.uffs_snapshot: 1
kern.features.softupdates: 1
kern.features.ufs_acl: 1
kern.features.ufs_gjournal: 1
kern.features.ufs_quota: 1
kern.features.ufs_quota64: 1
kern.pid_max: 99999
kern.fallback_elf_brand: -1
kern.hwpmc.softevents: 16
kern.kstack_pages: 4
kern.panic_reboot_wait_time: 15
kern.sync_on_panic: 0
kern.shutdown.show_busybufs: 0
kern.shutdown.poweroff_delay: 5000
kern.shutdown.kproc_shutdown_wait: 60
kern.shutdown.dumpdevname: ada0p3
kern.forcesigexit: 1
kern.sigqueue.max_pending_per_proc: 128
kern.sigqueue.preallocate: 1024
kern.sigqueue.overflow: 0
kern.sigqueue.alloc_fail: 0
kern.sugid_coredump: 0
kern.capmode_coredump: 0
kern.coredump: 1
kern.nodump_coredump: 0
kern.corefile: %N.core
kern.fscale: 2048
kern.timecounter.tc.HPET.mask: 4294967295
kern.timecounter.tc.HPET.counter: 2576425902
kern.timecounter.tc.HPET.frequency: 14318180
kern.timecounter.tc.HPET.quality: 950
kern.timecounter.tc.i8254.mask: 65535
kern.timecounter.tc.i8254.counter: 43866
kern.timecounter.tc.i8254.frequency: 1193182
kern.timecounter.tc.i8254.quality: 0
kern.timecounter.tc.ACPI-fast.mask: 16777215
kern.timecounter.tc.ACPI-fast.counter: 3723636
kern.timecounter.tc.ACPI-fast.frequency: 3579545
kern.timecounter.tc.ACPI-fast.quality: 900
kern.timecounter.tc.TSC-low.mask: 4294967295
kern.timecounter.tc.TSC-low.counter: 963631562
kern.timecounter.tc.TSC-low.frequency: 1546450542
kern.timecounter.tc.TSC-low.quality: 1000
kern.timecounter.stepwarnings: 0
kern.timecounter.alloweddeviation: 5
kern.timecounter.hardware: TSC-low
kern.timecounter.choice: TSC-low(1000) ACPI-fast(900) i8254(0) HPET(950) dummy(-1000000)
kern.timecounter.tick: 1
kern.timecounter.fast_gettime: 1
kern.timecounter.invariant_tsc: 1
kern.timecounter.smp_tsc: 1
kern.timecounter.smp_tsc_adjust: 0
kern.timecounter.tsc_shift: 1
kern.threads.max_threads_per_proc: 1500
kern.threads.max_threads_hits: 0
kern.ncallout: 18508
kern.callout_stat: 0
kern.sched.cpusetsize: 8
kern.sched.preemption: 1
kern.sched.name: ULE
kern.sched.quantum: 94488
kern.sched.slice: 12
kern.sched.interact: 30
kern.sched.preempt_thresh: 80

```



```

kern.sched.static_boost: 152
kern.sched.idlespins: 10000
kern.sched.idlespinthresh: 157
kern.sched.affinity: 1
kern.sched.balance: 1
kern.sched.balance_interval: 127
kern.sched.steal_idle: 1
kern.sched.steal_thresh: 2
kern.sched.topology_spec: <groups>
kern.ccpu: 0
kern.devstat.numdevs: 15
kern.devstat.generation: 264
kern.devstat.version: 6
kern.hintmode: 0
kern.kobj_methodcount: 229
kern.log_wakeups_per_second: 5
kern.msgbuf_show_timestamp: 0
kern.hz: 1000
kern.nbuf: 13264
kern.nswbuf: 256
kern.msgbufsize: 98304
kern.maxswzone: 0
kern.maxbcache: 0
kern.bio_transient_maxcnt: 1024
kern.maxtsiz: 134217728
kern.dfldsiz: 34359738368
kern.maxdsiz: 34359738368
kern.dflssiz: 8388608
kern.maxssiz: 536870912
kern.sgrowsiz: 131072
kern.vm_guest: none
kern.log_console_output: 1
kern.log_console_add_linefeed: 0
kern.always_console_output: 0
kern.msgbuf:
kern.msgbuf_clear: 0
kern.smp.maxid: 3
kern.smp.maxcpus: 64
kern.smp.active: 1
kern.smp.disabled: 0
kern.smp.cpus: 4
kern.smp.topology: 0
kern.smp.forward_signal_enabled: 1
kern.tty_inq_flush_secure: 1
kern.tty_nin: 81
kern.tty_nout: 5151
kern.filedelay: 30
kern.dirdelay: 29
kern.metadelay: 28
kern.minvnodes: 27943
kern.chroot_allow_open_directories: 1
vm.vmtotal:
System wide totals computed every five seconds: (values in kilobytes)
Processes: (RUNQ: 1 Disk Wait: 0 Page Wait: 0 Sleep: 22)
Virtual Memory: (Total: 495920K Active: 473824K)
Real Memory: (Total: 85176K Active: 26868K)
Shared Virtual Memory: (Total: 16796K Active: 5796K)
Shared Real Memory: (Total: 5840K Active: 5352K)
Free Memory: 1835964K
vm.loadavg: { 0.06 0.06 0.02 }
vm.v_free_min: 3142
vm.v_free_target: 10501
vm.v_free_reserved: 689
vm.v_inactive_target: 15751
vm.v_cache_min: 0
vm.v_cache_max: 0
vm.v_pageout_free_min: 34
vm.swap_enabled: 1
vm.md_malloc_wait: 0
vm.kmem_size: 2010865664
vm.kmem_size_min: 0
vm.kmem_size_max: 1319413950874
vm.kmem_size_scale: 1
vm.kmem_map_size: 14069760
vm.kmem_map_free: 1996795904
vm.swap_total: 4172435456
vm.swap_reserved: 263581696
vm.overcommit: 0
vm.swap_async_max: 4
vm.dmmmax: 32
vm.nswapdev: 1
vm.zone_count: 100
vm.zone_warnings: 1
vm.kstack_cache_size: 128
vm.kstacks: 96
vm.swap_idle_threshold1: 2
vm.swap_idle_threshold2: 10
vm.exec_map_entries: 16
vm.min_kernel_address: 18446741874686296064
vm.max_kernel_address: 18446744073709547520
vm.v_free_severe: 1915

```

```

vm.stats.sys.v_swch: 493654
vm.stats.sys.v_trap: 110412
vm.stats.sys.v_syscall: 154166
vm.stats.sys.v_intr: 49850
vm.stats.sys.v_soft: 67632
vm.stats.vm.v_vm_faults: 91132
vm.stats.vm.v_io_faults: 827
vm.stats.vm.v_cow_faults: 38079
vm.stats.vm.v_cow_optim: 233
vm.stats.vm.v_zfod: 38777
vm.stats.vm.v_ozfod: 0
vm.stats.vm.v_swapin: 0
vm.stats.vm.v_swapout: 0
vm.stats.vm.v_swappgsin: 0
vm.stats.vm.v_swappgsout: 0
vm.stats.vm.v_vnodein: 859
vm.stats.vm.v_vnodeout: 0
vm.stats.vm.v_vnodepgsin: 5600
vm.stats.vm.v_vnodepgsout: 0
vm.stats.vm.v_intrans: 0
vm.stats.vm.v_reactivated: 0
vm.stats.vm.v_pdwakeups: 0
vm.stats.vm.v_pdpages: 13449
vm.stats.vm.v_tcached: 1696
vm.stats.vm.v_dfree: 0
vm.stats.vm.v_pfree: 54812
vm.stats.vm.v_tfree: 125388
vm.stats.vm.v_page_size: 4096
vm.stats.vm.v_page_count: 490934
vm.stats.vm.v_free_reserved: 689
vm.stats.vm.v_free_target: 10501
vm.stats.vm.v_free_min: 3142
vm.stats.vm.v_free_count: 457294
vm.stats.vm.v_wire_count: 23523
vm.stats.vm.v_active_count: 3701
vm.stats.vm.v_inactive_target: 15751
vm.stats.vm.v_inactive_count: 4628
vm.stats.vm.v_cache_count: 1696
vm.stats.vm.v_cache_min: 0
vm.stats.vm.v_cache_max: 0
vm.stats.vm.v_pageout_free_min: 34
vm.stats.vm.v_interrupt_free_min: 2
vm.stats.vm.v_forks: 1071
vm.stats.vm.v_vforks: 254
vm.stats.vm.v_rforks: 0
vm.stats.vm.v_kthreads: 17
vm.stats.vm.v_forkpages: 39165
vm.stats.vm.v_vforkpages: 9032
vm.stats.vm.v_rforkpages: 0
vm.stats.vm.v_kthreadpages: 0
vm.stats.misc.zero_page_count: 26
vm.stats.misc.cnt_prezero: 0
vm.stats.object.collapses: 3416
vm.stats.object.bypasses: 423
vm.old_mlock: 0
vm.old_msync: 0
vm.boot_pages: 64
vm.tryrelock_restart: 0
vm.pageout_wakeup_thresh: 3454
vm.max_laundry: 32
vm.pageout_update_period: 600
vm.lowmem_period: 10
vm.swap_idle_enabled: 0
vm.defer_swapspace_pageouts: 0
vm.disable_swapspace_pageouts: 0
vm.pageout_lock_miss: 0
vm.max_wired: 158316
vm.phys_free:
DOMAIN 0:
FREE LIST 0:
FREE LIST 1:
vm.phys_segs:
SEGMENT 0:
start:    0x10000
end:      0x98000
domain:   0
free list: 0xffffffff814a3cb8
SEGMENT 1:
start:    0x100000
end:      0x200000
domain:   0
free list: 0xffffffff814a3cb8
SEGMENT 2:
start:    0x1844000
end:      0x665a3000
domain:   0
free list: 0xffffffff814a3910
SEGMENT 3:
start:    0x6989a000
end:      0x7c769000
domain:   0

```

free list: 0xffffffff814a3910  
vm.ndomains: 1  
vm.reserv.broken: 0  
vm.reserv.freed: 4698  
vm.reserv.partpopq:  
-1: 154824K, 83  
vm.reserv.reclaimed: 0  
vm.idlezero\_enable: 0  
vm.pmap.pat\_works: 1  
vm.pmap.pg\_ps\_enabled: 1  
vm.pmap.pcid\_enabled: 0  
vm.pmap.invpqid\_works: 0  
vm.pmap.pcid\_save\_cnt: 0  
vm.pmap.pde.demotions: 44  
vm.pmap.pde.mappings: 0  
vm.pmap.pde.p\_failures: 24  
vm.pmap.pde.promotions: 63  
vm.pmap.pdpe.demotions: 1  
vm.kvm\_size: 2199023251456  
vm.kvm\_free: 2196542320640  
vfs.ufs.dirhash\_minsize: 2560  
vfs.ufs.dirhash\_maxmem: 3387392  
vfs.ufs.dirhash\_mem: 52681  
vfs.ufs.dirhash\_docheck: 0  
vfs.ufs.dirhash\_lowmemcount: 0  
vfs.ufs.dirhash\_reclaimage: 60  
vfs.ufs.rename\_restarts: 0  
vfs.nfs.downdelayinitial: 12  
vfs.nfs.downdelayinterval: 30  
vfs.nfs.bufpackets: 4  
vfs.nfs.reconnects: 0  
vfs.nfs.nfs3\_jukebox\_delay: 10  
vfs.nfs.skip\_wcc\_data\_onerr: 1  
vfs.nfs.realign\_test: 0  
vfs.nfs.realign\_count: 0  
vfs.nfs.callback\_addr:  
vfs.nfs.debuglevel: 0  
vfs.nfs.access\_cache\_timeout: 60  
vfs.nfs.prime\_access\_cache: 0  
vfs.nfs.commit\_on\_close: 0  
vfs.nfs.clean\_pages\_on\_close: 1  
vfs.nfs.nfs\_directio\_enable: 0  
vfs.nfs.nfs\_keep\_dirty\_on\_error: 0  
vfs.nfs.nfs\_directio\_allow\_mmap: 1  
vfs.nfs.nfs\_ip\_paranoia: 1  
vfs.nfs.diskless\_valid: 0  
vfs.nfs.diskless\_rootpath:  
vfs.nfs.iodmaxidle: 120  
vfs.nfs.iodmin: 0  
vfs.nfs.iodmax: 20  
vfs.nfs.defect: 0  
vfs.devfs.generation: 172  
vfs.devfs.rule\_depth: 1  
vfs.nfsd.disable\_checkutf8: 0  
vfs.nfsd.nfs\_privport: 0  
vfs.nfsd.server\_min\_nfsvers: 2  
vfs.nfsd.server\_max\_nfsvers: 4  
vfs.nfsd.async: 0  
vfs.nfsd.mirrormnt: 1  
vfs.nfsd.commit\_blks: 0  
vfs.nfsd.commit\_miss: 0  
vfs.nfsd.issue\_delegations: 0  
vfs.nfsd.enable\_locallocks: 0  
vfs.nfsd.tcphighwater: 0  
vfs.nfsd.udphighwater: 500  
vfs.nfsd.tcpcachetimeo: 43200  
vfs.nfsd.cachetcp: 1  
vfs.nfsd.minthreads: 1  
vfs.nfsd.maxthreads: 1  
vfs.nfsd.threads: 0  
vfs.nfsd.request\_space\_used: 0  
vfs.nfsd.request\_space\_used\_highest: 0  
vfs.nfsd.request\_space\_high: 47185920  
vfs.nfsd.request\_space\_low: 31457280  
vfs.nfsd.request\_space\_throttled: 0  
vfs.nfsd.request\_space\_throttle\_count: 0  
vfs.nfsd.fha.enable: 1  
vfs.nfsd.fha.bin\_shift: 22  
vfs.nfsd.fha.max\_nfsds\_per\_fh: 8  
vfs.nfsd.fha.max\_reqs\_per\_nfsd: 0  
vfs.nfsd.fha.fhe\_stats: No file handle entries.  
vfs.pfs.trace: 0  
vfs.pfs.vncache.entries: 0  
vfs.pfs.vncache.maxentries: 0  
vfs.pfs.vncache.hits: 0  
vfs.pfs.vncache.misses: 0  
vfs.acl\_nfs4\_old\_semantics: 0  
vfs.vmioidirenable: 1  
vfs.runningbufspace: 0  
vfs.bufspace: 45334528  
vfs.unmapped\_bufspace: 37781504

vfs.maxbufspace: 217317376  
vfs.bufmallocspace: 0  
vfs.maxmalloccbufspace: 10833100  
vfs.lobufspace: 216596480  
vfs.hibufspace: 216662016  
vfs.bufreusecnt: 1501  
vfs.buffreekvacnt: 117  
vfs.bufdefragcnt: 0  
vfs.lorunningspace: 2293760  
vfs.hirunningspace: 3407872  
vfs.dirtybufferflushes: 0  
vfs.bdwriteskip: 0  
vfs.altbufferflushes: 0  
vfs.recursiveflushes: 372  
vfs.numdirtybuffers: 460  
vfs.lodirtybuffers: 1668  
vfs.hidirtybuffers: 3336  
vfs.dirtybufthresh: 3002  
vfs.numfreebuffers: 12802  
vfs.lofreebuffers: 741  
vfs.hifreebuffers: 1482  
vfs.getnewbufcalls: 1553  
vfs.getnewbufrestarts: 0  
vfs.mappingrestarts: 0  
vfs.flushbufqtarget: 100  
vfs.notbufdflushes: 0  
vfs.barrierwrites: 4  
vfs.unmapped\_buf\_allowed: 1  
vfs.flushwithdeps: 0  
vfs.ncnegfactor: 16  
vfs.ncsizefactor: 2  
vfs.cache.numneg: 41  
vfs.cache.numcache: 939  
vfs.cache.numcalls: 50753  
vfs.cache.dothis: 1021  
vfs.cache.dotdothis: 21  
vfs.cache.numchecks: 47189  
vfs.cache.nummiss: 2501  
vfs.cache.nummisszap: 32  
vfs.cache.numposzaps: 64  
vfs.cache.numposhits: 40928  
vfs.cache.numnegzaps: 436  
vfs.cache.numneghits: 5750  
vfs.cache.numupgrades: 0  
vfs.cache.numfullpathcalls: 33  
vfs.cache.numfullpathfail1: 0  
vfs.cache.numfullpathfail2: 0  
vfs.cache.numfullpathfail4: 0  
vfs.cache.numfullpathfound: 33  
vfs.write\_behind: 1  
vfs.read\_max: 64  
vfs.read\_min: 1  
vfs.typhenumhash: 1  
vfs.lookup\_shared: 1  
vfs.usermount: 0  
vfs.numvnodes: 1313  
vfs.wantfreevnodes: 27943  
vfs.freevnodes: 28  
vfs.vlru\_allow\_cache\_src: 0  
vfs.reassignbufcalls: 2124  
vfs.timestamp\_precision: 0  
vfs.worklist\_len: 403  
vfs.ffs.doasyncfree: 1  
vfs.ffs.dorealloclblks: 1  
vfs.ffs.compute\_summary\_at\_mount: 0  
net.local.stream.sendspace: 8192  
net.local.stream.recvspace: 8192  
net.local.dgram.maxdgram: 2048  
net.local.dgram.recvspace: 4096  
net.local.seqpacket.maxseqpacket: 8192  
net.local.seqpacket.recvspace: 8192  
net.local.inflight: 0  
net.local.deferred: 0  
net.local.recycled: 0  
net.local.taskcount: 0  
net.inet.ip.portrange.lowfirst: 1023  
net.inet.ip.portrange.lowlast: 600  
net.inet.ip.portrange.first: 10000  
net.inet.ip.portrange.last: 65535  
net.inet.ip.portrange.hifirst: 49152  
net.inet.ip.portrange.hilast: 65535  
net.inet.ip.portrange.reservedhigh: 1023  
net.inet.ip.portrange.reservedlow: 0  
net.inet.ip.portrange.randomized: 1  
net.inet.ip.portrange.randomcps: 10  
net.inet.ip.portrange.randomtime: 45  
net.inet.ip.forwarding: 0  
net.inet.ip.redirect: 1  
net.inet.ip.ttl: 64  
net.inet.ip.rtxpire: 3600  
net.inet.ip.rtmixpire: 10

net.inet.ip.rtmaxcache: 128  
net.inet.ip.sourceroute: 0  
net.inet.ip.intr\_queue\_maxlen: 256  
net.inet.ip.intr\_queue\_drops: 0  
net.inet.ip.accept\_sourceroute: 0  
net.inet.ip.keepfaith: 0  
net.inet.ip.gifttl: 30  
net.inet.ip.no\_same\_prefix: 0  
net.inet.ip.random\_id\_period: 8192  
net.inet.ip.random\_id\_collisions: 0  
net.inet.ip.random\_id\_total: 0  
net.inet.ip.mcast.maxgrpsrc: 512  
net.inet.ip.mcast.maxsocksrc: 128  
net.inet.ip.mcast.loop: 1  
net.inet.ip.fastforwarding: 0  
net.inet.ip.sendsourcequench: 0  
net.inet.ip.random\_id: 0  
net.inet.ip.check\_interface: 0  
net.inet.ip.fragpackets: 0  
net.inet.ip.maxfragsperpacket: 16  
net.inet.ip.maxfragpackets: 3835  
net.inet.ip.process\_options: 1  
net.inet.icmp.maskrepl: 0  
net.inet.icmp.icmplim: 200  
net.inet.icmp.icmplim\_output: 1  
net.inet.icmp.maskfake: 0  
net.inet.icmp.log\_redirect: 0  
net.inet.icmp.reply\_src:  
net.inet.icmp.reply\_from\_interface: 0  
net.inet.icmp.quotelen: 8  
net.inet.icmp.bmcastecho: 0  
net.inet.icmp.drop\_redirect: 0  
net.inet.igmp.recvifkludge: 1  
net.inet.igmp.sendra: 1  
net.inet.igmp.sendlocal: 1  
net.inet.igmp.vlenable: 1  
net.inet.igmp.v2enable: 1  
net.inet.igmp.legacysupp: 0  
net.inet.igmp.default\_version: 3  
net.inet.igmp.gsrdelay: 10  
net.inet.tcp.rfc1323: 1  
net.inet.tcp.mssdflt: 536  
net.inet.tcp.keeidle: 7200000  
net.inet.tcp.keeintvl: 75000  
net.inet.tcp.sendspace: 32768  
net.inet.tcp.recvspace: 65536  
net.inet.tcp.keepinit: 75000  
net.inet.tcp.delacktime: 100  
net.inet.tcp.v6mssdflt: 1220  
net.inet.tcp.cc.algorithm: newreno  
net.inet.tcp.cc.available: newreno  
net.inet.tcp.hostcache.cachelimit: 15360  
net.inet.tcp.hostcache.hashsize: 512  
net.inet.tcp.hostcache.bucketlimit: 30  
net.inet.tcp.hostcache.count: 0  
net.inet.tcp.hostcache.expire: 3600  
net.inet.tcp.hostcache.prune: 300  
net.inet.tcp.hostcache.purge: 0  
net.inet.tcp.log\_in\_vain: 0  
net.inet.tcp.blackhole: 0  
net.inet.tcp.delayed\_ack: 1  
net.inet.tcp.drop\_synfin: 0  
net.inet.tcp.rfc3042: 1  
net.inet.tcp.rfc3390: 1  
net.inet.tcp.experimental.initswnd10: 1  
net.inet.tcp.rfc3465: 1  
net.inet.tcp.abc\_l\_var: 2  
net.inet.tcp.ecn.enable: 0  
net.inet.tcp.ecn.maxretries: 1  
net.inet.tcp.insecure\_rst: 0  
net.inet.tcp.recvbuf\_auto: 1  
net.inet.tcp.recvbuf\_inc: 16384  
net.inet.tcp.recvbuf\_max: 2097152  
net.inet.tcp.path\_mtu\_discovery: 1  
net.inet.tcp.tso: 1  
net.inet.tcp.sendbuf\_auto: 1  
net.inet.tcp.sendbuf\_inc: 8192  
net.inet.tcp.sendbuf\_max: 2097152  
net.inet.tcp.reass.maxsegments: 7700  
net.inet.tcp.reass.cursegments: 0  
net.inet.tcp.reass.overflow: 0  
net.inet.tcp.sack.enable: 1  
net.inet.tcp.sack.maxholes: 128  
net.inet.tcp.sack.globalmaxholes: 65536  
net.inet.tcp.sack.globalholes: 0  
net.inet.tcp.minmss: 216  
net.inet.tcp.log\_debug: 0  
net.inet.tcp.tcbhashsize: 16384  
net.inet.tcp.do\_tcpdrain: 1  
net.inet.tcp.pcbcount: 3  
net.inet.tcp.icmp\_may\_rst: 1

```
net.inet.tcp.isn_reseed_interval: 0
net.inet.tcp.soreceive_stream: 0
net.inet.tcp.syncookies: 1
net.inet.tcp.syncookies_only: 0
net.inet.tcp.syncache.bucketlimit: 30
net.inet.tcp.syncache.cachelimit: 15375
net.inet.tcp.syncache.count: 0
net.inet.tcp.syncache.hashsize: 512
net.inet.tcp.syncache.rexmtlimit: 3
net.inet.tcp.syncache.rst_on_sock_fail: 1
net.inet.tcp.msl: 30000
net.inet.tcp.rexmit_min: 30
net.inet.tcp.rexmit_slop: 200
net.inet.tcp.always_keeplive: 1
net.inet.tcp.fast_finwait2_recycle: 0
net.inet.tcp.finwait2_timeout: 60000
net.inet.tcp.keept: 8
net.inet.tcp.rexmit_drop_options: 0
net.inet.tcp.per_cpu_timers: 0
net.inet.tcp.timer_race: 0
net.inet.tcp.maxtcpw: 12600
net.inet.tcp.nolocaltimewait: 0
net.inet.udp.checksum: 1
net.inet.udp.maxdgram: 9216
net.inet.udp.recvspace: 42080
net.inet.udp.log_in_vain: 0
net.inet.udp.blackhole: 0
net.inet.sctp.sendspace: 1864135
net.inet.sctp.recvspace: 1864135
net.inet.sctp.auto_asconf: 1
net.inet.sctp.ecn_enable: 1
net.inet.sctp.strict_sacks: 1
net.inet.sctp.peer_chkoh: 256
net.inet.sctp.maxburst: 4
net.inet.sctp.fr_maxburst: 4
net.inet.sctp.maxchunks: 15341
net.inet.sctp.tcbhashsize: 1024
net.inet.sctp.pcbhashsize: 256
net.inet.sctp.min_split_point: 2904
net.inet.sctp.chunkscale: 10
net.inet.sctp.delayed_sack_time: 200
net.inet.sctp.sack_freq: 2
net.inet.sctp.sys_resource: 1000
net.inet.sctp.asoc_resource: 10
net.inet.sctp.heartbeat_interval: 30000
net.inet.sctp.pmtu_raise_time: 600
net.inet.sctp.shutdown_guard_time: 180
net.inet.sctp.secret_lifetime: 3600
net.inet.sctp.rto_max: 60000
net.inet.sctp.rto_min: 1000
net.inet.sctp.rto_initial: 3000
net.inet.sctp.init_rto_max: 60000
net.inet.sctp.valid_cookie_life: 60000
net.inet.sctp.init_rtx_max: 8
net.inet.sctp.assoc_rtx_max: 10
net.inet.sctp.path_rtx_max: 5
net.inet.sctp.path_pf_threshold: 65535
net.inet.sctp.add_more_on_output: 1452
net.inet.sctp.incoming_streams: 2048
net.inet.sctp.outgoing_streams: 10
net.inet.sctp.cmt_on_off: 0
net.inet.sctp.nr_sack_on_off: 0
net.inet.sctp.cmt_use_dac: 0
net.inet.sctp.cwnd_maxburst: 1
net.inet.sctp.asconf_auth_nochk: 0
net.inet.sctp.auth_disable: 0
net.inet.sctp.nat_friendly: 1
net.inet.sctp.abc_l_var: 2
net.inet.sctp.max_chained_mbufs: 5
net.inet.sctp.do_sctp_drain: 1
net.inet.sctp.hb_max_burst: 4
net.inet.sctp.abort_at_llimit: 0
net.inet.sctp.strict_data_order: 0
net.inet.sctp.min_residual: 1452
net.inet.sctp.max_retran_chunk: 30
net.inet.sctp.log_level: 0
net.inet.sctp.default_cc_module: 0
net.inet.sctp.default_ss_module: 0
net.inet.sctp.default_frag_interleave: 1
net.inet.sctp.mobility_base: 0
net.inet.sctp.mobility_fasthandoff: 0
net.inet.sctp.udp_tunneling_port: 0
net.inet.sctp.enable_sack_immediately: 0
net.inet.sctp.nat_friendly_init: 0
net.inet.sctp.vtag_time_wait: 60
net.inet.sctp.buffer_splitting: 0
net.inet.sctp.initial_cwnd: 3
net.inet.sctp.rttvar_bw: 4
net.inet.sctp.rttvar_rtt: 5
net.inet.sctp.rttvar_eqret: 0
net.inet.sctp.rttvar_steady_step: 20
```

```
net.inet.sctp.use_dcccecn: 1
net.inet.sctp.blackhole: 0
net.inet.raw.maxdgram: 9216
net.inet.raw.recvspace: 9216
net.inet.accf.unloadable: 0
net.link.generic.system.ifcount: 3
net.link.ether.inet.max_age: 1200
net.link.ether.inet.maxtries: 5
net.link.ether.inet.useloopback: 1
net.link.ether.inet.proxyall: 0
net.link.ether.inet.wait: 20
net.link.ether.inet.maxhold: 1
net.link.ether.inet.log_arp_wrong_iface: 1
net.link.ether.inet.log_arp_movements: 1
net.link.ether.inet.log_arp_permanent_modify: 1
net.link.ether.inet.allow_multicast: 0
net.link.ether.inet.max_log_per_second: 1
net.link.vlan.soft_pad: 0
net.link.gif.max_nesting: 1
net.link.gif.parallel_tunnels: 0
net.link.ifqmaxlen: 50
net.link.log_link_state_change: 1
net.link.tun.devfs_cloning: 1
net.inet6.ip6.forwarding: 0
net.inet6.ip6.redirect: 1
net.inet6.ip6.hlim: 64
net.inet6.ip6.maxfragpackets: 30683
net.inet6.ip6.accept_rtadv: 0
net.inet6.ip6.keepfaith: 0
net.inet6.ip6.log_interval: 5
net.inet6.ip6.hdrnestlimit: 15
net.inet6.ip6.dad_count: 1
net.inet6.ip6.auto_flowlabel: 1
net.inet6.ip6.defmcasthlim: 1
net.inet6.ip6.gifhlim: 30
net.inet6.ip6.kame_version: FreeBSD
net.inet6.ip6.use_deprecated: 1
net.inet6.ip6.rr_prune: 5
net.inet6.ip6.v6only: 1
net.inet6.ip6.rtmaxcache: 128
net.inet6.ip6.use_tempaddr: 0
net.inet6.ip6.templtime: 86400
net.inet6.ip6.templtime: 604800
net.inet6.ip6.auto_linklocal: 1
net.inet6.ip6.prefer_tempaddr: 0
net.inet6.ip6.use_defaultzone: 0
net.inet6.ip6.maxfrags: 30683
net.inet6.ip6.mcast_pmtu: 0
net.inet6.ip6.no_radr: 0
net.inet6.ip6.norbit_raif: 0
net.inet6.ip6.rfc6204w3: 0
net.inet6.ip6.mcast.maxgrpsrc: 512
net.inet6.ip6.mcast.maxsocksrc: 128
net.inet6.ip6.mcast.loop: 1
net.inet6.ip6.deembed_scopeid: 1
net.inet6.icmp6.rediraccept: 1
net.inet6.icmp6.redirtimeout: 600
net.inet6.icmp6.nd6_prune: 1
net.inet6.icmp6.nd6_delay: 5
net.inet6.icmp6.nd6_umaxtries: 3
net.inet6.icmp6.nd6_mmaxtries: 3
net.inet6.icmp6.nd6_useloopback: 1
net.inet6.icmp6.nodeinfo: 3
net.inet6.icmp6.errppslimit: 100
net.inet6.icmp6.nd6_maxnudhint: 0
net.inet6.icmp6.nd6_debug: 0
net.inet6.icmp6.nd6_maxqueuelen: 1
net.inet6.icmp6.nodeinfo_oldmcprefix: 1
net.inet6.icmp6.nd6_onlink_ns_rfc4861: 0
net.inet6.mld.gsrdelay: 10
net.inet6.mld.vlenable: 1
net.inet6.mld.use_allow: 1
net.bpf.maxinsns: 512
net.bpf.zerocopy_enable: 0
net.bpf.optimize_writers: 0
net.bpf.bufsize: 4096
net.bpf.maxbufsize: 524288
net.ifdescr_maxlen: 1024
net.isr.dispatch: direct
net.isr.maxthreads: 1
net.isr.bindthreads: 0
net.isr.maxqlimit: 10240
net.isr.defaultqlimit: 256
net.isr.maxprot: 16
net.isr.numthreads: 1
net.raw.sendspace: 8192
net.raw.recvspace: 8192
net.fibs: 1
net.add_addr_allfibs: 1
net.my_fibnum: 0
net.route.netisr_maxqlen: 256
```

```
net.wlan.nol_timeout: 1800
net.wlan.cac_timeout: 60
net.wlan.debug: 0
net.wlan.ampdu_age: 500
net.wlan.recv_bar: 1
net.wlan.addba_timeout: 250
net.wlan.addba_backoff: 10000
net.wlan.addba_maxtries: 3
net.wlan.hwmp.targetonly: 0
net.wlan.hwmp.pathlifetime: 5000
net.wlan.hwmp.maxreq_retries: 3
net.wlan.hwmp.net_diameter_traversal_time: 512
net.wlan.hwmp.roottimeout: 5000
net.wlan.hwmp.rootint: 2000
net.wlan.hwmp.rannint: 1000
net.wlan.hwmp.rootconfint: 2000
net.wlan.hwmp.inact: 5000
net.wlan.mesh.gateint: 10000
net.wlan.mesh.retrytimeout: 40
net.wlan.mesh.holdingtimeout: 40
net.wlan.mesh.confirmtimeout: 40
net.wlan.mesh.backofftimeout: 5000
net.wlan.mesh.maxretries: 2
net.wlan.mesh.maxholding: 2
debug.acpi.acpi_ca_version: 20130823
debug.acpi.enable_debug_objects: 0
debug.acpi.interpreter_slack: 1
debug.acpi.reset_clock: 1
debug.acpi.suspend_bounce: 0
debug.acpi.cpu_unordered: 0
debug.acpi.ec.burst: 0
debug.acpi.ec.poll: 0
debug.acpi.ec.timeout: 750
debug.acpi.batt.batt_sleep_ms: 0
debug.acpi.resume_beep: 0
debug.ipw: 0
debug.iwi: 0
debug.mddebug: 0
debug.wpi: 0
debug.elf64_legacy_core_dump: 0
debug.elf32_legacy_core_dump: 0
debug.boot_howto: 0
debug.boot_verbose: 0
debug.cpubus_lowest: 0
debug.cpubus_verbose: 0
debug.fail_point.sysctl_running: off
debug.fail_point.buf_pressure: off
debug.fail_point.nlm_deny_grant: off
debug.sizeof.cdev: 288
debug.sizeof.cdev_priv: 376
debug.sizeof.g_class: 176
debug.sizeof.g_geom: 176
debug.sizeof.g_provider: 136
debug.sizeof.g_consumer: 96
debug.sizeof.g_bioq: 56
debug.sizeof.vnode: 472
debug.sizeof.proc: 1208
debug.sizeof.bio: 248
debug.sizeof.buf: 600
debug.sizeof.kinfo_proc: 1088
debug.sizeof.devstat: 288
debug.sizeof.namecache: 72
debug.adaptive_machine_arch: 1
debug.osd: 0
debug.rwlock.retry: 10
debug.rwlock.loops: 10000
debug.debugger_on_panic: 1
debug.trace_on_panic: 1
debug.ncores: 5
debug.sx.retries: 10
debug.sx.loops: 10000
debug.umtx.umtx_pi_allocated: 0
debug.clocktime: 0
debug.kdb.current:
debug.kdb.enter: 0
debug.kdb.panic: 0
debug.kdb.trap: 0
debug.kdb.trap_code: 0
debug.kdb.break_to_debugger: 0
debug.kdb.alt_break_to_debugger: 0
debug.rman_debug: 0
debug.iosize_max_clamp: 1
debug.devfs_iosize_max_clamp: 1
debug.nchash: 131071
debug.numneg: 41
debug.numcache: 939
debug.numcachehv: 99
debug.vfscache: 1
debug.disablecwd: 0
debug.disablefullpath: 0
debug.rush_requests: 0
```



debug.vnlru\_nowhere: 0  
debug.vn\_io\_fault\_enable: 1  
debug.vn\_io\_faults: 546  
debug.if\_tun\_debug: 0  
debug.nlm\_debug: 0  
debug.fsckcmds: 0  
debug.dopersistence: 0  
debug.snapdebug: 0  
debug.collectsnapstats: 0  
debug.softdep.total.pagedep: 84  
debug.softdep.total.inodedep: 533  
debug.softdep.total.bmsafemap: 499  
debug.softdep.total.newblk: 1106  
debug.softdep.total.allocdirect: 922  
debug.softdep.total.indirdep: 2  
debug.softdep.total.allocindir: 184  
debug.softdep.total.freefrag: 4  
debug.softdep.total.freeblks: 386  
debug.softdep.total.freefile: 35  
debug.softdep.total.diradd: 520  
debug.softdep.total.mkdir: 110  
debug.softdep.total.dirrem: 62  
debug.softdep.total.newdirblk: 55  
debug.softdep.total.freework: 386  
debug.softdep.total.freedep: 0  
debug.softdep.total.jaddref: 630  
debug.softdep.total.jremref: 74  
debug.softdep.total.jmhref: 0  
debug.softdep.total.jnewblk: 1106  
debug.softdep.total.jfreeblk: 0  
debug.softdep.total.jfreefrag: 4  
debug.softdep.total.jseg: 25  
debug.softdep.total.jsegdep: 1814  
debug.softdep.total.sbdep: 17  
debug.softdep.total.jtrunc: 0  
debug.softdep.total.jfsync: 0  
debug.softdep.highuse.pagedep: 44  
debug.softdep.highuse.inodedep: 397  
debug.softdep.highuse.bmsafemap: 5  
debug.softdep.highuse.newblk: 1  
debug.softdep.highuse.allocdirect: 462  
debug.softdep.highuse.indirdep: 2  
debug.softdep.highuse.allocindir: 184  
debug.softdep.highuse.freefrag: 2  
debug.softdep.highuse.freeblks: 4  
debug.softdep.highuse.freefile: 3  
debug.softdep.highuse.diradd: 394  
debug.softdep.highuse.mkdir: 82  
debug.softdep.highuse.dirrem: 4  
debug.softdep.highuse.newdirblk: 41  
debug.softdep.highuse.freework: 4  
debug.softdep.highuse.freedep: 0  
debug.softdep.highuse.jaddref: 278  
debug.softdep.highuse.jremref: 4  
debug.softdep.highuse.jmhref: 0  
debug.softdep.highuse.jnewblk: 487  
debug.softdep.highuse.jfreeblk: 0  
debug.softdep.highuse.jfreefrag: 1  
debug.softdep.highuse.jseg: 8  
debug.softdep.highuse.jsegdep: 1054  
debug.softdep.highuse.sbdep: 1  
debug.softdep.highuse.jtrunc: 0  
debug.softdep.highuse.jfsync: 0  
debug.softdep.current.pagedep: 44  
debug.softdep.current.inodedep: 397  
debug.softdep.current.bmsafemap: 3  
debug.softdep.current.newblk: 0  
debug.softdep.current.allocdirect: 461  
debug.softdep.current.indirdep: 2  
debug.softdep.current.allocindir: 184  
debug.softdep.current.freefrag: 2  
debug.softdep.current.freeblks: 0  
debug.softdep.current.freefile: 0  
debug.softdep.current.diradd: 394  
debug.softdep.current.mkdir: 82  
debug.softdep.current.dirrem: 0  
debug.softdep.current.newdirblk: 41  
debug.softdep.current.freework: 0  
debug.softdep.current.freedep: 0  
debug.softdep.current.jaddref: 1  
debug.softdep.current.jremref: 0  
debug.softdep.current.jmhref: 0  
debug.softdep.current.jnewblk: 4  
debug.softdep.current.jfreeblk: 0  
debug.softdep.current.jfreefrag: 0  
debug.softdep.current.jseg: 3  
debug.softdep.current.jsegdep: 1041  
debug.softdep.current.sbdep: 0  
debug.softdep.current.jtrunc: 0  
debug.softdep.current.jfsync: 0  
debug.softdep.write.pagedep: 39

debug.softdep.write.inodedep: 201  
debug.softdep.write.bmsafemap: 21  
debug.softdep.write.newblk: 0  
debug.softdep.write.allocdirect: 98  
debug.softdep.write.indirdep: 0  
debug.softdep.write.allocindir: 180  
debug.softdep.write.freefrag: 0  
debug.softdep.write.freeblks: 3  
debug.softdep.write.freefile: 0  
debug.softdep.write.diradd: 0  
debug.softdep.write.mkdir: 0  
debug.softdep.write.dirrem: 0  
debug.softdep.write.newdirblk: 0  
debug.softdep.write.freework: 0  
debug.softdep.write.freedep: 0  
debug.softdep.write.jaddref: 0  
debug.softdep.write.jremref: 0  
debug.softdep.write.jmhref: 0  
debug.softdep.write.jnewblk: 0  
debug.softdep.write.jfreeblk: 0  
debug.softdep.write.jfreefrag: 0  
debug.softdep.write.jseg: 25  
debug.softdep.write.jsegdep: 3  
debug.softdep.write.sbdep: 17  
debug.softdep.write.jtrunc: 0  
debug.softdep.write.jfsync: 0  
debug.softdep.max\_softdeps: 447100  
debug.softdep.tickdelay: 2  
debug.softdep.maxindirdeps: 50  
debug.softdep.softdep\_mounts: 1  
debug.softdep.worklist\_push: 0  
debug.softdep.blk\_limit\_push: 0  
debug.softdep.ino\_limit\_push: 0  
debug.softdep.blk\_limit\_hit: 0  
debug.softdep.ino\_limit\_hit: 0  
debug.softdep.sync\_limit\_hit: 0  
debug.softdep.indir\_blk\_ptrs: 0  
debug.softdep.inode\_bitmap: 10  
debug.softdep.direct\_blk\_ptrs: 5  
debug.softdep.dir\_entry: 5  
debug.softdep.jaddref\_rollback: 0  
debug.softdep.jnewblk\_rollback: 0  
debug.softdep.journal\_low: 0  
debug.softdep.journal\_min: 0  
debug.softdep.journal\_wait: 2  
debug.softdep.jwait\_filepage: 0  
debug.softdep.jwait\_freeblks: 0  
debug.softdep.jwait\_inode: 2  
debug.softdep.jwait\_newblk: 0  
debug.softdep.cleanup\_blkrequests: 0  
debug.softdep.cleanup\_inorequests: 0  
debug.softdep.cleanup\_high\_delay: 0  
debug.softdep.cleanup\_retries: 0  
debug.softdep.cleanup\_failures: 0  
debug.softdep.flushcache: 0  
debug.bigcgs: 0  
debug.dobkgrdwrite: 1  
debug.dircheck: 0  
debug.psm.loglevel: 0  
debug.psm.hz: 20  
debug.psm.errsecs: 2  
debug.psm.errusecs: 0  
debug.psm.secs: 0  
debug.psm.usecs: 500000  
debug.psm.pkterrthresh: 2  
debug.vesa.shadow\_rom: 0  
debug.fdc.fifo: 8  
debug.fdc.debugflags: 0  
debug.fdc.retries: 10  
debug.fdc.spec1: 175  
debug.fdc.spec2: 16  
debug.fdc.settle: 0  
debug.x86bios.call: 0  
debug.x86bios.int: 0  
debug.hwpstate\_verbose: 0  
debug.minidump: 1  
hw.machine: amd64  
hw.model: Intel(R) Xeon(R) CPU E3-1220 v3 @ 3.10GHz  
hw.ncpu: 4  
hw.byteorder: 1234  
hw.physmem: 2064375808  
hw.usermem: 1968005120  
hw.pagesize: 4096  
hw.floatingpoint: 1  
hw.machine\_arch: amd64  
hw.realmem: 2147483648  
hw.aac.enable\_msi: 1  
hw.amr.force\_sg32: 0  
hw.an.an\_dump: off  
hw.an.an\_cache\_mode: dbm  
hw.an.an\_cache\_mcastonly: 0

hw.an.an\_cache\_iponly: 1  
hw.ata.ata\_dma\_check\_80pin: 1  
hw.ath.longcal: 30  
hw.ath.shortcal: 100  
hw.ath.resetcal: 1200  
hw.ath.anical: 100  
hw.ath.rxbuf: 512  
hw.ath.txbuf: 512  
hw.ath.txbuf\_mgmt: 32  
hw.ath.bstuck: 4  
hw.bce.verbose: 1  
hw.bce.tso\_enable: 1  
hw.bce.msi\_enable: 1  
hw.bce.rx\_pages: 2  
hw.bce.tx\_pages: 2  
hw.bce.hdr\_split: 1  
hw.bce.strict\_rx\_mtu: 0  
hw.bce.tx\_quick\_cons\_trip\_int: 20  
hw.bce.tx\_quick\_cons\_trip: 20  
hw.bce.tx\_ticks\_int: 80  
hw.bce.tx\_ticks: 80  
hw.bce.rx\_quick\_cons\_trip\_int: 6  
hw.bce.rx\_quick\_cons\_trip: 6  
hw.bce.rx\_ticks\_int: 18  
hw.bce.rx\_ticks: 18  
hw.bge.allow\_asf: 1  
hw.cardbus.debug: 0  
hw.cardbus.cis\_debug: 0  
hw.cs.ignore\_checksum\_failure: 0  
hw.cs.recv\_delay: 570  
hw.em.tx\_int\_delay: 66  
hw.em.rx\_int\_delay: 0  
hw.em.tx\_abs\_int\_delay: 66  
hw.em.rx\_abs\_int\_delay: 66  
hw.em.rxd: 1024  
hw.em.txd: 1024  
hw.em.smart\_pwr\_down: 0  
hw.em.sbp: 0  
hw.em.enable\_msix: 1  
hw.em.rx\_process\_limit: 100  
hw.em.eee\_setting: 1  
hw.igb.rxd: 1024  
hw.igb.txd: 1024  
hw.igb.enable\_aim: 1  
hw.igb.enable\_msix: 1  
hw.igb.max\_interrupt\_rate: 8000  
hw.igb.buf\_ring\_size: 4096  
hw.igb.header\_split: 0  
hw.igb.num\_queues: 0  
hw.igb.rx\_process\_limit: 100  
hw.ix.enable\_aim: 1  
hw.ix.max\_interrupt\_rate: 31250  
hw.ix.rx\_process\_limit: 256  
hw.ix.tx\_process\_limit: 256  
hw.ix.enable\_msix: 1  
hw.ix.num\_queues: 0  
hw.ix.txd: 2048  
hw.ix.rxd: 2048  
hw.malo.tx\_coalesce: 8  
hw.malo.rxbuf: 256  
hw.malo.rxquota: 256  
hw.malo.txbuf: 256  
hw.malo.pci.msi\_disable: 0  
hw.mfi.event\_locale: 65535  
hw.mfi.event\_class: 0  
hw.mfi.max\_cmds: 128  
hw.mfi.detect\_jbod\_change: 1  
hw.mfi.pollled\_cmd\_timeout: 60  
hw.mfi.cmd\_timeout: 30  
hw.mfi.msi: 1  
hw.mmc.debug: 0  
hw.mwl.rxdesc: 256  
hw.mwl.rxbuf: 640  
hw.mwl.txbuf: 256  
hw.mwl.tx\_coalesce: 8  
hw.mwl.rxquota: 640  
hw.mwl.rxdma\_low: 3  
hw.pccard.debug: 0  
hw.pccard.cis\_debug: 0  
hw.cbb.start\_memory: 2281701376  
hw.cbb.start\_16\_io: 256  
hw.cbb.start\_32\_io: 4096  
hw.cbb.debug: 0  
hw.pci.intr\_mask: 57016  
hw.pci.pd6722\_vsense: 1  
hw.pci.enable\_io\_modes: 1  
hw.pci.reallocBars: 0  
hw.pci.do\_power\_nodriver: 0  
hw.pci.do\_power\_resume: 1  
hw.pci.do\_power\_suspend: 1  
hw.pci.enable\_msi: 1

hw.pci.enable\_msix: 1  
hw.pci.honor\_msi\_blacklist: 1  
hw.pci.usb\_early\_takeover: 1  
hw.pci.clearBars: 0  
hw.pci.clear\_pcie: 0  
hw.pci.default\_vgapci\_unit: 0  
hw.pci.mcfg: 1  
hw.pci.host\_mem\_start: 2147483648  
hw.sdhci.debug: 0  
hw.sdhci\_pci.debug: 0  
hw.snd.report\_soft\_formats: 1  
hw.snd.report\_soft\_matrix: 1  
hw.snd.latency: 5  
hw.snd.latency\_profile: 1  
hw.snd.vpc\_autoreset: 1  
hw.snd.vpc\_0db: 45  
hw.snd.vpc\_reset: 0  
hw.snd.compat\_linux\_mmap: 0  
hw.snd.feeder\_eq\_presets: PEQ:16000,0.2500,62,0.2500:-9,9,1.0:44100,48000,88200,96000,176400,192000  
hw.snd.feeder\_eq\_exact\_rate: 0  
hw.snd.feeder\_rate\_presets: 100:8:0.85 100:36:0.92 100:164:0.97  
hw.snd.feeder\_rate\_polyphase\_max: 183040  
hw.snd.feeder\_rate\_min: 1  
hw.snd.feeder\_rate\_max: 2016000  
hw.snd.feeder\_rate\_round: 25  
hw.snd.feeder\_rate\_quality: 1  
hw.snd.vpc\_mixer\_bypass: 1  
hw.snd.verbose: 0  
hw.snd.default\_auto: -1  
hw.snd.version: 2009061500/amd64  
hw.snd.default\_unit: -1  
hw.snd.maxautovchans: 16  
hw.midi.stat.verbose: 0  
hw.midi.debug: 0  
hw.midi.dumpraw: 0  
hw.midi.instrhoff: 0  
hw.midi.seq.debug: 0  
hw.syscons.saver.keybonly: 1  
hw.syscons.bell: 1  
hw.syscons.kbd\_reboot: 1  
hw.syscons.kbd\_debug: 1  
hw.syscons.sc\_no\_suspend\_vtswitch: 0  
hw.broken\_txfifo: 0  
hw.usb.ehci.debug: 0  
hw.usb.ehci.no\_hs: 0  
hw.usb.ehci.iaadbug: 0  
hw.usb.ehci.lostintrbug: 0  
hw.usb.ohci.debug: 0  
hw.usb.uhci.debug: 0  
hw.usb.uhci.loop: 0  
hw.usb.xhci.streams: 0  
hw.usb.xhci.debug: 0  
hw.usb.xhci.xhci\_port\_route: 0  
hw.usb.xhci.use\_polling: 0  
hw.usb.ctrl.debug: 0  
hw.usb.no\_boot\_wait: 0  
hw.usb.no\_suspend\_wait: 0  
hw.usb.no\_shutdown\_wait: 0  
hw.usb.umass.debug: 0  
hw.usb.umass.throttle: 0  
hw.usb.debug: 0  
hw.usb.timings.port\_reset\_delay: 50  
hw.usb.timings.port\_root\_reset\_delay: 250  
hw.usb.timings.port\_reset\_recovery: 250  
hw.usb.timings.port\_powerup\_delay: 300  
hw.usb.timings.port\_resume\_delay: 40  
hw.usb.timings.set\_address\_settle: 10  
hw.usb.timings.resume\_delay: 250  
hw.usb.timings.resume\_wait: 50  
hw.usb.timings.resume\_recovery: 50  
hw.usb.timings.extra\_power\_up\_time: 20  
hw.usb.dev.debug: 0  
hw.usb.template: 0  
hw.usb.usb\_lang\_id: 9  
hw.usb.usb\_lang\_mask: 255  
hw.usb.ugen.debug: 0  
hw.usb.uhub.debug: 0  
hw.usb.power\_timeout: 30  
hw.usb.proc.debug: 0  
hw.usb.no\_cs\_fail: 0  
hw.usb.full\_ddesc: 0  
hw.usb.ukbd.debug: 0  
hw.usb.ukbd.no\_leds: 0  
hw.usb.ukbd.pollrate: 0  
hw.usb.ums.debug: 0  
hw.watchdog.wd\_last\_u: 0  
hw.watchdog.wd\_last\_u\_secs: 0  
hw.wi.txerate: 0  
hw.wi.debug: 0  
hw.xe.debug: 0  
hw.intr\_storm\_threshold: 1000

hw.availpages: 503998  
hw.pagesizes: 4096 2097152 0  
hw.bus.devctl\_disable: 0  
hw.bus.devctl\_queue: 1000  
hw.clockrate: 3092  
hw.instruction\_sse: 1  
hw.via\_feature\_rng: 0  
hw.via\_feature\_xcrypt: 0  
hw.psm.tap\_enabled: -1  
hw.psm.tap\_threshold: 25  
hw.psm.tap\_timeout: 125000  
hw.bxe.debug: 0  
hw.bxe.interrupt\_mode: 2  
hw.bxe.queue\_count: 4  
hw.bxe.max\_rx\_bufs: 0  
hw.bxe.hc\_rx\_ticks: 25  
hw.bxe.hc\_tx\_ticks: 50  
hw.bxe.rx\_budget: -1  
hw.bxe.max\_aggregation\_size: 0  
hw.bxe.mrrs: -1  
hw.bxe.autogreen: 0  
hw.bxe.udp\_rss: 0  
hw.kbd.keymap\_restrict\_change: 0  
hw.dmar.tbl\_pagecnt: 0  
hw.dmar.match\_verbose: 0  
hw.bsdma.total\_bpages: 8197  
hw.bsdma.zone0.total\_bpages: 8197  
hw.bsdma.zone0.free\_bpages: 8197  
hw.bsdma.zone0.reserved\_bpages: 0  
hw.bsdma.zone0.active\_bpages: 0  
hw.bsdma.zone0.total\_bounced: 0  
hw.bsdma.zone0.total\_deferred: 0  
hw.bsdma.zone0.lowaddr: 0xfffffffffffff  
hw.bsdma.zone0.alignment: 4096  
hw.apic.enable\_extint: 0  
hw.mca.enabled: 1  
hw.mca.amd10h\_L1TP: 1  
hw.mca.erratum383: 0  
hw.mca.count: 0  
hw.mca.interval: 3600  
hw.mca.force\_scan: 0  
hw.mca.cmc\_throttle: 60  
hw.acpi.supported\_sleep\_state: S4 S5  
hw.acpi.power\_button\_state: S5  
hw.acpi.sleep\_button\_state: S4  
hw.acpi.lid\_switch\_state: NONE  
hw.acpi.standby\_state: NONE  
hw.acpi.suspend\_state: NONE  
hw.acpi.sleep\_delay: 1  
hw.acpi.s4bios: 0  
hw.acpi.verbose: 0  
hw.acpi.disable\_on\_reboot: 0  
hw.acpi.handle\_reboot: 1  
hw.acpi.reset\_video: 0  
hw.acpi.cpu.cx\_lowest: C1  
machdep.acpi\_timer\_freq: 3579545  
machdep.enable\_panic\_key: 0  
machdep.rtc\_save\_period: 1800  
machdep.adjkerntz: -32400  
machdep.wall\_cmos\_clock: 1  
machdep.disable\_rtc\_set: 0  
machdep.disable\_mtrrs: 0  
machdep.idle\_mwait: 1  
machdep.idle\_available: spin, mwait, hlt, acpi  
machdep.idle: acpi  
machdep.nkpt: 22  
machdep.max\_ldt\_segment: 1024  
machdep.kdb\_on\_nmi: 1  
machdep.panic\_on\_nmi: 1  
machdep.prot\_fault\_translation: 0  
machdep.uprintf\_signal: 0  
machdep.acpi\_root: 984208  
machdep.i8254\_freq: 1193182  
machdep.disable\_tsc: 0  
machdep.disable\_tsc\_calibration: 0  
machdep.tsc\_freq: 3092901084  
user.cs\_path:  
user.bc\_base\_max: 0  
user.bc\_dim\_max: 0  
user.bc\_scale\_max: 0  
user.bc\_string\_max: 0  
user.coll\_weights\_max: 0  
user.expr\_nest\_max: 0  
user.line\_max: 0  
user.re\_dup\_max: 0  
user.posix2\_version: 0  
user.posix2\_c\_bind: 0  
user.posix2\_c\_dev: 0  
user.posix2\_char\_term: 0  
user.posix2\_fort\_dev: 0  
user.posix2\_fort\_run: 0

user.posix2\_localedef: 0  
user.posix2\_sw\_dev: 0  
user.posix2\_upe: 0  
user.stream\_max: 0  
user.tzname\_max: 0  
p1003\_1b.asynchronous\_io: 0  
p1003\_1b.mapped\_files: 200112  
p1003\_1b.memlock: 0  
p1003\_1b.memlock\_range: 0  
p1003\_1b.memory\_protection: 0  
p1003\_1b.message\_passing: 0  
p1003\_1b.prioritized\_io: 0  
p1003\_1b.priority\_scheduling: 200112  
p1003\_1b.realtime\_signals: 200112  
p1003\_1b.semaphores: 0  
p1003\_1b.fsync: 200112  
p1003\_1b.shared\_memory\_objects: 200112  
p1003\_1b.synchronized\_io: 0  
p1003\_1b.timers: 200112  
p1003\_1b.aio\_listio\_max: -1  
p1003\_1b.aio\_max: -1  
p1003\_1b.aio\_prio\_delta\_max: -1  
p1003\_1b.delaytimer\_max: 2147483647  
p1003\_1b.mq\_open\_max: 0  
p1003\_1b.pagesize: 4096  
p1003\_1b.rtsig\_max: 62  
p1003\_1b.sem\_nsems\_max: 0  
p1003\_1b.sem\_value\_max: 0  
p1003\_1b.sigqueue\_max: 128  
p1003\_1b.timer\_max: 32  
compat.ia32.maxdsiz: 536870912  
compat.ia32.maxssiz: 67108864  
compat.ia32.maxvmem: 0  
security.jail.jailed: 0  
security.jail.vnet: 0  
security.jail.jail\_max\_af\_ips: 255  
security.jail.set\_hostname\_allowed: 1  
security.jail.socket\_unixiproute\_only: 1  
security.jail.sysvipc\_allowed: 0  
security.jail.allow\_raw\_sockets: 0  
security.jail.chflags\_allowed: 0  
security.jail.mount\_allowed: 0  
security.jail.mount\_devfs\_allowed: 0  
security.jail.mount\_nullfs\_allowed: 0  
security.jail.mount\_procfs\_allowed: 0  
security.jail.mount\_tmpfs\_allowed: 0  
security.jail.mount\_zfs\_allowed: 0  
security.jail.enforce\_statfs: 2  
security.jail.devfs\_ruleset: 0  
security.jail.param.jid: 0  
security.jail.param.parent: 0  
security.jail.param.name: 256  
security.jail.param.path: 1024  
security.jail.param.securelevel: 0  
security.jail.param.enforce\_statfs: 0  
security.jail.param.devfs\_ruleset: 0  
security.jail.param.persist: 0  
security.jail.param.dying: 0  
security.jail.param.children.cur: 0  
security.jail.param.children.max: 0  
security.jail.param.host.: 0  
security.jail.param.host.hostname: 256  
security.jail.param.host.domainname: 256  
security.jail.param.host.hostuid: 64  
security.jail.param.host.hostid: 0  
security.jail.param.cpu.set.id: 0  
security.jail.param.ip4.: 0  
security.jail.param.ip4.saddrsel: 0  
security.jail.param.ip6.: 0  
security.jail.param.ip6.saddrsel: 0  
security.jail.param.allow.set\_hostname: 0  
security.jail.param.allow.sysvipc: 0  
security.jail.param.allow.raw\_sockets: 0  
security.jail.param.allow.chflags: 0  
security.jail.param.allow.quotas: 0  
security.jail.param.allow.socket\_af: 0  
security.jail.param.allow.mount.: 0  
security.jail.param.allow.mount.devfs: 0  
security.jail.param.allow.mount.nullfs: 0  
security.jail.param.allow.mount.procfs: 0  
security.jail.param.allow.mount.tmpfs: 0  
security.jail.param.allow.mount.zfs: 0  
security.bsd.map\_at\_zero: 0  
security.bsd.suser\_enabled: 1  
security.bsd.unprivileged\_mlock: 1  
security.bsd.see\_other\_uids: 1  
security.bsd.see\_other\_gids: 1  
security.bsd.conservative\_signals: 1  
security.bsd.unprivileged\_proc\_debug: 1  
security.bsd.unprivileged\_idprio: 0  
security.bsd.unprivileged\_read\_msgbuf: 1

```

security.bsd.hardlink_check_uid: 0
security.bsd.hardlink_check_gid: 0
security.bsd.unprivileged_get_quota: 0
security.bsd.stack_guard_page: 0
security.mac.version: 4
security.mac.max_slots: 4
security.mac.labeled: 0
security.mac.mmap_revocation: 1
security.mac.mmap_revocation_via_cow: 0
dev.xen.balloon.current: 0
dev.xen.balloon.target: 0
dev.xen.balloon.driver_pages: 0
dev.xen.balloon.hard_limit: 0
dev.xen.balloon.low_mem: 0
dev.xen.balloon.high_mem: 0
dev.xen.xsd_port: 0
dev.xen.xsd_kva: 0
dev.nexus.0.%driver: nexus
dev.nexus.0.%parent: root0
dev.ram.0.%desc: System RAM
dev.ram.0.%driver: ram
dev.ram.0.%parent: nexus0
dev.acpi.0.%desc: AMI 0627
dev.acpi.0.%driver: acpi
dev.acpi.0.%parent: nexus0
dev.acpi_sysresource.0.%desc: System Resource
dev.acpi_sysresource.0.%driver: acpi_sysresource
dev.acpi_sysresource.0.%location: handle=\_SB_.PCI0.TPMX
dev.acpi_sysresource.0.%pnpinf: _HID=PNP0C01 _UID=1
dev.acpi_sysresource.0.%parent: acpi0
dev.acpi_sysresource.1.%desc: System Resource
dev.acpi_sysresource.1.%driver: acpi_sysresource
dev.acpi_sysresource.1.%location: handle=\_SB_.PCI0.LPCB.LDRC
dev.acpi_sysresource.1.%pnpinf: _HID=PNP0C02 _UID=2
dev.acpi_sysresource.1.%parent: acpi0
dev.acpi_sysresource.2.%desc: System Resource
dev.acpi_sysresource.2.%driver: acpi_sysresource
dev.acpi_sysresource.2.%location: handle=\_SB_.PCI0.LPCB.CWDT
dev.acpi_sysresource.2.%pnpinf: _HID=INT3F0D _UID=0
dev.acpi_sysresource.2.%parent: acpi0
dev.acpi_sysresource.3.%desc: System Resource
dev.acpi_sysresource.3.%driver: acpi_sysresource
dev.acpi_sysresource.3.%location: handle=\_SB_.PCI0.LPCB.SIO1
dev.acpi_sysresource.3.%pnpinf: _HID=PNP0C02 _UID=78
dev.acpi_sysresource.3.%parent: acpi0
dev.acpi_sysresource.4.%desc: System Resource
dev.acpi_sysresource.4.%driver: acpi_sysresource
dev.acpi_sysresource.4.%location: handle=\_SB_.PCI0.LPCB.RMCS
dev.acpi_sysresource.4.%pnpinf: _HID=PNP0C02 _UID=16
dev.acpi_sysresource.4.%parent: acpi0
dev.acpi_sysresource.5.%desc: System Resource
dev.acpi_sysresource.5.%driver: acpi_sysresource
dev.acpi_sysresource.5.%location: handle=\_SB_.PCI0.LPCB.MBRD
dev.acpi_sysresource.5.%pnpinf: _HID=PNP0C02 _UID=31
dev.acpi_sysresource.5.%parent: acpi0
dev.acpi_sysresource.6.%desc: System Resource
dev.acpi_sysresource.6.%driver: acpi_sysresource
dev.acpi_sysresource.6.%location: handle=\_SB_.PCI0.RP05.PPF1
dev.acpi_sysresource.6.%pnpinf: _HID=PNP0C01 _UID=241
dev.acpi_sysresource.6.%parent: acpi0
dev.acpi_sysresource.7.%desc: System Resource
dev.acpi_sysresource.7.%driver: acpi_sysresource
dev.acpi_sysresource.7.%location: handle=\_SB_.PCI0.PDRC
dev.acpi_sysresource.7.%pnpinf: _HID=PNP0C02 _UID=1
dev.acpi_sysresource.7.%parent: acpi0
dev.cpu.0.%desc: ACPI CPU
dev.cpu.0.%driver: cpu
dev.cpu.0.%location: handle=\_PR_.CPU0
dev.cpu.0.%pnpinf: _HID=none _UID=0
dev.cpu.0.%parent: acpi0
dev.cpu.0.%freq: 1137
dev.cpu.0.%freq_levels: 3101/80000 3100/80000 2900/72713 2800/69558 2600/62669 2400/56794 2300/53935 2100/47673 1900/42370 1800/39795
1600/34136 1500/31729 1300/26432 1137/23128 1100/21994 1000/19851 875/17369 800/15113 700/13223 600/11334 500/9445 400/7556 300/5667
200/3778 100/1889
dev.cpu.0.%cx_supported: C1/1/1 C2/2/117
dev.cpu.0.%cx_lowest: C1
dev.cpu.0.%cx_usage: 100.00% 0.00% last 15017us
dev.cpu.1.%desc: ACPI CPU
dev.cpu.1.%driver: cpu
dev.cpu.1.%location: handle=\_PR_.CPU1
dev.cpu.1.%pnpinf: _HID=none _UID=0
dev.cpu.1.%parent: acpi0
dev.cpu.1.%cx_supported: C1/1/1 C2/2/117
dev.cpu.1.%cx_lowest: C1
dev.cpu.1.%cx_usage: 100.00% 0.00% last 23542us
dev.cpu.2.%desc: ACPI CPU
dev.cpu.2.%driver: cpu
dev.cpu.2.%location: handle=\_PR_.CPU2
dev.cpu.2.%pnpinf: _HID=none _UID=0
dev.cpu.2.%parent: acpi0
dev.cpu.2.%cx_supported: C1/1/1 C2/2/117

```

```

dev.cpu.2.cx_lowest: C1
dev.cpu.2.cx_usage: 100.00% 0.00% last 405us
dev.cpu.3.%desc: ACPI CPU
dev.cpu.3.%driver: cpu
dev.cpu.3.%location: handle=\_PR_.CPU3
dev.cpu.3.%pnpinfo: _HID=none _UID=0
dev.cpu.3.%parent: acpi0
dev.cpu.3.cx_supported: C1/1/1 C2/2/117
dev.cpu.3.cx_lowest: C1
dev.cpu.3.cx_usage: 100.00% 0.00% last 15503us
dev.hpet.0.%desc: High Precision Event Timer
dev.hpet.0.%driver: hpet
dev.hpet.0.%location: handle=\_SB_.PCI0.LPCB.HPET
dev.hpet.0.%pnpinfo: _HID=PNP0103 _UID=0
dev.hpet.0.%parent: acpi0
dev.atrtc.0.%desc: AT realtime clock
dev.atrtc.0.%driver: atrtc
dev.atrtc.0.%location: handle=\_SB_.PCI0.LPCB.RTC_
dev.atrtc.0.%pnpinfo: _HID=PNP0B00 _UID=0
dev.atrtc.0.%parent: acpi0
dev.attimer.0.%desc: AT timer
dev.attimer.0.%driver: attimer
dev.attimer.0.%location: handle=\_SB_.PCI0.LPCB.TIMR
dev.attimer.0.%pnpinfo: _HID=PNP0100 _UID=0
dev.attimer.0.%parent: acpi0
dev.acpi_timer.0.%desc: 24-bit timer at 3.579545MHz
dev.acpi_timer.0.%driver: acpi_timer
dev.acpi_timer.0.%location: unknown
dev.acpi_timer.0.%pnpinfo: unknown
dev.acpi_timer.0.%parent: acpi0
dev.pci_link.0.%desc: ACPI PCI Link LNKA
dev.pci_link.0.%driver: pci_link
dev.pci_link.0.%location: handle=\_SB_.LNKA
dev.pci_link.0.%pnpinfo: _HID=PNP0C0F _UID=1
dev.pci_link.0.%parent: acpi0
dev.pci_link.1.%desc: ACPI PCI Link LNKB
dev.pci_link.1.%driver: pci_link
dev.pci_link.1.%location: handle=\_SB_.LNKB
dev.pci_link.1.%pnpinfo: _HID=PNP0C0F _UID=2
dev.pci_link.1.%parent: acpi0
dev.pci_link.2.%desc: ACPI PCI Link LNKC
dev.pci_link.2.%driver: pci_link
dev.pci_link.2.%location: handle=\_SB_.LNKC
dev.pci_link.2.%pnpinfo: _HID=PNP0C0F _UID=3
dev.pci_link.2.%parent: acpi0
dev.pci_link.3.%desc: ACPI PCI Link LNKD
dev.pci_link.3.%driver: pci_link
dev.pci_link.3.%location: handle=\_SB_.LNKD
dev.pci_link.3.%pnpinfo: _HID=PNP0C0F _UID=4
dev.pci_link.3.%parent: acpi0
dev.pci_link.4.%desc: ACPI PCI Link LNKE
dev.pci_link.4.%driver: pci_link
dev.pci_link.4.%location: handle=\_SB_.LNKE
dev.pci_link.4.%pnpinfo: _HID=PNP0C0F _UID=5
dev.pci_link.4.%parent: acpi0
dev.pci_link.5.%desc: ACPI PCI Link LNKF
dev.pci_link.5.%driver: pci_link
dev.pci_link.5.%location: handle=\_SB_.LNKF
dev.pci_link.5.%pnpinfo: _HID=PNP0C0F _UID=6
dev.pci_link.5.%parent: acpi0
dev.pci_link.6.%desc: ACPI PCI Link LNKG
dev.pci_link.6.%driver: pci_link
dev.pci_link.6.%location: handle=\_SB_.LNKG
dev.pci_link.6.%pnpinfo: _HID=PNP0C0F _UID=7
dev.pci_link.6.%parent: acpi0
dev.pci_link.7.%desc: ACPI PCI Link LNKH
dev.pci_link.7.%driver: pci_link
dev.pci_link.7.%location: handle=\_SB_.LNKH
dev.pci_link.7.%pnpinfo: _HID=PNP0C0F _UID=8
dev.pci_link.7.%parent: acpi0
dev.pci.0.%desc: ACPI Host-PCI bridge
dev.pci.0.%driver: pci_b
dev.pci.0.%location: handle=\_SB_.PCI0
dev.pci.0.%pnpinfo: _HID=PNP0A08 _UID=0
dev.pci.0.%parent: acpi0
dev.pci.1.%desc: ACPI PCI-PCI bridge
dev.pci.1.%driver: pci_b
dev.pci.1.%location: slot=28 function=0 handle=\_SB_.PCI0.RP01
dev.pci.1.%pnpinfo: vendor=0x8086 device=0x8c10 subvendor=0x1bcf subdevice=0x8038 class=0x060400
dev.pci.1.%parent: pci0
dev.pci.1.domain: 0
dev.pci.1.pribus: 0
dev.pci.1.secbus: 33
dev.pci.1.subbus: 56
dev.pci.1.wake: 0
dev.pci.2.%desc: ACPI PCI-PCI bridge
dev.pci.2.%driver: pci_b
dev.pci.2.%location: slot=28 function=4 handle=\_SB_.PCI0.RP05
dev.pci.2.%pnpinfo: vendor=0x8086 device=0x8c18 subvendor=0x1bcf subdevice=0x8038 class=0x060400
dev.pci.2.%parent: pci0
dev.pci.2.domain: 0

```



```

dev.pci.2.pribus: 0
dev.pci.2.secbus: 57
dev.pci.2.subbus: 57
dev.pci.2.wake: 0
dev.pci.3.%desc: ACPI PCI-PCI bridge
dev.pci.3.%driver: pci
dev.pci.3.%location: slot=28 function=5 handle=\_SB_.PCI0.RP06
dev.pci.3.%pnpinfo: vendor=0x8086 device=0x8c1a subvendor=0x1bcf subdevice=0x8038 class=0x060400
dev.pci.3.%parent: pci0
dev.pci.3.domain: 0
dev.pci.3.pribus: 0
dev.pci.3.secbus: 58
dev.pci.3.subbus: 64
dev.pci.3.wake: 0
dev.pci.0.%desc: ACPI PCI bus
dev.pci.0.%driver: pci
dev.pci.0.%parent: pci0
dev.pci.33.%desc: ACPI PCI bus
dev.pci.33.%driver: pci
dev.pci.33.%parent: pci1
dev.pci.33.wake: 0
dev.pci.57.%desc: ACPI PCI bus
dev.pci.57.%driver: pci
dev.pci.57.%parent: pci2
dev.pci.57.wake: 0
dev.pci.58.%desc: ACPI PCI bus
dev.pci.58.%driver: pci
dev.pci.58.%parent: pci3
dev.pci.58.wake: 0
dev.hostb.0.%desc: Host to PCI bridge
dev.hostb.0.%driver: hostb
dev.hostb.0.%location: slot=0 function=0
dev.hostb.0.%pnpinfo: vendor=0x8086 device=0x0c08 subvendor=0x1bcf subdevice=0x8038 class=0x060000
dev.hostb.0.%parent: pci0
dev.xhci.0.%desc: Intel Lynx Point USB 3.0 controller
dev.xhci.0.%driver: xhci
dev.xhci.0.%location: slot=20 function=0 handle=\_SB_.PCI0.XHC_
dev.xhci.0.%pnpinfo: vendor=0x8086 device=0x8c31 subvendor=0x1bcf subdevice=0x8038 class=0x0c0330
dev.xhci.0.%parent: pci0
dev.xhci.0.wake: 0
dev.usbus.0.%driver: usb
dev.usbus.0.%parent: xhci0
dev.usbus.1.%driver: usb
dev.usbus.1.%parent: ehci0
dev.usbus.2.%driver: usb
dev.usbus.2.%parent: ehci1
dev.ehci.0.%desc: EHCI (generic) USB 2.0 controller
dev.ehci.0.%driver: ehci
dev.ehci.0.%location: slot=26 function=0 handle=\_SB_.PCI0.EHC2
dev.ehci.0.%pnpinfo: vendor=0x8086 device=0x8c2d subvendor=0x1bcf subdevice=0x8038 class=0x0c0320
dev.ehci.0.%parent: pci0
dev.ehci.0.wake: 0
dev.ehci.1.%desc: EHCI (generic) USB 2.0 controller
dev.ehci.1.%driver: ehci
dev.ehci.1.%location: slot=29 function=0 handle=\_SB_.PCI0.EHC1
dev.ehci.1.%pnpinfo: vendor=0x8086 device=0x8c26 subvendor=0x1bcf subdevice=0x8038 class=0x0c0320
dev.ehci.1.%parent: pci0
dev.ehci.1.wake: 0
dev.vgapci.0.%desc: VGA-compatible display
dev.vgapci.0.%driver: vgapci
dev.vgapci.0.%location: slot=0 function=0 handle=\_SB_.PCI0.RP05.PXSX
dev.vgapci.0.%pnpinfo: vendor=0x102b device=0x0522 subvendor=0x1bcf subdevice=0x8038 class=0x030000
dev.vgapci.0.%parent: pci57
dev.vgapci.0.wake: 0
dev.bge.0.%desc: Broadcom NetXtreme Gigabit Ethernet Controller, ASIC rev. 0x5717100
dev.bge.0.%driver: bge
dev.bge.0.%location: slot=0 function=0 handle=\_SB_.PCI0.RP06.LAN1
dev.bge.0.%pnpinfo: vendor=0x14e4 device=0x1656 subvendor=0x1bcf subdevice=0x8038 class=0x020000
dev.bge.0.%parent: pci58
dev.bge.0.forced_collapse: 0
dev.bge.0.msi: 1
dev.bge.0.forced_udpcsum: 0
dev.bge.0.stats.FramesDroppedDueToFilters: 0
dev.bge.0.stats.DmaWriteQueueFull: 0
dev.bge.0.stats.DmaWriteHighPriQueueFull: 0
dev.bge.0.stats.NoMoreRxBDs: 0
dev.bge.0.stats.InputDiscards: 0
dev.bge.0.stats.InputErrors: 0
dev.bge.0.stats.RecvThresholdHit: 0
dev.bge.0.stats.rx.ifHCInOctets: 90689
dev.bge.0.stats.rx.Fragments: 0
dev.bge.0.stats.rx.UnicastPkts: 159
dev.bge.0.stats.rx.MulticastPkts: 150
dev.bge.0.stats.rx.BroadcastPkts: 257
dev.bge.0.stats.rx.FCSerrors: 0
dev.bge.0.stats.rx.AlignmentErrors: 0
dev.bge.0.stats.rx.xonPauseFramesReceived: 0
dev.bge.0.stats.rx.xoffPauseFramesReceived: 0
dev.bge.0.stats.rx.ControlFramesReceived: 0
dev.bge.0.stats.rx.xoffStateEntered: 0
dev.bge.0.stats.rx.FramesTooLong: 0

```

```

dev.bge.0.stats.rx.Jabbers: 0
dev.bge.0.stats.rx.UndersizePkts: 0
dev.bge.0.stats.tx.ifHCOutOctets: 18611
dev.bge.0.stats.tx.Collisions: 0
dev.bge.0.stats.tx.XonSent: 0
dev.bge.0.stats.tx.XoffSent: 0
dev.bge.0.stats.tx.InternalMacTransmitErrors: 0
dev.bge.0.stats.tx.SingleCollisionFrames: 0
dev.bge.0.stats.tx.MultipleCollisionFrames: 0
dev.bge.0.stats.tx.DeferredTransmissions: 0
dev.bge.0.stats.tx.ExcessiveCollisions: 0
dev.bge.0.stats.tx.LateCollisions: 0
dev.bge.0.stats.tx.UnicastPkts: 168
dev.bge.0.stats.tx.MulticastPkts: 0
dev.bge.0.stats.tx.BroadcastPkts: 5
dev.bge.1.%desc: Broadcom NetXtreme Gigabit Ethernet Controller, ASIC rev. 0x5717100
dev.bge.1.%driver: bge
dev.bge.1.%location: slot=0 function=1 handle=_SB_.PCI0.RP06.LAN2
dev.bge.1.%pnpinfo: vendor=0x14e4 device=0x1656 subvendor=0x1bcf subdevice=0x8038 class=0x020000
dev.bge.1.%parent: pci58
dev.bge.1.forced_collapse: 0
dev.bge.1.msi: 1
dev.bge.1.forced_udpcsum: 0
dev.bge.1.stats.FramesDroppedDueToFilters: 0
dev.bge.1.stats.DmaWriteQueueFull: 0
dev.bge.1.stats.DmaWriteHighPriQueueFull: 0
dev.bge.1.stats.NoMoreRxBDs: 0
dev.bge.1.stats.InputDiscards: 0
dev.bge.1.stats.InputErrors: 0
dev.bge.1.stats.RecvThresholdHit: 0
dev.bge.1.stats.rx.ifHCInOctets: 0
dev.bge.1.stats.rx.Fragments: 0
dev.bge.1.stats.rx.UnicastPkts: 0
dev.bge.1.stats.rx.MulticastPkts: 0
dev.bge.1.stats.rx.BroadcastPkts: 0
dev.bge.1.stats.rx.FCSErrors: 0
dev.bge.1.stats.rx.AlignmentErrors: 0
dev.bge.1.stats.rx.xonPauseFramesReceived: 0
dev.bge.1.stats.rx.xoffPauseFramesReceived: 0
dev.bge.1.stats.rx.ControlFramesReceived: 0
dev.bge.1.stats.rx.xoffStateEntered: 0
dev.bge.1.stats.rx.FramesTooLong: 0
dev.bge.1.stats.rx.Jabbers: 0
dev.bge.1.stats.rx.UndersizePkts: 0
dev.bge.1.stats.tx.ifHCOutOctets: 0
dev.bge.1.stats.tx.Collisions: 0
dev.bge.1.stats.tx.XonSent: 0
dev.bge.1.stats.tx.XoffSent: 0
dev.bge.1.stats.tx.InternalMacTransmitErrors: 0
dev.bge.1.stats.tx.SingleCollisionFrames: 0
dev.bge.1.stats.tx.MultipleCollisionFrames: 0
dev.bge.1.stats.tx.DeferredTransmissions: 0
dev.bge.1.stats.tx.ExcessiveCollisions: 0
dev.bge.1.stats.tx.LateCollisions: 0
dev.bge.1.stats.tx.UnicastPkts: 0
dev.bge.1.stats.tx.MulticastPkts: 0
dev.bge.1.stats.tx.BroadcastPkts: 0
dev.miibus.0.%desc: MII bus
dev.miibus.0.%driver: miibus
dev.miibus.0.%parent: bge0
dev.miibus.1.%desc: MII bus
dev.miibus.1.%driver: miibus
dev.miibus.1.%parent: bge1
dev.brgphy.0.%desc: BCM5717C 1000BASE-T media interface
dev.brgphy.0.%driver: brgphy
dev.brgphy.0.%location: phyno=1
dev.brgphy.0.%pnpinfo: oui=0x1be9 model=0x20 rev=0x0
dev.brgphy.0.%parent: miibus0
dev.brgphy.1.%desc: BCM5717C 1000BASE-T media interface
dev.brgphy.1.%driver: brgphy
dev.brgphy.1.%location: phyno=2
dev.brgphy.1.%pnpinfo: oui=0x1be9 model=0x20 rev=0x0
dev.brgphy.1.%parent: miibus1
dev.isab.0.%desc: PCI-ISA bridge
dev.isab.0.%driver: isab
dev.isab.0.%location: slot=31 function=0 handle=_SB_.PCI0.LPCB
dev.isab.0.%pnpinfo: vendor=0x8086 device=0x8c54 subvendor=0x1bcf subdevice=0x8038 class=0x060100
dev.isab.0.%parent: pci0
dev.isa.0.%desc: ISA bus
dev.isa.0.%driver: isa
dev.isa.0.%parent: isab0
dev.ahci.0.%desc: Intel Lynx Point AHCI SATA controller
dev.ahci.0.%driver: ahci
dev.ahci.0.%location: slot=31 function=2 handle=_SB_.PCI0.SAT0
dev.ahci.0.%pnpinfo: vendor=0x8086 device=0x8c02 subvendor=0x1bcf subdevice=0x8038 class=0x010601
dev.ahci.0.%parent: pci0
dev.ahcich.0.%desc: AHCI channel
dev.ahcich.0.%driver: ahcich
dev.ahcich.0.%location: channel=0
dev.ahcich.0.%parent: ahci0
dev.ahcich.1.%desc: AHCI channel

```

```

dev.ahcich.1.%driver: ahcich
dev.ahcich.1.%location: channel=1
dev.ahcich.1.%parent: ahci0
dev.ahcich.2.%desc: AHCI channel
dev.ahcich.2.%driver: ahcich
dev.ahcich.2.%location: channel=2
dev.ahcich.2.%parent: ahci0
dev.ahcich.3.%desc: AHCI channel
dev.ahcich.3.%driver: ahcich
dev.ahcich.3.%location: channel=3
dev.ahcich.3.%parent: ahci0
dev.ahcich.4.%desc: AHCI channel
dev.ahcich.4.%driver: ahcich
dev.ahcich.4.%location: channel=4
dev.ahcich.4.%parent: ahci0
dev.ahcich.5.%desc: AHCI channel
dev.ahcich.5.%driver: ahcich
dev.ahcich.5.%location: channel=5
dev.ahcich.5.%parent: ahci0
dev.ahciem.0.%desc: AHCI enclosure management bridge
dev.ahciem.0.%driver: ahciem
dev.ahciem.0.%parent: ahci0
dev.acpi_button.0.%desc: Power Button
dev.acpi_button.0.%driver: acpi_button
dev.acpi_button.0.%location: handle=_SB_.PWRB
dev.acpi_button.0.%pnpinfo: _HID=PNP0C0C _UID=0
dev.acpi_button.0.%parent: acpi0
dev.atdma.0.%desc: AT DMA controller
dev.atdma.0.%driver: atdma
dev.atdma.0.%location: handle=_SB_.PCI0.LPCB.DMAC
dev.atdma.0.%pnpinfo: _HID=PNP0200 _UID=0
dev.atdma.0.%parent: acpi0
dev.fpuvnp.0.%desc: Legacy ISA coprocessor support
dev.fpuvnp.0.%driver: fpuvnp
dev.fpuvnp.0.%location: handle=_SB_.PCI0.LPCB.MATH
dev.fpuvnp.0.%pnpinfo: _HID=PNP0C04 _UID=0
dev.fpuvnp.0.%parent: acpi0
dev.uart.0.%desc: 16550 or compatible
dev.uart.0.%driver: uart
dev.uart.0.%location: handle=_SB_.PCI0.LPCB.UAR1
dev.uart.0.%pnpinfo: _HID=PNP0501 _UID=1
dev.uart.0.%parent: acpi0
dev.uart.0.%wake: 0
dev.uart.1.%desc: 16550 or compatible
dev.uart.1.%driver: uart
dev.uart.1.%location: handle=_SB_.PCI0.LPCB.UAR2
dev.uart.1.%pnpinfo: _HID=PNP0501 _UID=2
dev.uart.1.%parent: acpi0
dev.uart.1.%wake: 0
dev.apic.0.%desc: APIC resources
dev.apic.0.%driver: apic
dev.apic.0.%parent: nexus0
dev.orm.0.%desc: ISA Option ROMs
dev.orm.0.%driver: orm
dev.orm.0.%parent: isa0
dev.sc.0.%desc: System console
dev.sc.0.%driver: sc
dev.sc.0.%parent: isa0
dev.vga.0.%desc: Generic ISA VGA
dev.vga.0.%driver: vga
dev.vga.0.%parent: isa0
dev.acpi_perf.0.%driver: acpi_perf
dev.acpi_perf.0.%parent: cpu0
dev.acpi_perf.1.%driver: acpi_perf
dev.acpi_perf.1.%parent: cpu1
dev.acpi_perf.2.%driver: acpi_perf
dev.acpi_perf.2.%parent: cpu2
dev.acpi_perf.3.%driver: acpi_perf
dev.acpi_perf.3.%parent: cpu3
dev.est.0.%desc: Enhanced SpeedStep Frequency Control
dev.est.0.%driver: est
dev.est.0.%parent: cpu0
dev.est.0.%freq_settings: 3101/80000 3100/80000 2900/72713 2800/69558 2600/62669 2400/56794 2300/53935 2100/47673 1900/42370 1800/39795
1600/34136 1500/31729 1300/26432 1100/21994 1000/19851 800/15113
dev.est.1.%desc: Enhanced SpeedStep Frequency Control
dev.est.1.%driver: est
dev.est.1.%parent: cpu1
dev.est.1.%freq_settings: 3101/80000 3100/80000 2900/72713 2800/69558 2600/62669 2400/56794 2300/53935 2100/47673 1900/42370 1800/39795
1600/34136 1500/31729 1300/26432 1100/21994 1000/19851 800/15113
dev.est.2.%desc: Enhanced SpeedStep Frequency Control
dev.est.2.%driver: est
dev.est.2.%parent: cpu2
dev.est.2.%freq_settings: 3101/80000 3100/80000 2900/72713 2800/69558 2600/62669 2400/56794 2300/53935 2100/47673 1900/42370 1800/39795
1600/34136 1500/31729 1300/26432 1100/21994 1000/19851 800/15113
dev.est.3.%desc: Enhanced SpeedStep Frequency Control
dev.est.3.%driver: est
dev.est.3.%parent: cpu3
dev.est.3.%freq_settings: 3101/80000 3100/80000 2900/72713 2800/69558 2600/62669 2400/56794 2300/53935 2100/47673 1900/42370 1800/39795
1600/34136 1500/31729 1300/26432 1100/21994 1000/19851 800/15113
dev.cpubreq.0.%driver: cpubreq
dev.cpubreq.0.%parent: cpu0

```

```

dev.cpubfreq.1.%driver: cpufreq
dev.cpubfreq.1.%parent: cpu1
dev.cpubfreq.2.%driver: cpufreq
dev.cpubfreq.2.%parent: cpu2
dev.cpubfreq.3.%driver: cpufreq
dev.cpubfreq.3.%parent: cpu3
dev.p4tcc.0.%desc: CPU Frequency Thermal Control
dev.p4tcc.0.%driver: p4tcc
dev.p4tcc.0.%parent: cpu0
dev.p4tcc.0.freq_settings: 10000/-1 8750/-1 7500/-1 6250/-1 5000/-1 3750/-1 2500/-1 1250/-1
dev.p4tcc.1.%desc: CPU Frequency Thermal Control
dev.p4tcc.1.%driver: p4tcc
dev.p4tcc.1.%parent: cpu1
dev.p4tcc.1.freq_settings: 10000/-1 8750/-1 7500/-1 6250/-1 5000/-1 3750/-1 2500/-1 1250/-1
dev.p4tcc.2.%desc: CPU Frequency Thermal Control
dev.p4tcc.2.%driver: p4tcc
dev.p4tcc.2.%parent: cpu2
dev.p4tcc.2.freq_settings: 10000/-1 8750/-1 7500/-1 6250/-1 5000/-1 3750/-1 2500/-1 1250/-1
dev.p4tcc.3.%desc: CPU Frequency Thermal Control
dev.p4tcc.3.%driver: p4tcc
dev.p4tcc.3.%parent: cpu3
dev.p4tcc.3.freq_settings: 10000/-1 8750/-1 7500/-1 6250/-1 5000/-1 3750/-1 2500/-1 1250/-1
dev.uhub.0.%desc: 0x8086 XHCI root HUB, class 9/0, rev 3.00/1.00, addr 1
dev.uhub.0.%driver: uhub
dev.uhub.0.%parent: usb0
dev.uhub.1.%desc: Intel EHCI root HUB, class 9/0, rev 2.00/1.00, addr 1
dev.uhub.1.%driver: uhub
dev.uhub.1.%parent: usb2
dev.uhub.2.%desc: Intel EHCI root HUB, class 9/0, rev 2.00/1.00, addr 1
dev.uhub.2.%driver: uhub
dev.uhub.2.%parent: usb1
dev.uhub.3.%desc: vendor 0x8087 product 0x8000, class 9/0, rev 2.00/0.04, addr 2
dev.uhub.3.%driver: uhub
dev.uhub.3.%location: bus=1 hubaddr=1 port=2 devaddr=2 interface=0
dev.uhub.3.%pnpinfo: vendor=0x8087 product=0x8000 devclass=0x09 devsubclass=0x00 sernum="" release=0x0004 mode=host intclass=0x09
intsubclass=0x00 intprotocol=0x00
dev.uhub.3.%parent: uhub1
dev.uhub.4.%desc: vendor 0x8087 product 0x8008, class 9/0, rev 2.00/0.04, addr 2
dev.uhub.4.%driver: uhub
dev.uhub.4.%location: bus=1 hubaddr=1 port=1 devaddr=2 interface=0
dev.uhub.4.%pnpinfo: vendor=0x8087 product=0x8008 devclass=0x09 devsubclass=0x00 sernum="" release=0x0004 mode=host intclass=0x09
intsubclass=0x00 intprotocol=0x00
dev.uhub.4.%parent: uhub2
dev.uhub.5.%desc: Chicony Generic USB Hub, class 9/0, rev 1.10/1.02, addr 3
dev.uhub.5.%driver: uhub
dev.uhub.5.%location: bus=2 hubaddr=2 port=2 devaddr=3 interface=0
dev.uhub.5.%pnpinfo: vendor=0x04fe product=0x0008 devclass=0x09 devsubclass=0x00 sernum="" release=0x0102 mode=host intclass=0x09
intsubclass=0x00 intprotocol=0x00
dev.uhub.5.%parent: uhub3
dev.ukbd.0.%desc: Keyboard Interface
dev.ukbd.0.%driver: ukbd
dev.ukbd.0.%location: bus=2 hubaddr=3 port=1 devaddr=3 interface=0
dev.ukbd.0.%pnpinfo: vendor=0x046b product=0xff10 devclass=0x00 devsubclass=0x00 sernum="" release=0x0100 mode=host intclass=0x03
intsubclass=0x01 intprotocol=0x01
dev.ukbd.0.%parent: uhub4
dev.ukbd.1.%desc: Chicony PFU-65 USB Keyboard, class 0/0, rev 1.10/1.02, addr 4
dev.ukbd.1.%driver: ukbd
dev.ukbd.1.%location: bus=3 hubaddr=1 port=2 devaddr=4 interface=0
dev.ukbd.1.%pnpinfo: vendor=0x04fe product=0x0006 devclass=0x00 devsubclass=0x00 sernum="" release=0x0102 mode=host intclass=0x03
intsubclass=0x01 intprotocol=0x01
dev.ukbd.1.%parent: uhub5
dev.umass.0.%desc: Interface
dev.umass.0.%driver: umass
dev.umass.0.%location: bus=2 hubaddr=4 port=1 devaddr=4 interface=0
dev.umass.0.%pnpinfo: vendor=0x046b product=0xff92 devclass=0x00 devsubclass=0x00 sernum="AAAA BBBBCCCC4" release=0x0100 mode=host
intclass=0x08 intsubclass=0x06 intprotocol=0x50
dev.umass.0.%parent: uhub4
dev.umass.1.%desc: UFD 2.0 Silicon-Power16G, class 0/0, rev 2.00/1.00, addr 5
dev.umass.1.%driver: umass
dev.umass.1.%location: bus=2 hubaddr=1 port=2 devaddr=5 interface=0
dev.umass.1.%pnpinfo: vendor=0x13fe product=0x4100 devclass=0x00 devsubclass=0x00 sernum="12090358056E600298333564202" release=0x0100
mode=host intclass=0x08 intsubclass=0x06 intprotocol=0x50
dev.umass.1.%parent: uhub3
dev.ums.0.%desc: Mouse Interface
dev.ums.0.%driver: ums
dev.ums.0.%location: bus=2 hubaddr=3 port=1 devaddr=3 interface=1
dev.ums.0.%pnpinfo: vendor=0x046b product=0xff10 devclass=0x00 devsubclass=0x00 sernum="" release=0x0100 mode=host intclass=0x03
intsubclass=0x01 intprotocol=0x02
dev.ums.0.%parent: uhub4
dev.ums.0.parseinfo: i1: Z:r0, p40, s8; B1:r0, p0, s1; B2:r0, p1, s1; B3:r0, p2, s1;
hptmv.status: RocketRAID 18xx SATA Controller driver Version v1.16

```

# システム起動時メッセージ

```
Copyright (c) 1992-2014 The FreeBSD Project.
Copyright (c) 1979, 1980, 1983, 1986, 1988, 1989, 1991, 1992, 1993, 1994
    The Regents of the University of California. All rights reserved.
FreeBSD is a registered trademark of The FreeBSD Foundation.
FreeBSD 10.0-STABLE #0 r262915: Sat Mar  8 03:13:32 UTC 2014
    root@grind.freebsd.org:/usr/obj/usr/src/sys/GENERIC amd64
FreeBSD clang version 3.3 (tags/RELEASE_33/final 183502) 20130610
CPU: Intel(R) Xeon(R) CPU E3-1220 v3 @ 3.10GHz (3092.90-MHz K8-class CPU)
    Origin = "GenuineIntel"  Id = 0x306c3  Family = 0x6  Model = 0x3c  Stepping = 3

Features=0xbfebfbff<FPU,VME,DE,PSE,TSC,MSR,PAE,MCE,CX8,APIC,SEP,MTRR,PGE,MCA,CMOV,PAT,PSE36,CLFLUSH,DTS,ACPI,MMX,FXSR,SSE,SSE2,SS,HTT,TM,PBE>
    Features2=0x7ffafbff<SSE3,PCLMULQDQ,DTES64,MON,DS_CPL,VMX,SMX,EST,TM2,SSSE3,
<b11>,FMA,CX16,xTPR,PDCM,PCID,SSE4.1,SSE4.2,x2APIC,MOVBE,POPCNT,TSCDLT,AESNI,XSAVE,OSXSAVE,AVX,F16C,RDRAND>
    AMD Features=0x2c100800<SYSCALL,NX,Page1GB,RDTSCP,LM>
    AMD Features2=0x21<LAHF,ABM>
    Standard Extended Features=0x2fbb<GSFSBASE,TSCADJ,BMI1,HLE,AVX2,SMEP,BMI2,ENHMOVSB,INVPID,RTM>
    TSC: P-state invariant, performance statistics
real memory = 2147483648 (2048 MB)
avail memory = 1994702848 (1902 MB)
Event timer "LAPIC" quality 600
ACPI APIC Table: <AMI 0627 >
FreeBSD/SMP: Multiprocessor System Detected: 4 CPUs
FreeBSD/SMP: 1 package(s) x 4 core(s)
cpu0 (BSP): APIC ID: 0
cpu1 (AP): APIC ID: 2
cpu2 (AP): APIC ID: 4
cpu3 (AP): APIC ID: 6
ioapic0 <Version 2.0> irqs 0-23 on motherboard
kbd1 at kbdmux0
random: <Software, Yarrow> initialized
acpi0: <AMI 0627> on motherboard
acpi0: Power Button (fixed)
acpi0: reservation of 67, 1 (4) failed
acpi0: reservation of 0, a0000 (3) failed
cpu0: <ACPI CPU> on acpi0
cpu1: <ACPI CPU> on acpi0
cpu2: <ACPI CPU> on acpi0
cpu3: <ACPI CPU> on acpi0
hpet0: <High Precision Event Timer> iomem 0xfed00000-0xfed003ff on acpi0
Timecounter "HPET" frequency 14318180 Hz quality 950
Event timer "HPET" frequency 14318180 Hz quality 550
Event timer "HPET1" frequency 14318180 Hz quality 440
Event timer "HPET2" frequency 14318180 Hz quality 440
Event timer "HPET3" frequency 14318180 Hz quality 440
Event timer "HPET4" frequency 14318180 Hz quality 440
atrtc0: <AT realtime clock> port 0x70-0x77 irq 8 on acpi0
atrtc0: Warning: Couldn't map I/O.
Event timer "RTC" frequency 32768 Hz quality 0
attimer0: <AT timer> port 0x40-0x43,0x50-0x53 irq 0 on acpi0
Timecounter "i8254" frequency 1193182 Hz quality 0
Event timer "i8254" frequency 1193182 Hz quality 100
Timecounter "ACPI-fast" frequency 3579545 Hz quality 900
acpi_timer0: <24-bit timer at 3.579545MHz> port 0x1808-0x180b on acpi0
pcib0: <ACPI Host-PCI bridge> port 0xcfc8-0xcfff on acpi0
pci0: <ACPI PCI bus> on pcib0
xhci0: <Intel Lynx Point USB 3.0 controller> mem 0xdf900000-0xdf90ffff irq 16 at device 20.0 on pci0
xhci0: 32 byte context size.
xhci0: Port routing mask set to 0xffffffff
usb0 on xhci0
pci0: <simple comms> at device 22.0 (no driver attached)
pci0: <simple comms> at device 22.1 (no driver attached)
ehci0: <EHCI (generic) USB 2.0 controller> mem 0xdf914000-0xdf9143ff irq 16 at device 26.0 on pci0
usb1: EHCI version 1.0
usb1 on ehci0
pcib1: <ACPI PCI-PCI bridge> irq 16 at device 28.0 on pci0
pci33: <ACPI PCI bus> on pcib1
pcib2: <ACPI PCI-PCI bridge> irq 16 at device 28.4 on pci0
pcib2: failed to allocate initial memory window: 0xde000000-0xdf8ffff
pci57: <ACPI PCI bus> on pcib2
vgapci0: <VGA-compatible display> mem 0xde000000-0xdeffffff,0xdf000000-0xdf7ffff irq 16 at device 0.0 on pci57
vgapci0: Boot video device
pcib3: <ACPI PCI-PCI bridge> irq 17 at device 28.5 on pci0
pci58: <ACPI PCI bus> on pcib3
bge0: <Broadcom NetXtreme Gigabit Ethernet Controller, ASIC rev. 0x5717100> mem
0xdfe50000-0xdfe5ffff,0xdfe40000-0xdfe4ffff,0xdfe30000-0xdfe3ffff irq 17 at device 0.0 on pci58
bge0: APE FW version: NCSI v1.1.19.0
bge0: CHIP ID 0x05717100; ASIC REV 0x5717; CHIP REV 0x5717; PCI-E
miibus0: <MII bus> on bge0
brgphy0: <BCM5717C 1000BASE-T media interface> PHY 1 on miibus0
brgphy0: 10baseT, 10baseT-FDX, 100baseTX, 100baseTX-FDX, 1000baseT, 1000baseT-master, 1000baseT-FDX, 1000baseT-FDX-master, auto, auto-flow
bge0: Ethernet address: 94:de:80:8e:98:ca
bge1: <Broadcom NetXtreme Gigabit Ethernet Controller, ASIC rev. 0x5717100> mem
0xdfe20000-0xdfe2ffff,0xdfe10000-0xdfe1ffff,0xdfe00000-0xdfe0ffff irq 18 at device 0.1 on pci58
bge1: APE FW version: NCSI v1.1.19.0
bge1: CHIP ID 0x05717100; ASIC REV 0x5717; CHIP REV 0x5717; PCI-E
```

```

bge1: firmware handshake timed out, found 0x4b657654
miibus1: <MII bus> on bge1
brgphy1: <BCM5717C 1000BASE-T media interface> PHY 2 on miibus1
brgphy1: 10baseT, 10baseT-FDX, 100baseTX, 100baseTX-FDX, 1000baseT, 1000baseT-master, 1000baseT-FDX, 1000baseT-FDX-master, auto, auto-flow
bge1: Ethernet address: 94:de:80:8e:98:cb
ehci1: <EHCI (generic) USB 2.0 controller> mem 0xdf913000-0xdf9133ff irq 23 at device 29.0 on pci0
usb2: EHCI version 1.0
usb2 on ehci1
isab0: <PCI-ISA bridge> at device 31.0 on pci0
isa0: <ISA bus> on isab0
ahci0: <Intel Lynx Point AHCI SATA controller> port 0xf070-0xf077,0xf060-0xf063,0xf050-0xf057,0xf040-0xf043,0xf020-0xf03f mem
0xdf912000-0xdf9127ff irq 19 at device 31.2 on pci0
ahci0: AHCI v1.30 with 6 6Gbps ports, Port Multiplier not supported
ahcich0: <AHCI channel> at channel 0 on ahci0
ahcich1: <AHCI channel> at channel 1 on ahci0
ahcich2: <AHCI channel> at channel 2 on ahci0
ahcich3: <AHCI channel> at channel 3 on ahci0
ahcich4: <AHCI channel> at channel 4 on ahci0
ahcich5: <AHCI channel> at channel 5 on ahci0
ahciem0: <AHCI enclosure management bridge> on ahci0
pci0: <serial bus, SMBus> at device 31.3 (no driver attached)
acpi_button0: <Power Button> on acpi0
uart0: <16550 or compatible> port 0x3f8-0x3ff irq 4 flags 0x10 on acpi0
uart1: <16550 or compatible> port 0x2f8-0x2ff irq 3 on acpi0
orm0: <ISA Option ROMs> at iomem 0xc0000-0xc7fff,0xc8000-0xcacfff on isa0
sc0: <System console> at flags 0x100 on isa0
sc0: VGA <16 virtual consoles, flags=0x300>
vga0: <Generic ISA VGA> at port 0x3c0-0x3df iomem 0xa0000-0xbffff on isa0
ppc0: cannot reserve I/O port range
est0: <Enhanced SpeedStep Frequency Control> on cpu0
p4tcc0: <CPU Frequency Thermal Control> on cpu0
est1: <Enhanced SpeedStep Frequency Control> on cpu1
p4tcc1: <CPU Frequency Thermal Control> on cpu1
est2: <Enhanced SpeedStep Frequency Control> on cpu2
p4tcc2: <CPU Frequency Thermal Control> on cpu2
est3: <Enhanced SpeedStep Frequency Control> on cpu3
p4tcc3: <CPU Frequency Thermal Control> on cpu3
Timecounters tick every 1.000 msec
random: unblocking device.
usb0: 5.0Gbps Super Speed USB v3.0
usb1: 480Mbps High Speed USB v2.0
usb2: 480Mbps High Speed USB v2.0
ugen0.1: <0x8086> at usb0
uhub0: <0x8086 XHCI root HUB, class 9/0, rev 3.00/1.00, addr 1> on usb0
ugen2.1: <Intel> at usb2
uhub1: <Intel EHCI root HUB, class 9/0, rev 2.00/1.00, addr 1> on usb2
ugen1.1: <Intel> at usb1
uhub2: <Intel EHCI root HUB, class 9/0, rev 2.00/1.00, addr 1> on usb1
ada0 at ahcich5 bus 0 scbus5 target 0 lun 0
ada0: <Samsung SSD 840 Series DXT06B0Q> ATA-9 SATA 3.x device
ada0: Serial Number S14JNEACB16735W
ada0: 300.000MB/s transfers (SATA 2.x, UDMA6, PIO 8192bytes)
ada0: Command Queuing enabled
ada0: 238475MB (488397168 512 byte sectors: 16H 63S/T 16383C)
ada0: Previously was known as ad14
ses0 at ahciem0 bus 0 scbus6 target 0 lun 0
ses0: <AHCI SGPIO Enclosure 1.00 0001> SEMB S-E-S 2.00 device
ses0: SEMB SES Device
cd0 at ahcich4 bus 0 scbus4 target 0 lun 0
cd0: <MATSHITA DVD-RAM UJ8A0AS 1.40> Removable CD-ROM SCSI-0 device
cd0: Serial Number HP11 014866
cd0: 150.000MB/s transfers (SATA 1.x, UDMA6, ATAPI 12bytes, PIO 8192bytes)
cd0: Attempt to query device size failed: NOT READY, Medium not present - tray closed
Netvsc initializing... SMP: AP CPU #3 Launched!
SMP: AP CPU #1 Launched!
SMP: AP CPU #2 Launched!
Timecounter "TSC-low" frequency 1546450542 Hz quality 1000
Root mount waiting for: usb2 usb1 usb0
uhub1: 2 ports with 2 removable, self powered
uhub2: 2 ports with 2 removable, self powered
uhub0: 21 ports with 21 removable, self powered
Root mount waiting for: usb2 usb1 usb0
xhci0: Port routing mask set to 0x00000000
usb_alloc_device: device init 2 failed (USB_ERR_IOERROR, ignored)
ugen0.2: <Unknown> at usb0 (disconnected)
uhub_reattach_port: could not allocate new device
ugen2.2: <vendor 0x8087> at usb2
uhub3: <vendor 0x8087 product 0x8000, class 9/0, rev 2.00/0.04, addr 2> on usb2
ugen1.2: <vendor 0x8087> at usb1
uhub4: <vendor 0x8087 product 0x8008, class 9/0, rev 2.00/0.04, addr 2> on usb1
uhub3: 6 ports with 6 removable, self powered
uhub4: 6 ports with 6 removable, self powered
ugen1.3: <American Megatrends Inc.> at usb1
ukbd0: <Keyboard Interface> on usb1
kbd0 at ukbd0
Root mount waiting for: usb1
Root mount waiting for: usb1
ugen1.4: <American Megatrends Inc.> at usb1
umass0: <Interface> on usb1
umass0: SCSI over Bulk-Only; quirks = 0x0000
umass0:7:0:-1: Attached to scbus7

```

```
Trying to mount root from ufs:/dev/ada0p2 [rw]...
cd1 at umass-sim0 bus 0 scbus7 target 0 lun 0
cd1: <AMI Remote CD/DVD 1.00> Removable CD-ROM SCSI-0 device
cd1: Serial Number AAAABBBBCCCC4
cd1: 40.000MB/s transfers
cd1: Attempt to query device size failed: NOT READY, Medium not present
cd1: quirks=0x10<10_BYTE_ONLY>
da0 at umass-sim0 bus 0 scbus7 target 0 lun 1
da0: <AMI Remote FD 1.00> Removable Direct Access SCSI-0 device
da0: Serial Number AAAABBBBCCCC4
da0: 40.000MB/s transfers
da0: Attempt to query device size failed: NOT READY, Medium not present
da0: quirks=0x2<NO_6_BYTE>
da1 at umass-sim0 bus 0 scbus7 target 0 lun 2
da1: <AMI Remote USB MEM 1.00> Removable Direct Access SCSI-0 device
da1: Serial Number AAAABBBBCCCC4
da1: 40.000MB/s transfers
da1: Attempt to query device size failed: NOT READY, Medium not present
da1: quirks=0x2<NO_6_BYTE>
da2 at umass-sim0 bus 0 scbus7 target 0 lun 3
da2: <AMI Virtual Flash 1.00> Removable Direct Access SCSI-0 device
da2: Serial Number AAAABBBBCCCC4
da2: 40.000MB/s transfers
da2: Attempt to query device size failed: NOT READY, Medium not present
da2: quirks=0x2<NO_6_BYTE>
ums0: <Mouse Interface> on usb1
ums0: 3 buttons and [Z] coordinates ID=0
```

# カーネルデバイスツリー

```
nexus0
  apic0
    I/O memory addresses:
      0xfec00000-0xfec0001f
  ram0
    I/O memory addresses:
      0x0-0x9b7fff
      0x100000-0x69892fff
      0x6989a000-0x7c780fff
      0x7f7ff000-0x7f7fffff
  acpi0
    Interrupt request lines:
      0x9
    I/O ports:
      0x10-0x1f
      0x22-0x3f
      0x44-0x5f
      0x61
      0x62-0x63
      0x65-0x6f
      0x70
      0x72-0x7f
      0x80
      0x84-0x86
      0x88
      0x8c-0x8e
      0x90-0x9f
      0xa2-0xbf
      0xe0-0xef
      0x4d0-0x4d1
      0x500-0x5fe
      0x600-0x6fe
      0x700-0x7fe
      0x800-0x8fe
      0xca4-0xca5
      0x164e-0x164f
      0x1800-0x18fe
      0xffff
    I/O memory addresses:
      0xdf800000-0xdf87ffff
      0xdf894000-0xdf894fff
      0xdfdf000-0xdfdf0fff
      0xdfdf0000-0xdfdf0fff
      0xdfdf0000-0xdfdf0fff
      0xe0000000-0xe0000fff
      0xfed10000-0xfed17fff
      0xfed18000-0xfed18fff
      0xfed19000-0xfed19fff
      0xfed1c000-0xfed1ffff
      0xfed20000-0xfed3ffff
      0xfed40000-0xfed44fff
      0xfed45000-0xfed8ffff
      0xfed90000-0xfed93fff
      0xfef00000-0xfef0ffff
      0xff000000-0xff00ffff
  cpu0
    ACPI I/O ports:
      0x1815
    acpi_perf0
    est0
    p4tcc0
    cpufreq0
  cpu1
    ACPI I/O ports:
      0x1815
    acpi_perf1
    est1
    p4tcc1
    cpufreq1
  cpu2
    ACPI I/O ports:
      0x1815
    acpi_perf2
    est2
    p4tcc2
    cpufreq2
  cpu3
    ACPI I/O ports:
      0x1815
    acpi_perf3
    est3
    p4tcc3
    cpufreq3
  pcib0
    I/O ports:
      0xcf8-0xcff
```



```

pci0
  hostb0
  xhci0
    Interrupt request lines:
      0x108
    I/O memory addresses:
      0xdf900000-0xdf90ffff
  usb0
  uhub0
ehci0
  Interrupt request lines:
    0x10
  I/O memory addresses:
    0xdf914000-0xdf9143ff
  usb1
  uhub2
  uhub4
  ukbd0
  umass0
  ums0
pcib1
pci33
pcib2
  I/O memory addresses:
    0xde000000-0xdf7fffff
pci57
  vgapci0
    pcib2 memory window:
      0xde000000-0xdeffffff
      0xdf000000-0xdf7fffff
pcib3
  I/O memory addresses:
    0xdfe00000-0xdfeffffff
pci58
  bge0
    Interrupt request lines:
      0x109
    pcib3 prefetch window:
      0xdfe30000-0xdfe3ffff
      0xdfe40000-0xdfe4ffff
      0xdfe50000-0xdfe5ffff
  miibus0
  brgphy0
  bge1
    Interrupt request lines:
      0x10a
    pcib3 prefetch window:
      0xdfe00000-0xdfe0ffff
      0xdfe10000-0xdfe1ffff
      0xdfe20000-0xdfe2ffff
  miibus1
  brgphy1
ehci1
  Interrupt request lines:
    0x17
  I/O memory addresses:
    0xdf913000-0xdf9133ff
  usb2
  uhub1
  uhub3
  uhub5
  ukbd1
  umass1
isab0
isa0
sc0
vga0
  I/O ports:
    0x3c0-0x3df
  I/O memory addresses:
    0xa0000-0xbffff
orm0
  I/O memory addresses:
    0xc0000-0xc7fff
    0xc8000-0xcafff
ahci0
  Interrupt request lines:
    0x10b
  I/O ports:
    0xf020-0xf03f
    0xf040-0xf043
    0xf050-0xf057
    0xf060-0xf063
    0xf070-0xf077
  I/O memory addresses:
    0xdf912000-0xdf9127ff
ahcich0
  I/O memory addresses:
    0xdf912100-0xdf91217f
ahcich1
  I/O memory addresses:

```

```

    0xdf912180-0xdf9121ff
ahcich2
  I/O memory addresses:
    0xdf912200-0xdf91227f
ahcich3
  I/O memory addresses:
    0xdf912280-0xdf9122ff
ahcich4
  I/O memory addresses:
    0xdf912300-0xdf91237f
ahcich5
  I/O memory addresses:
    0xdf912380-0xdf9123ff
ahciem0
  I/O memory addresses:
    0xdf912020-0xdf912023
    0xdf912580-0xdf912587
acpi_sysresource0
atdma0
  DMA request lines:
    4
  I/O ports:
    0xc0-0xdf
hpet0
  Interrupt request lines:
    0x100
    0x101
    0x102
    0x103
    0x104
    0x105
    0x106
    0x107
  I/O memory addresses:
    0xfed00000-0xfed003ff
fpupnp0
  I/O ports:
    0xf0
acpi_sysresource1
atrtc0
  Interrupt request lines:
    0x8
attimer0
  Interrupt request lines:
    0x0
  I/O ports:
    0x40-0x43
acpi_sysresource2
acpi_sysresource3
uart0
  Interrupt request lines:
    0x4
  I/O ports:
    0x3f8-0x3ff
uart1
  Interrupt request lines:
    0x3
  I/O ports:
    0x2f8-0x2ff
acpi_sysresource4
acpi_sysresource5
acpi_sysresource6
acpi_sysresource7
pci_link0
pci_link1
pci_link2
pci_link3
pci_link4
pci_link5
pci_link6
pci_link7
acpi_button0
acpi_timer0
  ACPI I/O ports:
    0x1808-0x180b

```

# PCIバスデータ詳細一覧

```
hostb0@pci:0:0:0:      class=0x060000 card=0x80381bcf chip=0x0c088086 rev=0x06 hdr=0x00
  vendor    = 'Intel Corporation'
  device    = 'Haswell DRAM Controller'
  class     = bridge
  subclass  = HOST-PCI
  cap 09[e0] = vendor (length 12) Intel cap 0 version 1
xhci@pci:0:0:20:0:     class=0x0c0330 card=0x80381bcf chip=0x8c318086 rev=0x04 hdr=0x00
  vendor    = 'Intel Corporation'
  device    = 'Lynx Point USB xHCI Host Controller'
  class     = serial bus
  subclass  = USB
  cap 01[70] = powerspec 2 supports D0 D3 current D0
  cap 05[80] = MSI supports 8 messages, 64 bit enabled with 1 message
none0@pci:0:0:22:0:    class=0x078000 card=0x80381bcf chip=0x8c3a8086 rev=0x04 hdr=0x00
  vendor    = 'Intel Corporation'
  device    = 'Lynx Point MEI Controller'
  class     = simple comms
  cap 01[50] = powerspec 3 supports D0 D3 current D0
  cap 05[8c] = MSI supports 1 message, 64 bit
nonel@pci:0:0:22:1:    class=0x078000 card=0x80381bcf chip=0x8c3b8086 rev=0x04 hdr=0x00
  vendor    = 'Intel Corporation'
  device    = 'Lynx Point MEI Controller'
  class     = simple comms
  cap 01[50] = powerspec 3 supports D0 D3 current D0
  cap 05[8c] = MSI supports 1 message, 64 bit
ehci0@pci:0:0:26:0:    class=0x0c0320 card=0x80381bcf chip=0x8c2d8086 rev=0x04 hdr=0x00
  vendor    = 'Intel Corporation'
  device    = 'Lynx Point USB Enhanced Host Controller'
  class     = serial bus
  subclass  = USB
  cap 01[50] = powerspec 2 supports D0 D3 current D0
  cap 0a[58] = EHCI Debug Port at offset 0xa0 in map 0x14
  cap 13[98] = PCI Advanced Features: FLR TP
pcib1@pci:0:0:28:0:    class=0x060400 card=0x80381bcf chip=0x8c108086 rev=0xd4 hdr=0x01
  vendor    = 'Intel Corporation'
  device    = 'Lynx Point PCI Express Root Port'
  class     = bridge
  subclass  = PCI-PCI
  cap 10[40] = PCI-Express 2 root port slot max data 128(128) link x0(x4)
              speed 0.0(5.0) ASPM disabled(L0s/L1)
  cap 05[80] = MSI supports 1 message
  cap 0d[90] = PCI Bridge card=0x80381bcf
  cap 01[a0] = powerspec 3 supports D0 D3 current D0
pcib2@pci:0:0:28:4:    class=0x060400 card=0x80381bcf chip=0x8c188086 rev=0xd4 hdr=0x01
  vendor    = 'Intel Corporation'
  device    = 'Lynx Point PCI Express Root Port'
  class     = bridge
  subclass  = PCI-PCI
  cap 10[40] = PCI-Express 2 root port slot max data 128(128) link x1(x1)
              speed 2.5(5.0) ASPM disabled(L0s/L1)
  cap 05[80] = MSI supports 1 message
  cap 0d[90] = PCI Bridge card=0x80381bcf
  cap 01[a0] = powerspec 3 supports D0 D3 current D0
pcib3@pci:0:0:28:5:    class=0x060400 card=0x80381bcf chip=0x8c1a8086 rev=0xd4 hdr=0x01
  vendor    = 'Intel Corporation'
  device    = 'Lynx Point PCI Express Root Port'
  class     = bridge
  subclass  = PCI-PCI
  cap 10[40] = PCI-Express 2 root port slot max data 128(128) link x1(x1)
              speed 5.0(5.0) ASPM disabled(L0s/L1)
  cap 05[80] = MSI supports 1 message
  cap 0d[90] = PCI Bridge card=0x80381bcf
  cap 01[a0] = powerspec 3 supports D0 D3 current D0
ehci1@pci:0:0:29:0:    class=0x0c0320 card=0x80381bcf chip=0x8c268086 rev=0x04 hdr=0x00
  vendor    = 'Intel Corporation'
  device    = 'Lynx Point USB Enhanced Host Controller'
  class     = serial bus
  subclass  = USB
  cap 01[50] = powerspec 2 supports D0 D3 current D0
  cap 0a[58] = EHCI Debug Port at offset 0xa0 in map 0x14
  cap 13[98] = PCI Advanced Features: FLR TP
isab0@pci:0:0:31:0:    class=0x060100 card=0x80381bcf chip=0x8c548086 rev=0x04 hdr=0x00
  vendor    = 'Intel Corporation'
  device    = 'Lynx Point LPC Controller'
  class     = bridge
  subclass  = PCI-ISA
  cap 09[e0] = vendor (length 12) Intel cap 1 version 0
              features: AMT, 4 PCI-e x1 slots
ahci0@pci:0:0:31:2:    class=0x010601 card=0x80381bcf chip=0x8c028086 rev=0x04 hdr=0x00
  vendor    = 'Intel Corporation'
  device    = 'Lynx Point 6-port SATA Controller 1 [AHCI mode]'
  class     = mass storage
  subclass  = SATA
  cap 05[80] = MSI supports 1 message enabled with 1 message
  cap 01[70] = powerspec 3 supports D0 D3 current D0
```

```

cap 12[a8] = SATA Index-Data Pair
none2@pci:0:31:3:      class=0x0c0500 card=0x80381bcf chip=0x8c228086 rev=0x04 hdr=0x00
vendor      = 'Intel Corporation'
device      = 'Lynx Point SMBus Controller'
class       = serial bus
subclass    = SMBus
vgapci0@pci:0:57:0:0:  class=0x030000 card=0x80381bcf chip=0x0522102b rev=0x02 hdr=0x00
vendor      = 'Matrox Electronics Systems Ltd.'
device      = 'MGA G200e [Pilot] ServerEngines (SEP1)'
class       = display
subclass    = VGA
cap 01[dc] = powerspec 2 supports D0 D3 current D0
cap 10[e4] = PCI-Express 1 legacy endpoint max data 128(256) link x1(x1)
            speed 2.5(2.5) ASPM disabled(L0s)
cap 05[54] = MSI supports 1 message
bge0@pci:0:58:0:0:    class=0x020000 card=0x80381bcf chip=0x165614e4 rev=0x10 hdr=0x00
vendor      = 'Broadcom Corporation'
device      = 'NetXtreme BCM5718 Gigabit Ethernet PCIe'
class       = network
subclass    = ethernet
cap 01[48] = powerspec 3 supports D0 D3 current D0
cap 03[50] = VPD
cap 05[58] = MSI supports 8 messages, 64 bit enabled with 1 message
cap 11[a0] = MSI-X supports 17 messages
            Table in map 0x20[0x0], PBA in map 0x20[0x1000]
cap 10[ac] = PCI-Express 2 endpoint max data 128(256) FLR link x1(x1)
            speed 5.0(5.0) ASPM disabled(L1)
ecap 0001[100] = AER 1 0 fatal 0 non-fatal 1 corrected
ecap 0003[13c] = Serial 1 000094de808e98ca
ecap 0004[150] = Power Budgeting 1
ecap 0002[160] = VC 1 max VC0
bge1@pci:0:58:0:1:    class=0x020000 card=0x80381bcf chip=0x165614e4 rev=0x10 hdr=0x00
vendor      = 'Broadcom Corporation'
device      = 'NetXtreme BCM5718 Gigabit Ethernet PCIe'
class       = network
subclass    = ethernet
cap 01[48] = powerspec 3 supports D0 D3 current D0
cap 03[50] = VPD
cap 05[58] = MSI supports 8 messages, 64 bit enabled with 1 message
cap 11[a0] = MSI-X supports 17 messages
            Table in map 0x20[0x0], PBA in map 0x20[0x1000]
cap 10[ac] = PCI-Express 2 endpoint max data 128(256) FLR link x1(x1)
            speed 5.0(5.0) ASPM disabled(L1)
ecap 0001[100] = AER 1 0 fatal 0 non-fatal 1 corrected
ecap 0003[13c] = Serial 1 000094de808e98cb
ecap 0004[150] = Power Budgeting 1
ecap 0002[160] = VC 1 max VC0

```

# ACPI電源管理データ詳細一覧

RSD PTR: OEM=AMI, ACPI\_Rev=2.0x (2)  
XSDT=0x7c81b090, length=36, cksum=159  
XSDT: Length=156, Revision=1, Checksum=219,  
OEMID=AMI, OEM Table ID=0627, OEM Revision=0x1072009,  
Creator ID=AMI, Creator Revision=0x10013  
Entries={ 0x7c8288d8, 0x7c8289e8, 0x7c828aa60, 0x7c828aa8, 0x7c828b08, 0x7c829090, 0x7c829b70, 0x7c829e50, 0x7c82a198, 0x7c82a1d8,  
0x7c82a298, 0x7c82a2d0, 0x7c82a640, 0x7c82da48, 0x7c82dac8 }

FACP: Length=268, Revision=5, Checksum=121,  
OEMID=AMI, OEM Table ID=0627, OEM Revision=0x1072009,  
Creator ID=AMI, Creator Revision=0x10013  
FACS=0x7fcc080, DSDT=0x7c81b1b8  
INT\_MODEL=APIC  
Preferred\_PM\_Profile=Desktop (1)  
SCI\_INT=9  
SMI\_CMD=0xb2, ACPI\_ENABLE=0xa0, ACPI\_DISABLE=0xa1, S4BIOS\_REQ=0x0  
PSTATE\_CNT=0x0  
PM1a\_EVT\_BLK=0x1800-0x1803  
PM1a\_CNT\_BLK=0x1804-0x1805  
PM2\_CNT\_BLK=0x1850-0x1850  
PM\_TMR\_BLK=0x1808-0x180b  
GPE0\_BLK=0x1820-0x182f  
P\_LVL2\_LAT=101 us, P\_LVL3\_LAT=1001 us  
FLUSH\_SIZE=1024, FLUSH\_STRIDE=16  
DUTY\_OFFSET=0, DUTY\_WIDTH=0  
DAY\_ALRM=13, MON\_ALRM=0, CENTURY=50  
IAPC\_BOOT\_ARCH={NO\_ASPM}  
Flags={WBINVD,C1\_SUPPORTED,C2\_MP\_SUPPORTED,SLEEP\_BUTTON,S4\_RTC\_WAKE,RESET\_REGISTER,PLATFORM\_CLOCK,S4\_RTC\_VALID,REMOTE\_POWER\_ON}  
RESET\_REG=0x539:0[8] (IO), RESET\_VALUE=0xf7  
FACS: Length=64, HwSig=0x0000000e, FirmWake\_Vec=0x00000000  
Global\_Lock=  
Flags=  
Version=2

DSDT: Length=55066, Revision=2, Checksum=4,  
OEMID=AMI, OEM Table ID=0627, OEM Revision=0x17,  
Creator ID=INTL, Creator Revision=0x20091112

APIC: Length=114, Revision=3, Checksum=126,  
OEMID=AMI, OEM Table ID=0627, OEM Revision=0x1072009,  
Creator ID=AMI, Creator Revision=0x10013  
Local APIC ADDR=0xfec00000  
Flags={PC-AT}  
Type=Local APIC  
ACPI CPU=1  
Flags={ENABLED}  
APIC ID=0  
Type=Local APIC  
ACPI CPU=2  
Flags={ENABLED}  
APIC ID=2  
Type=Local APIC  
ACPI CPU=3  
Flags={ENABLED}  
APIC ID=4  
Type=Local APIC  
ACPI CPU=4  
Flags={ENABLED}  
APIC ID=6  
Type=IO APIC  
APIC ID=2  
INT BASE=0  
ADDR=0x00000000fec00000  
Type=INT Override  
BUS=0  
IRQ=0  
INTR=2  
Flags={Polarity=conforming, Trigger=conforming}  
Type=INT Override  
BUS=0  
IRQ=9  
INTR=9  
Flags={Polarity=active-hi, Trigger=level}  
Type=Local APIC NMI  
ACPI CPU=ALL  
LINT Pin=1  
Flags={Polarity=active-hi, Trigger=edge}

FPDT: Length=68, Revision=1, Checksum=164,  
OEMID=AMI, OEM Table ID=0627, OEM Revision=0x1072009,  
Creator ID=AMI, Creator Revision=0x10013

LPIT: Length=92, Revision=1, Checksum=97,  
OEMID=AMI, OEM Table ID=0627, OEM Revision=0x0,  
Creator ID=AMI., Creator Revision=0x5

SSDT: Length=1411, Revision=1, Checksum=21,  
OEMID=PmRef, OEM Table ID=Cpu0Ist, OEM Revision=0x3000,  
Creator ID=INTL, Creator Revision=0x20120711

SSDT: Length=2781, Revision=1, Checksum=52,  
OEMID=PmRef, OEM Table ID=CpuPm, OEM Revision=0x3000,

```

Creator ID=INTL, Creator Revision=0x20120711
SSDT: Length=734, Revision=1, Checksum=194,
OEMID=PmRef, OEM Table ID=Cpu0Tst, OEM Revision=0x3000,
Creator ID=INTL, Creator Revision=0x20120711
SSDT: Length=840, Revision=1, Checksum=77,
OEMID=PmRef, OEM Table ID=ApTst, OEM Revision=0x3000,
Creator ID=INTL, Creator Revision=0x20120711
MCFG: Length=60, Revision=1, Checksum=63,
OEMID=AMI, OEM Table ID=0627, OEM Revision=0x1072009,
Creator ID=MSFT, Creator Revision=0x97
Base Address=0x00000000e0000000
Segment Group=0x0000
Start Bus=0
End Bus=255
PRAD: Length=190, Revision=2, Checksum=119,
OEMID=PRADID, OEM Table ID=PRADTID, OEM Revision=0x1,
Creator ID=MSFT, Creator Revision=0x3000001
HPET: Length=56, Revision=1, Checksum=244,
OEMID=AMI, OEM Table ID=0627, OEM Revision=0x1072009,
Creator ID=AMI., Creator Revision=0x5
HPET Number=0
ADDR=0xfed0000:0[64] (Memory) HW Rev=0x1
Comparators=7
Counter Size=1
Legacy IRQ routing capable={TRUE}
PCI Vendor ID=0x8086
Minimal Tick=14318
SSDT: Length=877, Revision=1, Checksum=62,
OEMID=SataRe, OEM Table ID=SataTabl, OEM Revision=0x1000,
Creator ID=INTL, Creator Revision=0x20120711
SSDT: Length=1313, Revision=1, Checksum=230,
OEMID=SaSsd, OEM Table ID=SaSsd, OEM Revision=0x3000,
Creator ID=INTL, Creator Revision=0x20091112
DMAR: Length=128, Revision=1, Checksum=72,
OEMID=INTEL, OEM Table ID=HSW, OEM Revision=0x1,
Creator ID=INTL, Creator Revision=0x1
Host Address Width=39
Flags={INTR_REMAP}
Type=DRHD
Length=32
Flags={INCLUDE_ALL}
Segment=0
Address=0xfed90000
Type=IOAPIC
Length=8
EnumerationId=2
StartBusNumber=240
Path={31:0}
Type=HPET
Length=8
EnumerationId=0
StartBusNumber=240
Path={15:0}
Type=RMRR
Length=48
Segment=0
BaseAddress=0x7f694000
LimitAddress=0x7f6a3fff
Type=PCI Endpoint Device
Length=8
EnumerationId=0
StartBusNumber=0
Path={29:0}
Type=PCI Endpoint Device
Length=8
EnumerationId=0
StartBusNumber=0
Path={26:0}
Type=PCI Endpoint Device
Length=8
EnumerationId=0
StartBusNumber=0
Path={20:0}
BERT: Length=48, Revision=1, Checksum=154,
OEMID=AMI, OEM Table ID=AMI BERT, OEM Revision=0x0,
Creator ID=AMI, Creator Revision=0x10013
ADB6 (Concatenate ("_PTS=", ToHexString (Arg0)))

```

# ネットワークインターフェースデータ詳細一覧

```
bge0: flags=8843<UP,BROADCAST,RUNNING,SIMPLEX,MULTICAST> metric 0 mtu 1500
options=c019b<RXCSUM, TXCSUM, VLAN_MTU, VLAN_HWTTAGGING, VLAN_HWCSUM, TSO4, VLAN_HWTSO, LINKSTATE>
ether 94:de:80:8e:98:ca
inet 192.168.1.40 netmask 0xfffff00 broadcast 192.168.1.255
nd6 options=29<PERFORMNUD,IFDISABLED,AUTO_LINKLOCAL>
media: Ethernet autoselect (1000baseT <full-duplex,master>)
status: active
bge1: flags=8802<BROADCAST,SIMPLEX,MULTICAST> metric 0 mtu 1500
options=c019b<RXCSUM, TXCSUM, VLAN_MTU, VLAN_HWTTAGGING, VLAN_HWCSUM, TSO4, VLAN_HWTSO, LINKSTATE>
ether 94:de:80:8e:98:cb
nd6 options=29<PERFORMNUD,IFDISABLED,AUTO_LINKLOCAL>
media: Ethernet autoselect
lo0: flags=8049<UP,LOOPBACK,RUNNING,MULTICAST> metric 0 mtu 16384
options=600003<RXCSUM, TXCSUM, RXCSUM_IPV6, TXCSUM_IPV6>
inet6 ::1 prefixlen 128
inet6 fe80::1%lo0 prefixlen 64 scopeid 0x3
inet 127.0.0.1 netmask 0xff000000
nd6 options=21<PERFORMNUD,AUTO_LINKLOCAL>
```

# デバイス認識詳細一覧

2	1 dr-xr-xr-x	11 root	wheel	512 Apr 19 23:08 /dev
105	0 lrwxr-xr-x	1 root	wheel	12 Apr 19 14:08 /dev/log ->
/var/run/log				
138	0 lrwxr-xr-x	1 root	wheel	11 Apr 19 23:08 /dev/dumpdev ->
/dev/ada0p3				
3	0 cr--r--r--	1 root	wheel	0x3 Apr 19 14:10 /dev/sndstat
4	0 crw-r-----	1 root	operator	0x4 Apr 19 14:10 /dev/geom.ctl
5	0 crw-----	1 root	wheel	0x5 Apr 19 14:10 /dev/devctl
6	0 crw-----	1 root	wheel	0x6 Apr 19 14:57 /dev/console
7	0 crw-----	1 root	wheel	0x7 Apr 19 14:10 /dev/kbdmux0
8	0 lrwxr-xr-x	1 root	wheel	7 Apr 19 14:10 /dev/kbd1 ->
kbdmux0				
9	0 crw-rw-rw-	1 root	wheel	0x9 Apr 19 14:10 /dev/tty
10	0 crw-r-----	1 root	kmem	0xa Apr 19 14:10 /dev/mem
11	0 crw-r-----	1 root	kmem	0xb Apr 19 14:10 /dev/kmem
12	0 crw-----	1 root	wheel	0xc Apr 19 14:10 /dev/fido
13	0 crw-----	1 root	wheel	0xd Apr 19 14:08 /dev/bpf
14	0 lrwxr-xr-x	1 root	wheel	3 Apr 19 14:10 /dev/bpf0 -> bpf
15	0 crw-rw-rw-	1 root	wheel	0xf Apr 19 14:55 /dev/null
16	0 crw-rw-rw-	1 root	wheel	0x10 Apr 19 14:10 /dev/zero
17	0 crw-r--r--	1 root	wheel	0x11 Apr 19 14:10 /dev/pci
18	0 crw-----	1 root	kmem	0x12 Apr 19 14:10 /dev/nfslock
19	0 crw-----	1 root	kmem	0x13 Apr 19 14:10 /dev/audit
20	0 crw-rw-rw-	1 root	wheel	0x14 Apr 19 23:08 /dev/random
21	0 lrwxr-xr-x	1 root	wheel	6 Apr 19 14:10 /dev/urandom ->
random				
130	1 dr-xr-xr-x	2 root	wheel	512 Apr 19 14:10 /dev/fd
22	0 crw-rw-rw-	1 root	wheel	0x16 Apr 19 14:10 /dev/fd/0
24	0 crw-rw-rw-	1 root	wheel	0x18 Apr 19 14:10 /dev/fd/1
26	0 crw-rw-rw-	1 root	wheel	0x1a Apr 19 14:10 /dev/fd/2
23	0 lrwxr-xr-x	1 root	wheel	4 Apr 19 14:10 /dev/stdin -> fd/0
25	0 lrwxr-xr-x	1 root	wheel	4 Apr 19 14:10 /dev/stdout -> fd/1
27	0 lrwxr-xr-x	1 root	wheel	4 Apr 19 14:10 /dev/stderr -> fd/2
28	0 crw-----	1 root	wheel	0x1c Apr 19 14:10 /dev/io
29	0 crw-rw-rw-	1 root	wheel	0x1d Apr 19 14:10 /dev/midistat
30	0 crw-----	1 root	wheel	0x1e Apr 19 14:10 /dev/systemouse
31	0 crw-----	1 root	wheel	0x1f Apr 19 14:10 /dev/klog
32	0 crw-r--r--	1 root	wheel	0x20 Apr 19 14:10 /dev/acpi
33	0 crw-rw----	1 root	operator	0x21 Apr 19 14:10 /dev/apmctl
34	0 crw-rw-r--	1 root	operator	0x22 Apr 19 14:10 /dev/apm
131	1 dr-xr-xr-x	2 root	wheel	512 Apr 19 14:10 /dev/led
35	0 crw-----	1 root	wheel	0x23 Apr 19 14:10 /dev/led
/ahci0.0.locate				
36	0 crw-----	1 root	wheel	0x24 Apr 19 14:10 /dev/led
/ahci0.0.fault				
37	0 crw-----	1 root	wheel	0x25 Apr 19 14:10 /dev/led
/ahci0.1.locate				
38	0 crw-----	1 root	wheel	0x26 Apr 19 14:10 /dev/led
/ahci0.1.fault				
39	0 crw-----	1 root	wheel	0x27 Apr 19 14:10 /dev/led
/ahci0.2.locate				
40	0 crw-----	1 root	wheel	0x28 Apr 19 14:10 /dev/led
/ahci0.2.fault				
41	0 crw-----	1 root	wheel	0x29 Apr 19 14:10 /dev/led
/ahci0.3.locate				
42	0 crw-----	1 root	wheel	0x2a Apr 19 14:10 /dev/led
/ahci0.3.fault				
43	0 crw-----	1 root	wheel	0x2b Apr 19 14:10 /dev/led
/ahci0.4.locate				
44	0 crw-----	1 root	wheel	0x2c Apr 19 14:10 /dev/led
/ahci0.4.fault				
45	0 crw-----	1 root	wheel	0x2d Apr 19 14:10 /dev/led
/ahci0.5.locate				
46	0 crw-----	1 root	wheel	0x2e Apr 19 14:10 /dev/led
/ahci0.5.fault				
47	0 crw-----	1 root	wheel	0x2f Apr 19 14:10 /dev/ttyu0
48	0 crw-----	1 root	wheel	0x30 Apr 19 14:10 /dev/ttyu0.init
49	0 crw-----	1 root	wheel	0x31 Apr 19 14:10 /dev/ttyu0.lock
50	0 crw-rw----	1 uucp	dialer	0x32 Apr 19 14:10 /dev/cuau0
51	0 crw-rw----	1 uucp	dialer	0x33 Apr 19 14:10 /dev/cuau0.init
52	0 crw-rw----	1 uucp	dialer	0x34 Apr 19 14:10 /dev/cuau0.lock
53	0 crw-----	1 root	wheel	0x35 Apr 19 14:10 /dev/ttyu1
54	0 crw-----	1 root	wheel	0x36 Apr 19 14:10 /dev/ttyu1.init
55	0 crw-----	1 root	wheel	0x37 Apr 19 14:10 /dev/ttyu1.lock
56	0 crw-rw----	1 uucp	dialer	0x38 Apr 19 14:10 /dev/cuau1
57	0 crw-rw----	1 uucp	dialer	0x39 Apr 19 14:10 /dev/cuau1.init
58	0 crw-rw----	1 uucp	dialer	0x3a Apr 19 14:10 /dev/cuau1.lock
59	0 crw-----	1 root	tty	0x3b Apr 19 14:57 /dev/ttyv0
60	0 crw-----	1 root	wheel	0x3c Apr 19 14:08 /dev/ttyv1
61	0 crw-----	1 root	wheel	0x3d Apr 19 14:08 /dev/ttyv2
62	0 crw-----	1 root	wheel	0x3e Apr 19 14:08 /dev/ttyv3
63	0 crw-----	1 root	wheel	0x3f Apr 19 14:08 /dev/ttyv4
64	0 crw-----	1 root	wheel	0x40 Apr 19 14:08 /dev/ttyv5
65	0 crw-----	1 root	wheel	0x41 Apr 19 14:08 /dev/ttyv6
66	0 crw-----	1 root	wheel	0x42 Apr 19 14:08 /dev/ttyv7



67	0 crw-----	1 root	wheel	0x43 Apr 19 14:10	/dev/ttyv8
68	0 crw-----	1 root	wheel	0x44 Apr 19 14:10	/dev/ttyv9
69	0 crw-----	1 root	wheel	0x45 Apr 19 14:10	/dev/ttyva
70	0 crw-----	1 root	wheel	0x46 Apr 19 14:10	/dev/ttyvb
71	0 crw-----	1 root	wheel	0x47 Apr 19 14:10	/dev/ttyvc
72	0 crw-----	1 root	wheel	0x48 Apr 19 14:10	/dev/ttyvd
73	0 crw-----	1 root	wheel	0x49 Apr 19 14:10	/dev/ttyve
74	0 crw-----	1 root	wheel	0x4a Apr 19 14:10	/dev/ttyvf
75	0 crw-----	1 root	wheel	0x4b Apr 19 14:10	/dev/consoclectl
76	0 crw-----	1 root	wheel	0x4c Apr 19 14:10	/dev/ufssuspend
78	0 crw-r--r--	1 root	operator	0x4e Apr 19 14:10	/dev/usbctl
79	0 crw-----	1 root	operator	0x4f Apr 19 14:10	/dev/xpt0
80	0 crw-----	1 root	wheel	0x50 Apr 19 14:10	/dev/mdctl
132	1 dr-xr-xr-x	2 root	wheel	512 Apr 19 14:10	/dev/usb
81	0 crw-----	1 root	operator	0x51 Apr 19 14:10	/dev/usb/0.1.0
83	0 crw-----	1 root	operator	0x53 Apr 19 14:10	/dev/usb/1.1.0
85	0 crw-----	1 root	operator	0x55 Apr 19 14:10	/dev/usb/2.1.0
87	0 crw-----	1 root	operator	0x57 Apr 19 14:10	/dev/usb/0.1.1
88	0 crw-----	1 root	operator	0x58 Apr 19 14:10	/dev/usb/2.1.1
89	0 crw-----	1 root	operator	0x59 Apr 19 14:10	/dev/usb/1.1.1
114	0 crw-----	1 root	operator	0x72 Apr 19 14:10	/dev/usb/2.2.0
116	0 crw-----	1 root	operator	0x74 Apr 19 14:10	/dev/usb/2.2.1
117	0 crw-----	1 root	operator	0x75 Apr 19 14:10	/dev/usb/1.2.0
119	0 crw-----	1 root	operator	0x77 Apr 19 14:10	/dev/usb/1.2.1
120	0 crw-----	1 root	operator	0x78 Apr 19 14:10	/dev/usb/1.3.0
122	0 crw-----	1 root	operator	0x7a Apr 19 14:10	/dev/usb/1.3.1
123	0 crw-----	1 root	operator	0x7b Apr 19 14:10	/dev/usb/1.3.2
126	0 crw-----	1 root	operator	0x7e Apr 19 14:10	/dev/usb/1.4.0
128	0 crw-----	1 root	operator	0x80 Apr 19 14:10	/dev/usb/1.4.3
129	0 crw-----	1 root	operator	0x81 Apr 19 14:10	/dev/usb/1.4.4
106	0 crw-----	1 root	operator	0x6a Apr 19 14:57	/dev/usb/2.3.0
109	0 crw-----	1 root	operator	0x6d Apr 19 14:57	/dev/usb/2.3.1
110	0 crw-----	1 root	operator	0x6e Apr 19 14:57	/dev/usb/2.4.0
133	0 crw-----	1 root	operator	0x85 Apr 19 14:57	/dev/usb/2.4.1
144	0 crw-----	1 root	operator	0x90 Apr 19 14:57	/dev/usb/2.5.0
146	0 crw-----	1 root	operator	0x92 Apr 19 14:57	/dev/usb/2.5.1
147	0 crw-----	1 root	operator	0x93 Apr 19 14:57	/dev/usb/2.5.2
82	0 lrwxr-xr-x	1 root	wheel	9 Apr 19 14:10	/dev/ugen0.1 ->
usb/0.1.0					
84	0 lrwxr-xr-x	1 root	wheel	9 Apr 19 14:10	/dev/ugen1.1 ->
usb/1.1.0					
86	0 lrwxr-xr-x	1 root	wheel	9 Apr 19 14:10	/dev/ugen2.1 ->
usb/2.1.0					
90	0 cr-----	1 root	wheel	0x5a Apr 19 14:10	/dev/devstat
91	0 crw-----	1 root	operator	0x5b Apr 19 14:10	/dev/pass0
92	0 crw-----	1 root	operator	0x5c Apr 19 14:10	/dev/pass1
93	0 crw-----	1 root	operator	0x5d Apr 19 14:10	/dev/pass2
94	0 crw-----	1 root	operator	0x5e Apr 19 14:10	/dev/ses0
95	0 crw-r-----	1 root	operator	0x5f Apr 19 14:10	/dev/ada0
96	0 lrwxr-xr-x	1 root	wheel	4 Apr 19 14:10	/dev/ada14 -> ada0
98	0 crw-r-----	1 root	operator	0x62 Apr 19 14:10	/dev/ada0p1
99	0 lrwxr-xr-x	1 root	wheel	6 Apr 19 14:10	/dev/ada14p1 ->
ada0p1					
100	0 crw-r-----	1 root	operator	0x64 Apr 19 23:08	/dev/ada0p2
101	0 lrwxr-xr-x	1 root	wheel	6 Apr 19 14:10	/dev/ada14p2 ->
ada0p2					
102	0 crw-r-----	1 root	operator	0x66 Apr 19 23:08	/dev/ada0p3
103	0 lrwxr-xr-x	1 root	wheel	6 Apr 19 14:10	/dev/ada14p3 ->
ada0p3					
104	0 crw-r-----	1 root	operator	0x68 Apr 19 14:10	/dev/cd0
134	1 dr-xr-xr-x	2 root	wheel	512 Apr 19 14:10	/dev/gptid
108	0 crw-r-----	1 root	operator	0x6c Apr 19 14:10	/dev/gptid
/9907b21b-c7cb-11e3-832a-94de808e98ca					
115	0 lrwxr-xr-x	1 root	wheel	9 Apr 19 14:10	/dev/ugen2.2 ->
usb/2.2.0					
118	0 lrwxr-xr-x	1 root	wheel	9 Apr 19 14:10	/dev/ugen1.2 ->
usb/1.2.0					
121	0 lrwxr-xr-x	1 root	wheel	9 Apr 19 14:10	/dev/ugen1.3 ->
usb/1.3.0					
124	0 crw-----	1 root	wheel	0x7c Apr 19 14:10	/dev/ukbd0
125	0 lrwxr-xr-x	1 root	wheel	5 Apr 19 14:10	/dev/kbd0 -> ukbd0
127	0 lrwxr-xr-x	1 root	wheel	9 Apr 19 14:10	/dev/ugen1.4 ->
usb/1.4.0					
112	0 crw-----	1 root	operator	0x70 Apr 19 23:08	/dev/pass3
113	0 crw-----	1 root	operator	0x71 Apr 19 23:08	/dev/pass4
136	0 crw-----	1 root	operator	0x88 Apr 19 23:08	/dev/pass5
137	0 crw-----	1 root	operator	0x89 Apr 19 23:08	/dev/pass6
139	0 crw-r-----	1 root	operator	0x8b Apr 19 23:08	/dev/cd1
140	0 crw-r-----	1 root	operator	0x8c Apr 19 23:08	/dev/da0
141	0 crw-r-----	1 root	operator	0x8d Apr 19 23:08	/dev/da1
142	0 crw-r-----	1 root	operator	0x8e Apr 19 23:08	/dev/da2
97	0 crw-r--r--	1 root	operator	0x61 Apr 19 14:08	/dev/ums0
107	0 lrwxr-xr-x	1 root	wheel	9 Apr 19 14:57	/dev/ugen2.3 ->
usb/2.3.0					
111	0 lrwxr-xr-x	1 root	wheel	9 Apr 19 14:57	/dev/ugen2.4 ->
usb/2.4.0					
135	0 crw-----	1 root	wheel	0x87 Apr 19 14:57	/dev/ukbd1
143	0 lrwxr-xr-x	1 root	wheel	5 Apr 19 14:57	/dev/kbd2 -> ukbd1
145	0 lrwxr-xr-x	1 root	wheel	9 Apr 19 14:57	/dev/ugen2.5 ->
usb/2.5.0					
148	0 crw-----	1 root	operator	0x94 Apr 19 14:57	/dev/pass7

149

0 crw-r----- 1 root

operator

0x95 Apr 19 14:57 /dev/da3

# 更新履歷

# 更新履歴

- 2014年04月19日 FreeBSD動作検証レポート2014年4月19日版作成

# FreeBSD動作検証レポート

## R110f-1E / 10.0-STABLE

### 対象ハードウェア

maker:NEC, product:Express5800/GT110f-S  
[N8100-1977Y], serial:3900316, version:FR1.3

### 対象OSバージョン

FreeBSD 10.0-STABLE #0 r262915: Sat Mar 8  
03:13:32 UTC 2014

2014年4月19日版

BSDコンサルティング株式会社

本文書の無断での引用・転載を禁止する

Contact us: [info@bsdconsulting.co.jp](mailto:info@bsdconsulting.co.jp)  
Copyright (c) 2014 BSD Consulting, Inc. All Rights Reserved.