

# FreeBSD動作検証レポート

## GT110e / 10.0-STABLE

### 対象ハードウェア

maker:NEC, product:Express5800/GT110e [N8100-1883Y],  
serial:2900380, version:FR1.0

### 対象OSバージョン

FreeBSD 10.0-STABLE #0 r262915: Sat Mar 8 03:13:32 UTC 2014

2014年4月19日版

BSDコンサルティング株式会社

本文書の無断での引用・転載を禁止する  
Contact us: [info@bsdconsulting.co.jp](mailto:info@bsdconsulting.co.jp)  
Copyright (c) 2014 BSD Consulting, Inc. All Rights Reserved.

# 動作検証レポート

# 要約

## ハードウェア基本情報

製品UUID	00a5b5b6-6bf9-e111-8001-902b34b834cd
製品データ	maker:NEC, product:Express5800/GT110e [N8100-1883Y], serial:2900380, version:FR1.0
筐体データ	maker:NEC, serial:04, tag:_____, version:856-061152-006
CPU	Intel(R) Xeon(R) CPU E3-1220 V2 @ 3.10GHz
MEMORY	8388608[KB]
BIOS	reldate:05/11/2012, vendor:American Megatrends Inc., version:4.6.0204
ACPI	oem:AMI , revision:2, rsdp:0x000f0450, rsdt:0xdd77e028, xsdt:0x00000000dd77e070
OS	FreeBSD 10.0-STABLE #0 r262915: Sat Mar 8 03:13:32 UTC 2014

## 基礎性能データ

メモリアクセス速度	27.616 GBi/sec
IPv4スタック処理速度	747.608 MBi/sec
IPv6スタック処理速度	609.425 MBi/sec

## 動作検証要約

FreeBSD 10.0-STABLE #0 r262915: Sat Mar 8 03:13:32 UTC 2014は、検証対象ハードウェア「maker:NEC, product:Express5800/GT110e [N8100-1883Y], serial:2900380, version:FR1.0」において正常に動作する。本機はFreeBSD 10.0-STABLE #0 r262915: Sat Mar 8 03:13:32 UTC 2014よりも前のバージョンでの使用は推奨できない。今後リリースが予定されているFreeBSD 10.1-RELEASEなどFreeBSD 10.0-STABLE #0 r262915: Sat Mar 8 03:13:32 UTC 2014以降のバージョンの使用が推奨される。

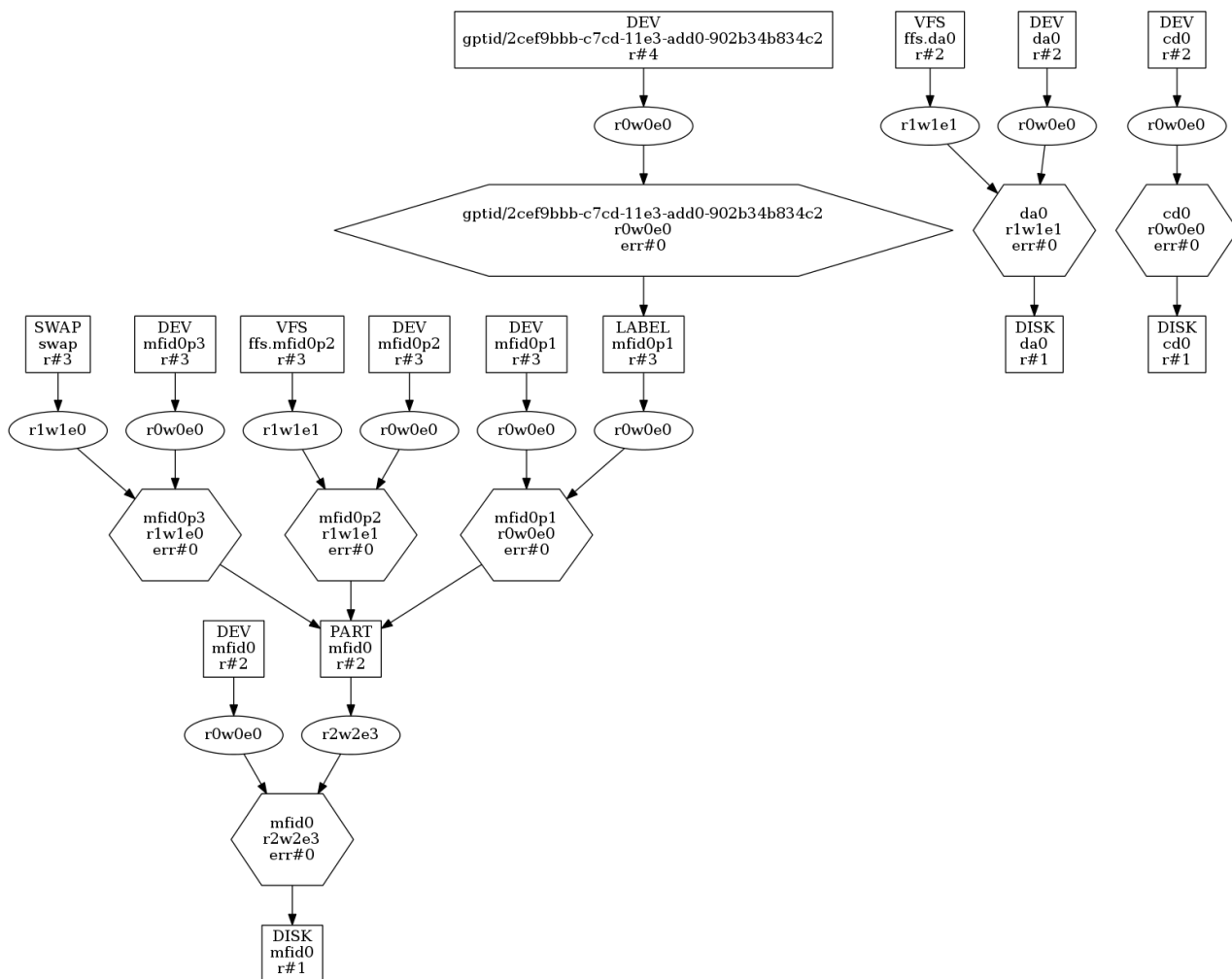
FreeBSD 10.1-RELEASEがリリースされるよりも前の段階でリリースバージョンでの使用が必要とされる場合、リリースバージョンでの使用が必要とされる場合、FreeBSD 10.0-RELEASEのユーザーランドにFreeBSD 10.0-STABLEのカーネルを組み合わせる方法を利用する方法を検討できる。本番環境での使用にあたっては実施前にその組み合わせでの負荷試験の実施が推奨される。

※ 長期間に渡る負荷試験の実施やカスタムカーネルの開発とご提供、データセンターまたはオンプレミスでのFreeBSDシステムの設計、セットアップ、デプロイなど詳しい業務に関しては弊社までお気軽にご相談ください。

## 互換情報

NEC Express5800/GT110e、NEC Express5800/GT110e-S、NEC Express5800/R110e-1Eは同じマザーボードを採用しており、本動作検証レポートの内容はNEC Express5800/GT110e-SおよびNEC Express5800/R110e-1Eにおいても有効。

# 検証機GEOMツリー



# 高負荷耐久試験

# 高負荷耐久試験

## 試験結果

検証対象ハードウェア(maker:NEC, product:Express5800/GT110e [N8100-1883Y], serial:2900380, version:FR1.0)は24時間高負荷耐久試験をクリアしており、所定の負荷に対して安定して動作するものとみられる。

不正処理高負荷耐久試験	クリア
通常ファイル作成高負荷耐久試験	クリア
FIFOファイル作成高負荷耐久試験	クリア
ディレクトリ作成高負荷耐久試験	クリア
ハードリンクファイル作成高負荷耐久試験	クリア
シンボリックリンクファイル作成高負荷耐久試験	クリア
ファイルロック機構高負荷耐久試験	クリア
メモリファイルマッピング機能高負荷耐久試験	クリア
ファイルシステム階層構造トラバース高負荷耐久試験	クリア
ファイルシステムパス解析高負荷耐久試験	クリア
ファイルシステムパスリネーム高負荷耐久試験	クリア
ファイルシステムライト・キャッシュリード高負荷耐久試験	クリア
ファイルシステムスワップ高負荷耐久試験	クリア
スレッド機構高負荷耐久試験	クリア
間接システムコール高負荷耐久試験	クリア
擬似ターミナル機構高負荷耐久試験	クリア
共有メモリ機構高負荷耐久試験	クリア
ネットワークソケット高負荷耐久試験	クリア
TCPスタック高負荷耐久試験	クリア
UDPスタック高負荷耐久試験	クリア

# 動作検証レポート

# 動作検証レポート

## ACPI認識データ

ACPI_APIC	Revision=3, OEMID=AMI, OEM_Table ID=05F6, OEM_Revision=0x1072009, Creator_ID=AMI, Creator_Revision=0x10013
ACPI_BERT	Revision=1, OEMID=AMI, OEM_Table ID=05F6, OEM_Revision=0x1072009, Creator_ID=AMI, Creator_Revision=0x10013
ACPI_DMAR	Revision=1, OEMID=AMI, OEM_Table ID=05F6, OEM_Revision=0x1, Creator_ID=INTL, Creator_Revision=0x1
ACPI_DSDT	Revision=2, OEMID=AMI, OEM_Table ID=05F6, OEM_Revision=0x10, Creator_ID=INTL, Creator_Revision=0x20100121
ACPI_FACP	Revision=4, OEMID=AMI, OEM_Table ID=05F6, OEM_Revision=0x1072009, Creator_ID=AMI, Creator_Revision=0x10013, FACS=0xdd7fcf80, DSDT=0xdd77e158, SMI_CMD=0xb2, ACPI_ENABLE=0xa0, ACPI_DISABLE=0xa1, S4BIOS_REQ=0x0, FLUSH_STRIDE=16, DUTY_WIDTH=3, RESET_VALUE=0xfe
ACPI_FACS	HwSig=0x00000000, Firm_Wake_Vec=0x00000000
ACPI_HPET	Revision=1, OEMID=AMI, OEM_Table ID=05F6, OEM_Revision=0x1072009, Creator_ID=AMI., Creator_Revision=0x4
ACPI_MCFG	Revision=1, OEMID=AMI, OEM_Table ID=05F6, OEM_Revision=0x1072009, Creator_ID=MSFT, Creator_Revision=0x97
ACPI_RSD_PTR	OEM=AMI, ACPI_Rev=2.0x_(2), XSDT=0xdd77e070
ACPI_XSDT	Revision=1, OEMID=AMI, OEM_Table ID=05F6, OEM_Revision=0x1072009, Creator_ID=AMI, Creator_Revision=0x10013
ACPI_SSDT_1	Length=258, Revision=1, Checksum=209, OEMID=AMI, OEM_Table ID=05F6, OEM_Revision=0x1, Creator_ID=MSFT, Creator_Revision=0x3000001

## MFIデバイス認識データ

アダプタ	mf0 Adapter:, Product Name: LSI MegaRAID SAS 9267-8i, Serial Number: SV23003428, Firmware: 23.1.1-0017, RAID Levels: JBOD, RAID0, RAID1, RAID5, RAID6, RAID10, RAID50, Battery Backup: present, NVRAM: 32K, Onboard Memory: 1024M, Minimum Stripe: 8K, Maximum Stripe: 1M
ドライバ	mf0 Physical Drives:, 8 ( 466G) ONLINE lt;ST500NM0011 N006 serial=Z1M0RE32gt; SATA E1:S0, 9 ( 466G) ONLINE lt;ST500NM0011 N006 serial=Z1M0RE42gt; SATA E1:S2, 10 ( 466G) ONLINE lt;ST500NM0011 N006 serial=Z1M0R602gt; SATA E1:S1
ボリューム	mf0 Volumes:, Id Size Level Stripe State Cache Name, mfid0 ( 930G) RAID-5 64K OPTIMAL Disabled lt;array0gt;
コンフィグ	mf0 Configuration: 1 arrays, 1 volumes, 0 spares, array 0 of 3 drives:, drive 8 ( 466G) ONLINE lt;ST500NM0011 N006 serial=Z1M0RE32gt; SATA, drive 10 ( 466G) ONLINE lt;ST500NM0011 N006 serial=Z1M0R602gt; SATA, drive 9 ( 466G) ONLINE lt;ST500NM0011 N006 serial=Z1M0RE42gt; SATA, volume mfid0 (930G) RAID-5 64K OPTIMAL lt;array0gt; spans:, array 0

※ 対象となるデバイスがmf0(4)ドライバを使用しないストレージ構成の場合、当項目は該当データなし。

## MPTデバイス認識データ

アダプタ	該当データなし
ドライバ	該当データなし
ボリューム	該当データなし
コンフィグ	該当データなし

※ 対象となるデバイスがmpt(4)ドライバを使用しないストレージ構成の場合、当項目は該当データなし。



## NIC認識データ

NIC	bge0, bge1
bge0	flags=8843<UP,BROADCAST,RUNNING,SIMPLEX,MULTICAST>, metric=0, mtu=1500, options=c019b<RXCSUM, TXCSUM, VLAN_MTU, VLAN_HWTAGGING, VLAN_HWCSUM, TSO4, VLAN_HWTSO, LINKSTATE>, ether=90:2b:34:b8:34:c2, inet=192.168.1.26 netmask 0xfffff00 broadcast 192.168.1.255, nd6_options=29<PERFORMNUD, IFDISABLED, AUTO_LINKLOCAL>, media=Ethernet autoselect (1000baseT <full-duplex, master>), status=active
bge1	flags=8802<BROADCAST,SIMPLEX,MULTICAST>, metric=0, mtu=1500, options=c019b<RXCSUM, TXCSUM, VLAN_MTU, VLAN_HWTAGGING, VLAN_HWCSUM, TSO4, VLAN_HWTSO, LINKSTATE>, ether=90:2b:34:b8:34:c3, nd6_options=29<PERFORMNUD, IFDISABLED, AUTO_LINKLOCAL>, media=Ethernet autoselect

## カーネルデバイス認識データ

acpi	apm	apmctl	audit
bpf	bpff0(bpf)	cd0	console
consolectl	ctty	cuau0	cuau0.init
cuau0.lock	cuau1	cuau1.init	cuau1.lock
devctl	devstat	dumpdev(mfid0p3)	fd
fd/0	fd/1	fd/2	fido
geom.ctl	gptid	gptid/2cef9bbb-c7cd-11e3-add0-902b34b834c2	io
kbd0(ukbd0)	kbd1(kbdmux0)	kbd2(ukbd1)	kbdmux0
klog	kmem	log(/var/run/log)	mdctl
megaraid_sas_ioctl_node(mfi0)	mem	mfi0	mfid0
mfid0p1	mfid0p2	mfid0p3	midistat
nfslock	null	pass0	pass1
pci	random	sndstat	stderr(fd/2)
stdin(fd/0)	stdout(fd/1)	sysmouse	ttyu0
ttyu0.init	ttyu0.lock	ttyu1	ttyu1.init
ttyu1.lock	ttyv0	ttyv1	ttyv2
ttyv3	ttyv4	ttyv5	ttyv6
ttyv7	ttyv8	ttyv9	ttyva
ttyvb	ttyvc	ttyvd	ttyve
ttyvf	ufssuspend	ugen0.1(usb/0.1.0)	ugen0.2(usb/0.2.0)
ugen0.3(usb/0.3.0)	ugen0.4(usb/0.4.0)	ugen0.5(usb/0.5.0)	ugen1.1(usb/1.1.0)
ugen1.2(usb/1.2.0)	ugen1.3(usb/1.3.0)	ukbd0	ukbd1
ums0	urandom(random)	usb	usb/0.1.0
usb/0.1.1	usb/0.2.0	usb/0.2.1	usb/0.3.0
usb/0.3.1	usb/0.4.0	usb/0.4.1	usb/0.5.0
usb/0.5.1	usb/0.5.2	usb/1.1.0	usb/1.1.1
usb/1.2.0	usb/1.2.1	usb/1.3.0	usb/1.3.1
usb/1.3.2	usbctl	xpt0	zero

## PCI認識データ

1	pci0:0:0:0(hostb0), class=HOST-PCI, vendor='Intel Corporation', device='Xeon E3-1200 v2/Ivy Bridge DRAM Controller'
2	pci0:0:1:0(pci1), class=PCI-PCI, vendor='Intel Corporation', device='Xeon E3-1200 v2/3rd Gen Core processor PCI Express Root Port'
3	pci0:0:6:0(pci2), class=PCI-PCI, vendor='Intel Corporation', device='Xeon E3-1200 v2/3rd Gen Core processor PCI Express Root Port'
4	pci0:0:22:0(none0), class=simple comms, vendor='Intel Corporation', device='6 Series/C200 Series Chipset Family MEI Controller'
5	pci0:0:22:1(none1), class=simple comms, vendor='Intel Corporation', device='6 Series/C200 Series Chipset Family MEI Controller'
6	pci0:0:26:0(ehci0), class=USB, vendor='Intel Corporation', device='6 Series/C200 Series Chipset Family USB Enhanced Host Controller'
7	pci0:0:28:0(pci3), class=PCI-PCI, vendor='Intel Corporation', device='6 Series/C200 Series Chipset Family PCI Express Root Port 1'
8	pci0:0:28:4(pci4), class=PCI-PCI, vendor='Intel Corporation', device='6 Series/C200 Series Chipset Family PCI Express Root Port 5'
9	pci0:0:28:6(pci5), class=PCI-PCI, vendor='Intel Corporation', device='6 Series/C200 Series Chipset Family PCI Express Root Port 7'
10	pci0:0:29:0(ehci1), class=USB, vendor='Intel Corporation', device='6 Series/C200 Series Chipset Family USB Enhanced Host Controller'
11	pci0:0:30:0(pci6), class=PCI-PCI, vendor='Intel Corporation', device='82801 PCI Bridge'
12	pci0:0:31:0(isab0), class=PCI-ISA, vendor='Intel Corporation', device='C204 Chipset Family LPC Controller'
13	pci0:0:31:2(atapci0), class=ATA, vendor='Intel Corporation', device='6 Series/C200 Series Chipset Family 4 port SATA IDE Controller'
14	pci0:0:31:3(none2), class=SMBus, vendor='Intel Corporation', device='6 Series/C200 Series Chipset Family SMBus Controller'
15	pci0:0:31:5(atapci1), class=ATA, vendor='Intel Corporation', device='6 Series/C200 Series Chipset Family 2 port SATA IDE Controller'
16	pci0:2:0:0(mfi0), class=RAID, vendor='LSI Logic / Symbios Logic', device='MegaRAID SAS 2208 [Thunderbolt]'
17	pci0:4:0:0(bge0), class=ethernet, vendor='Broadcom Corporation', device='NetXtreme BCM5718 Gigabit Ethernet PCIe'
18	pci0:4:0:1(bge1), class=ethernet, vendor='Broadcom Corporation', device='NetXtreme BCM5718 Gigabit Ethernet PCIe'
19	pci0:5:0:0(vgapci0), class=VGA, vendor='Matrox Electronics Systems Ltd.', device='MGA G200e [Pilot] ServerEngines (SEP1)'





## 動作検証レポート 詳細データ

## 詳細データ

### カーネル環境変数データ詳細一覧

```
LINES="24"
bootfile="kernel"
comconsole_pciudev=""
comconsole_port="1016"
comconsole_speed="9600"
console="vidconsole"
currdev="disk0p2:"
hint.acpi.0.oem="AMI"
hint.acpi.0.revision="2"
hint.acpi.0.rsdp="0x00f0450"
hint.acpi.0.rsdt="0xdd77e028"
hint.acpi.0.xsdt="0x0000000dd77e070"
hint.acpi.0.xsdt_length="36"
hint.atkbd.0.at="atkbd"
hint.atkbd.0.irq="1"
hint.atkbd.0.at="isa"
hint.atkbd.0.port="0x060"
hint.atrtc.0.at="isa"
hint.atrtc.0.irq="8"
hint.atrtc.0.port="0x70"
hint.attimer.0.at="isa"
hint.attimer.0.irq="0"
hint.attimer.0.port="0x40"
hint.fd.0.at="fdc0"
hint.fd.0.drive="0"
hint.fd.1.at="fdc0"
hint.fd.1.drive="1"
hint.fdc.0.at="isa"
hint.fdc.0.drq="2"
hint.fdc.0.irq="6"
hint.fdc.0.port="0x3f0"
hint.ppc.0.at="isa"
hint.ppc.0.irq="7"
hint.psm.0.at="atkbd"
hint.psm.0.irq="12"
hint.sc.0.at="isa"
hint.sc.0.flags="0x100"
hint.uart.0.at="isa"
hint.uart.0.flags="0x10"
hint.uart.0.irq="4"
hint.uart.0.port="0x3f8"
hint.uart.1.at="isa"
hint.uart.1.irq="3"
hint.uart.1.port="0x2f8"
hint.wbwd.0.at="isa"
interpret="OK"
kernel="kernel"
kernel[0]="kernel"
kernel[1]="kernel.old"
kernel_options=""
kernelname="/boot/kernel/kernel"
loaddev="disk0p2:"
loader_conf_files="/boot/device.hints /boot/loader.conf /boot/loader.conf.local"
mac_ifoff="NO"
module_path="/boot/kernel:/boot/modules"
smbios.bios.reldate="05/11/2012"
smbios.bios.vendor="American Megatrends Inc."
smbios.bios.version="4.6.0204"
smbios.chassis.maker="NEC"
smbios.chassis.serial="04"
smbios.chassis.tag=""
smbios.chassis.version="856-061152-006"
smbios.memory.enabled="8388608"
smbios.planar.maker="GIGABYTE"
smbios.planar.product="GA-6UASV"
smbios.planar.serial="0CH6N3400745"
smbios.planar.version="2.0A"
smbios.socket.enabled="1"
smbios.socket.populated="1"
smbios.system.maker="NEC"
smbios.system.product="Express5800/GT110e [N8100-1883Y]"
smbios.system.serial="2900380"
smbios.system.uuid="00a5b5b6-6bf9-e111-8001-902b34b834cd"
smbios.system.version="FR1.0"
smbios.version="2.7"
temp_options=""
vfs.root.mountfrom="ufs:/dev/mfid0p2"
vfs.root.mountfrom.options="rw"
```

# カーネルステートデータ詳細一覧

```
kern.ostype: FreeBSD
kern.osrelease: 10.0-STABLE
kern.osrevision: 199506
kern.version: FreeBSD 10.0-STABLE #0 r262915: Sat Mar 8 03:13:32 UTC 2014
  root@grind.freebsd.org:/usr/obj/usr/src/sys/GENERIC
kern.maxvnodes: 214294
kern.maxproc: 13556
kern.maxfiles: 261120
kern.argmax: 262144
kern.securelevel: -1
kern.hostname: GT110e.bsdconsulting.co.jp
kern.hostid: 3570907676
kern.clockrate: { hz = 1000, tick = 1000, profhz = 8128, stathz = 127 }
kern.posix1version: 200112
kern.ngroups: 1023
kern.job_control: 1
kern.saved_ids: 0
kern.boottime: { sec = 1397886221, usec = 789546 } Sat Apr 19 14:43:41 2014
kern.domainname:
kern.osreldate: 1000704
kern.bootfile: /boot/kernel/kernel
kern.maxfilesperproc: 235008
kern.maxprocperuid: 12200
kern.ipc.maxsockbuf: 2097152
kern.ipc.sockbuf_waste_factor: 8
kern.ipc.max_linkhdr: 16
kern.ipc.max_protohdr: 60
kern.ipc.max_hdr: 76
kern.ipc.max_datalen: 92
kern.ipc.maxmbufmem: 4161875968
kern.ipc.nmbclusters: 508042
kern.ipc.nmbjumbo9: 254020
kern.ipc.nmbjumbo9: 225795
kern.ipc.nmbjumbo16: 160344
kern.ipc.nmbufs: 3251475
kern.ipc.maxpipekva: 133693440
kern.ipc.pipekva: 20480
kern.ipc.piperefragetry: 0
kern.ipc.pipeallocfail: 0
kern.ipc.piperesizefail: 0
kern.ipc.piperesizeallowed: 1
kern.ipc.msgmax: 16384
kern.ipc.msgmni: 40
kern.ipc.msgmnb: 2048
kern.ipc.msgqql: 40
kern.ipc.msgssz: 8
kern.ipc.msseg: 2048
kern.ipc.semni: 50
kern.ipc.semns: 340
kern.ipc.semnu: 150
kern.ipc.semmsl: 340
kern.ipc.semopm: 100
kern.ipc.semume: 50
kern.ipc.semusz: 632
kern.ipc.semvmx: 32767
kern.ipc.semaem: 16384
kern.ipc.shmax: 536870912
kern.ipc.shmin: 1
kern.ipc.shmni: 192
kern.ipc.shmsegs: 128
kern.ipc.shmall: 131072
kern.ipc.shm_use_phys: 0
kern.ipc.shm_allow_removed: 0
kern.ipc.soacceptqueue: 128
kern.ipc.numopensockets: 22
kern.ipc.maxsockets: 261120
kern.ipc.sendfile.readahead: 1
kern.dummy: 0
kern.ps_strings: 140737488351200
kern.usrstack: 140737488351232
kern.logsigexit: 1
kern.iov_max: 1024
kern.hostuid: 00a5b5b6-6bf9-e111-8001-902b34b834cd
kern.cam.sort_io_queues: 1
kern.cam.boot_delay: 0
kern.cam.num_doneqs: 1
kern.cam.dflags: 0
kern.cam.debug_delay: 0
kern.cam.pmp.retry_count: 1
kern.cam.pmp.default_timeout: 30
kern.cam.pmp.hide_special: 1
kern.cam.cam_srch_hi: 0
kern.cam.scsi_delay: 5000
kern.cam.cd.changer.min_busy_seconds: 5
kern.cam.cd.changer.max_busy_seconds: 15
kern.cam.cd.poll_period: 3
kern.cam.cd.retry_count: 4
kern.cam.cd.timeout: 30000
kern.cam.cd.0.minimum_cmd_size: 6
kern.cam.ada.legacy_aliases: 1
kern.cam.ada.retry_count: 4
kern.cam.ada.default_timeout: 30
kern.cam.ada.send_ordered: 1
kern.cam.ada.spindown_shutdown: 1
kern.cam.ada.spindown_suspend: 1
kern.cam.ada.read_ahead: 1
kern.cam.ada.write_cache: 1
kern.cam.da.poll_period: 3
kern.cam.da.retry_count: 4
kern.cam.da.default_timeout: 60
kern.cam.da.send_ordered: 1
```

```
kern.cam.da.0.delete_method: NONE
kern.cam.da.0.delete_max: 65536
kern.cam.da.0.minimum_cmd_size: 10
kern.cam.da.0.sort_io_queue: -1
kern.cam.da.0.error_inject: 0
kern.cam.enc.emulate_array_devices: 1
kern.random.adaptors: yarrow,dummy
kern.random.active_adaptor: yarrow
kern.random.live_entropy_sources: Hardware, Intel IvyBridge+ RNG
kern.random.yarrow.gengateinterval: 10
kern.random.yarrow.bins: 10
kern.random.yarrow.fastthresh: 96
kern.random.yarrow.slowthresh: 128
kern.random.yarrow.slowoverthresh: 2
kern.random.sys_seeded: 1
kern.random.sys.harvest.ethernet: 1
kern.random.sys.harvest.point_to_point: 1
kern.random.sys.harvest.interrupt: 1
kern.random.sys.harvest.swi: 1
kern.disks: da0 cd0 mfid0
kern.geom.dev.delete_max_sectors: 262144
kern.geom.disk.mfid0.led:
kern.geom.disk.cd0.led:
kern.geom.disk.da0.led:
kern.geom.transient_maps: 1216
kern.geom.transient_map_retries: 10
kern.geom.transient_map_hard_failures: 0
kern.geom.transient_map_soft_failures: 0
kern.geom.inflight_transient_maps: 0
kern.geom.confxml: <mesh>
kern.geom.confdot: digraph geom {
kern.geom.conftxt: 0 DISK da0 15504900096 512 hd 255 sc 63
kern.geom.debugflags: 0
kern.geom.notaste: 0
kern.geom.collectstats: 1
kern.geom.label.debug: 0
kern.geom.label.ext2fs.enable: 1
kern.geom.label.iso9660.enable: 1
kern.geom.label.msdfs.enable: 1
kern.geom.label.ntfs.enable: 1
kern.geom.label.reiserfs.enable: 1
kern.geom.label.ufsid.enable: 1
kern.geom.label.ufs.enable: 1
kern.geom.label.gpt.enable: 1
kern.geom.label.gptid.enable: 1
kern.geom.label.disk_ident.enable: 1
kern.geom.part.check_integrity: 1
kern.geom.raid.enable: 1
kern.geom.raid.aggressive_spare: 0
kern.geom.raid.debug: 0
kern.geom.raid.read_err_thresh: 10
kern.geom.raid.start_timeout: 30
kern.geom.raid.clean_time: 5
kern.geom.raid.disconnect_on_failure: 1
kern.geom.raid.name_format: 0
kern.geom.raid.idle_threshold: 1000000
kern.geom.raid.legacy_aliases: 1
kern.geom.raid.ddf.enable: 1
kern.geom.raid.intel.enable: 1
kern.geom.raid.jmicron.enable: 1
kern.geom.raid.nvidia.enable: 1
kern.geom.raid.promise.enable: 1
kern.geom.raid.sii.enable: 1
kern.geom.raid.concat.enable: 1
kern.geom.raid.raid0.enable: 1
kern.geom.raid.raid1.rebuild_slab_size: 1048576
kern.geom.raid.raid1.rebuild_fair_io: 20
kern.geom.raid.raid1.rebuild_cluster_idle: 100
kern.geom.raid.raid1.rebuild_meta_update: 1024
kern.geom.raid.raid1.enable: 1
kern.geom.raid.raid1e.rebuild_slab_size: 1048576
kern.geom.raid.raid1e.rebuild_fair_io: 20
kern.geom.raid.raid1e.rebuild_cluster_idle: 100
kern.geom.raid.raid1e.rebuild_meta_update: 1024
kern.geom.raid.raid1e.enable: 1
kern.geom.raid.raid5.enable: 1
kern.elf64.fallback_brand: -1
kern.elf64.nxstack: 1
kern.elf32.fallback_brand: -1
kern.elf32.nxstack: 1
kern.elf32.read_exec: 0
kern.init_path: /sbin/init:/sbin/oinit:/sbin/init.bak:/rescue/init
kern.init_shutdown_timeout: 120
kern.acct_suspend: 2
kern.acct_resume: 4
kern.acct_chkfreq: 15
kern.acct_configured: 0
kern.acct_suspended: 0
kern.cp_time: 167 2 826 158 485392
kern.cp_times: 50 0 526 79 121291 35 1 98 41 121358 65 1 101 24 121342 17 0 101 14 121401
kern.console: ttyv0,/ttyv0,uart,
kern.consmute: 0
kern.consmgbuf_size: 8192
kern.constty_wakeups_per_second: 5
kern.openfiles: 72
kern.eventtimer.et.LAPIC.flags: 7
kern.eventtimer.et.LAPIC.frequency: 49887766
kern.eventtimer.et.LAPIC.quality: 600
kern.eventtimer.et.i8254.flags: 1
kern.eventtimer.et.i8254.frequency: 1193182
kern.eventtimer.et.i8254.quality: 100
kern.eventtimer.et.RTC.flags: 17
kern.eventtimer.et.RTC.frequency: 32768
kern.eventtimer.et.RTC.quality: 0
kern.eventtimer.et.HPET.flags: 7
kern.eventtimer.et.HPET.frequency: 14318180
kern.eventtimer.et.HPET.quality: 550
```



```

kern.eventtimer.et.HPET1.flags: 3
kern.eventtimer.et.HPET1.frequency: 14318180
kern.eventtimer.et.HPET1.quality: 440
kern.eventtimer.et.HPET2.flags: 3
kern.eventtimer.et.HPET2.frequency: 14318180
kern.eventtimer.et.HPET2.quality: 440
kern.eventtimer.et.HPET3.flags: 3
kern.eventtimer.et.HPET3.frequency: 14318180
kern.eventtimer.et.HPET3.quality: 440
kern.eventtimer.et.HPET4.flags: 3
kern.eventtimer.et.HPET4.frequency: 14318180
kern.eventtimer.et.HPET4.quality: 440
kern.eventtimer.choice: LAPIC(600) HPET(550) HPET1(440) HPET2(440) HPET3(440) HPET4(440) i8254(100) RTC(0)
kern.eventtimer.singlemul: 2
kern.eventtimer.idletick: 0
kern.eventtimer.timer: LAPIC
kern.eventtimer.periodic: 0
kern.kq_calloutmax: 4096
kern.stackprot: 7
kern.ps_arg_cache_limit: 256
kern.disallow_high_osrel: 0
kern.lastpid: 1273
kern.randompid: 0
kern.ktrace_genio_size: 4096
kern.ktrace.request_pool: 100
kern.module_path: /boot/kernel;/boot/modules
kern.malloc_count: 346
kern.ident: GENERIC
kern.compiler_version: FreeBSD clang version 3.3 (tags/RELEASE_33/final 183502) 20130610
kern.maxusers: 846
kern.supported_archs: amd64 i386
kern.confxt: options CONFIG_AUTOGENERATED
kern.features.scbus: 1
kern.features.compat_freebsd_32bit: 1
kern.features.ata_cam: 1
kern.features.nfscl: 1
kern.features.nfsd: 1
kern.features.geom_label: 1
kern.features.geom_part_bsd: 1
kern.features.geom_part_ebr: 1
kern.features.geom_part_ebr_compat: 1
kern.features.geom_part_gpt: 1
kern.features.geom_part_mbr: 1
kern.features.kposix_priority_scheduling: 1
kern.features.kdtrace_hooks: 1
kern.features.ktrace: 1
kern.features.compat_freebsd4: 1
kern.features.compat_freebsd5: 1
kern.features.compat_freebsd6: 1
kern.features.compat_freebsd7: 1
kern.features.hwpmc_hooks: 1
kern.features.stack: 1
kern.features.security_capability_mode: 1
kern.features.security_capabilities: 1
kern.features.process_descriptors: 1
kern.features.sysv_msg: 1
kern.features.sysv_sem: 1
kern.features.sysv_shm: 1
kern.features.posix_shm: 1
kern.features.inet: 1
kern.features.inet6: 1
kern.features.audit: 1
kern.features.security_mac: 1
kern.features.ffmpeg_snapshot: 1
kern.features.softupdates: 1
kern.features.ufs_acl: 1
kern.features.ufs_gjournal: 1
kern.features.ufs_quota: 1
kern.features.ufs_quota64: 1
kern.pid_max: 99999
kern.fallback_elf_brand: -1
kern.hwpmc.softevents: 16
kern.kstack_pages: 4
kern.panic_reboot_wait_time: 15
kern.sync_on_panic: 0
kern.shutdown.show_busybufs: 0
kern.shutdown.poweroff_delay: 5000
kern.shutdown.kproch_shutdown_wait: 60
kern.shutdown.dumpdevname: mfid0p3
kern.forcesigexit: 1
kern.sigqueue.max_pending_per_proc: 128
kern.sigqueue.preallocate: 1024
kern.sigqueue.overflow: 0
kern.sigqueue.alloc_fail: 0
kern.sugid_coredump: 0
kern.capmode_coredump: 0
kern.coredump: 1
kern.nodump_coredump: 0
kern.corefile: %N.core
kern.fscale: 2048
kern.timecounter.tc.i8254.mask: 65535
kern.timecounter.tc.i8254.counter: 11462
kern.timecounter.tc.i8254.frequency: 1193182
kern.timecounter.tc.i8254.quality: 0
kern.timecounter.tc.HPET.mask: 4294967295
kern.timecounter.tc.HPET.counter: 955268370
kern.timecounter.tc.HPET.frequency: 14318180
kern.timecounter.tc.HPET.quality: 950
kern.timecounter.tc.ACPI-fast.mask: 16777215
kern.timecounter.tc.ACPI-fast.counter: 940461
kern.timecounter.tc.ACPI-fast.frequency: 3579545
kern.timecounter.tc.ACPI-fast.quality: 900
kern.timecounter.tc.TSC-low.mask: 4294967295
kern.timecounter.tc.TSC-low.counter: 2148341155
kern.timecounter.tc.TSC-low.frequency: 1546520640
kern.timecounter.tc.TSC-low.quality: 1000
kern.timecounter.stepwarnings: 0

```

```

kern.timecounter.alloweddeviation: 5
kern.timecounter.hardware: TSC-low
kern.timecounter.choice: TSC-Low(1000) ACPI-fast(900) HPET(950) i8254(0) dummy(-1000000)
kern.timecounter.tick: 1
kern.timecounter.fast_gettime: 1
kern.timecounter.invariant_tsc: 1
kern.timecounter.smp_tsc: 1
kern.timecounter.smp_tsc_adjust: 0
kern.timecounter.tsc_shift: 1
kern.threads.max_threads_per_proc: 1500
kern.threads.max_threads_hits: 0
kern.ncallout: 18508
kern.callout_stat: 0
kern.sched.cpu_setsize: 8
kern.sched.preemption: 1
kern.sched.name: ULE
kern.sched.quantum: 94488
kern.sched.slice: 12
kern.sched.interact: 30
kern.sched.preempt_thresh: 80
kern.sched.static_boost: 152
kern.sched.idlespins: 10000
kern.sched.idlespinthresh: 157
kern.sched.affinity: 1
kern.sched.balance: 1
kern.sched.balance_interval: 127
kern.sched.steal_idle: 1
kern.sched.steal_thresh: 2
kern.sched.topology_spec: <groups>
kern.ccpu: 0
kern.devstat.numdevs: 5
kern.devstat.generation: 172
kern.devstat.version: 6
kern.hintmode: 0
kern.kobj_methodcount: 229
kern.log_wakeups_per_second: 5
kern.msgbuf_show_timestamp: 0
kern.hz: 1000
kern.nbuf: 52888
kern.nsbuf: 256
kern.msgbufsize: 98304
kern.maxswzone: 0
kern.maxbcache: 0
kern.bio_transient_maxcnt: 1024
kern.maxtsiz: 134217728
kern.dfltsiz: 34359738368
kern.maxdsiz: 34359738368
kern.dflssiz: 8388608
kern.maxssiz: 536870912
kern.sgrowsiz: 131072
kern.vm_guest: none
kern.log_console_output: 1
kern.log_console_add_linefeed: 0
kern.always_console_output: 0
kern.msgbuf:
kern.msgbuf_clear: 0
kern.smp_maxid: 3
kern.smp_maxcpus: 64
kern.smp_active: 1
kern.smp_disabled: 0
kern.smp_cpus: 4
kern.smp_topology: 0
kern.smp_forward_signal_enabled: 1
kern.tty_inq_flush_secure: 1
kern.tty_nin: 78
kern.tty_nout: 5083
kern.filedelay: 30
kern.dirdelay: 29
kern.metadelay: 28
kern.minvnodes: 53573
kern.chroot_allow_open_directories: 1
vm.vmtotal:
System wide totals computed every five seconds: (values in kilobytes)
Processes: (RUNQ: 1 Disk Wait: 0 Page Wait: 0 Sleep: 22)
Virtual Memory: (Total: 495824K Active: 473824K)
Real Memory: (Total: 87624K Active: 26868K)
Shared Virtual Memory: (Total: 16796K Active: 5796K)
Shared Real Memory: (Total: 5840K Active: 5352K)
Free Memory: 7980772K
vm.loadavg: { 0.04 0.07 0.09 }
vm.v_free_min: 12855
vm.v_free_target: 43332
vm.v_free_reserved: 2696
vm.v_inactive_target: 64998
vm.v_cache_min: 0
vm.v_cache_max: 0
vm.v_pageout_free_min: 34
vm.swap_enabled: 1
vm.md_malloc_wait: 0
vm.kmem_size: 8323751936
vm.kmem_size_min: 0
vm.kmem_size_max: 1319413950874
vm.kmem_size_scale: 1
vm.kmem_map_size: 17842176
vm.kmem_map_free: 8305909760
vm.swap_total: 4294967296
vm.swap_reserved: 262852608
vm.overcommit: 0
vm.swap_async_max: 4
vm.dnmax: 32
vm.nswapdev: 1
vm.zone_count: 100
vm.zone_warnings: 1
vm.kstack_cache_size: 128
vm.kstacks: 90
vm.swap_idle_threshold1: 2
vm.swap_idle_threshold2: 10

```

```

vm.exec_map_entries: 16
vm.min_kernel_address: 18446741874686296064
vm.max_kernel_address: 18446744073709547520
vm.v_free_severe: 7775
vm.stats.sys.v_swch: 138268
vm.stats.sys.v_trap: 92639
vm.stats.sys.v_syscall: 120752
vm.stats.sys.v_intr: 8815
vm.stats.sys.v_soft: 20621
vm.stats.vm.v_vm_faults: 85148
vm.stats.vm.v_io_faults: 827
vm.stats.vm.v_cow_faults: 36386
vm.stats.vm.v_cow_optim: 235
vm.stats.vm.v_zfod: 34701
vm.stats.vm.v_ozfod: 0
vm.stats.vm.v_swapin: 0
vm.stats.vm.v_swapout: 0
vm.stats.vm.v_swappgsin: 0
vm.stats.vm.v_swappgsout: 0
vm.stats.vm.v_vnodein: 859
vm.stats.vm.v_vnodeout: 0
vm.stats.vm.v_vnodepgsin: 5601
vm.stats.vm.v_vnodepgsout: 0
vm.stats.vm.v_intrans: 0
vm.stats.vm.v_reactivated: 0
vm.stats.vm.v_pdwakeups: 0
vm.stats.vm.v_pdpages: 4590
vm.stats.vm.v_tcached: 1696
vm.stats.vm.v_dfree: 0
vm.stats.vm.v_pfree: 50390
vm.stats.vm.v_tfree: 122812
vm.stats.vm.v_page_size: 4096
vm.stats.vm.v_page_count: 2032166
vm.stats.vm.v_free_reserved: 2696
vm.stats.vm.v_free_target: 43332
vm.stats.vm.v_free_min: 12855
vm.stats.vm.v_free_count: 1993497
vm.stats.vm.v_wire_count: 28551
vm.stats.vm.v_active_count: 4373
vm.stats.vm.v_inactive_target: 64998
vm.stats.vm.v_inactive_count: 3957
vm.stats.vm.v_cache_count: 1696
vm.stats.vm.v_cache_min: 0
vm.stats.vm.v_cache_max: 0
vm.stats.vm.v_pageout_free_min: 34
vm.stats.vm.v_interrupt_free_min: 2
vm.stats.vm.v_forks: 1054
vm.stats.vm.v_vforks: 203
vm.stats.vm.v_rforks: 0
vm.stats.vm.v_kthreads: 16
vm.stats.vm.v_forkpages: 38320
vm.stats.vm.v_vforkpages: 7218
vm.stats.vm.v_rforkpages: 0
vm.stats.vm.v_kthreadpages: 0
vm.stats.misc.zero_page_count: 42
vm.stats.misc.cnt_prezero: 0
vm.stats.object.collapses: 3362
vm.stats.object.bypasses: 426
vm.old_mlock: 0
vm.old_msync: 0
vm.boot_pages: 64
vm.tryrelock_restart: 0
vm.pageout_wakeup_thresh: 14135
vm.max_laundry: 32
vm.pageout_update_period: 600
vm.lowmem_period: 10
vm.swap_idle_enabled: 0
vm.defer_swapspace_pageouts: 0
vm.disable_swapspace_pageouts: 0
vm.pageout_lock_miss: 0
vm.max_wired: 670894
vm.phys_free:
DOMAIN 0:
FREE LIST 0:
FREE LIST 1:
vm.phys_segs:
SEGMENT 0:
start: 0x10000
end: 0x96000
domain: 0
free list: 0xffffffff814a3cb8
SEGMENT 1:
start: 0x100000
end: 0x200000
domain: 0
free list: 0xffffffff814a3cb8
SEGMENT 2:
start: 0x184a000
end: 0xdd736000
domain: 0
free list: 0xffffffff814a3910
SEGMENT 3:
start: 0xdd7a1000
end: 0xdd7a2000
domain: 0
free list: 0xffffffff814a3910
SEGMENT 4:
start: 0xdd863000
end: 0xdf7d4000
domain: 0
free list: 0xffffffff814a3910
SEGMENT 5:
start: 0xdf7df000
end: 0xdf800000
domain: 0
free list: 0xffffffff814a3910
SEGMENT 6:

```

```
start: 0x10000000
end: 0x212221000
domain: 0
free list: 0xffffffff814a3910
vm.ndomains: 1
vm.reserv.broken: 0
vm.reserv.freed: 4484
vm.reserv.partpopq:
-1: 150684k, 82
vm.reserv.reclaimed: 0
vm.idlezero_enable: 0
vm.pmap.pat_works: 1
vm.pmap.pg_ps_enabled: 1
vm.pmap.pcid_enabled: 0
vm.pmap.invpcid_works: 0
vm.pmap.pcid_save_cnt: 0
vm.pmap.pde.demotions: 43
vm.pmap.pde.mappings: 0
vm.pmap.pde.p_failures: 24
vm.pmap.pde.promotions: 69
vm.pmap.pdpe.demotions: 0
vm.kvm_size: 2199023251456
vm.kvm_free: 2189481209856
vfs.ufs.dirhash_minsize: 2560
vfs.ufs.dirhash_maxmem: 13529088
vfs.ufs.dirhash_mem: 52681
vfs.ufs.dirhash_docheck: 0
vfs.ufs.dirhash_lowmemcount: 0
vfs.ufs.dirhash_reclaimage: 60
vfs.ufs.rename_restarts: 0
vfs.nfs.downdelayinitial: 12
vfs.nfs.downdelayinterval: 30
vfs.nfs.bufpackets: 4
vfs.nfs.reconnects: 0
vfs.nfs.nfs3_jukebox_delay: 10
vfs.nfs.skip_wcc_data_onerr: 1
vfs.nfs.realign_test: 0
vfs.nfs.realign_count: 0
vfs.nfs.callback_addr:
vfs.nfs.debuglevel: 0
vfs.nfs.access_cache_timeout: 60
vfs.nfs.prime_access_cache: 0
vfs.nfs.commit_on_close: 0
vfs.nfs.clean_pages_on_close: 1
vfs.nfs.nfs_directio_enable: 0
vfs.nfs.nfs_keep_dirty_on_error: 0
vfs.nfs.nfs_directio_allow_mmap: 1
vfs.nfs.nfs_ip_paranoia: 1
vfs.nfs.diskless_valid: 0
vfs.nfs.diskless_rootpath:
vfs.nfs.iocmaxidle: 120
vfs.nfs.ioadmin: 0
vfs.nfs.iocmax: 20
vfs.nfs.defect: 0
vfs.devfs.generation: 144
vfs.devfs.rule_depth: 1
vfs.nfsd.disable_checkutf8: 0
vfs.nfsd.nfs_privport: 0
vfs.nfsd.server_min_nfsvers: 2
vfs.nfsd.server_max_nfsvers: 4
vfs.nfsd.async: 0
vfs.nfsd.mirrormnt: 1
vfs.nfsd.commit_blks: 0
vfs.nfsd.commit_miss: 0
vfs.nfsd.issue_delegations: 0
vfs.nfsd.enable_locallocks: 0
vfs.nfsd.tcphighwater: 0
vfs.nfsd.udphighwater: 500
vfs.nfsd.tcpcachetimeo: 43200
vfs.nfsd.cachetcp: 1
vfs.nfsd.minthreads: 1
vfs.nfsd.maxthreads: 1
vfs.nfsd.threads: 0
vfs.nfsd.request_space_used: 0
vfs.nfsd.request_space_used_highest: 0
vfs.nfsd.request_space_high: 47185920
vfs.nfsd.request_space_low: 31457280
vfs.nfsd.request_space_throttled: 0
vfs.nfsd.request_space_throttle_count: 0
vfs.nfsd.fha.enable: 1
vfs.nfsd.fha.bin_shift: 22
vfs.nfsd.fha.max_nfsds_per_fh: 8
vfs.nfsd.fha.max_reqs_per_nfsd: 0
vfs.nfsd.fha.fhe_stats: No file handle entries.
vfs.pfs.trace: 0
vfs.pfs.vncache.entries: 0
vfs.pfs.vncache.maxentries: 0
vfs.pfs.vncache.hits: 0
vfs.pfs.vncache.misses: 0
vfs.acl_nfs4_old_semantics: 0
vfs.vmioidrenable: 1
vfs.runningbufspace: 0
vfs.bufspace: 45252608
vfs.unmapped_bufspace: 37683200
vfs.maxbufspace: 866516992
vfs.bufmallospace: 0
vfs.maxallocbufspace: 43293081
vfs.lobufspace: 865796096
vfs.hibufspace: 865861632
vfs.bufreuscnt: 1492
vfs.bufreekvcnt: 111
vfs.bufdefragcnt: 0
vfs.lorunningspace: 9043968
vfs.hirunningspace: 13565952
vfs.dirtybufferflushes: 0
vfs.bdwriteskip: 0
vfs.altbufferflushes: 0
```

vfs.recursiveflushes: 372  
vfs.numdirtybuffers: 469  
vfs.lodirtybuffers: 6621  
vfs.hidirtybuffers: 13242  
vfs.dirtybufthresh: 11917  
vfs.numfreebuffers: 52417  
vfs.lofreebuffers: 2943  
vfs.hifreebuffers: 5886  
vfs.getnewbufcalls: 1524  
vfs.getnewbufrestarts: 0  
vfs.mappingrestarts: 0  
vfs.flushbufqtarget: 100  
vfs.notbufdflushes: 0  
vfs.barrierwrites: 4  
vfs.unmapped\_buf\_allowed: 1  
vfs.flushwithdeps: 0  
vfs.ncnegfactor: 16  
vfs.ncsizefactor: 2  
vfs.cache.numneg: 40  
vfs.cache.numcache: 938  
vfs.cache.numcalls: 45773  
vfs.cache.dothits: 942  
vfs.cache.dotdothits: 14  
vfs.cache.numchecks: 42328  
vfs.cache.nummiss: 2463  
vfs.cache.nummisszap: 32  
vfs.cache.numposzaps: 38  
vfs.cache.numposhits: 36664  
vfs.cache.numnegzaps: 430  
vfs.cache.numneghits: 5192  
vfs.cache.numupgrades: 1  
vfs.cache.numfullpathcalls: 16  
vfs.cache.numfullpathfail1: 0  
vfs.cache.numfullpathfail2: 0  
vfs.cache.numfullpathfail4: 0  
vfs.cache.numfullpathfound: 16  
vfs.write\_behind: 1  
vfs.read\_max: 64  
vfs.read\_min: 1  
vfs.typenumhash: 1  
vfs.lookup\_shared: 1  
vfs.usermount: 0  
vfs.numnodes: 1309  
vfs.wantfreenodes: 53573  
vfs.freenodes: 28  
vfs.vlru\_allow\_cache\_src: 0  
vfs.reassignbufcalls: 1901  
vfs.timestamp\_precision: 0  
vfs.worklist\_len: 403  
vfs.ffi.doasyncfree: 1  
vfs.ffi.dorealloclbks: 1  
vfs.ffi.compute\_summary\_at\_mount: 0  
net.local.stream.sendspace: 8192  
net.local.stream.recvspace: 8192  
net.local.dgram.maxdgram: 2048  
net.local.dgram.recvspace: 4096  
net.local.segpacket.maxseapacket: 8192  
net.local.segpacket.recvspace: 8192  
net.local.inflight: 0  
net.local.deferred: 0  
net.local.recycled: 0  
net.local.taskcount: 0  
net.inet.ip.portrange.lowfirst: 1023  
net.inet.ip.portrange.lowlast: 600  
net.inet.ip.portrange.first: 10000  
net.inet.ip.portrange.last: 65535  
net.inet.ip.portrange.hifirst: 49152  
net.inet.ip.portrange.hilast: 65535  
net.inet.ip.portrange.reservedhigh: 1023  
net.inet.ip.portrange.reservedlow: 0  
net.inet.ip.portrange.randomized: 1  
net.inet.ip.portrange.randomcps: 10  
net.inet.ip.portrange.randomtime: 45  
net.inet.ip.forwarding: 0  
net.inet.ip.redirect: 1  
net.inet.ip.ttl: 64  
net.inet.ip.rtxexpire: 3600  
net.inet.ip.rtmixexpire: 10  
net.inet.ip.rtmxocache: 128  
net.inet.ip.sourceroute: 0  
net.inet.ip.intr\_queue\_maxlen: 256  
net.inet.ip.intr\_queue\_drops: 0  
net.inet.ip.accept\_sourceroute: 0  
net.inet.ip.keepfaith: 0  
net.inet.ip.gifttl: 30  
net.inet.ip.no\_same\_prefix: 0  
net.inet.ip.random\_id\_period: 8192  
net.inet.ip.random\_id\_collisions: 0  
net.inet.ip.random\_id\_total: 0  
net.inet.ip.mcast.maxgrpsrc: 512  
net.inet.ip.mcast.maxsocksrc: 128  
net.inet.ip.mcast.loop: 1  
net.inet.ip.fastforwarding: 0  
net.inet.ip.sendsourcequench: 0  
net.inet.ip.random\_id: 0  
net.inet.ip.check\_interface: 0  
net.inet.ip.fragpackets: 0  
net.inet.ip.maxfragsperpacket: 16  
net.inet.ip.maxfragpackets: 15876  
net.inet.ip.process\_options: 1  
net.inet.icmp.maskrepl: 0  
net.inet.icmp.icmplim: 200  
net.inet.icmp.icmplim\_output: 1  
net.inet.icmp.maskfake: 0  
net.inet.icmp.log\_redirect: 0  
net.inet.icmp.reply\_src: 0  
net.inet.icmp.reply\_from\_interface: 0

```

net.inet.icmp.quotelen: 8
net.inet.icmp.bmcastecho: 0
net.inet.icmp.drop_redirect: 0
net.inet.igmp.recvifkludge: 1
net.inet.igmp.sendra: 1
net.inet.igmp.sendlocal: 1
net.inet.igmp.v1enable: 1
net.inet.igmp.v2enable: 1
net.inet.igmp.legacysupp: 0
net.inet.igmp.default_version: 3
net.inet.igmp.gsrdelay: 10
net.inet.tcp.rfc1323: 1
net.inet.tcp.mssdflt: 536
net.inet.tcp.keepidle: 7200000
net.inet.tcp.keepintvl: 75000
net.inet.tcp.sendspace: 32768
net.inet.tcp.recvspace: 65536
net.inet.tcp.keepinit: 75000
net.inet.tcp.delacktime: 100
net.inet.tcp.v6mssdflt: 1220
net.inet.tcp.cc.algorithm: newreno
net.inet.tcp.cc.available: newreno
net.inet.tcp.hostcache.cachelimit: 15360
net.inet.tcp.hostcache.hashsize: 512
net.inet.tcp.hostcache.bucketlimit: 30
net.inet.tcp.hostcache.count: 0
net.inet.tcp.hostcache.expire: 3600
net.inet.tcp.hostcache.prune: 300
net.inet.tcp.hostcache.purge: 0
net.inet.tcp.log_in_vain: 0
net.inet.tcp.blackhole: 0
net.inet.tcp.delayed_ack: 1
net.inet.tcp.drop_synfin: 0
net.inet.tcp.rfc3042: 1
net.inet.tcp.rfc3390: 1
net.inet.tcp.experimental.initscwnd10: 1
net.inet.tcp.rfc3465: 1
net.inet.tcp.abc_l_var: 2
net.inet.tcp.ecn.enable: 0
net.inet.tcp.ecn.maxretries: 1
net.inet.tcp.insecure_rst: 0
net.inet.tcp.recvbuf_auto: 1
net.inet.tcp.recvbuf_inc: 16384
net.inet.tcp.recvbuf_max: 2097152
net.inet.tcp.path_mtu_discovery: 1
net.inet.tcp.tso: 1
net.inet.tcp.sendbuf_auto: 1
net.inet.tcp.sendbuf_inc: 8192
net.inet.tcp.sendbuf_max: 2097152
net.inet.tcp.reass.maxsegments: 31800
net.inet.tcp.reass.cursegments: 0
net.inet.tcp.reass.overflow: 0
net.inet.tcp.sack.enable: 1
net.inet.tcp.sack.maxholes: 128
net.inet.tcp.sack.globalmaxholes: 65536
net.inet.tcp.sack.localmaxholes: 0
net.inet.tcp.minmss: 216
net.inet.tcp.log_debug: 0
net.inet.tcp.tcbhashsize: 65536
net.inet.tcp.do_tcpdrain: 1
net.inet.tcp.pcbcount: 3
net.inet.tcp.icmp_may_rst: 1
net.inet.tcp.isn_reseed_interval: 0
net.inet.tcp.soreceive_stream: 0
net.inet.tcp.synccookies: 1
net.inet.tcp.synccookies_only: 0
net.inet.tcp.syncache.bucketlimit: 30
net.inet.tcp.syncache.cachelimit: 15375
net.inet.tcp.syncache.count: 0
net.inet.tcp.syncache.hashsize: 512
net.inet.tcp.syncache.rexmtlimit: 3
net.inet.tcp.syncache.rst_on_sock_fail: 1
net.inet.tcp.msl: 30000
net.inet.tcp.rexmit_min: 30
net.inet.tcp.rexmit_slop: 200
net.inet.tcp.always_keepalive: 1
net.inet.tcp.fast_finwait2_recycle: 0
net.inet.tcp.finwait2_timeout: 60000
net.inet.tcp.keepcnt: 8
net.inet.tcp.rexmit_drop_options: 0
net.inet.tcp.per_cpu_timers: 0
net.inet.tcp.timer_race: 0
net.inet.tcp.maxtcptw: 27767
net.inet.tcp.nolocaltimewait: 0
net.inet.udp.checksum: 1
net.inet.udp.maxdgram: 9216
net.inet.udp.recvspace: 42080
net.inet.udp.log_in_vain: 0
net.inet.udp.blackhole: 0
net.inet.sctp.sendspace: 1864135
net.inet.sctp.recvspace: 1864135
net.inet.sctp.auto_asconf: 1
net.inet.sctp.ecn_enable: 1
net.inet.sctp.strict_sacks: 1
net.inet.sctp.peer_chkoh: 256
net.inet.sctp.maxburst: 4
net.inet.sctp.fr_maxburst: 4
net.inet.sctp.maxchunks: 63505
net.inet.sctp.tcbhashsize: 1024
net.inet.sctp.pcbhashsize: 256
net.inet.sctp.min_split_point: 2904
net.inet.sctp.chunkscale: 10
net.inet.sctp.delayed_sack_time: 200
net.inet.sctp.sack_freq: 2
net.inet.sctp.sys_resource: 1000
net.inet.sctp.asoc_resource: 10
net.inet.sctp.heartbeat_interval: 30000

```

```

net.inet.sctp.pmtu_raise_time: 600
net.inet.sctp.shutdown_guard_time: 180
net.inet.sctp.secret_lifetime: 3600
net.inet.sctp.rto_max: 60000
net.inet.sctp.rto_min: 1000
net.inet.sctp.rto_initial: 3000
net.inet.sctp.init_rto_max: 60000
net.inet.sctp.valid_cookie_life: 60000
net.inet.sctp.init_rtx_max: 8
net.inet.sctp.assoc_rtx_max: 10
net.inet.sctp.path_rtx_max: 5
net.inet.sctp.path_pf_threshold: 65535
net.inet.sctp.add_more_on_output: 1452
net.inet.sctp.incoming_streams: 2048
net.inet.sctp.outgoing_streams: 10
net.inet.sctp.cmt_on_off: 0
net.inet.sctp.nr_sack_on_off: 0
net.inet.sctp.cmt_use_dac: 0
net.inet.sctp.cwnd_maxburst: 1
net.inet.sctp.asconf_auth_nochk: 0
net.inet.sctp.auth_disable: 0
net.inet.sctp.nat_friendly: 1
net.inet.sctp.abc_l_var: 2
net.inet.sctp.max_chained_mbufs: 5
net.inet.sctp.do_sctp_drain: 1
net.inet.sctp.hb_max_burst: 4
net.inet.sctp.abort_at_limit: 0
net.inet.sctp.strict_data_order: 0
net.inet.sctp.min_residual: 1452
net.inet.sctp.max_retran_chunk: 30
net.inet.sctp.log_level: 0
net.inet.sctp.default_cc_module: 0
net.inet.sctp.default_ss_module: 0
net.inet.sctp.default_frag_interleave: 1
net.inet.sctp.mobility_base: 0
net.inet.sctp.mobility_fasthandoff: 0
net.inet.sctp.udp_tunneling_port: 0
net.inet.sctp.enable_sack_immediately: 0
net.inet.sctp.nat_friendly_init: 0
net.inet.sctp.vtag_time_wait: 60
net.inet.sctp.buffer_splitting: 0
net.inet.sctp.initial_cwnd: 3
net.inet.sctp.rttvar_bw: 4
net.inet.sctp.rttvar_rtt: 5
net.inet.sctp.rttvar_eqret: 0
net.inet.sctp.rttvar_steady_step: 20
net.inet.sctp.use_dccecc: 1
net.inet.sctp.blackhole: 0
net.inet.raw.maxdgram: 9216
net.inet.raw.recvspace: 9216
net.inet.accf.unloadable: 0
net.link.generic.system.ifcount: 3
net.link.ether.inet_max_age: 1200
net.link.ether.inet_maxtries: 5
net.link.ether.inet_uselooptest: 1
net.link.ether.inet_proxyall: 0
net.link.ether.inet_wait: 20
net.link.ether.inet_maxhold: 1
net.link.ether.inet_log_arp_wrong_iface: 1
net.link.ether.inet_log_arp_movements: 1
net.link.ether.inet_log_arp_permanent_modify: 1
net.link.ether.inet_allow_multicast: 0
net.link.ether.inet_max_log_per_second: 1
net.link.vlan.soft_pad: 0
net.link.gif.max_nesting: 1
net.link.gif.parallel_tunnels: 0
net.link.ifmaxlen: 50
net.link.log_link_state_change: 1
net.link.tun.devfs_cloning: 1
net.inet6.ip6.forwarding: 0
net.inet6.ip6.redirect: 1
net.inet6.ip6.hlim: 64
net.inet6.ip6.maxfragpackets: 127010
net.inet6.ip6.accept_rtadv: 0
net.inet6.ip6.keepfaith: 0
net.inet6.ip6.log_interval: 5
net.inet6.ip6.hdrnlimit: 15
net.inet6.ip6.dad_count: 1
net.inet6.ip6.auto_flowlabel: 1
net.inet6.ip6.defmcasthlim: 1
net.inet6.ip6.gifhlim: 30
net.inet6.ip6.kame_version: FreeBSD
net.inet6.ip6.use_deprecated: 1
net.inet6.ip6.rr_prune: 5
net.inet6.ip6.v6only: 1
net.inet6.ip6.rtmcache: 128
net.inet6.ip6.use_tempaddr: 0
net.inet6.ip6.temppltime: 86400
net.inet6.ip6.tempvltime: 604800
net.inet6.ip6.auto_linklocal: 1
net.inet6.ip6.prefer_tempaddr: 0
net.inet6.ip6.use_defaultzone: 0
net.inet6.ip6.maxfrags: 127010
net.inet6.ip6.mcast_pmtu: 0
net.inet6.ip6.no_radr: 0
net.inet6.ip6.norbit_raif: 0
net.inet6.ip6.rfc6204w3: 0
net.inet6.ip6.mcast_maxgrpsrc: 512
net.inet6.ip6.mcast_maxsocksrc: 128
net.inet6.ip6.mcast_loop: 1
net.inet6.ip6.deembed_scopeid: 1
net.inet6.icmp6.rediraccept: 1
net.inet6.icmp6.redirtimeout: 600
net.inet6.icmp6.nd6_prune: 1
net.inet6.icmp6.nd6_delay: 5
net.inet6.icmp6.nd6_umaxtries: 3
net.inet6.icmp6.nd6_mmaxtries: 3

```

```

net.inet6.icmp6.nd6_useloopback: 1
net.inet6.icmp6.nodeinfo: 3
net.inet6.icmp6.errppslimit: 100
net.inet6.icmp6.nd6_maxnudhint: 0
net.inet6.icmp6.nd6_debug: 0
net.inet6.icmp6.nd6_maxqueuelen: 1
net.inet6.icmp6.nodeinfo_olamcprefix: 1
net.inet6.icmp6.nd6_onlink_ns_rfc4861: 0
net.inet6.mld.gsrdelay: 10
net.inet6.mld.vienable: 1
net.inet6.mld.use_allow: 1
net.bpf.maxinsns: 512
net.bpf.zerocopy_enable: 0
net.bpf.optimize_writers: 0
net.bpf.bufsize: 4096
net.bpf.maxbufsize: 524288
net.ifdescr_maxlen: 1024
net.isr.dispatch: direct
net.isr.maxthreads: 1
net.isr.bindthreads: 0
net.isr.maxqlimit: 10240
net.isr.defaultqlimit: 256
net.isr.maxprot: 16
net.isr.numthreads: 1
net.raw.sendspace: 8192
net.raw.recvspace: 8192
net.fibs: 1
net.add_addr_allfibs: 1
net.my_fibnum: 0
net.route.netisr_maxqlen: 256
net.wlan.nol_timeout: 1800
net.wlan.cac_timeout: 60
net.wlan.debug: 0
net.wlan.ampdu_age: 500
net.wlan.rcv_bar: 1
net.wlan.addba_timeout: 250
net.wlan.addba_backoff: 10000
net.wlan.addba_maxtries: 3
net.wlan.hwmp.targetonly: 0
net.wlan.hwmp.pathlifetime: 5000
net.wlan.hwmp.maxpreq_retries: 3
net.wlan.hwmp.net_diameter_traversal_time: 512
net.wlan.hwmp.roottimeout: 5000
net.wlan.hwmp.rootint: 2000
net.wlan.hwmp.rannint: 1000
net.wlan.hwmp.rootconfint: 2000
net.wlan.hwmp.inact: 5000
net.wlan.mesh.gateint: 10000
net.wlan.mesh.retrytimeout: 40
net.wlan.mesh.holdingtimeout: 40
net.wlan.mesh.confirmtimeout: 40
net.wlan.mesh.backofftimeout: 5000
net.wlan.mesh.maxretries: 2
net.wlan.mesh.maxholding: 2
debug.acpi.acpi_ca_version: 20130823
debug.acpi.enable_debug_objects: 0
debug.acpi.interpreter_slack: 1
debug.acpi.reset_clock: 1
debug.acpi.suspend_bounce: 0
debug.acpi.cpu_unordered: 0
debug.acpi.ec.burst: 0
debug.acpi.ec.pollled: 0
debug.acpi.ec.timeout: 750
debug.acpi.batt.batt_sleep_ms: 0
debug.acpi.resume_beep: 0
debug.tpw: 0
debug.twi: 0
debug.mddebug: 0
debug.wpi: 0
debug.elf64_legacy_coredump: 0
debug.elf32_legacy_coredump: 0
debug.boothwta: 0
debug.bootverbose: 0
debug.cpubreq.lowest: 0
debug.cpubreq.verbose: 0
debug.fail_point.sysctl_running: off
debug.fail_point.buf_pressure: off
debug.fail_point.nlm_deny_grant: off
debug.sizeof.cdev: 288
debug.sizeof.cdev_priv: 376
debug.sizeof.g_class: 176
debug.sizeof.g_geom: 176
debug.sizeof.g_provider: 136
debug.sizeof.g_consumer: 96
debug.sizeof.g_bioq: 56
debug.sizeof.vnode: 472
debug.sizeof.proc: 1208
debug.sizeof.bio: 248
debug.sizeof.buf: 600
debug.sizeof.kinfo_proc: 1088
debug.sizeof.devstat: 288
debug.sizeof.namecache: 72
debug.adaptive_machine_arch: 1
debug.osd: 0
debug.rwlock.retry: 10
debug.rwlock.loops: 10000
debug.debugger_on_panic: 1
debug.trace_on_panic: 1
debug.ncores: 5
debug.sx.retries: 10
debug.sx.loops: 10000
debug.umtx.umtx_pi_allocated: 0
debug.clocktime: 0
debug.kdb.current:
debug.kdb.enter: 0
debug.kdb.panic: 0
debug.kdb.trap: 0

```



```
debug.kdb.trap_code: 0
debug.kdb.break_to_debugger: 0
debug.kdb.alt_break_to_debugger: 0
debug.rman_debug: 0
debug.io_size_max_clamp: 1
debug.devfs_io_size_max_clamp: 1
debug.nchash: 262143
debug.numneg: 40
debug.numcache: 938
debug.numcachehv: 99
debug.vfscache: 1
debug.disablecwd: 0
debug.disablefullpath: 0
debug.rush_requests: 0
debug.vnlru_nowhere: 0
debug.vn_io_fault_enable: 1
debug.vn_io_faults: 525
debug.if_tun_debug: 0
debug.nlm_debug: 0
debug.fscckcmds: 0
debug.dopersistence: 0
debug.snapdebug: 0
debug.collectsnapstats: 0
debug.softdep.total.pagedep: 74
debug.softdep.total.inodedep: 503
debug.softdep.total.bmsafemap: 488
debug.softdep.total.newblk: 1094
debug.softdep.total.alloaddir: 910
debug.softdep.total.indirdep: 2
debug.softdep.total.allocindir: 184
debug.softdep.total.freefrag: 4
debug.softdep.total.freeblks: 380
debug.softdep.total.freefile: 29
debug.softdep.total.diradd: 500
debug.softdep.total.mkdir: 110
debug.softdep.total.dirrem: 46
debug.softdep.total.newdirblk: 55
debug.softdep.total.freework: 380
debug.softdep.total.freedep: 0
debug.softdep.total.jaddrf: 610
debug.softdep.total.jremref: 58
debug.softdep.total.jmref: 0
debug.softdep.total.jnewblk: 1094
debug.softdep.total.jfreeblk: 0
debug.softdep.total.jfreefrag: 4
debug.softdep.total.jseg: 14
debug.softdep.total.jsegdep: 1766
debug.softdep.total.sbdep: 9
debug.softdep.total.jtrunc: 0
debug.softdep.total.jfsync: 0
debug.softdep.highuse.pagedep: 44
debug.softdep.highuse.inodedep: 397
debug.softdep.highuse.bmsafemap: 5
debug.softdep.highuse.newblk: 1
debug.softdep.highuse.alloaddir: 462
debug.softdep.highuse.indirdep: 2
debug.softdep.highuse.allocindir: 184
debug.softdep.highuse.freefrag: 2
debug.softdep.highuse.freeblks: 4
debug.softdep.highuse.freefile: 3
debug.softdep.highuse.diradd: 394
debug.softdep.highuse.mkdir: 82
debug.softdep.highuse.dirrem: 3
debug.softdep.highuse.newdirblk: 41
debug.softdep.highuse.freework: 4
debug.softdep.highuse.freedep: 0
debug.softdep.highuse.jaddrf: 473
debug.softdep.highuse.jremref: 3
debug.softdep.highuse.jmref: 0
debug.softdep.highuse.jnewblk: 462
debug.softdep.highuse.jfreeblk: 0
debug.softdep.highuse.jfreefrag: 1
debug.softdep.highuse.jseg: 8
debug.softdep.highuse.jsegdep: 1043
debug.softdep.highuse.sbdep: 1
debug.softdep.highuse.jtrunc: 0
debug.softdep.highuse.jfsync: 0
debug.softdep.current.pagedep: 44
debug.softdep.current.inodedep: 397
debug.softdep.current.bmsafemap: 3
debug.softdep.current.newblk: 0
debug.softdep.current.alloaddir: 461
debug.softdep.current.indirdep: 2
debug.softdep.current.allocindir: 184
debug.softdep.current.freefrag: 2
debug.softdep.current.freeblks: 0
debug.softdep.current.freefile: 0
debug.softdep.current.diradd: 394
debug.softdep.current.mkdir: 82
debug.softdep.current.dirrem: 0
debug.softdep.current.newdirblk: 41
debug.softdep.current.freework: 0
debug.softdep.current.freedep: 0
debug.softdep.current.jaddrf: 1
debug.softdep.current.jremref: 0
debug.softdep.current.jmref: 0
debug.softdep.current.jnewblk: 4
debug.softdep.current.jfreeblk: 0
debug.softdep.current.jfreefrag: 0
debug.softdep.current.jseg: 4
debug.softdep.current.jsegdep: 1042
debug.softdep.current.sbdep: 0
debug.softdep.current.jtrunc: 0
debug.softdep.current.jfsync: 0
debug.softdep.write.pagedep: 29
debug.softdep.write.inodedep: 214
debug.softdep.write.bmsafemap: 13
```

```
debug.softdep.write.newblk: 0
debug.softdep.write.allocdirect: 94
debug.softdep.write.indirdep: 0
debug.softdep.write.allocindir: 180
debug.softdep.write.freefrag: 0
debug.softdep.write.freeblks: 3
debug.softdep.write.freefile: 0
debug.softdep.write.diradd: 0
debug.softdep.write.mkdir: 0
debug.softdep.write.dirrem: 0
debug.softdep.write.newdirblk: 0
debug.softdep.write.freework: 0
debug.softdep.write.freedep: 0
debug.softdep.write.jaddrf: 0
debug.softdep.write.jmref: 0
debug.softdep.write.jmref: 0
debug.softdep.write.jnewblk: 0
debug.softdep.write.jfreeblk: 0
debug.softdep.write.jfreefrag: 0
debug.softdep.write.jseg: 14
debug.softdep.write.jsegdep: 1
debug.softdep.write.sbdep: 9
debug.softdep.write.jtrunc: 0
debug.softdep.write.jfsync: 0
debug.softdep.max_softdeps: 857176
debug.softdep.tickdelay: 2
debug.softdep.maxindirdeps: 50
debug.softdep.softdep_mounts: 1
debug.softdep.worklist_push: 0
debug.softdep.blk_limit_push: 0
debug.softdep.ino_limit_push: 0
debug.softdep.blk_limit_hit: 0
debug.softdep.ino_limit_hit: 0
debug.softdep.sync_limit_hit: 0
debug.softdep.indir_blk_ptrs: 0
debug.softdep.inode_bitmap: 6
debug.softdep.direct_blk_ptrs: 9
debug.softdep.dir_entry: 5
debug.softdep.jaddrf_rollback: 0
debug.softdep.jnewblk_rollback: 0
debug.softdep.journal_low: 0
debug.softdep.journal_min: 0
debug.softdep.journal_wait: 3
debug.softdep.jwait_filepage: 0
debug.softdep.jwait_freeblks: 0
debug.softdep.jwait_inode: 2
debug.softdep.jwait_newblk: 1
debug.softdep.cleanup_blkrequests: 0
debug.softdep.cleanup_inorequests: 0
debug.softdep.cleanup_high_delay: 0
debug.softdep.cleanup_retries: 0
debug.softdep.cleanup_failures: 0
debug.softdep.flushcache: 0
debug.bigcgs: 0
debug.dobkgrdwrite: 1
debug.dircheck: 0
debug.psm.loglevel: 0
debug.psm.hz: 20
debug.psm.errsecs: 2
debug.psm.errusecs: 0
debug.psm.secs: 0
debug.psm.usecs: 500000
debug.psm.pkterrthresh: 2
debug.vesa.shadow_rom: 0
debug.fdc.fifo: 8
debug.fdc.debugflags: 0
debug.fdc.retries: 10
debug.fdc.spec1: 175
debug.fdc.spec2: 16
debug.fdc.settle: 0
debug.x86bios.call: 0
debug.x86bios.int: 0
debug.hwpstate_verbose: 0
debug.minidump: 1
hw.machine: amd64
hw.model: Intel(R) Xeon(R) CPU E3-1220 V2 @ 3.10GHz
hw.ncpu: 4
hw.byteorder: 1234
hw.physmem: 8556400640
hw.usermem: 8439431168
hw.pagesize: 4096
hw.floatingpoint: 1
hw.machine_arch: amd64
hw.realmem: 8589934592
hw.aac.enable_msi: 1
hw.amr.force_sg32: 0
hw.an.an_dump: off
hw.an.an_cache_mode: dbm
hw.an.an_cache_mcastonly: 0
hw.an.an_cache_iponly: 1
hw.ata.ata_dma_check_80pin: 1
hw.ath.longcal: 30
hw.ath.shortcal: 100
hw.ath.resetcal: 1200
hw.ath.onical: 100
hw.ath.rxbuf: 512
hw.ath.txbuf: 512
hw.ath.txbuf_mgmt: 32
hw.ath.bstuck: 4
hw.bce.verbose: 1
hw.bce.tso_enable: 1
hw.bce.msi_enable: 1
hw.bce.rx_pages: 2
hw.bce.tx_pages: 2
hw.bce.hdr_split: 1
hw.bce.strict_rx_mtu: 0
hw.bce.tx_quick_cons_trip_int: 20
```

```
hw.bce.tx_quick_cons_trip: 20
hw.bce.tx_ticks_int: 80
hw.bce.tx_ticks: 80
hw.bce.rx_quick_cons_trip_int: 6
hw.bce.rx_quick_cons_trip: 6
hw.bce.rx_ticks_int: 18
hw.bce.rx_ticks: 18
hw.bge.allow_asf: 1
hw.cardbus.debug: 0
hw.cardbus.cis_debug: 0
hw.cs.ignore_checksum_failure: 0
hw.cs.recv_delay: 570
hw.em.tx_int_delay: 66
hw.em.rx_int_delay: 0
hw.em.tx_abs_int_delay: 66
hw.em.rx_abs_int_delay: 66
hw.em.rxd: 1024
hw.em.txd: 1024
hw.em.smart_pwr_down: 0
hw.em.sbp: 0
hw.em.enable_msix: 1
hw.em.rx_process_limit: 100
hw.em.eee_setting: 1
hw.igb.rxd: 1024
hw.igb.txd: 1024
hw.igb.enable_aim: 1
hw.igb.enable_msix: 1
hw.igb.max_interrupt_rate: 8000
hw.igb.buf_ring_size: 4096
hw.igb.header_split: 0
hw.igb.num_queues: 0
hw.igb.rx_process_limit: 100
hw.ix.enable_aim: 1
hw.ix.max_interrupt_rate: 31250
hw.ix.rx_process_limit: 256
hw.ix.tx_process_limit: 256
hw.ix.enable_msix: 1
hw.ix.num_queues: 0
hw.ix.txd: 2048
hw.ix.rxd: 2048
hw.malo.txcoalesce: 8
hw.malo.rxbuf: 256
hw.malo.rxquota: 256
hw.malo.txbuf: 256
hw.malo.pci.msi_disable: 0
hw.mfi.event_locale: 65535
hw.mfi.event_class: 0
hw.mfi.max_cmds: 128
hw.mfi.detect_jbod_change: 1
hw.mfi.polled_cmd_timeout: 60
hw.mfi.cmd_timeout: 30
hw.mfi.msi: 1
hw.mmc.debug: 0
hw.mwl.rxdesc: 256
hw.mwl.rxbuf: 640
hw.mwl.txbuf: 256
hw.mwl.txcoalesce: 8
hw.mwl.rxquota: 640
hw.mwl.rxdmalo: 3
hw.pccard.debug: 0
hw.pccard.cis_debug: 0
hw.cbb.start_memory: 2281701376
hw.cbb.start_16_io: 256
hw.cbb.start_32_io: 4096
hw.cbb.debug: 0
hw.pci.intr_mask: 57016
hw.pci.pd6722_vsense: 1
hw.pci.enable_io_modes: 1
hw.pci.reallocBars: 0
hw.pci.do_power_nodriver: 0
hw.pci.do_power_resume: 1
hw.pci.do_power_suspend: 1
hw.pci.enable_msi: 1
hw.pci.enable_msix: 1
hw.pci.honor_msi_blacklist: 1
hw.pci.usb_early_takeover: 1
hw.pci.clearBars: 0
hw.pci.clear_pcie: 0
hw.pci.default_vgapci_unit: 0
hw.pci.mcfg: 1
hw.pci.host_mem_start: 2147483648
hw.sdhci.debug: 0
hw.sdhci_pci.debug: 0
hw.snd.report_soft_formats: 1
hw.snd.report_soft_matrix: 1
hw.snd.latency: 5
hw.snd.latency_profile: 1
hw.snd.vpc_autoreset: 1
hw.snd.vpc_0db: 45
hw.snd.vpc_reset: 0
hw.snd.compat_linux_mmap: 0
hw.snd.feeder_eq_presets: PEQ:16000,0.2500,62,0.2500:-9,9,1.0:44100,48000,88200,96000,176400,192000
hw.snd.feeder_eq_exact_rate: 0
hw.snd.feeder_rate_presets: 100:8:0.85 100:36:0.92 100:164:0.97
hw.snd.feeder_rate_polyphase_max: 183040
hw.snd.feeder_rate_min: 1
hw.snd.feeder_rate_max: 2016000
hw.snd.feeder_rate_round: 25
hw.snd.feeder_rate_quality: 1
hw.snd.vpc_mixer_bypass: 1
hw.snd.verbose: 0
hw.snd.default_auto: -1
hw.snd.version: 2009061500/amd64
hw.snd.default_unit: -1
hw.snd.maxautovchans: 16
hw.midi.stat.verbose: 0
hw.midi.debug: 0
```

```

hw.midi.dumpraw: 0
hw.midi.instrhoff: 0
hw.midi.seq_debug: 0
hw.syscons.saver.keyborly: 1
hw.syscons.bell: 1
hw.syscons.kbd_reboot: 1
hw.syscons.kbd_debug: 1
hw.syscons.sc_no_suspend_vtswitch: 0
hw.broken_txfifo: 0
hw.usb.ehci.debug: 0
hw.usb.ehci.no_hs: 0
hw.usb.ehci.ioadbug: 0
hw.usb.ehci.lostintrbug: 0
hw.usb.ohci.debug: 0
hw.usb.uhci.debug: 0
hw.usb.uhci.loop: 0
hw.usb.xhci.streams: 0
hw.usb.xhci.debug: 0
hw.usb.xhci.xhci_port_route: 0
hw.usb.xhci.use_polling: 0
hw.usb.ctrl.debug: 0
hw.usb.no_boot_wait: 0
hw.usb.no_suspend_wait: 0
hw.usb.no_shutdown_wait: 0
hw.usb.umass.debug: 0
hw.usb.umass.throttle: 0
hw.usb.debug: 0
hw.usb.timings.port_reset_delay: 50
hw.usb.timings.port_root_reset_delay: 250
hw.usb.timings.port_reset_recovery: 250
hw.usb.timings.port_powerup_delay: 300
hw.usb.timings.port_resume_delay: 40
hw.usb.timings.set_address_settle: 10
hw.usb.timings.resume_delay: 250
hw.usb.timings.resume_wait: 50
hw.usb.timings.resume_recovery: 50
hw.usb.timings.extra_power_up_time: 20
hw.usb.dev.debug: 0
hw.usb.template: 0
hw.usb.usb_lang_id: 9
hw.usb.usb_lang_mask: 255
hw.usb.ugen.debug: 0
hw.usb.uhub.debug: 0
hw.usb.power_timeout: 30
hw.usb.proc.debug: 0
hw.usb.no_cs_fail: 0
hw.usb.full_ddesc: 0
hw.usb.ukbd.debug: 0
hw.usb.ukbd.no_leds: 0
hw.usb.ukbd.pollrate: 0
hw.usb.ums.debug: 0
hw.watchdog.wd_last_u: 0
hw.watchdog.wd_last_u_secs: 0
hw.wi.txerate: 0
hw.wi.debug: 0
hw.xe.debug: 0
hw.intr_storm_threshold: 1000
hw.availpages: 2088965
hw.pagesizes: 4096 2097152 0
hw.bus.devctl_disable: 0
hw.bus.devctl_queue: 1000
hw.clockrate: 3093
hw.instruction_sse: 1
hw.via_feature_rng: 0
hw.via_feature_xcrypt: 0
hw.psm.tap_enabled: -1
hw.psm.tap_threshold: 25
hw.psm.tap_timeout: 125000
hw.bxe.debug: 0
hw.bxe.interrupt_mode: 2
hw.bxe.queue_count: 4
hw.bxe.max_rx_bufs: 0
hw.bxe.hc_rx_ticks: 25
hw.bxe.hc_tx_ticks: 50
hw.bxe.rx_budget: -1
hw.bxe.max_aggregation_size: 0
hw.bxe.mrrs: -1
hw.bxe.autogreen: 0
hw.bxe.udp_rss: 0
hw.kbd.keymap_restrict_change: 0
hw.dmar.tbl_pagecnt: 0
hw.dmar.match_verbose: 0
hw.bsdma.total_bpages: 1219
hw.bsdma.zone0.total_bpages: 1219
hw.bsdma.zone0.free_bpages: 1214
hw.bsdma.zone0.reserved_bpages: 0
hw.bsdma.zone0.active_bpages: 5
hw.bsdma.zone0.total_bounced: 472
hw.bsdma.zone0.total_deferred: 0
hw.bsdma.zone0.lowaddr: 0xffffffff
hw.bsdma.zone0.alignment: 4096
hw.apic.enable_extint: 0
hw.mca.enabled: 1
hw.mca.amd10h_L1TP: 1
hw.mca.erratum383: 0
hw.mca.count: 0
hw.mca.interval: 3600
hw.mca.force_scan: 0
hw.mca.cmc_throttle: 60
hw.acpi.supported_sleep_state: S4 S5
hw.acpi.power_button_state: S5
hw.acpi.sleep_button_state: S4
hw.acpi.lid_switch_state: NONE
hw.acpi.standby_state: NONE
hw.acpi.suspend_state: NONE
hw.acpi.sleep_delay: 1
hw.acpi.s4bios: 0

```

```

hw.acpi.verbose: 0
hw.acpi.disable_on_reboot: 0
hw.acpi.handle_reboot: 1
hw.acpi.reset_video: 0
hw.acpi.cpu.cx_lowest: C1
machdep.acpi_timer_freq: 3579545
machdep.enable_panic_key: 0
machdep.rtc_save_period: 1800
machdep.adjkerntz: -32400
machdep.wall_cmos_clock: 1
machdep.disable_rtc_set: 0
machdep.disable_mtrrs: 0
machdep.idle_mwait: 1
machdep.idle_available: spin, mwait, hlt, acpi
machdep.idle: acpi
machdep.nkpt: 22
machdep.max_ldt_segment: 1024
machdep.kdb_on_nmi: 1
machdep.panic_on_nmi: 1
machdep.prot_fault_translation: 0
machdep.uprintf_signal: 0
machdep.acpi_root: 984144
machdep.i8254_freq: 1193182
machdep.disable_tsc: 0
machdep.disable_tsc_calibration: 0
machdep.tsc_freq: 3093041280
user.cs_path:
user.bc_base_max: 0
user.bc_dim_max: 0
user.bc_scale_max: 0
user.bc_string_max: 0
user.coll_weights_max: 0
user.expr_nest_max: 0
user.line_max: 0
user.re_dup_max: 0
user.posix2_version: 0
user.posix2_c_bind: 0
user.posix2_c_dev: 0
user.posix2_char_term: 0
user.posix2_fort_dev: 0
user.posix2_fort_run: 0
user.posix2_localedef: 0
user.posix2_sw_dev: 0
user.posix2_upe: 0
user.stream_max: 0
user.tzname_max: 0
p1003_lb.asynchronous_io: 0
p1003_lb.mapped_files: 200112
p1003_lb.memlock: 0
p1003_lb.memlock_range: 0
p1003_lb.memory_protection: 0
p1003_lb.message_passing: 0
p1003_lb.prioritized_io: 0
p1003_lb.priority_scheduling: 200112
p1003_lb.realtime_signals: 200112
p1003_lb.semaphores: 0
p1003_lb.fsync: 200112
p1003_lb.shared_memory_objects: 200112
p1003_lb.synchronized_io: 0
p1003_lb.timers: 200112
p1003_lb.aio_listio_max: -1
p1003_lb.aio_max: -1
p1003_lb.aio_prio_delta_max: -1
p1003_lb.delaytimer_max: 2147483647
p1003_lb.mq_open_max: 0
p1003_lb.pagesize: 4096
p1003_lb.rtsig_max: 62
p1003_lb.sem_nsems_max: 0
p1003_lb.sem_value_max: 0
p1003_lb.sigqueue_max: 128
p1003_lb.timer_max: 32
compat.ia32.maxdsiz: 536870912
compat.ia32.maxxsz: 67108864
compat.ia32.maxvmem: 0
security.jail.jailed: 0
security.jail.vnet: 0
security.jail.jail_max_af_ips: 255
security.jail.set_hostname_allowed: 1
security.jail.socket_unixiproute_only: 1
security.jail.sysvipc_allowed: 0
security.jail.allow_raw_sockets: 0
security.jail.chflags_allowed: 0
security.jail.mount_allowed: 0
security.jail.mount_devfs_allowed: 0
security.jail.mount_nullfs_allowed: 0
security.jail.mount_procfs_allowed: 0
security.jail.mount_tmpfs_allowed: 0
security.jail.mount_zfs_allowed: 0
security.jail.enforce_stats: 2
security.jail.devfs_ruleset: 0
security.jail.param.jid: 0
security.jail.param.parent: 0
security.jail.param.name: 256
security.jail.param.path: 1024
security.jail.param.securelevel: 0
security.jail.param.enforce_stats: 0
security.jail.param.devfs_ruleset: 0
security.jail.param.persist: 0
security.jail.param.dying: 0
security.jail.param.children.cur: 0
security.jail.param.children.max: 0
security.jail.param.host.: 0
security.jail.param.host.hostname: 256
security.jail.param.host.domainname: 256
security.jail.param.host.hostuid: 64
security.jail.param.host.hostid: 0
security.jail.param.cpuset.id: 0

```

```

security.jail.param.ip4.: 0
security.jail.param.ip4.saddrsel: 0
security.jail.param.ip6.: 0
security.jail.param.ip6.saddrsel: 0
security.jail.param.allow.set_hostname: 0
security.jail.param.allow.sysvipc: 0
security.jail.param.allow.raw_sockets: 0
security.jail.param.allow.chflags: 0
security.jail.param.allow.quotas: 0
security.jail.param.allow.socket_af: 0
security.jail.param.allow.mount.: 0
security.jail.param.allow.mount.devfs: 0
security.jail.param.allow.mount.nullfs: 0
security.jail.param.allow.mount.procfs: 0
security.jail.param.allow.mount.tmpfs: 0
security.jail.param.allow.mount.zfs: 0
security.bsd.map_at_zero: 0
security.bsd.suser_enabled: 1
security.bsd.unprivileged_mlock: 1
security.bsd.see_other_uids: 1
security.bsd.see_other_gids: 1
security.bsd.conservative_signals: 1
security.bsd.unprivileged_proc_debug: 1
security.bsd.unprivileged_idprio: 0
security.bsd.unprivileged_read_msgbuf: 1
security.bsd.hardlink_check_uid: 0
security.bsd.hardlink_check_gid: 0
security.bsd.unprivileged_get_quota: 0
security.bsd.stack_guard_page: 0
security.mac.version: 4
security.mac.max_slots: 4
security.mac.labeled: 0
security.mac.mmap_revocation: 1
security.mac.mmap_revocation_via_cow: 0
dev.xen.balloon.current: 0
dev.xen.balloon.target: 0
dev.xen.balloon.driver_pages: 0
dev.xen.balloon.hard_limit: 0
dev.xen.balloon.low_mem: 0
dev.xen.balloon.high_mem: 0
dev.xen.xsd_port: 0
dev.xen.xsd_kva: 0
dev.nexus.0.%driver: nexus
dev.nexus.0.%parent: root0
dev.ram.0.%desc: System RAM
dev.ram.0.%driver: ram
dev.ram.0.%parent: nexus0
dev.acpi.0.%desc: AMI 05F6
dev.acpi.0.%driver: acpi
dev.acpi.0.%parent: nexus0
dev.acpi_sysresource.0.%desc: System Resource
dev.acpi_sysresource.0.%driver: acpi_sysresource
dev.acpi_sysresource.0.%location: handle=_SB_.PCI0.MCH_
dev.acpi_sysresource.0.%pnpinfo: _HID=PNP0C01 _UID=10
dev.acpi_sysresource.0.%parent: acpi0
dev.acpi_sysresource.1.%desc: System Resource
dev.acpi_sysresource.1.%driver: acpi_sysresource
dev.acpi_sysresource.1.%location: handle=_SB_.PCI0.SBRG.SI01
dev.acpi_sysresource.1.%pnpinfo: _HID=PNP0C02 _UID=78
dev.acpi_sysresource.1.%parent: acpi0
dev.acpi_sysresource.2.%desc: System Resource
dev.acpi_sysresource.2.%driver: acpi_sysresource
dev.acpi_sysresource.2.%location: handle=_SB_.PCI0.SBRG.RMSC
dev.acpi_sysresource.2.%pnpinfo: _HID=PNP0C02 _UID=16
dev.acpi_sysresource.2.%parent: acpi0
dev.acpi_sysresource.3.%desc: System Resource
dev.acpi_sysresource.3.%driver: acpi_sysresource
dev.acpi_sysresource.3.%location: handle=_SB_.PCI0.SBRG.MBRD
dev.acpi_sysresource.3.%pnpinfo: _HID=PNP0C02 _UID=31
dev.acpi_sysresource.3.%parent: acpi0
dev.acpi_sysresource.4.%desc: System Resource
dev.acpi_sysresource.4.%driver: acpi_sysresource
dev.acpi_sysresource.4.%location: handle=_SB_.PCI0.PCH_
dev.acpi_sysresource.4.%pnpinfo: _HID=PNP0C01 _UID=455
dev.acpi_sysresource.4.%parent: acpi0
dev.acpi_sysresource.5.%desc: System Resource
dev.acpi_sysresource.5.%driver: acpi_sysresource
dev.acpi_sysresource.5.%location: handle=_SB_.PCI0.CWDT
dev.acpi_sysresource.5.%pnpinfo: _HID=INT3F0D _UID=0
dev.acpi_sysresource.5.%parent: acpi0
dev.acpi_sysresource.6.%desc: System Resource
dev.acpi_sysresource.6.%driver: acpi_sysresource
dev.acpi_sysresource.6.%location: handle=_SB_.PCI0.PEX6.PPF1
dev.acpi_sysresource.6.%pnpinfo: _HID=PNP0C01 _UID=241
dev.acpi_sysresource.6.%parent: acpi0
dev.acpi_sysresource.7.%desc: System Resource
dev.acpi_sysresource.7.%driver: acpi_sysresource
dev.acpi_sysresource.7.%location: handle=_SB_.RMEM
dev.acpi_sysresource.7.%pnpinfo: _HID=PNP0C01 _UID=1
dev.acpi_sysresource.7.%parent: acpi0
dev.acpi_sysresource.8.%desc: System Resource
dev.acpi_sysresource.8.%driver: acpi_sysresource
dev.acpi_sysresource.8.%location: handle=\OMSC
dev.acpi_sysresource.8.%pnpinfo: _HID=PNP0C02 _UID=3601
dev.acpi_sysresource.8.%parent: acpi0
dev.cpu.0.%desc: ACPI CPU
dev.cpu.0.%driver: cpu
dev.cpu.0.%location: handle=_PR_.P000
dev.cpu.0.%pnpinfo: _HID=none _UID=0
dev.cpu.0.%parent: acpi0
dev.cpu.0.%freq: 1400
dev.cpu.0.%freq_levels: 3101/69000 3100/69000 2900/63000 2700/57000 2500/52000 2300/47000 2100/42000 1900/37000 1700/32000 1600/30000 1400/26250 1200/22500 1000/18750
800/15000 600/11250 400/7500 200/3750
dev.cpu.0.cx_supported: C1/1/1 C2/3/80
dev.cpu.0.cx_lowest: C1
dev.cpu.0.cx_usage: 100.00% 0.00% last 13785us
dev.cpu.1.%desc: ACPI CPU

```

```

dev.cpu.1.%driver: cpu
dev.cpu.1.%location: handle=\PR_.P001
dev.cpu.1.%pnpinfo: _HID=none _UID=0
dev.cpu.1.%parent: acpi0
dev.cpu.1.cx_supported: C1/1/1 C2/3/80
dev.cpu.1.cx_lowest: C1
dev.cpu.1.cx_usage: 100.00% 0.00% last 8968us
dev.cpu.2.%desc: ACPI CPU
dev.cpu.2.%driver: cpu
dev.cpu.2.%location: handle=\PR_.P002
dev.cpu.2.%pnpinfo: _HID=none _UID=0
dev.cpu.2.%parent: acpi0
dev.cpu.2.cx_supported: C1/1/1 C2/3/80
dev.cpu.2.cx_lowest: C1
dev.cpu.2.cx_usage: 100.00% 0.00% last 17313us
dev.cpu.3.%desc: ACPI CPU
dev.cpu.3.%driver: cpu
dev.cpu.3.%location: handle=\PR_.P003
dev.cpu.3.%pnpinfo: _HID=none _UID=0
dev.cpu.3.%parent: acpi0
dev.cpu.3.cx_supported: C1/1/1 C2/3/80
dev.cpu.3.cx_lowest: C1
dev.cpu.3.cx_usage: 100.00% 0.00% last 30623us
dev.attimer.0.%desc: AT timer
dev.attimer.0.%driver: attimer
dev.attimer.0.%location: handle=\SB_.PCI0.SBRG.TMR_
dev.attimer.0.%pnpinfo: _HID=PNP0100 _UID=0
dev.attimer.0.%parent: acpi0
dev.atrtc.0.%desc: AT realtime clock
dev.atrtc.0.%driver: atrtc
dev.atrtc.0.%location: handle=\SB_.PCI0.SBRG.RTC0
dev.atrtc.0.%pnpinfo: _HID=PNP0B00 _UID=0
dev.atrtc.0.%parent: acpi0
dev.hpet.0.%desc: High Precision Event Timer
dev.hpet.0.%driver: hpet
dev.hpet.0.%location: handle=\SB_.PCI0.HPET
dev.hpet.0.%pnpinfo: _HID=PNP0103 _UID=0
dev.hpet.0.%parent: acpi0
dev.acpi_timer.0.%desc: 24-bit timer at 3.579545MHz
dev.acpi_timer.0.%driver: acpi_timer
dev.acpi_timer.0.%location: unknown
dev.acpi_timer.0.%pnpinfo: unknown
dev.acpi_timer.0.%parent: acpi0
dev.pci_link.0.%desc: ACPI PCI Link LNKA
dev.pci_link.0.%driver: pci_link
dev.pci_link.0.%location: handle=\SB_.LNKA
dev.pci_link.0.%pnpinfo: _HID=PNP0C0F _UID=1
dev.pci_link.0.%parent: acpi0
dev.pci_link.1.%desc: ACPI PCI Link LNKB
dev.pci_link.1.%driver: pci_link
dev.pci_link.1.%location: handle=\SB_.LNKB
dev.pci_link.1.%pnpinfo: _HID=PNP0C0F _UID=2
dev.pci_link.1.%parent: acpi0
dev.pci_link.2.%desc: ACPI PCI Link LNKC
dev.pci_link.2.%driver: pci_link
dev.pci_link.2.%location: handle=\SB_.LNKC
dev.pci_link.2.%pnpinfo: _HID=PNP0C0F _UID=3
dev.pci_link.2.%parent: acpi0
dev.pci_link.3.%desc: ACPI PCI Link LNKD
dev.pci_link.3.%driver: pci_link
dev.pci_link.3.%location: handle=\SB_.LNKD
dev.pci_link.3.%pnpinfo: _HID=PNP0C0F _UID=4
dev.pci_link.3.%parent: acpi0
dev.pci_link.4.%desc: ACPI PCI Link LNKE
dev.pci_link.4.%driver: pci_link
dev.pci_link.4.%location: handle=\SB_.LNKE
dev.pci_link.4.%pnpinfo: _HID=PNP0C0F _UID=5
dev.pci_link.4.%parent: acpi0
dev.pci_link.5.%desc: ACPI PCI Link LNKF
dev.pci_link.5.%driver: pci_link
dev.pci_link.5.%location: handle=\SB_.LNKF
dev.pci_link.5.%pnpinfo: _HID=PNP0C0F _UID=6
dev.pci_link.5.%parent: acpi0
dev.pci_link.6.%desc: ACPI PCI Link LNKG
dev.pci_link.6.%driver: pci_link
dev.pci_link.6.%location: handle=\SB_.LNKG
dev.pci_link.6.%pnpinfo: _HID=PNP0C0F _UID=7
dev.pci_link.6.%parent: acpi0
dev.pci_link.7.%desc: ACPI PCI Link LNKH
dev.pci_link.7.%driver: pci_link
dev.pci_link.7.%location: handle=\SB_.LNKH
dev.pci_link.7.%pnpinfo: _HID=PNP0C0F _UID=8
dev.pci_link.7.%parent: acpi0
dev.pci.0.%desc: ACPI Host-PCI bridge
dev.pci.0.%driver: pci
dev.pci.0.%location: handle=\SB_.PCI0
dev.pci.0.%pnpinfo: _HID=PNP0A08 _UID=0
dev.pci.0.%parent: acpi0
dev.pci.1.%desc: ACPI PCI-PCI bridge
dev.pci.1.%driver: pci
dev.pci.1.%location: slot=1 function=0 handle=\SB_.PCI0.P0P1
dev.pci.1.%pnpinfo: vendor=0x8086 device=0x0151 subvendor=0x1bcf subdevice=0x8007 class=0x060400
dev.pci.1.%parent: pci0
dev.pci.1.domain: 0
dev.pci.1.pribus: 0
dev.pci.1.secbus: 1
dev.pci.1.subbus: 1
dev.pci.1.wake: 0
dev.pci.2.%desc: ACPI PCI-PCI bridge
dev.pci.2.%driver: pci
dev.pci.2.%location: slot=6 function=0 handle=\SB_.PCI0.P0P4
dev.pci.2.%pnpinfo: vendor=0x8086 device=0x015d subvendor=0x1bcf subdevice=0x8007 class=0x060400
dev.pci.2.%parent: pci0
dev.pci.2.domain: 0
dev.pci.2.pribus: 0
dev.pci.2.secbus: 2
dev.pci.2.subbus: 2

```

```

dev.pci.2.wake: 0
dev.pci.3.%desc: ACPI PCI-PCI bridge
dev.pci.3.%driver: pci
dev.pci.3.%location: slot=28 function=0 handle=\_SB_.PCI0.PEX0
dev.pci.3.%npninfo: vendor=0x8086 device=0x1c10 subvendor=0x1bcf subdevice=0x8007 class=0x060400
dev.pci.3.%parent: pci0
dev.pci.3.domain: 0
dev.pci.3.pribus: 0
dev.pci.3.secbus: 3
dev.pci.3.subbus: 3
dev.pci.3.wake: 0
dev.pci.4.%desc: ACPI PCI-PCI bridge
dev.pci.4.%driver: pci
dev.pci.4.%location: slot=28 function=4 handle=\_SB_.PCI0.PEX4
dev.pci.4.%npninfo: vendor=0x8086 device=0x1c18 subvendor=0x1bcf subdevice=0x8007 class=0x060400
dev.pci.4.%parent: pci0
dev.pci.4.domain: 0
dev.pci.4.pribus: 0
dev.pci.4.secbus: 4
dev.pci.4.subbus: 4
dev.pci.4.wake: 0
dev.pci.5.%desc: ACPI PCI-PCI bridge
dev.pci.5.%driver: pci
dev.pci.5.%location: slot=28 function=6 handle=\_SB_.PCI0.PEX6
dev.pci.5.%npninfo: vendor=0x8086 device=0x1c1c subvendor=0x1bcf subdevice=0x8007 class=0x060400
dev.pci.5.%parent: pci0
dev.pci.5.domain: 0
dev.pci.5.pribus: 0
dev.pci.5.secbus: 5
dev.pci.5.subbus: 5
dev.pci.6.%desc: ACPI PCI-PCI bridge
dev.pci.6.%driver: pci
dev.pci.6.%location: slot=30 function=0 handle=\_SB_.PCI0.BR20
dev.pci.6.%npninfo: vendor=0x8086 device=0x244e subvendor=0x1bcf subdevice=0x8007 class=0x060401
dev.pci.6.%parent: pci0
dev.pci.6.domain: 0
dev.pci.6.pribus: 0
dev.pci.6.secbus: 6
dev.pci.6.subbus: 6
dev.pci.6.wake: 0
dev.pci.0.%desc: ACPI PCI bus
dev.pci.0.%driver: pci
dev.pci.0.%parent: pci0
dev.pci.1.%desc: ACPI PCI bus
dev.pci.1.%driver: pci
dev.pci.1.%parent: pci1
dev.pci.1.wake: 0
dev.pci.2.%desc: ACPI PCI bus
dev.pci.2.%driver: pci
dev.pci.2.%parent: pci2
dev.pci.2.wake: 0
dev.pci.3.%desc: ACPI PCI bus
dev.pci.3.%driver: pci
dev.pci.3.%parent: pci3
dev.pci.3.wake: 0
dev.pci.4.%desc: ACPI PCI bus
dev.pci.4.%driver: pci
dev.pci.4.%parent: pci4
dev.pci.4.wake: 0
dev.pci.5.%desc: ACPI PCI bus
dev.pci.5.%driver: pci
dev.pci.5.%parent: pci5
dev.pci.6.%desc: ACPI PCI bus
dev.pci.6.%driver: pci
dev.pci.6.%parent: pci6
dev.pci.6.wake: 0
dev.hostb.0.%desc: Host to PCI bridge
dev.hostb.0.%driver: hostb
dev.hostb.0.%location: slot=0 function=0
dev.hostb.0.%npninfo: vendor=0x8086 device=0x0158 subvendor=0x1bcf subdevice=0x8007 class=0x060000
dev.hostb.0.%parent: pci0
dev.mfi.0.%desc: ThunderBolt
dev.mfi.0.%driver: mfi
dev.mfi.0.%location: slot=0 function=0
dev.mfi.0.%npninfo: vendor=0x1000 device=0x005b subvendor=0x1000 subdevice=0x9267 class=0x010400
dev.mfi.0.%parent: pci2
dev.mfi.0.delete_busy_volumes: 0
dev.mfi.0.keep_deleted_volumes: 0
dev.ehci.0.%desc: EHCI (generic) USB 2.0 controller
dev.ehci.0.%driver: ehci
dev.ehci.0.%location: slot=26 function=0 handle=\_SB_.PCI0.USBE
dev.ehci.0.%npninfo: vendor=0x8086 device=0x1c2d subvendor=0x1bcf subdevice=0x8007 class=0x0c0320
dev.ehci.0.%parent: pci0
dev.ehci.0.wake: 0
dev.ehci.1.%desc: EHCI (generic) USB 2.0 controller
dev.ehci.1.%driver: ehci
dev.ehci.1.%location: slot=29 function=0 handle=\_SB_.PCI0.EUSB
dev.ehci.1.%npninfo: vendor=0x8086 device=0x1c26 subvendor=0x1bcf subdevice=0x8007 class=0x0c0320
dev.ehci.1.%parent: pci0
dev.ehci.1.wake: 0
dev.usbus.0.%driver: usb
dev.usbus.0.%parent: ehci0
dev.usbus.1.%driver: usb
dev.usbus.1.%parent: ehci1
dev.bge.0.%desc: Broadcom NetXtreme Gigabit Ethernet Controller, ASIC rev. 0x5717100
dev.bge.0.%driver: bge
dev.bge.0.%location: slot=0 function=0 handle=\_SB_.PCI0.PEX4.LAN1
dev.bge.0.%npninfo: vendor=0x14e4 device=0x1656 subvendor=0x1bcf subdevice=0x8007 class=0x020000
dev.bge.0.%parent: pci4
dev.bge.0.forced_collapse: 0
dev.bge.0.msi: 1
dev.bge.0.forced_udpcsum: 0
dev.bge.0.stats.FramesDroppedDueToFilters: 0
dev.bge.0.stats.DmaWriteQueueFull: 0
dev.bge.0.stats.DmaWriteHighPriQueueFull: 0
dev.bge.0.stats.NoMoreRxBDs: 0
dev.bge.0.stats.InputDiscards: 0

```



```

dev.bge.0.stats.InputErrors: 0
dev.bge.0.stats.RecvThresholdHit: 0
dev.bge.0.stats.rx.ifHCInOctets: 37178
dev.bge.0.stats.rx.Fragments: 0
dev.bge.0.stats.rx.UnicastPkts: 88
dev.bge.0.stats.rx.MulticastPkts: 53
dev.bge.0.stats.rx.BroadcastPkts: 85
dev.bge.0.stats.rx.FCSErrors: 0
dev.bge.0.stats.rx.AlignmentErrors: 0
dev.bge.0.stats.rx.xonPauseFramesReceived: 0
dev.bge.0.stats.rx.xoffPauseFramesReceived: 0
dev.bge.0.stats.rx.ControlFramesReceived: 0
dev.bge.0.stats.rx.xoffStateEntered: 0
dev.bge.0.stats.rx.FramesTooLong: 0
dev.bge.0.stats.rx.Jabbers: 0
dev.bge.0.stats.rx.UndersizePkts: 0
dev.bge.0.stats.tx.ifHCOutOctets: 10345
dev.bge.0.stats.tx.Collisions: 0
dev.bge.0.stats.tx.XonSent: 0
dev.bge.0.stats.tx.XoffSent: 0
dev.bge.0.stats.tx.InternalMacTransmitErrors: 0
dev.bge.0.stats.tx.SingleCollisionFrames: 0
dev.bge.0.stats.tx.MultipleCollisionFrames: 0
dev.bge.0.stats.tx.DeferredTransmissions: 0
dev.bge.0.stats.tx.ExcessiveCollisions: 0
dev.bge.0.stats.tx.LateCollisions: 0
dev.bge.0.stats.tx.UnicastPkts: 90
dev.bge.0.stats.tx.MulticastPkts: 0
dev.bge.0.stats.tx.BroadcastPkts: 6
dev.bge.0.wake: 0
dev.bge.1.%desc: Broadcom NetXtreme Gigabit Ethernet Controller, ASIC rev. 0x5717100
dev.bge.1.%driver: bge
dev.bge.1.%location: slot=0 function=1 handle=_SB_.PCI0.PEX4.LAN2
dev.bge.1.%pnpinfo: vendor=0x14e4 device=0x1656 subvendor=0x1bcf subdevice=0x8007 class=0x020000
dev.bge.1.%parent: pci4
dev.bge.1.forced_collapse: 0
dev.bge.1.msi: 1
dev.bge.1.forced_udpcsum: 0
dev.bge.1.stats.FramesDroppedDueToFilters: 0
dev.bge.1.stats.DmaWriteQueueFull: 0
dev.bge.1.stats.DmaWriteHighPriQueueFull: 0
dev.bge.1.stats.NoMoreRxBDs: 0
dev.bge.1.stats.InputDiscards: 0
dev.bge.1.stats.InputErrors: 0
dev.bge.1.stats.RecvThresholdHit: 0
dev.bge.1.stats.rx.ifHCInOctets: 0
dev.bge.1.stats.rx.Fragments: 0
dev.bge.1.stats.rx.UnicastPkts: 0
dev.bge.1.stats.rx.MulticastPkts: 0
dev.bge.1.stats.rx.BroadcastPkts: 0
dev.bge.1.stats.rx.FCSErrors: 0
dev.bge.1.stats.rx.AlignmentErrors: 0
dev.bge.1.stats.rx.xonPauseFramesReceived: 0
dev.bge.1.stats.rx.xoffPauseFramesReceived: 0
dev.bge.1.stats.rx.ControlFramesReceived: 0
dev.bge.1.stats.rx.xoffStateEntered: 0
dev.bge.1.stats.rx.FramesTooLong: 0
dev.bge.1.stats.rx.Jabbers: 0
dev.bge.1.stats.rx.UndersizePkts: 0
dev.bge.1.stats.tx.ifHCOutOctets: 0
dev.bge.1.stats.tx.Collisions: 0
dev.bge.1.stats.tx.XonSent: 0
dev.bge.1.stats.tx.XoffSent: 0
dev.bge.1.stats.tx.InternalMacTransmitErrors: 0
dev.bge.1.stats.tx.SingleCollisionFrames: 0
dev.bge.1.stats.tx.MultipleCollisionFrames: 0
dev.bge.1.stats.tx.DeferredTransmissions: 0
dev.bge.1.stats.tx.ExcessiveCollisions: 0
dev.bge.1.stats.tx.LateCollisions: 0
dev.bge.1.stats.tx.UnicastPkts: 0
dev.bge.1.stats.tx.MulticastPkts: 0
dev.bge.1.stats.tx.BroadcastPkts: 0
dev.bge.1.wake: 0
dev.miibus.0.%desc: MII bus
dev.miibus.0.%driver: miibus
dev.miibus.0.%parent: bge0
dev.miibus.1.%desc: MII bus
dev.miibus.1.%driver: miibus
dev.miibus.1.%parent: bge1
dev.brgphy.0.%desc: BCM5717C 1000BASE-T media interface
dev.brgphy.0.%driver: brgphy
dev.brgphy.0.%location: phyno=1
dev.brgphy.0.%pnpinfo: oui=0x1be9 model=0x20 rev=0x0
dev.brgphy.0.%parent: miibus0
dev.brgphy.1.%desc: BCM5717C 1000BASE-T media interface
dev.brgphy.1.%driver: brgphy
dev.brgphy.1.%location: phyno=2
dev.brgphy.1.%pnpinfo: oui=0x1be9 model=0x20 rev=0x0
dev.brgphy.1.%parent: miibus1
dev.vgapci.0.%desc: VGA-compatible display
dev.vgapci.0.%driver: vgapci
dev.vgapci.0.%location: slot=0 function=0
dev.vgapci.0.%pnpinfo: vendor=0x0102b device=0x0522 subvendor=0x1bcf subdevice=0x8007 class=0x030000
dev.vgapci.0.%parent: pci5
dev.isab.0.%desc: PCI-ISA bridge
dev.isab.0.%driver: isab
dev.isab.0.%location: slot=31 function=0 handle=_SB_.PCI0.SBRG
dev.isab.0.%pnpinfo: vendor=0x8086 device=0x1c54 subvendor=0x1bcf subdevice=0x8007 class=0x060100
dev.isab.0.%parent: pci0
dev.isa.0.%desc: ISA bus
dev.isa.0.%driver: isa
dev.isa.0.%parent: isab0
dev.atapci.0.%desc: Intel Cougar Point SATA300 controller
dev.atapci.0.%driver: atapci
dev.atapci.0.%location: slot=31 function=2 handle=_SB_.PCI0.SAT0
dev.atapci.0.%pnpinfo: vendor=0x8086 device=0x1c00 subvendor=0x1bcf subdevice=0x8007 class=0x01018f
dev.atapci.0.%parent: pci0

```

```

dev.atapci.1.%desc: Intel Cougar Point SATA300 controller
dev.atapci.1.%driver: atapci
dev.atapci.1.%location: slot=31 function=5 handle=\_SB_.PCI0.SAT1
dev.atapci.1.%pnpinfo: vendor=0x8086 device=0x1c08 subvendor=0x1bcf subdevice=0x8007 class=0x010185
dev.atapci.1.%parent: pci0
dev.ata.2.%desc: ATA channel
dev.ata.2.%driver: ata
dev.ata.2.%location: channel=0
dev.ata.2.%parent: atapci0
dev.ata.3.%desc: ATA channel
dev.ata.3.%driver: ata
dev.ata.3.%location: channel=1
dev.ata.3.%parent: atapci0
dev.ata.4.%desc: ATA channel
dev.ata.4.%driver: ata
dev.ata.4.%location: channel=0
dev.ata.4.%parent: atapci1
dev.ata.5.%desc: ATA channel
dev.ata.5.%driver: ata
dev.ata.5.%location: channel=1
dev.ata.5.%parent: atapci1
dev.acpi_button.0.%desc: Power Button
dev.acpi_button.0.%driver: acpi_button
dev.acpi_button.0.%location: handle=\_SB_.PWRB
dev.acpi_button.0.%pnpinfo: _HID=PNP0C0C _UID=170
dev.acpi_button.0.%parent: acpi0
dev.uart.0.%desc: 16550 or compatible
dev.uart.0.%driver: uart
dev.uart.0.%location: handle=\_SB_.PCI0.SBRG.UAR1
dev.uart.0.%pnpinfo: _HID=PNP0501 _UID=1
dev.uart.0.%parent: acpi0
dev.uart.0.%wake: 0
dev.uart.1.%desc: 16550 or compatible
dev.uart.1.%driver: uart
dev.uart.1.%location: handle=\_SB_.PCI0.SBRG.UAR2
dev.uart.1.%pnpinfo: _HID=PNP0501 _UID=2
dev.uart.1.%parent: acpi0
dev.uart.1.%wake: 0
dev.atdma.0.%desc: AT DMA controller
dev.atdma.0.%driver: atdma
dev.atdma.0.%location: handle=\_SB_.PCI0.SBRG.DMAD
dev.atdma.0.%pnpinfo: _HID=PNP0200 _UID=0
dev.atdma.0.%parent: acpi0
dev.fpuvnp.0.%desc: Legacy ISA coprocessor support
dev.fpuvnp.0.%driver: fpuvnp
dev.fpuvnp.0.%location: handle=\_SB_.PCI0.SBRG.COPR
dev.fpuvnp.0.%pnpinfo: _HID=PNP0C04 _UID=0
dev.fpuvnp.0.%parent: acpi0
dev.apic.0.%desc: APIC resources
dev.apic.0.%driver: apic
dev.apic.0.%parent: nexus0
dev.orm.0.%desc: ISA Option ROMs
dev.orm.0.%driver: orm
dev.orm.0.%parent: isa0
dev.sc.0.%desc: System console
dev.sc.0.%driver: sc
dev.sc.0.%parent: isa0
dev.vga.0.%desc: Generic ISA VGA
dev.vga.0.%driver: vga
dev.vga.0.%parent: isa0
dev.acpi_perf.0.%driver: acpi_perf
dev.acpi_perf.0.%parent: cpu0
dev.acpi_perf.1.%driver: acpi_perf
dev.acpi_perf.1.%parent: cpu1
dev.acpi_perf.2.%driver: acpi_perf
dev.acpi_perf.2.%parent: cpu2
dev.acpi_perf.3.%driver: acpi_perf
dev.acpi_perf.3.%parent: cpu3
dev.est.0.%desc: Enhanced SpeedStep Frequency Control
dev.est.0.%driver: est
dev.est.0.%parent: cpu0
dev.est.0.%freq_settings: 3101/69000 3100/69000 2900/63000 2700/57000 2500/52000 2300/47000 2100/42000 1900/37000 1700/32000 1600/30000
dev.est.1.%desc: Enhanced SpeedStep Frequency Control
dev.est.1.%driver: est
dev.est.1.%parent: cpu1
dev.est.1.%freq_settings: 3101/69000 3100/69000 2900/63000 2700/57000 2500/52000 2300/47000 2100/42000 1900/37000 1700/32000 1600/30000
dev.est.2.%desc: Enhanced SpeedStep Frequency Control
dev.est.2.%driver: est
dev.est.2.%parent: cpu2
dev.est.2.%freq_settings: 3101/69000 3100/69000 2900/63000 2700/57000 2500/52000 2300/47000 2100/42000 1900/37000 1700/32000 1600/30000
dev.est.3.%desc: Enhanced SpeedStep Frequency Control
dev.est.3.%driver: est
dev.est.3.%parent: cpu3
dev.est.3.%freq_settings: 3101/69000 3100/69000 2900/63000 2700/57000 2500/52000 2300/47000 2100/42000 1900/37000 1700/32000 1600/30000
dev.cpubfreq.0.%driver: cpufreq
dev.cpubfreq.0.%parent: cpu0
dev.cpubfreq.1.%driver: cpufreq
dev.cpubfreq.1.%parent: cpu1
dev.cpubfreq.2.%driver: cpufreq
dev.cpubfreq.2.%parent: cpu2
dev.cpubfreq.3.%driver: cpufreq
dev.cpubfreq.3.%parent: cpu3
dev.p4tcc.0.%desc: CPU Frequency Thermal Control
dev.p4tcc.0.%driver: p4tcc
dev.p4tcc.0.%parent: cpu0
dev.p4tcc.0.%freq_settings: 10000/-1 8750/-1 7500/-1 6250/-1 5000/-1 3750/-1 2500/-1 1250/-1
dev.p4tcc.1.%desc: CPU Frequency Thermal Control
dev.p4tcc.1.%driver: p4tcc
dev.p4tcc.1.%parent: cpu1
dev.p4tcc.1.%freq_settings: 10000/-1 8750/-1 7500/-1 6250/-1 5000/-1 3750/-1 2500/-1 1250/-1
dev.p4tcc.2.%desc: CPU Frequency Thermal Control
dev.p4tcc.2.%driver: p4tcc
dev.p4tcc.2.%parent: cpu2
dev.p4tcc.2.%freq_settings: 10000/-1 8750/-1 7500/-1 6250/-1 5000/-1 3750/-1 2500/-1 1250/-1
dev.p4tcc.3.%desc: CPU Frequency Thermal Control
dev.p4tcc.3.%driver: p4tcc
dev.p4tcc.3.%parent: cpu3

```

```
dev.p4tcc.3.freq_settings: 10000/-1 8750/-1 7500/-1 6250/-1 5000/-1 3750/-1 2500/-1 1250/-1
dev.uhub.0.%desc: Intel EHCI root HUB, class 9/0, rev 2.00/1.00, addr 1
dev.uhub.0.%driver: uhub
dev.uhub.0.%parent: usb0
dev.uhub.1.%desc: Intel EHCI root HUB, class 9/0, rev 2.00/1.00, addr 1
dev.uhub.1.%driver: uhub
dev.uhub.1.%parent: usb1
dev.uhub.2.%desc: vendor 0x8087 product 0x0024, class 9/0, rev 2.00/0.00, addr 2
dev.uhub.2.%driver: uhub
dev.uhub.2.%location: bus=1 hubaddr=1 port=0 devaddr=2 interface=0
dev.uhub.2.%pnpinfo: vendor=0x8087 product=0x0024 devclass=0x09 devsubclass=0x00 sernum="" release=0x0000 mode=host intclass=0x09 intsubclass=0x00 intprotocol=0x00
dev.uhub.2.%parent: uhub0
dev.uhub.3.%desc: vendor 0x8087 product 0x0024, class 9/0, rev 2.00/0.00, addr 2
dev.uhub.3.%driver: uhub
dev.uhub.3.%location: bus=1 hubaddr=1 port=1 devaddr=2 interface=0
dev.uhub.3.%pnpinfo: vendor=0x8087 product=0x0024 devclass=0x09 devsubclass=0x00 sernum="" release=0x0000 mode=host intclass=0x09 intsubclass=0x00 intprotocol=0x00
dev.uhub.3.%parent: uhub1
dev.uhub.4.%desc: Chicony Generic USB Hub, class 9/0, rev 1.10/1.02, addr 3
dev.uhub.4.%driver: uhub
dev.uhub.4.%location: bus=2 hubaddr=1 port=0 devaddr=3 interface=0
dev.uhub.4.%pnpinfo: vendor=0x046b product=0x0008 devclass=0x09 devsubclass=0x00 sernum="" release=0x0102 mode=host intclass=0x09 intsubclass=0x00 intprotocol=0x00
dev.uhub.4.%parent: uhub2
dev.mfid.0.%driver: mfid
dev.mfid.0.%parent: mfi0
dev.ukbd.0.%desc: Keyboard Interface
dev.ukbd.0.%driver: ukbd
dev.ukbd.0.%location: bus=2 hubaddr=1 port=1 devaddr=3 interface=0
dev.ukbd.0.%pnpinfo: vendor=0x046b product=0xff10 devclass=0x09 devsubclass=0x00 sernum="" release=0x0100 mode=host intclass=0x03 intsubclass=0x01 intprotocol=0x01
dev.ukbd.0.%parent: uhub3
dev.ukbd.1.%desc: Chicony PFU-65 USB Keyboard, class 0/0, rev 1.10/1.02, addr 4
dev.ukbd.1.%driver: ukbd
dev.ukbd.1.%location: bus=3 hubaddr=1 port=0 devaddr=4 interface=0
dev.ukbd.1.%pnpinfo: vendor=0x04fe product=0x0006 devclass=0x09 devsubclass=0x00 sernum="" release=0x0102 mode=host intclass=0x03 intsubclass=0x01 intprotocol=0x01
dev.ukbd.1.%parent: uhub4
dev.ums.0.%desc: Mouse Interface
dev.ums.0.%driver: ums
dev.ums.0.%location: bus=2 hubaddr=1 port=1 devaddr=3 interface=1
dev.ums.0.%pnpinfo: vendor=0x046b product=0xff10 devclass=0x09 devsubclass=0x00 sernum="" release=0x0100 mode=host intclass=0x03 intsubclass=0x01 intprotocol=0x02
dev.ums.0.%parent: uhub3
dev.ums.0.%parseinfo: i1: Z:r0, p40, s8; B1:r0, p0, s1; B2:r0, p1, s1; B3:r0, p2, s1;
dev.umass.0.%desc: UFD 2.0 Silicon-Power16G, class 0/0, rev 2.00/1.00, addr 5
dev.umass.0.%driver: umass
dev.umass.0.%location: bus=2 hubaddr=2 port=0 devaddr=5 interface=0
dev.umass.0.%pnpinfo: vendor=0x13fe product=0x4100 devclass=0x09 devsubclass=0x00 sernum="12090358056E600298333564202" release=0x0100 mode=host intclass=0x08
intsubclass=0x06 intprotocol=0x50
dev.umass.0.%parent: uhub2
hptmv.status: RocketRAID 18xx SATA Controller driver Version v1.16
```

# システム起動時メッセージ

```
Copyright (c) 1992-2014 The FreeBSD Project.
Copyright (c) 1979, 1980, 1983, 1986, 1988, 1989, 1991, 1992, 1993, 1994
    The Regents of the University of California. All rights reserved.
FreeBSD is a registered trademark of The FreeBSD Foundation.
FreeBSD 10.0-STABLE #0 r262915: Sat Mar  8 03:13:32 UTC 2014
root@grind.freebsd.org:/usr/obj/usr/src/sys/GENERIC amd64
FreeBSD clang version 3.3 (tags/RELEASE_33/final 183502) 20130610
CPU: Intel(R) Xeon(R) CPU E3-1220 V2 @ 3.10GHz (3093.04-MHz K8-class CPU)
  Origin = "GenuineIntel"  Id = 0x306a9  Family = 0x6  Model = 0x3a  Stepping = 9
  Features=0xbfebfbff<FPU,VME,DE,PSE,TSC,MSR,PAE,MCE,CX8,APIC,SEP,MTRR,PGE,MCA,CMOV,PAT,PSE36,CLFLUSH,DTS,ACPI,MMX,FXSR,SSE,SSE2,SS,HTT,TM,PBE>

Features2=0x7bae3fff<SSE3,PCLMULQDQ,DTES64,MON,DS_CPL,VMX,SMX,EST,TM2,SSSE3,CX16,xTPR,PDCM,PCID,SSE4.1,SSE4.2,x2APIC,POPCNT,TSCDLT,AESNI,XSAVE,OSXSAVE,AVX,F16C,RDRAND>
AMD Features=0x28100800<SYSCALL,NX,RDTSCP,LM>
AMD Features2=0x1<LAHF>
  Standard Extended Features=0x281<GSFSBASE,SMEP,ENHMOVSB>
  TSC: P-state invariant, performance statistics
real memory = 8589934592 (8192 MB)
avail memory = 8269807616 (7886 MB)
Event timer "LAPIC" quality 600
ACPI APIC Table: <AMI 05F6 >
FreeBSD/SMP: Multiprocessor System Detected: 4 CPUs
FreeBSD/SMP: 1 package(s) x 4 core(s)
cpu0 (BSP): APIC ID: 0
cpu1 (AP): APIC ID: 2
cpu2 (AP): APIC ID: 4
cpu3 (AP): APIC ID: 6
ioapic0 <Version 2.0> irqs 0-23 on motherboard
kbd1 at kbdmux0
random: <Software, Yarrow> initialized
acpi0: <AMI 05F6> on motherboard
acpi0: Power Button (fixed)
cpu0: <ACPI CPU> on acpi0
cpu1: <ACPI CPU> on acpi0
cpu2: <ACPI CPU> on acpi0
cpu3: <ACPI CPU> on acpi0
attimer0: <AT timer> port 0x40-0x43 on acpi0
Timecounter "i8254" frequency 1193182 Hz quality 0
Event timer "i8254" frequency 1193182 Hz quality 100
atrtc0: <AT realtime clock> port 0x70-0x71 on acpi0
Event timer "RTC" frequency 32768 Hz quality 0
hpet0: <High Precision Event Timer> iomem 0xfed00000-0xfed003ff irq 0,8 on acpi0
Timecounter "HPET" frequency 14318180 Hz quality 950
Event timer "HPET" frequency 14318180 Hz quality 550
Event timer "HPET1" frequency 14318180 Hz quality 440
Event timer "HPET2" frequency 14318180 Hz quality 440
Event timer "HPET3" frequency 14318180 Hz quality 440
Event timer "HPET4" frequency 14318180 Hz quality 440
Timecounter "ACPI-fast" frequency 3579545 Hz quality 900
acpi_timer0: <24-bit timer at 3.579545MHz> port 0x408-0x40b on acpi0
pcib0: <ACPI Host-PCI bridge> port 0xcfc8-0xcfff on acpi0
pci0: <ACPI PCI bus> on pcib0
pcib1: <ACPI PCI-PCI bridge> irq 16 at device 1.0 on pci0
pci1: <ACPI PCI bus> on pcib1
pcib2: <ACPI PCI-PCI bridge> irq 19 at device 6.0 on pci0
pci2: <ACPI PCI bus> on pcib2
mfi0: <ThunderBolt> port 0xe000-0xe0ff mem 0xfb960000-0xfb963fff,0xfb900000-0xfb93ffff irq 19 at device 0.0 on pci2
mfi0: Using MSI
mfi0: Megaraid SAS driver Ver 4.23
mfi0: FW MaxCmds = 1008, limiting to 128
mfi0: MaxCmd = 1008, Drv MaxCmd = 128, MaxSgl = 70, state = 0xb75003f0
pci0: <simple comms> at device 22.0 (no driver attached)
pci0: <simple comms> at device 22.1 (no driver attached)
ehci0: <EHCI (generic) USB 2.0 controller> mem 0xfba02000-0xfba023ff irq 16 at device 26.0 on pci0
usb0: EHCI version 1.0
usb0 on ehci0
pcib3: <ACPI PCI-PCI bridge> irq 17 at device 28.0 on pci0
pci3: <ACPI PCI bus> on pcib3
pcib4: <ACPI PCI-PCI bridge> irq 17 at device 28.4 on pci0
pci4: <ACPI PCI bus> on pcib4
bge0: <Broadcom NetXtreme Gigabit Ethernet Controller, ASIC rev. 0x5717100> mem 0xfef50000-0xfef5ffff,0xfef40000-0xfef4ffff,0xfef30000-0xfef3ffff irq 16 at device 0.0 on pci4
bge0: APE FW version: NCSI v1.0.88.0
bge0: CHIP ID 0x05717100; ASIC REV 0x5717; CHIP REV 0x57171; PCI-E
miibus0: <MII bus> on bge0
brgphy0: <BCM5717C 1000BASE-T media interface> PHY 1 on miibus0
brgphy0: 10baseT, 10baseT-FDX, 100baseTX, 100baseTX-FDX, 1000baseT, 1000baseT-master, 1000baseT-FDX, 1000baseT-FDX-master, auto, auto-flow
bge0: Ethernet address: 90:2b:34:b8:34:c2
bge1: <Broadcom NetXtreme Gigabit Ethernet Controller, ASIC rev. 0x5717100> mem 0xfef20000-0xfef2ffff,0xfef10000-0xfef1ffff,0xfef00000-0xfef0ffff irq 17 at device 0.1 on pci4
bge1: APE FW version: NCSI v1.0.88.0
bge1: CHIP ID 0x05717100; ASIC REV 0x5717; CHIP REV 0x57171; PCI-E
bge1: firmware handshake timed out, found 0x4b657654
miibus1: <MII bus> on bge1
brgphy1: <BCM5717C 1000BASE-T media interface> PHY 2 on miibus1
brgphy1: 10baseT, 10baseT-FDX, 100baseTX, 100baseTX-FDX, 1000baseT, 1000baseT-master, 1000baseT-FDX, 1000baseT-FDX-master, auto, auto-flow
bge1: Ethernet address: 90:2b:34:b8:34:c3
pcib5: <ACPI PCI-PCI bridge> irq 18 at device 28.6 on pci0
pcib5: failed to allocate initial memory window: 0xfa000000-0xfb8fffff
pci5: <ACPI PCI bus> on pcib5
vgapci0: <VGA-compatible display> mem 0xfa000000-0xfffffff,0xfb000000-0xfb7fffff irq 18 at device 0.0 on pci5
vgapci0: Boot video device
ehci1: <EHCI (generic) USB 2.0 controller> mem 0xfba01000-0xfba013ff irq 23 at device 29.0 on pci0
usb1: EHCI version 1.0
usb1 on ehci1
pcib6: <ACPI PCI-PCI bridge> at device 30.0 on pci0
pci6: <ACPI PCI bus> on pcib6
isab0: <PCI-ISA bridge> at device 31.0 on pci0
isa0: <ISA bus> on isab0
atapci0: <Intel Cougar Point SATA300 controller> port 0xf0d0-0xf0d7,0xf0c0-0xf0c3,0xf0b0-0xf0b7,0xf0a0-0xf0a3,0xf090-0xf09f,0xf080-0xf08f irq 19 at device 31.2 on pci0
ata2: <ATA channel> at channel 0 on atapci0
```

```

ata3: <ATA channel> at channel 1 on atapci0
pci0: <serial bus, SMBus> at device 31.3 (no driver attached)
atapci1: <Intel Cougar Point SATA300 controller> port 0xf070-0xf077,0xf060-0xf063,0xf050-0xf057,0xf040-0xf043,0xf030-0xf03f,0xf020-0xf02f irq 19 at device 31.5 on pci0
ata4: <ATA channel> at channel 0 on atapci1
ata5: <ATA channel> at channel 1 on atapci1
acpi_button0: <Power Button> on acpi0
uart0: <16550 or compatible> port 0x3f8-0x3ff irq 4 flags 0x10 on acpi0
uart1: <16550 or compatible> port 0x2f8-0x2ff irq 3 on acpi0
orm0: <ISA Option ROMs> at iomem 0xc0000-0xc7fff,0xc7800-0xd27ff on isa0
sc0: <System console> at flags 0x100 on isa0
sc0: VGA <16 virtual consoles, flags=0x300>
vga0: <Generic ISA VGA> at port 0x3c0-0x3df iomem 0xa0000-0xbffff on isa0
ppc0: cannot reserve I/O port range
est0: <Enhanced SpeedStep Frequency Control> on cpu0
p4tcc0: <CPU Frequency Thermal Control> on cpu0
est1: <Enhanced SpeedStep Frequency Control> on cpu1
p4tcc1: <CPU Frequency Thermal Control> on cpu1
est2: <Enhanced SpeedStep Frequency Control> on cpu2
p4tcc2: <CPU Frequency Thermal Control> on cpu2
est3: <Enhanced SpeedStep Frequency Control> on cpu3
p4tcc3: <CPU Frequency Thermal Control> on cpu3
mfi0: 6849 (451233722s/0x0020/info) - Shutdown command received from host
mfi0: 6850 (boot + 8s/0x0020/info) - Firmware initialization started (PCI ID 005b/1000/9267/1000)
mfi0: 6851 (boot + 8s/0x0020/info) - Firmware version 3.140.95-1967
mfi0: 6852 (boot + 9s/0x0008/info) - Battery Present
mfi0: 6853 (boot + 9s/0x0008/info) - Battery Present
mfi0: 6854 (boot + 25s/0x0020/info) - Package version 23.1.1-0017
mfi0: 6855 (boot + 25s/0x0020/info) - Board Revision 03B
mfi0: 6856 (boot + 44s/0x0002/info) - Inserted: PD 08(e0xfc/s0)
mfi0: 6857 (boot + 44s/0x0002/info) - Inserted: PD 08(e0xfc/s0) Info: enclPd=fc, scsiType=0, portMap=02, sasAddr=4433221107000000,0000000000000000
mfi0: 6858 (boot + 44s/0x0002/info) - Inserted: PD 09(e0xfc/s2)
mfi0: 6859 (boot + 44s/0x0002/info) - Inserted: PD 09(e0xfc/s2) Info: enclPd=fc, scsiType=0, portMap=00, sasAddr=4433221105000000,0000000000000000
mfi0: 6860 (boot + 44s/0x0002/info) - Inserted: PD 0a(e0xfc/s1)
mfi0: 6861 (boot + 44s/0x0002/info) - Inserted: PD 0a(e0xfc/s1) Info: enclPd=fc, scsiType=0, portMap=01, sasAddr=4433221106000000,0000000000000000
mfi0: 6862 (451233773s/0x0020/info) - Time established as 04/19/14 14:42:53; (48 seconds since power on)
mfi0: 6863 (451233805s/0x0008/info) - Battery temperature is normal
mfi0: 6864 (451233805s/0x0008/WARN) - Battery requires reconditioning; please initiate a LEARN cycle
Timecounters tick every 1.000 msec
random: unblocking device.
usb0: 480Mbps High Speed USB v2.0
usb1: 480Mbps High Speed USB v2.0
ugen0.1: <Intel> at usb0
uhub0: <Intel EHCI root HUB, class 9/0, rev 2.00/1.00, addr 1> on usb0
ugen1.1: <Intel> at usb1
uhub1: <Intel EHCI root HUB, class 9/0, rev 2.00/1.00, addr 1> on usb1
mfi0 on mfi0
mfi0: 952640MB (1951006720 sectors) RAID volume 'array0' is optimal
uhub0: 2 ports with 2 removable, self powered
uhub1: 2 ports with 2 removable, self powered
ugen0.2: <vendor 0x8087> at usb0
uhub2: <vendor 0x8087 product 0x0024, class 9/0, rev 2.00/0.00, addr 2> on usb0
ugen1.2: <vendor 0x8087> at usb1
uhub3: <vendor 0x8087 product 0x0024, class 9/0, rev 2.00/0.00, addr 2> on usb1
uhub2: 6 ports with 6 removable, self powered
uhub3: 6 ports with 6 removable, self powered
cd0 at ata5 bus 0 scbus3 target 0 lun 0
cd0: <TEAC DV-28S-Y N.4A> Removable CD-ROM SCSI-0 device
cd0: Serial Number 00000000 0902310
cd0: 150.000MB/s transfers (SATA 1.x, UDMA5, ATAPI 12bytes, PIO 8192bytes)
cd0: Attempt to query device size failed: NOT READY, Medium not present - tray closed
Netvsc initializing... SMP: AP CPU #1 Launched!
SMP: AP CPU #2 Launched!
SMP: AP CPU #3 Launched!
Timecounter "TSC-low" frequency 1546520640 Hz quality 1000
Root mount waiting for: usb1 usb0
ugen0.3: <Chicony> at usb0
uhub4: <Chicony Generic USB Hub, class 9/0, rev 1.10/1.02, addr 3> on usb0
ugen1.3: <American Megatrends Inc.> at usb1
ukbd0: <Keyboard Interface> on usb1
kbd0 at ukbd0
uhub4: 3 ports with 2 removable, bus powered
Root mount waiting for: usb0
ugen0.4: <Chicony> at usb0
ukbd1: <Chicony PFU-65 USB Keyboard, class 0/0, rev 1.10/1.02, addr 4> on usb0
kbd1 at ukbd1
Trying to mount root from ufs:/dev/mfi0p2 [rw]...
mfi0: 6865 (451233831s/0x0020/info) - Patrol Read resumed
ums0: <Mouse Interface> on usb1
ums0: 3 buttons and [Z] coordinates ID=0

```

# カーネルデバイスツリー

```
nexus0
apic0
ram0
  I/O memory addresses:
    0x0-0x99bfff
    0x100000-0xdd735fff
    0xdd7a1000-0xdd7a1fff
    0xdd863000-0xdf7d3fff
    0xdf7df000-0xdf7fffff
    0x100000000-0x21ffffff
acpi0
  Interrupt request lines:
    0x9
  I/O ports:
    0x10-0x1f
    0x22-0x3f
    0x44-0x5f
    0x62-0x63
    0x65-0x6f
    0x72-0x7f
    0x80
    0x84-0x86
    0x88
    0x8c-0x8e
    0x90-0x9f
    0xa2-0xbf
    0xe0-0xef
    0x400-0x453
    0x454-0x457
    0x458-0x47f
    0x4d0-0x4d1
    0x500-0x57f
    0xca4-0xca5
    0x1180-0x119f
  I/O memory addresses:
    0xe000000-0xfffffff
    0xfb800000-0xfb87ffff
    0xfb894000-0xfb894fff
    0xfec00000-0xfecfffff
    0xfed08000-0xfed08fff
    0xfed10000-0xfed19fff
    0xfed1c000-0xfed1ffff
    0xfed20000-0xfed3ffff
    0xfed40000-0xfed44fff
    0xfed90000-0xfed93fff
    0xfef00000-0xfef0ffff
    0xff000000-0xffffffff
cpu0
  ACPI I/O ports:
    0x415
  acpi_perf0
  est0
  p4tcc0
  cpufreq0
cpu1
  ACPI I/O ports:
    0x415
  acpi_perf1
  est1
  p4tcc1
  cpufreq1
cpu2
  ACPI I/O ports:
    0x415
  acpi_perf2
  est2
  p4tcc2
  cpufreq2
cpu3
  ACPI I/O ports:
    0x415
  acpi_perf3
  est3
  p4tcc3
  cpufreq3
pcib0
  I/O ports:
    0xcf8-0xcff
pci0
  hostb0
  pcib1
  pci1
  pcib2
    I/O ports:
      0xe000-0xefff
    I/O memory addresses:
      0xfb900000-0xfb9fffff
pci2
  mfi0
    Interrupt request lines:
      0x108
    pcib2 I/O port window:
      0xe000-0xe0ff
    pcib2 memory window:
      0xfb900000-0xfb93ffff
      0xfb960000-0xfb963fff
  mfid0
ehci0
  Interrupt request lines:
    0x10
  I/O memory addresses:
```

```

    0xfba02000-0xfba023ff
usb0
uhub0
uhub2
uhub4
ukbd1
umass0
pcib3
pci3
pcib4
I/O memory addresses:
    0xfef00000-0xfeffffff
pci4
bge0
Interrupt request lines:
    0x109
pci4 prefetch window:
    0xfef30000-0xfef3ffff
    0xfef40000-0xfef4ffff
    0xfef50000-0xfef5ffff
miibus0
brgphy0
bge1
Interrupt request lines:
    0x10a
pci4 prefetch window:
    0xfef00000-0xfef0ffff
    0xfef10000-0xfef1ffff
    0xfef20000-0xfef2ffff
miibus1
brgphy1
pcib5
I/O memory addresses:
    0xfa000000-0xfb7ffffff
pci5
vgapci0
pci5 memory window:
    0xfa000000-0xfaffffff
    0xfb000000-0xfb7ffffff
ehci1
Interrupt request lines:
    0x17
I/O memory addresses:
    0xfba01000-0xfba013ff
usb1
uhub1
uhub3
ukbd0
ums0
pcib6
pci6
isab0
isa0
sc0
vga0
I/O ports:
    0x3c0-0x3df
I/O memory addresses:
    0xa0000-0xbffff
orm0
I/O memory addresses:
    0xc0000-0xc7fff
    0xcf800-0xd27ff
atapci0
Interrupt request lines:
    0x13
I/O ports:
    0xf080-0xf08f
    0xf090-0xf09f
    0xf0a0-0xf0af
    0xf0b0-0xf0bf
    0xf0c0-0xf0cf
    0xf0d0-0xf0df
ata2
ata3
atapci1
Interrupt request lines:
    0x13
I/O ports:
    0xf020-0xf02f
    0xf030-0xf03f
    0xf040-0xf043
    0xf050-0xf057
    0xf060-0xf063
    0xf070-0xf077
ata4
ata5
acpi_sysresource0
acpi_sysresource1
uart0
Interrupt request lines:
    0x4
I/O ports:
    0x3f8-0x3ff
uart1
Interrupt request lines:
    0x3
I/O ports:
    0x2f8-0x2ff
atdma0
DMA request lines:
    4
I/O ports:
    0x0-0xf
    0x81-0x83
    0x87
    0x89-0x8b

```

```
    0x8f
    0xc0-0xdf
attimer0
  Interrupt request lines:
    0x0
  I/O ports:
    0x40-0x43
atrtc0
  Interrupt request lines:
    0x8
  I/O ports:
    0x70-0x71
acpi_sysresource2
fpupnp0
  I/O ports:
    0xf0-0xff
acpi_sysresource3
acpi_sysresource4
acpi_sysresource5
acpi_sysresource6
hpet0
  Interrupt request lines:
    0x100
    0x101
    0x102
    0x103
    0x104
    0x105
    0x106
    0x107
  I/O memory addresses:
    0xfed00000-0xfed003ff
acpi_button0
pci_link0
pci_link1
pci_link2
pci_link3
pci_link4
pci_link5
pci_link6
pci_link7
acpi_sysresource7
acpi_sysresource8
acpi_timer0
  ACPI I/O ports:
    0x408-0x40b
```



# PCIバスデータ詳細一覧

```
hostb0@pci:0:0:0: class=0x060000 card=0x80071bcf chip=0x01588086 rev=0x09 hdr=0x00
vendor      = 'Intel Corporation'
device      = 'Xeon E3-1200 v2/Ivy Bridge DRAM Controller'
class       = bridge
subclass    = HOST-PCI
cap 09[e0] = vendor (length 12) Intel cap 0 version 1
pcib1@pci:0:0:1:0: class=0x060400 card=0x80071bcf chip=0x01518086 rev=0x09 hdr=0x01
vendor      = 'Intel Corporation'
device      = 'Xeon E3-1200 v2/3rd Gen Core processor PCI Express Root Port'
class       = bridge
subclass    = PCI-PCI
cap 0d[88] = PCI Bridge card=0x80071bcf
cap 01[80] = powerspec 3 supports D0 D3 current D0
cap 05[90] = MSI supports 1 message
cap 10[a0] = PCI-Express 2 root port slot max data 128(256) link x0(x16)
            speed 0.0(8.0) ASPM disabled(L0s/L1)
ecap 0002[100] = VC 1 max VC0
ecap 0005[140] = Root Complex Link Declaration 1
ecap 0019[d94] = PCIe Sec 1 lane errors 0
pcib2@pci:0:0:6:0: class=0x060400 card=0x80071bcf chip=0x015d8086 rev=0x09 hdr=0x01
vendor      = 'Intel Corporation'
device      = 'Xeon E3-1200 v2/3rd Gen Core processor PCI Express Root Port'
class       = bridge
subclass    = PCI-PCI
cap 0d[88] = PCI Bridge card=0x80071bcf
cap 01[80] = powerspec 3 supports D0 D3 current D0
cap 05[90] = MSI supports 1 message
cap 10[a0] = PCI-Express 2 root port slot max data 128(128) link x4(x4)
            speed 5.0(5.0) ASPM disabled(L0s/L1)
ecap 0002[100] = VC 1 max VC0
ecap 0005[140] = Root Complex Link Declaration 1
none0@pci:0:0:22:0: class=0x078000 card=0x80071bcf chip=0x1c3a8086 rev=0x04 hdr=0x00
vendor      = 'Intel Corporation'
device      = '6 Series/C200 Series Chipset Family MEI Controller'
class       = simple comms
cap 01[50] = powerspec 3 supports D0 D3 current D0
cap 05[8c] = MSI supports 1 message, 64 bit
none1@pci:0:0:22:1: class=0x078000 card=0x80071bcf chip=0x1c3b8086 rev=0x04 hdr=0x00
vendor      = 'Intel Corporation'
device      = '6 Series/C200 Series Chipset Family MEI Controller'
class       = simple comms
cap 01[50] = powerspec 3 supports D0 D3 current D0
cap 05[8c] = MSI supports 1 message, 64 bit
ehci0@pci:0:0:26:0: class=0x0c0320 card=0x80071bcf chip=0x1c2d8086 rev=0x04 hdr=0x00
vendor      = 'Intel Corporation'
device      = '6 Series/C200 Series Chipset Family USB Enhanced Host Controller'
class       = serial bus
subclass    = USB
cap 01[50] = powerspec 2 supports D0 D3 current D0
cap 0a[58] = EHCI Debug Port at offset 0xa0 in map 0x14
cap 13[98] = PCI Advanced Features: FLR TP
pcib3@pci:0:0:28:0: class=0x060400 card=0x80071bcf chip=0x1c108086 rev=0xb4 hdr=0x01
vendor      = 'Intel Corporation'
device      = '6 Series/C200 Series Chipset Family PCI Express Root Port 1'
class       = bridge
subclass    = PCI-PCI
cap 10[40] = PCI-Express 2 root port slot max data 128(128) link x0(x4)
            speed 0.0(5.0) ASPM disabled(L0s/L1)
cap 05[80] = MSI supports 1 message
cap 0d[90] = PCI Bridge card=0x80071bcf
cap 01[a0] = powerspec 2 supports D0 D3 current D0
pcib4@pci:0:0:28:4: class=0x060400 card=0x80071bcf chip=0x1c188086 rev=0xb4 hdr=0x01
vendor      = 'Intel Corporation'
device      = '6 Series/C200 Series Chipset Family PCI Express Root Port 5'
class       = bridge
subclass    = PCI-PCI
cap 10[40] = PCI-Express 2 root port slot max data 128(128) link x2(x2)
            speed 2.5(5.0) ASPM disabled(L0s/L1)
cap 05[80] = MSI supports 1 message
cap 0d[90] = PCI Bridge card=0x80071bcf
cap 01[a0] = powerspec 2 supports D0 D3 current D0
pcib5@pci:0:0:28:6: class=0x060400 card=0x80071bcf chip=0x1c1c8086 rev=0xb4 hdr=0x01
vendor      = 'Intel Corporation'
device      = '6 Series/C200 Series Chipset Family PCI Express Root Port 7'
class       = bridge
subclass    = PCI-PCI
cap 10[40] = PCI-Express 2 root port slot max data 128(128) link x1(x1)
            speed 2.5(5.0) ASPM disabled(L0s/L1)
cap 05[80] = MSI supports 1 message
cap 0d[90] = PCI Bridge card=0x80071bcf
cap 01[a0] = powerspec 2 supports D0 D3 current D0
ehci1@pci:0:0:29:0: class=0x0c0320 card=0x80071bcf chip=0x1c268086 rev=0x04 hdr=0x00
vendor      = 'Intel Corporation'
device      = '6 Series/C200 Series Chipset Family USB Enhanced Host Controller'
class       = serial bus
subclass    = USB
cap 01[50] = powerspec 2 supports D0 D3 current D0
cap 0a[58] = EHCI Debug Port at offset 0xa0 in map 0x14
cap 13[98] = PCI Advanced Features: FLR TP
pcib6@pci:0:0:30:0: class=0x060401 card=0x80071bcf chip=0x244e8086 rev=0xa4 hdr=0x01
vendor      = 'Intel Corporation'
device      = '82801 PCI Bridge'
class       = bridge
subclass    = PCI-PCI
cap 0d[50] = PCI Bridge card=0x80071bcf
isab0@pci:0:0:31:0: class=0x060100 card=0x80071bcf chip=0x1c548086 rev=0x04 hdr=0x00
vendor      = 'Intel Corporation'
device      = 'C204 Chipset Family LPC Controller'
class       = bridge
subclass    = PCI-ISA
cap 09[e0] = vendor (length 12) Intel cap 1 version 0
```

```

features: AMT, 4 PCI-e x1 slots
atapci0@pci:0:31:2: class=0x01018f card=0x80071bcf chip=0x1c008086 rev=0x04 hdr=0x00
vendor   = 'Intel Corporation'
device   = '6 Series/C200 Series Chipset Family 4 port SATA IDE Controller'
class    = mass storage
subclass = ATA
cap 01[70] = powerspec 3 supports D0 D3 current D0
cap 13[b0] = PCI Advanced Features: FLR TP
none2@pci:0:31:3: class=0x0c0500 card=0x80071bcf chip=0x1c228086 rev=0x04 hdr=0x00
vendor   = 'Intel Corporation'
device   = '6 Series/C200 Series Chipset Family SMBus Controller'
class    = serial bus
subclass = SMBus
atapci1@pci:0:31:5: class=0x010185 card=0x80071bcf chip=0x1c088086 rev=0x04 hdr=0x00
vendor   = 'Intel Corporation'
device   = '6 Series/C200 Series Chipset Family 2 port SATA IDE Controller'
class    = mass storage
subclass = ATA
cap 01[70] = powerspec 3 supports D0 D3 current D0
cap 13[b0] = PCI Advanced Features: FLR TP
mfi0@pci:2:0:0: class=0x010400 card=0x92671000 chip=0x005b1000 rev=0x01 hdr=0x00
vendor   = 'LSI Logic / Symbios Logic'
device   = 'MegaRAID SAS 2208 [Thunderbolt]'
class    = mass storage
subclass = RAID
cap 01[50] = powerspec 3 supports D0 D1 D2 D3 current D0
cap 10[68] = PCI-Express 2 endpoint max data 128(4096) FLR link x4(x8)
           speed 5.0(5.0) ASPM disabled(L0s)
cap 03[d0] = VPD
cap 05[a8] = MSI supports 1 message, 64 bit enabled with 1 message
cap 11[c0] = MSI-X supports 16 messages
           Table in map 0x14[0x2000], PBA in map 0x14[0x3000]
ecap 0001[100] = AER 2 0 fatal 0 non-fatal 1 corrected
ecap 0019[1e0] = PCIe Sec 1 lane errors 0
ecap 0004[1c0] = Power Budgeting 1
ecap 0016[190] = DPA 1
ecap 000e[148] = ARI 1
bge0@pci:4:0:0: class=0x020000 card=0x80071bcf chip=0x165614e4 rev=0x10 hdr=0x00
vendor   = 'Broadcom Corporation'
device   = 'NetXtreme BCM5718 Gigabit Ethernet PCIe'
class    = network
subclass = ethernet
cap 01[48] = powerspec 3 supports D0 D3 current D0
cap 03[50] = VPD
cap 05[58] = MSI supports 8 messages, 64 bit enabled with 1 message
cap 11[a0] = MSI-X supports 17 messages
           Table in map 0x20[0x0], PBA in map 0x20[0x1000]
cap 10[ac] = PCI-Express 2 endpoint max data 128(256) FLR link x2(x2)
           speed 2.5(2.5) ASPM disabled(L1)
ecap 0001[100] = AER 1 0 fatal 0 non-fatal 1 corrected
ecap 0003[13c] = Serial 1 0000902b34b834c2
ecap 0004[150] = Power Budgeting 1
ecap 0002[160] = VC 1 max VC0
bge1@pci:4:0:1: class=0x020000 card=0x80071bcf chip=0x165614e4 rev=0x10 hdr=0x00
vendor   = 'Broadcom Corporation'
device   = 'NetXtreme BCM5718 Gigabit Ethernet PCIe'
class    = network
subclass = ethernet
cap 01[48] = powerspec 3 supports D0 D3 current D0
cap 03[50] = VPD
cap 05[58] = MSI supports 8 messages, 64 bit enabled with 1 message
cap 11[a0] = MSI-X supports 17 messages
           Table in map 0x20[0x0], PBA in map 0x20[0x1000]
cap 10[ac] = PCI-Express 2 endpoint max data 128(256) FLR link x2(x2)
           speed 2.5(2.5) ASPM disabled(L1)
ecap 0001[100] = AER 1 0 fatal 0 non-fatal 1 corrected
ecap 0003[13c] = Serial 1 0000902b34b834c3
ecap 0004[150] = Power Budgeting 1
ecap 0002[160] = VC 1 max VC0
vgapci0@pci:5:0:0: class=0x030000 card=0x80071bcf chip=0x0522102b rev=0x02 hdr=0x00
vendor   = 'Matrox Electronics Systems Ltd.'
device   = 'MGA G200e [Pilot] ServerEngines (SEP1)'
class    = display
subclass = VGA
cap 01[dc] = powerspec 2 supports D0 D3 current D0
cap 10[e4] = PCI-Express 1 legacy endpoint max data 128(256) link x1(x1)
           speed 2.5(2.5) ASPM disabled(L0s)
cap 05[54] = MSI supports 1 message

```

# ACPI電源管理データ詳細一覧

```
RSD PTR: OEM=AMI, ACPI_Rev=2.0x (2)
XSDT=0xdd77e070, length=36, cksum=56
XSDT: Length=92, Revision=1, Checksum=42,
OEMID=AMI, OEM Table ID=05F6, OEM Revision=0x1072009,
Creator ID=AMI, Creator Revision=0x10013
Entries={ 0xdd7849d0, 0xdd784ac8, 0xdd784b48, 0xdd784c50, 0xdd784c90, 0xdd784cc8, 0xdd784d78 }
FACP: Length=244, Revision=4, Checksum=74,
OEMID=AMI, OEM Table ID=05F6, OEM Revision=0x1072009,
Creator ID=AMI, Creator Revision=0x10013
FACS=0xdd7fcf80, DSDT=0xdd77e158
INT_MODEL=APIC
Preferred_PM_Profile=SOHO Server (5)
SCI_INT=9
SMI_CMD=0xb2, ACPI_ENABLE=0xa0, ACPI_DISABLE=0xa1, S4BIOS_REQ=0x0
PSTATE_CNT=0x0
PM1a_EVT_BLK=0x400-0x403
PM1a_CNT_BLK=0x404-0x405
PM2_CNT_BLK=0x450-0x450
PM_TMR_BLK=0x408-0x40b
GPE0_BLK=0x420-0x42f
P_LVL2_LAT=101 us, P_LVL3_LAT=1001 us
FLUSH_SIZE=1024, FLUSH_STRIDE=16
DUTY_OFFSET=1, DUTY_WIDTH=3
DAY_ALRM=13, MON_ALRM=0, CENTURY=50
IAPC_BOOT_ARCH={LEGACY_DEVICES}
Flags={WBINVD, C1_SUPPORTED, SLEEP_BUTTON, S4_RTC_WAKE, RESET_REGISTER, PLATFORM_CLOCK, S4_RTC_VALID, REMOTE_POWER_ON}
RESET_REG=0x50d:0[8] (IO), RESET_VALUE=0xfe
FACS: Length=64, HwSig=0x00000000, FirmWake_Vec=0x00000000
Global_Lock=
Flags=
Version=2
DSDT: Length=26738, Revision=2, Checksum=108,
OEMID=AMI, OEM Table ID=05F6, OEM Revision=0x10,
Creator ID=INTL, Creator Revision=0x20100121
APIC: Length=124, Revision=3, Checksum=56,
OEMID=AMI, OEM Table ID=05F6, OEM Revision=0x1072009,
Creator ID=AMI, Creator Revision=0x10013
Local APIC ADDR=0xfe000000
Flags={PC-AT}
Type=Local APIC
ACPI CPU=1
Flags={ENABLED}
APIC ID=0
Type=Local APIC
ACPI CPU=2
Flags={ENABLED}
APIC ID=2
Type=Local APIC
ACPI CPU=3
Flags={ENABLED}
APIC ID=4
Type=Local APIC
ACPI CPU=4
Flags={ENABLED}
APIC ID=6
Type=IO APIC
APIC ID=0
INT BASE=0
ADDR=0x00000000fec00000
Type=INT Override
BUS=0
IRQ=0
INTR=2
Flags={Polarity=active-hi, Trigger=edge}
Type=INT Override
BUS=0
IRQ=9
INTR=9
Flags={Polarity=active-hi, Trigger=level}
Type=INT Override
BUS=0
IRQ=11
INTR=11
Flags={Polarity=active-hi, Trigger=edge}
Type=Local APIC NMI
ACPI CPU=ALL
LINT Pin=1
Flags={Polarity=active-hi, Trigger=edge}
SSDT: Length=258, Revision=1, Checksum=209,
OEMID=AMI, OEM Table ID=05F6, OEM Revision=0x1,
Creator ID=MSFT, Creator Revision=0x3000001
MCFG: Length=60, Revision=1, Checksum=45,
OEMID=AMI, OEM Table ID=05F6, OEM Revision=0x1072009,
Creator ID=MSFT, Creator Revision=0x97
Base Address=0x00000000e0000000
Segment Group=0x0000
Start Bus=0
End Bus=255
HPET: Length=56, Revision=1, Checksum=227,
OEMID=AMI, OEM Table ID=05F6, OEM Revision=0x1072009,
Creator ID=AMI., Creator Revision=0x4
HPET Number=0
ADDR=0xfed00000:0[64] (Memory) HW Rev=0x1
Comparators=7
Counter Size=1
Legacy IRQ routing capable={TRUE}
PCI Vendor ID=0x8086
Minimal Tick=14318
DMAR: Length=176, Revision=1, Checksum=213,
OEMID=AMI, OEM Table ID=05F6, OEM Revision=0x1,
Creator ID=INTL, Creator Revision=0x1
```

```

Host Address Width=36
Flags={INTR_REMAP}
Type=DRHD
Length=88
Flags={INCLUDE_ALL}
Segment=0
Address=0xfed91000
  Type=IOAPIC
  Length=8
  EnumerationId=0
  StartBusNumber=240
  Path={31:0}
  Type=HPET
  Length=8
  EnumerationId=0
  StartBusNumber=240
  Path={15:0}
  Type=HPET
  Length=8
  EnumerationId=0
  StartBusNumber=240
  Path={15:1}
  Type=HPET
  Length=8
  EnumerationId=0
  StartBusNumber=240
  Path={15:2}
  Type=HPET
  Length=8
  EnumerationId=0
  StartBusNumber=240
  Path={15:3}
  Type=HPET
  Length=8
  EnumerationId=0
  StartBusNumber=240
  Path={15:4}
  Type=HPET
  Length=8
  EnumerationId=0
  StartBusNumber=240
  Path={15:5}
  Type=HPET
  Length=8
  EnumerationId=0
  StartBusNumber=240
  Path={15:6}
  Type=HPET
  Length=8
  EnumerationId=0
  StartBusNumber=240
  Path={15:7}
Type=RMRR
Length=40
Segment=0
BaseAddress=0xdd7c4000
LimitAddress=0xdd7d2fff
  Type=PCI Endpoint Device
  Length=8
  EnumerationId=0
  StartBusNumber=0
  Path={29:0}
  Type=PCI Endpoint Device
  Length=8
  EnumerationId=0
  StartBusNumber=0
  Path={26:0}
BERT: Length=48, Revision=1, Checksum=57,
OEMID=AMI, OEM Table ID=05F6, OEM Revision=0x1072009,
Creator ID=AMI, Creator Revision=0x10013

```

# ネットワークインターフェースデータ詳細一覧

```
bge0: flags=8843<UP,BROADCAST,RUNNING,SIMPLEX,MULTICAST> metric 0 mtu 1500
options=c019b<RXCSUM, TXCSUM, VLAN_MTU, VLAN_HWTAGGING, VLAN_HWCSUM, TS04, VLAN_HWTSO, LINKSTATE>
ether 90:2b:34:b8:34:c2
inet 192.168.1.26 netmask 0xfffff00 broadcast 192.168.1.255
nd6 options=29<PERFORMNUD,IFDISABLED,AUTO_LINKLOCAL>
media: Ethernet autoselect (1000baseT <full-duplex,master>)
status: active
bge1: flags=8802<BROADCAST,SIMPLEX,MULTICAST> metric 0 mtu 1500
options=c019b<RXCSUM, TXCSUM, VLAN_MTU, VLAN_HWTAGGING, VLAN_HWCSUM, TS04, VLAN_HWTSO, LINKSTATE>
ether 90:2b:34:b8:34:c3
nd6 options=29<PERFORMNUD,IFDISABLED,AUTO_LINKLOCAL>
media: Ethernet autoselect
lo0: flags=8049<UP,LOOPBACK,RUNNING,MULTICAST> metric 0 mtu 16384
options=600003<RXCSUM, TXCSUM, RXCSUM_IPV6, TXCSUM_IPV6>
inet6 ::1 prefixlen 128
inet6 fe80::1%lo0 prefixlen 64 scopeid 0x3
inet 127.0.0.1 netmask 0xffff0000
nd6 options=21<PERFORMNUD,AUTO_LINKLOCAL>
```

# デバイス認識詳細一覧

2	1 dr-xr-xr-x	9 root	wheel	512 Apr 19 23:43 /dev
91	0 lrwxr-xr-x	1 root	wheel	12 Apr 19 14:43 /dev/log -> /var/run/log
112	0 lrwxr-xr-x	1 root	wheel	12 Apr 19 23:43 /dev/dmptdev -> /dev/mfid0p3
3	0 cr--r--r--	1 root	wheel	0x3 Apr 19 14:43 /dev/sndstat
4	0 crw-r-----	1 root	operator	0x4 Apr 19 14:43 /dev/geom.ctl
5	0 crw-----	1 root	wheel	0x5 Apr 19 14:43 /dev/devctl
6	0 crw-----	1 root	wheel	0x6 Apr 19 14:59 /dev/console
7	0 crw-----	1 root	wheel	0x7 Apr 19 14:43 /dev/kbdmux0
8	0 lrwxr-xr-x	1 root	wheel	7 Apr 19 14:43 /dev/kbd1 -> kbdmux0
9	0 crw-rw-rw-	1 root	wheel	0x9 Apr 19 14:43 /dev/tty
10	0 crw-r-----	1 root	kmem	0xa Apr 19 14:43 /dev/mem
11	0 crw-r-----	1 root	kmem	0xb Apr 19 14:43 /dev/kmem
12	0 crw-----	1 root	wheel	0xc Apr 19 14:43 /dev/fido
13	0 crw-----	1 root	wheel	0xd Apr 19 14:43 /dev/bpf
14	0 lrwxr-xr-x	1 root	wheel	3 Apr 19 14:43 /dev/bpf0 -> bpf
15	0 crw-rw-rw-	1 root	wheel	0xf Apr 19 14:55 /dev/null
16	0 crw-rw-rw-	1 root	wheel	0x10 Apr 19 14:43 /dev/zero
17	0 crw-r--r--	1 root	wheel	0x11 Apr 19 14:43 /dev/pci
18	0 crw-----	1 root	kmem	0x12 Apr 19 14:43 /dev/nfslock
19	0 crw-----	1 root	kmem	0x13 Apr 19 14:43 /dev/audit
20	0 crw-rw-rw-	1 root	wheel	0x14 Apr 19 23:43 /dev/random
21	0 lrwxr-xr-x	1 root	wheel	6 Apr 19 14:43 /dev/urandom -> random
108	1 dr-xr-xr-x	2 root	wheel	512 Apr 19 14:43 /dev/fd
22	0 crw-rw-rw-	1 root	wheel	0x16 Apr 19 14:43 /dev/fd/0
24	0 crw-rw-rw-	1 root	wheel	0x18 Apr 19 14:43 /dev/fd/1
26	0 crw-rw-rw-	1 root	wheel	0x1a Apr 19 14:43 /dev/fd/2
23	0 lrwxr-xr-x	1 root	wheel	4 Apr 19 14:43 /dev/stdin -> fd/0
25	0 lrwxr-xr-x	1 root	wheel	4 Apr 19 14:43 /dev/stdout -> fd/1
27	0 lrwxr-xr-x	1 root	wheel	4 Apr 19 14:43 /dev/stderr -> fd/2
28	0 crw-----	1 root	wheel	0x1c Apr 19 14:43 /dev/io
29	0 crw-rw-rw-	1 root	wheel	0x1d Apr 19 14:43 /dev/midiostat
30	0 crw-----	1 root	wheel	0x1e Apr 19 14:43 /dev/synmouse
31	0 crw-----	1 root	wheel	0x1f Apr 19 14:43 /dev/klog
32	0 crw-r--r--	1 root	wheel	0x20 Apr 19 14:43 /dev/acpi
33	0 crw-rw-rw-	1 root	operator	0x21 Apr 19 14:43 /dev/apmctl
34	0 crw-rw-rw-	1 root	operator	0x22 Apr 19 14:43 /dev/apm
35	0 crw-r-----	1 root	operator	0x23 Apr 19 14:43 /dev/mfi0
36	0 lrwxr-xr-x	1 root	wheel	4 Apr 19 14:43 /dev/megaraid_sas_ioctl_node -> mfi0
37	0 crw-----	1 root	wheel	0x25 Apr 19 14:43 /dev/ttyu0
38	0 crw-----	1 root	wheel	0x26 Apr 19 14:43 /dev/ttyu0.init
39	0 crw-----	1 root	wheel	0x27 Apr 19 14:43 /dev/ttyu0.lock
40	0 crw-rw-rw-	1 uucp	dialer	0x28 Apr 19 14:43 /dev/cua0
41	0 crw-rw-rw-	1 uucp	dialer	0x29 Apr 19 14:43 /dev/cua0.init
42	0 crw-rw-rw-	1 uucp	dialer	0x2a Apr 19 14:43 /dev/cua0.lock
43	0 crw-----	1 root	wheel	0x2b Apr 19 14:43 /dev/ttyu1
44	0 crw-----	1 root	wheel	0x2c Apr 19 14:43 /dev/ttyu1.init
45	0 crw-----	1 root	wheel	0x2d Apr 19 14:43 /dev/ttyu1.lock
46	0 crw-rw-rw-	1 uucp	dialer	0x2e Apr 19 14:43 /dev/cua1
47	0 crw-rw-rw-	1 uucp	dialer	0x2f Apr 19 14:43 /dev/cua1.init
48	0 crw-rw-rw-	1 uucp	dialer	0x30 Apr 19 14:43 /dev/cua1.lock
49	0 crw-----	1 root	tty	0x31 Apr 19 14:59 /dev/ttyv0
50	0 crw-----	1 root	wheel	0x32 Apr 19 14:44 /dev/ttyv1
51	0 crw-----	1 root	wheel	0x33 Apr 19 14:44 /dev/ttyv2
52	0 crw-----	1 root	wheel	0x34 Apr 19 14:44 /dev/ttyv3
53	0 crw-----	1 root	wheel	0x35 Apr 19 14:44 /dev/ttyv4
54	0 crw-----	1 root	wheel	0x36 Apr 19 14:44 /dev/ttyv5
55	0 crw-----	1 root	wheel	0x37 Apr 19 14:44 /dev/ttyv6
56	0 crw-----	1 root	wheel	0x38 Apr 19 14:44 /dev/ttyv7
57	0 crw-----	1 root	wheel	0x39 Apr 19 14:43 /dev/ttyv8
58	0 crw-----	1 root	wheel	0x3a Apr 19 14:43 /dev/ttyv9
59	0 crw-----	1 root	wheel	0x3b Apr 19 14:43 /dev/ttyva
60	0 crw-----	1 root	wheel	0x3c Apr 19 14:43 /dev/ttyvb
61	0 crw-----	1 root	wheel	0x3d Apr 19 14:43 /dev/ttyvc
62	0 crw-----	1 root	wheel	0x3e Apr 19 14:43 /dev/ttyvd
63	0 crw-----	1 root	wheel	0x3f Apr 19 14:43 /dev/ttyve
64	0 crw-----	1 root	wheel	0x40 Apr 19 14:43 /dev/ttyvf
65	0 crw-----	1 root	wheel	0x41 Apr 19 14:43 /dev/consolectl
66	0 crw-----	1 root	wheel	0x42 Apr 19 14:43 /dev/ufssuspend
68	0 crw-r--r--	1 root	operator	0x44 Apr 19 14:43 /dev/usbctl
69	0 crw-----	1 root	operator	0x45 Apr 19 14:43 /dev/xpt0
70	0 crw-----	1 root	wheel	0x46 Apr 19 14:43 /dev/mdctl
109	1 dr-xr-xr-x	2 root	wheel	512 Apr 19 14:43 /dev/usb
71	0 crw-----	1 root	operator	0x47 Apr 19 14:43 /dev/usb/0.1.0
73	0 crw-----	1 root	operator	0x49 Apr 19 14:43 /dev/usb/1.1.0
75	0 crw-----	1 root	operator	0x4b Apr 19 14:43 /dev/usb/0.1.1
76	0 crw-----	1 root	operator	0x4c Apr 19 14:43 /dev/usb/1.1.1
78	0 crw-----	1 root	operator	0x4e Apr 19 14:43 /dev/usb/0.2.0
80	0 crw-----	1 root	operator	0x50 Apr 19 14:43 /dev/usb/1.2.0
82	0 crw-----	1 root	operator	0x52 Apr 19 14:43 /dev/usb/0.2.1
83	0 crw-----	1 root	operator	0x53 Apr 19 14:43 /dev/usb/1.2.1
94	0 crw-----	1 root	operator	0x5e Apr 19 14:43 /dev/usb/1.3.0
99	0 crw-----	1 root	operator	0x63 Apr 19 14:43 /dev/usb/1.3.1
100	0 crw-----	1 root	operator	0x64 Apr 19 14:43 /dev/usb/1.3.2
92	0 crw-----	1 root	operator	0x5c Apr 19 14:59 /dev/usb/0.3.0
97	0 crw-----	1 root	operator	0x61 Apr 19 14:59 /dev/usb/0.3.1
98	0 crw-----	1 root	operator	0x62 Apr 19 14:59 /dev/usb/0.4.0
104	0 crw-----	1 root	operator	0x68 Apr 19 14:59 /dev/usb/0.4.1
107	0 crw-----	1 root	operator	0x6b Apr 19 14:59 /dev/usb/0.5.0
113	0 crw-----	1 root	operator	0x71 Apr 19 14:59 /dev/usb/0.5.1
114	0 crw-----	1 root	operator	0x72 Apr 19 14:59 /dev/usb/0.5.2
72	0 lrwxr-xr-x	1 root	wheel	9 Apr 19 14:43 /dev/ugen0.1 -> usb/0.1.0
74	0 lrwxr-xr-x	1 root	wheel	9 Apr 19 14:43 /dev/ugen1.1 -> usb/1.1.0
77	0 cr-----	1 root	wheel	0x4d Apr 19 14:43 /dev/devstat
79	0 lrwxr-xr-x	1 root	wheel	9 Apr 19 14:43 /dev/ugen0.2 -> usb/0.2.0
81	0 lrwxr-xr-x	1 root	wheel	9 Apr 19 14:43 /dev/ugen1.2 -> usb/1.2.0
84	0 crw-r-----	1 root	operator	0x54 Apr 19 14:43 /dev/mfid0
85	0 crw-r-----	1 root	operator	0x55 Apr 19 14:43 /dev/mfid0p1
86	0 crw-r-----	1 root	operator	0x56 Apr 19 14:43 /dev/pass0
87	0 crw-r-----	1 root	operator	0x57 Apr 19 23:43 /dev/mfid0p2
88	0 crw-r-----	1 root	operator	0x58 Apr 19 23:43 /dev/mfid0p3
110	1 dr-xr-xr-x	2 root	wheel	512 Apr 19 14:43 /dev/gptid

89	0 crw-r-----	1 root	operator	0x59 Apr 19 14:43 /dev/gptid/2cef9bbb-c7cd-11e3-
add0-902b34b834c2				
93	0 crw-r-----	1 root	operator	0x5d Apr 19 14:43 /dev/cd0
95	0 lrwxr-xr-x	1 root	wheel	9 Apr 19 14:43 /dev/ugen1.3 -> usb/1.3.0
101	0 crw-----	1 root	wheel	0x65 Apr 19 14:43 /dev/ukbd0
102	0 lrwxr-xr-x	1 root	wheel	5 Apr 19 14:43 /dev/kbd0 -> ukbd0
90	0 crw-r--r--	1 root	operator	0x5a Apr 19 14:43 /dev/ums0
96	0 lrwxr-xr-x	1 root	wheel	9 Apr 19 14:59 /dev/ugen0.3 -> usb/0.3.0
103	0 lrwxr-xr-x	1 root	wheel	9 Apr 19 14:59 /dev/ugen0.4 -> usb/0.4.0
105	0 crw-----	1 root	wheel	0x69 Apr 19 14:59 /dev/ukbd1
106	0 lrwxr-xr-x	1 root	wheel	5 Apr 19 14:59 /dev/kbd2 -> ukbd1
111	0 lrwxr-xr-x	1 root	wheel	9 Apr 19 14:59 /dev/ugen0.5 -> usb/0.5.0
115	0 crw-----	1 root	operator	0x73 Apr 19 14:59 /dev/pass1
116	0 crw-r-----	1 root	operator	0x74 Apr 19 14:59 /dev/da0

## 更新履歷



## 更新履歴

- 2014年04月19日 FreeBSD動作検証レポート2014年4月19日版作成

# FreeBSD動作検証レポート

## GT110e / 10.0-STABLE

### 対象ハードウェア

maker:NEC, product:Express5800/GT110e [N8100-1883Y],  
serial:2900380, version:FR1.0

### 対象OSバージョン

FreeBSD 10.0-STABLE #0 r262915: Sat Mar 8 03:13:32 UTC 2014

2014年4月19日版

BSDコンサルティング株式会社

本文書の無断での引用・転載を禁止する

Contact us: [info@bsdconsulting.co.jp](mailto:info@bsdconsulting.co.jp)

Copyright (c) 2014 BSD Consulting, Inc. All Rights Reserved.